

# CLIQ® Local Manager

Powerful local software for  
managing CLIQ locking systems



**ABLOY**

# What is CLIQ Local Manager?

CLIQ Local Manager is an intuitive software package that helps you run a CLIQ key-based access management system efficiently from any standard PC.

Security managers and system administrators can easily perform all the tasks required for their building — programming keys, managing users, auditing access and more.

Unlike mechanical security, you can issue, reprogram or revoke a CLIQ key whenever you choose. Lost keys can't be revalidated.

## How CLIQ Local Manager makes day-to-day life easier

**For security managers and system administrators:**



**Extend control:** with the CLM interface



**Maintain security:** because each administrator has their own login



**Boost efficiency:** by setting custom reminders for important tasks

**For building users:**



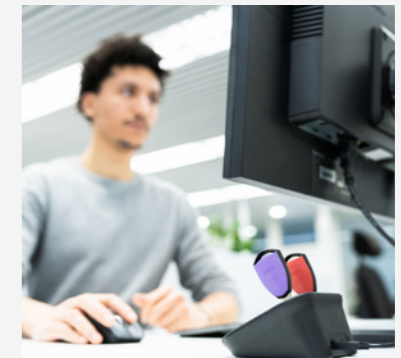
**Enjoy greater convenience:** when you update and revalidate keys remotely



**Waste less time:** with no need to return regularly to the management office



**Experience peace of mind:** because your data is private and protected



### INTUITIVE SOFTWARE

A user-friendly interface puts you in control from any PC or laptop



### IMPROVED SECURITY

Allocate access rights and collect audits from your desk or remotely



### REMOTE UPDATE

Time-saving, convenient, remote access management without an internet connection

# CLIQ Local Manager Remote

## A leap forward for offline access management

New CLIQ Local Manager Remote functionality gives you even more choice and flexibility in how you manage access.

It offers the advantages of online access management without any need to replace your existing CLIQ system.

Remote functionality helps security managers do more — and control more — from their familiar CLIQ Local Manager interface.



Time-saving, convenient, remote access management without an internet connection

## Save time and work more efficiently with Remote

CLIQ Local Manager Remote saves you time without the expense of installing new access management devices or connecting the system to the internet.

- Enable users to update keys remotely at up to 3 Wall Programmers
- Send jobs remotely from the CLM hub to the system via a controller
- Remotely change access authorization, set customized time, validity or schedules for all user keys
- Introduce key revalidation time to increase your system's security
- Retrieve audit trails remotely, so you can investigate any incidents fast

## COMPONENTS OF A CLIQ LOCKING SYSTEM



CLIQ Local Manager to manage access rights for key holders, doors and time periods



Update keys remotely without need to visit admin



Programmable, battery-powered keys



Wide range of programmable cylinders and padlocks for different access points

## Why choose intelligent key access management with CLIQ?

-  Cylinders and padlocks for **almost any opening**, inside or outdoors
-  **Fast installation** with one screw, no wires or drilling: Just swap cylinders
-  **Easy key programming** with new devices and user friendly software
-  Durable locking devices and keys with **battery life of up to 10 years**
-  **Extend your system** with new devices
-  Quickly **change how you use your spaces** by adding a CLIQ cylinder
-  Supplied by **trusted global company** with 140 years' experience



### GET IN TOUCH!

If you wish to receive more information, one of our experts in your area can get in touch.



9/2023

ABLOY offers security and locking innovations dedicated to creating more trust in the world. Combining digital and mechanical expertise, Abloy Oy develops industry-leading security solutions that protect people, property and business. Abloy is part of the ASSA ABLOY Group, the global leader in access solutions. Every day, we help billions of people experience a more open world.

**ASSA ABLOY SA  
(PTY) LTD**  
9 Nickel Road  
Technikon  
South Africa  
1725  
[za.info@assaabloy.com](mailto:za.info@assaabloy.com)  
[www.assaabloy.com](http://www.assaabloy.com)

Abloy maintains Product Security Center at [www.abloy.com/securitycenter](http://www.abloy.com/securitycenter). We recommend that you check the Center on a regular basis in order to be fully informed of product security updates, so that your knowledge of our products remains optimal.

It is the customer's responsibility to define the required level of security, whilst taking into consideration relevant factors for its operations. To achieve the overall level of security required in the customer's operations multiple layers of security must be in place. These include for example locking system, key management system, access management, CCTV and alarm system as well as physical security in a manner and level specified by the customer.

This content is protected by Intellectual Property Rights Laws. The title to the content shall not pass to you, and instead shall remain with Abloy Oy or a third party holding the title. Abloy develops continuously the products and solutions offered. Therefore, the information contained in the document is subject to change without notice. **ABLOY PROVIDES THIS CONTENT ON AN "AS IS" BASIS WITHOUT ANY WARRANTIES OF ANY KIND EXPRESS, IMPLIED, OR STATUTORY."**

