

## EXPERT OPINION No. 120003991.02

<b>Contracting party</b>	<b>Date of order:</b>	23 <sup>th</sup> October 2017
ASSA ABLOY Sicherheitstechnik GmbH Bildstockstraße 20 D-72458 Albstadt  Germany	<b>Date of expert opinion:</b>	24 <sup>th</sup> October 2017

### 1 Content of order

The overhead-door-closer according to EN 1154 „ASSA ABLOY DC700“ according to the certificate of constancy of performance no. 1121-CPR-AD5238 is to be equipped with an extended slide channel arm assembly and an extended door closer mounting plate with an electric door lock consisting of escape door release effeff model 332 and mortise lock effeff Model 807.

### 2 Basis for evaluation

The evaluation was based on:

- EN 1154:1996 /A1:2002 /AC:2006
- Certificate of constancy of performance no. 1121-CPR-AD5238
- Directive of electrical locking systems of doors in escape routes (EltVTR) – Version December 1997.
- Publication of the DIBt "Permitted changes and additions to fire protection and fire protection with smoke protection properties in the modified approval procedure (status: 01.12.2009)".
- Publication of the DIBt "Basic Remarks on the modified approval procedure for fire protection conclusions (status: 1. 12.2005)".
- Test certificate no. 12002494.10 for testing of the escape door strikes model series 332 according to EltVTR and the associated test report No. 120002494.1.
- Assembly and installation instructions of the safety door closer with integrated escape route locking system "ASSA ABLOY DC700G-FT", appendices 1 to 8.

---

This is the translation of "Gutachten Nr. 120003991.02" from 24<sup>th</sup> of October 2017.

In case of any misunderstandings the signed german version is valid only.

This expert opinion comprises 2 pages and 8 appendices.

Expert opinions may not be published or changed without prior consent without the consent of the MPA NRW.

The shortened reproduction of an expert opinion is permitted with the consent of the MPA NRW only.

### 3 Expert opinion

The performance characteristics of the door closer DC700 according to DIN EN 1154 are not impaired by the installation of the escape door release in the extended door closer housing and in the extended door closer slide channel arm assembly.

The performance characteristics and the permanent functionality of the electric locking has been proven by appropriate tests up to 200 000 test cycles. Thus, a negative influence of the electric door lock on the permanent self-closing properties of a fire door is not to be expected.

From a functional point of view, there are no objections to using the "safety door closer" with an integrated electric door release "ASSA ABLOY DC700G-FT" also on fire doors.

The provisions on subsequent changes and additions to fire protection regulations must be observed.

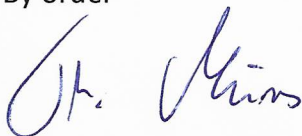
### 4 Validity

The validity of this expert opinion expires:

- a) at the latest on 23<sup>rd</sup> October 2022.
- b) if the standards and technical standards used for the assessment have changed, and
- c) technical changes have been made to the inspected component that have not been approved by the inspection body.

Dormund, 24<sup>th</sup> October 2017

By order



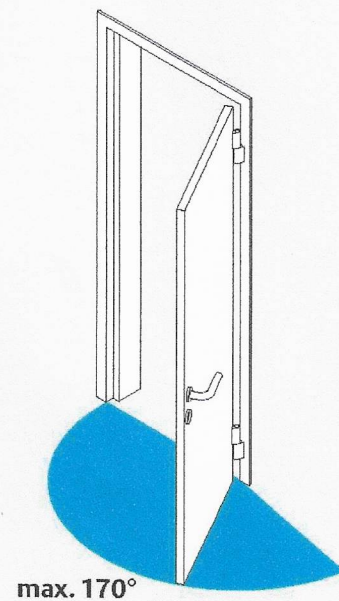
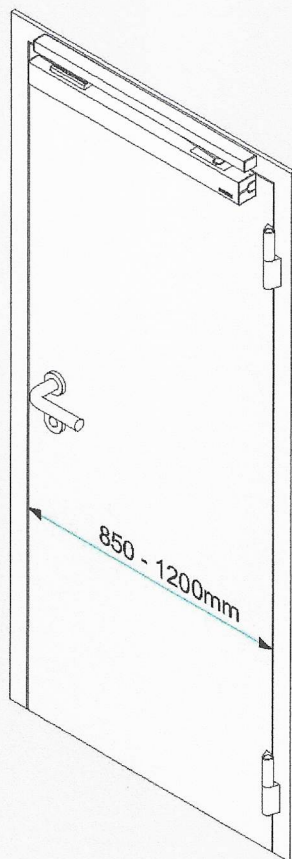
Th. Meinks  
Regierungsbauoberinspektor

DC700G-FT

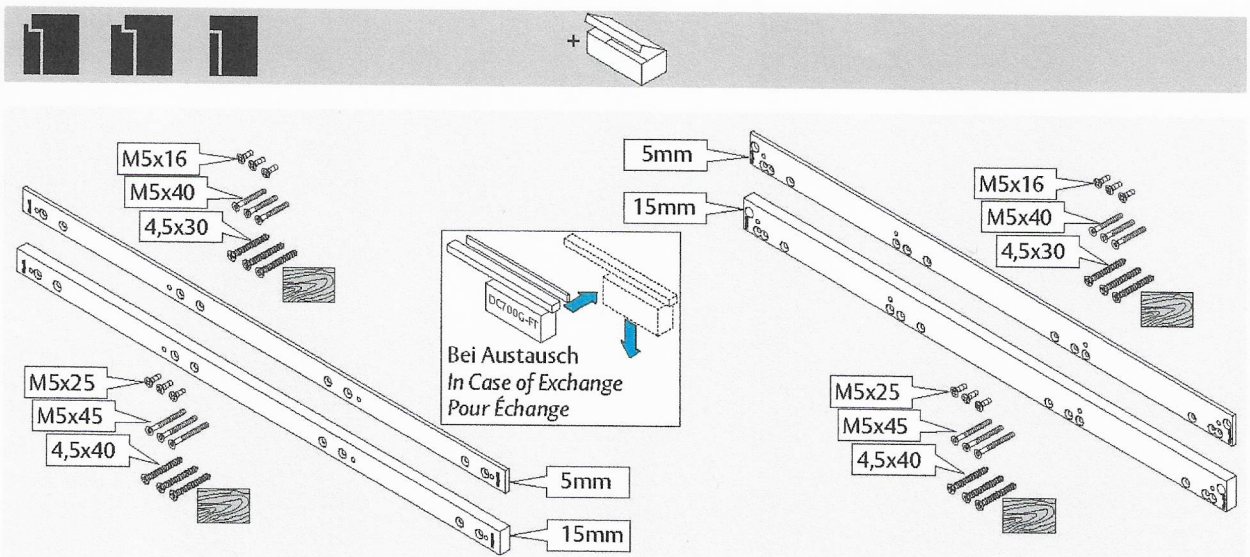
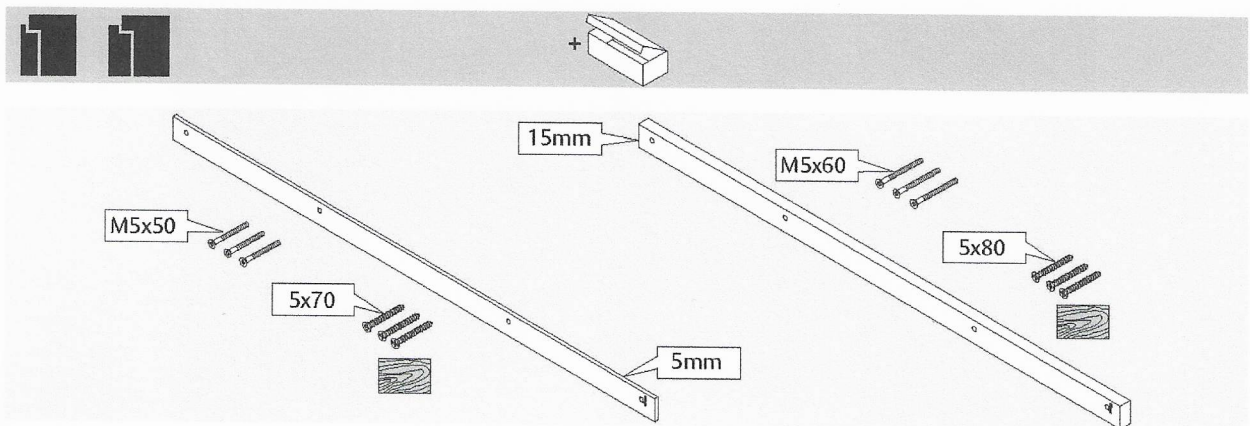
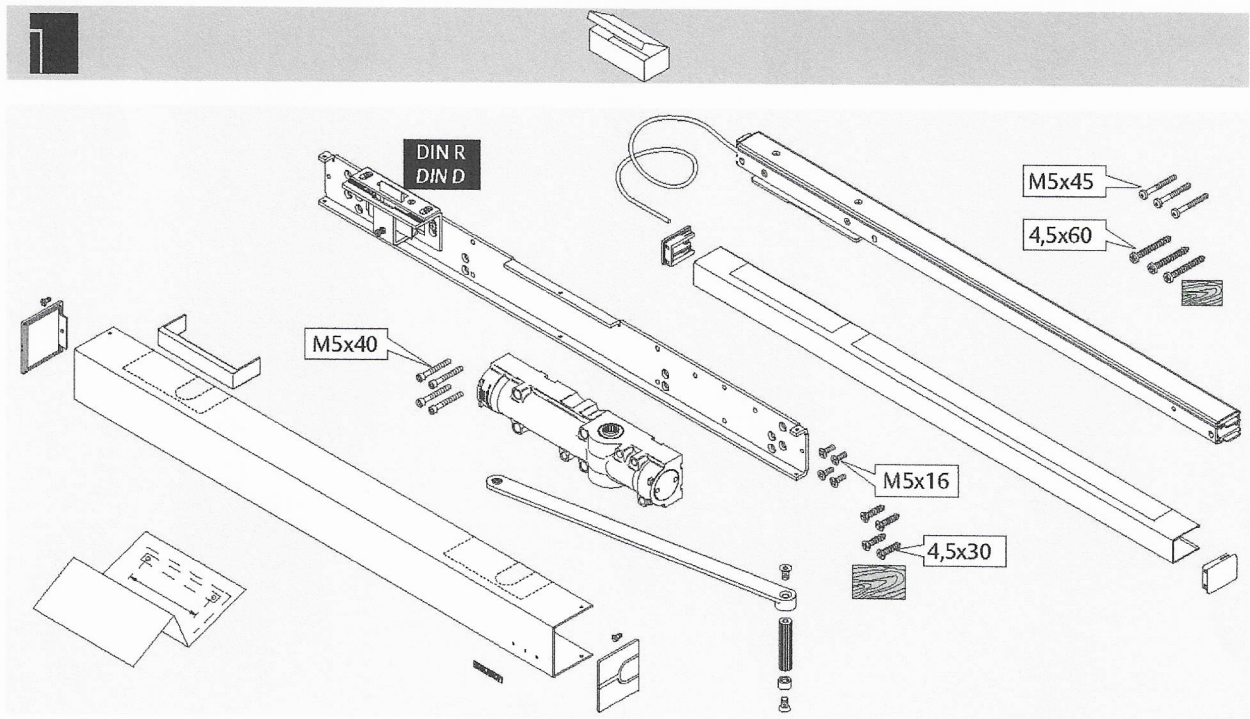
**ASSA ABLOY**

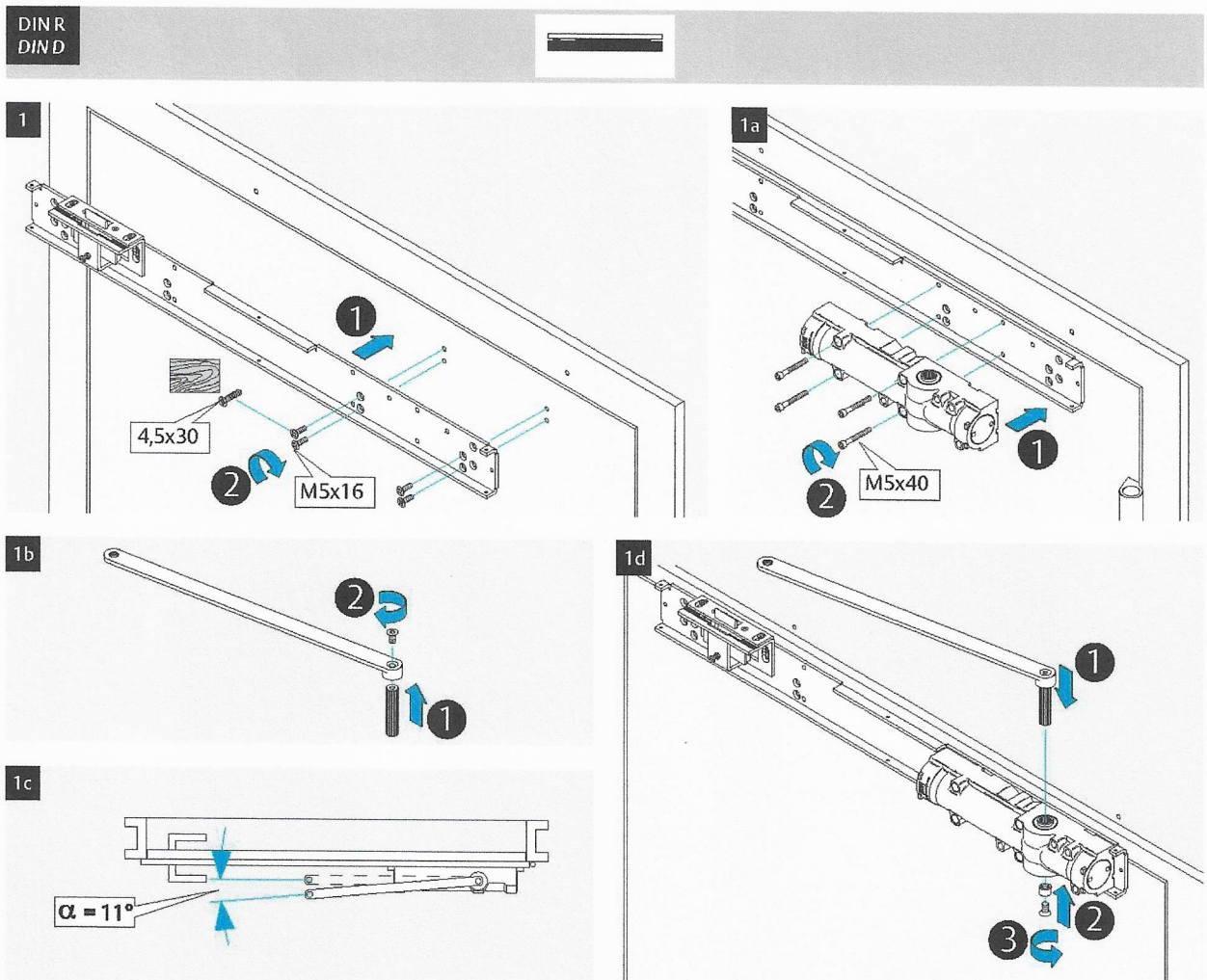
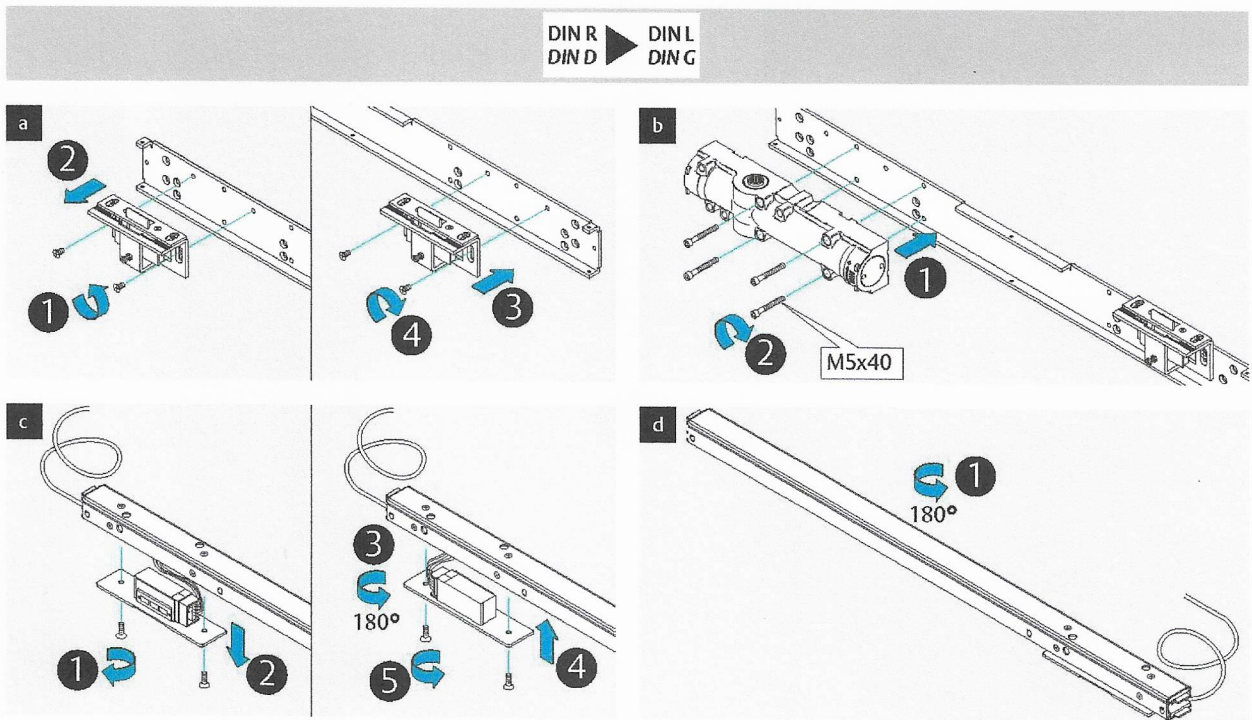
Montageanleitung  
 Mounting Instructions  
 Notice de montage

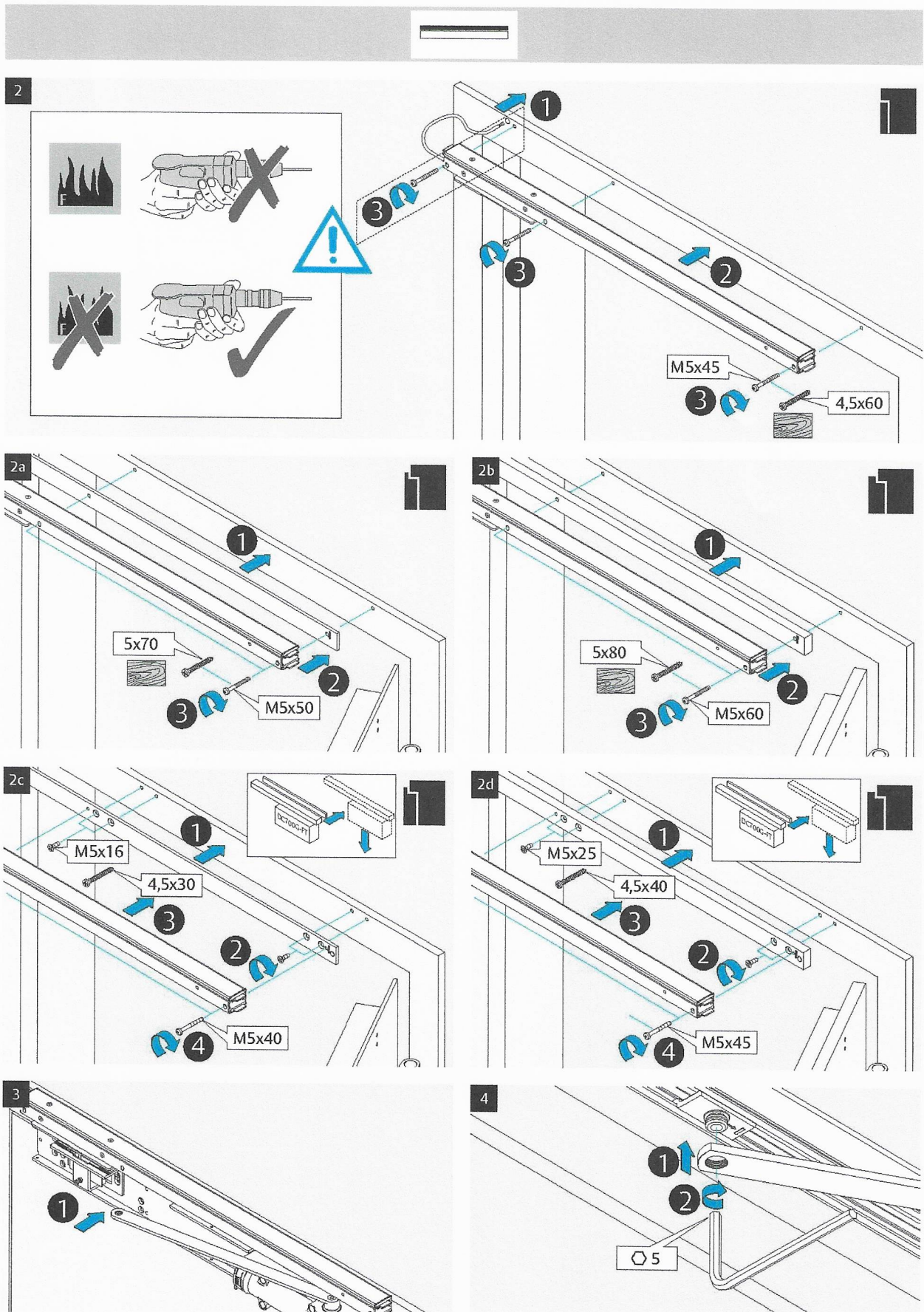
D1003904

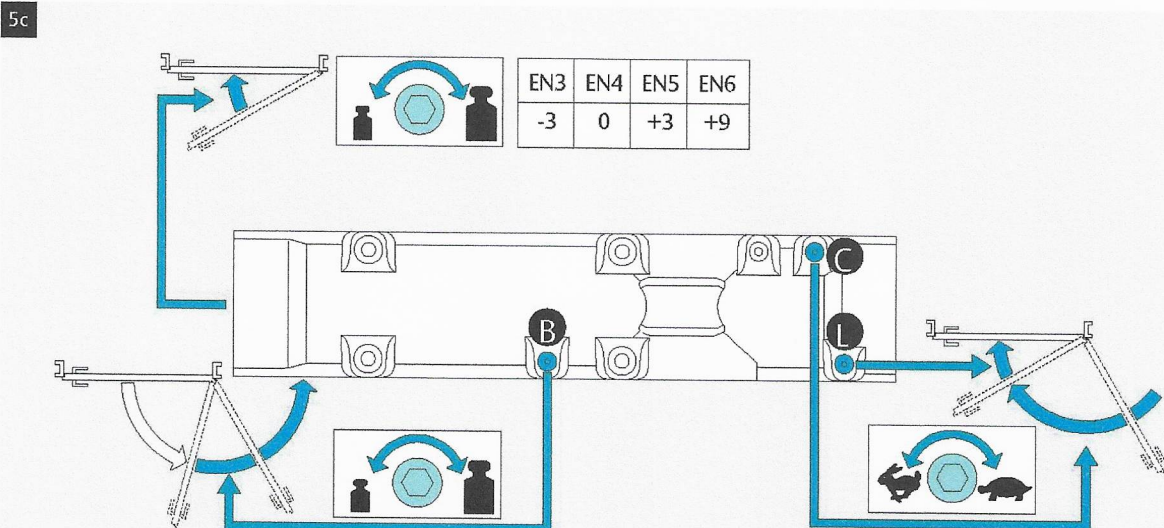
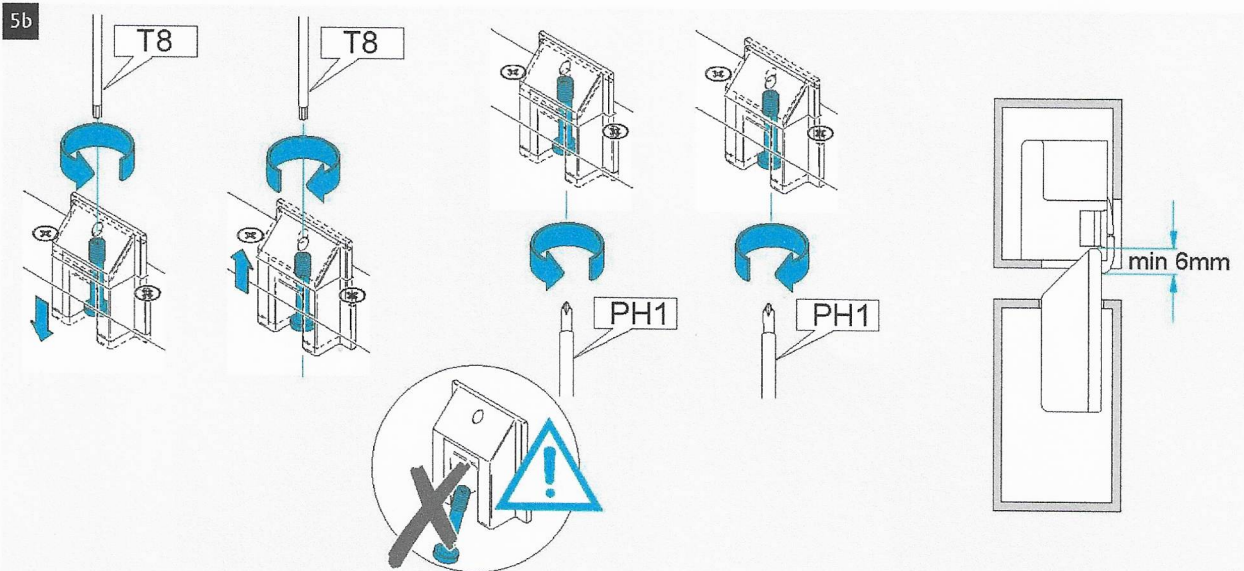
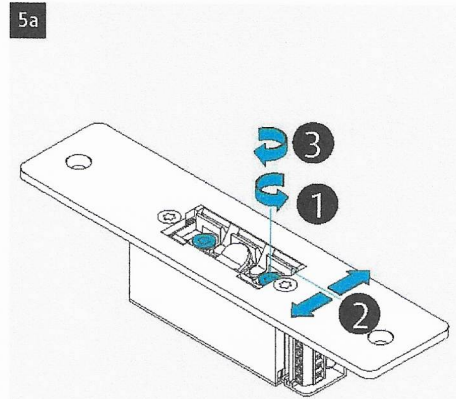
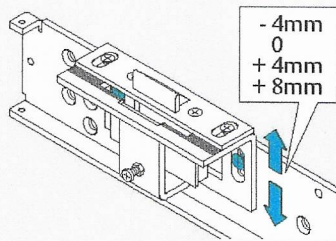
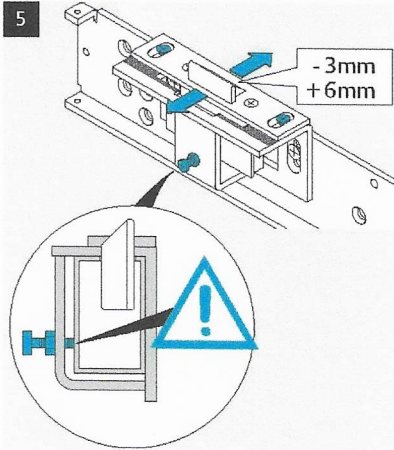


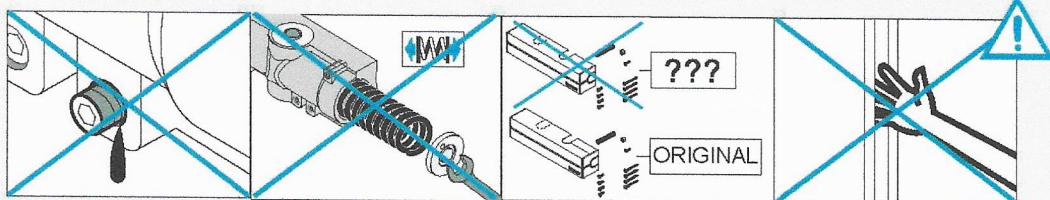
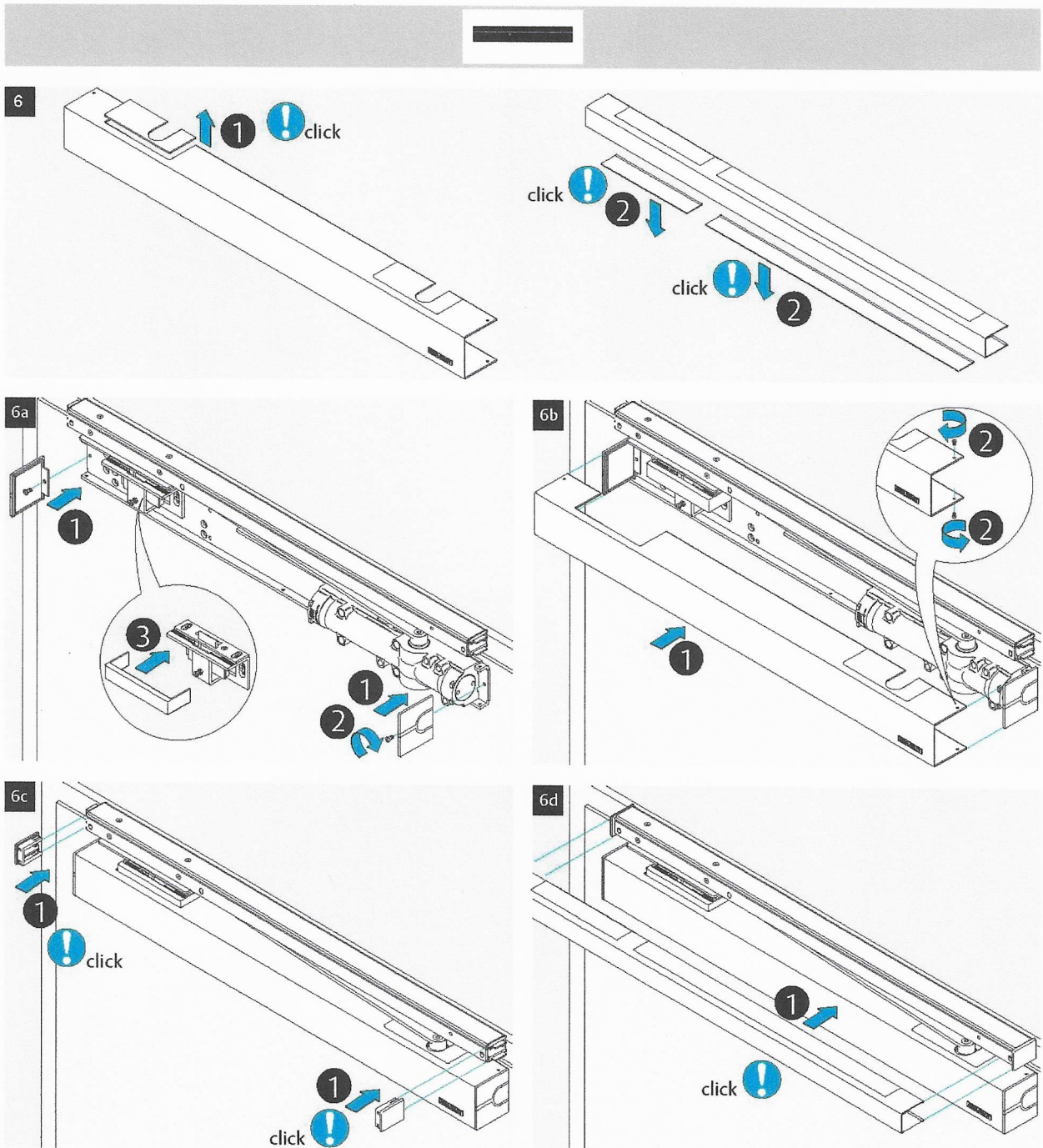
<b>CE</b>	Abloy OY PO Box 108 80101 Joensuu, Finland		10			
	1162-CPD-0464	EN 1154:1996+A1:2002	3	8	$\frac{6}{3}$	1 1 4

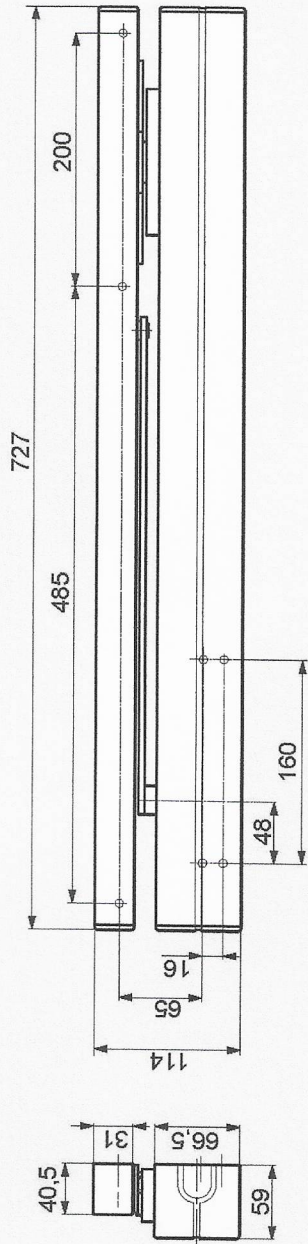




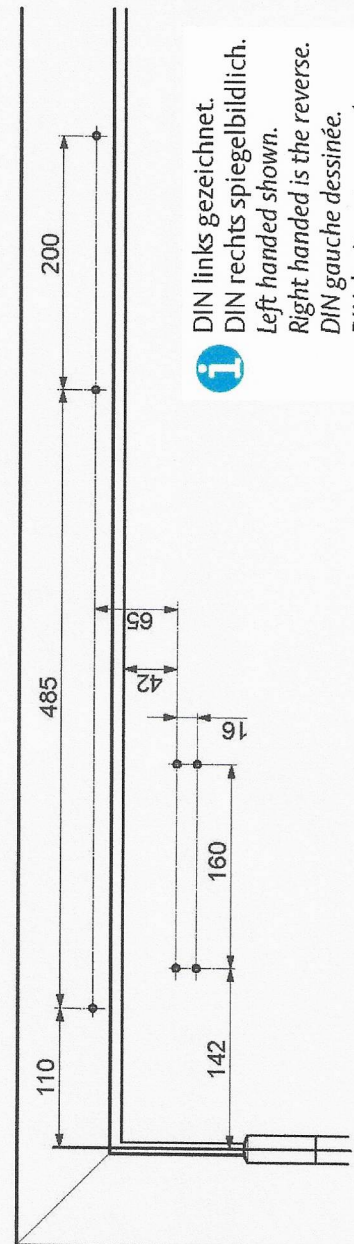
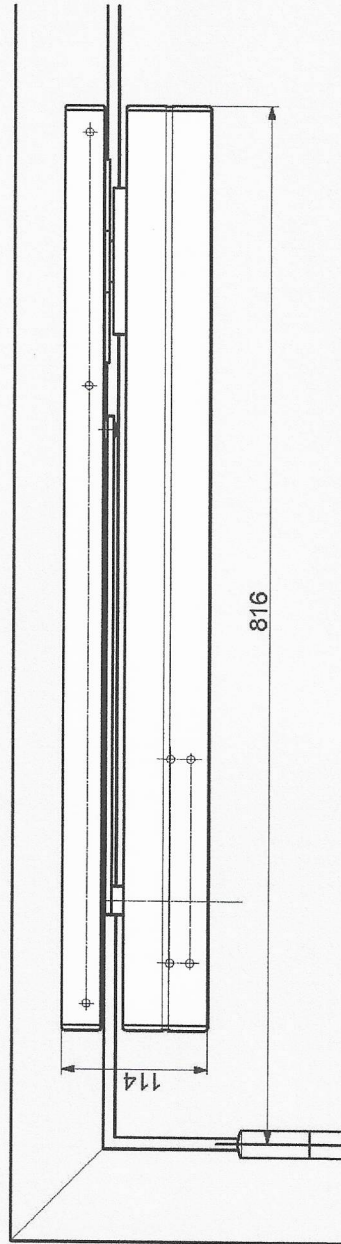
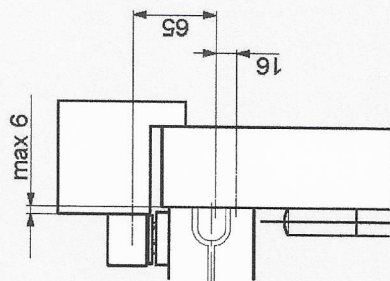








Abmessungen  
 Dimensions  
 Dimensions

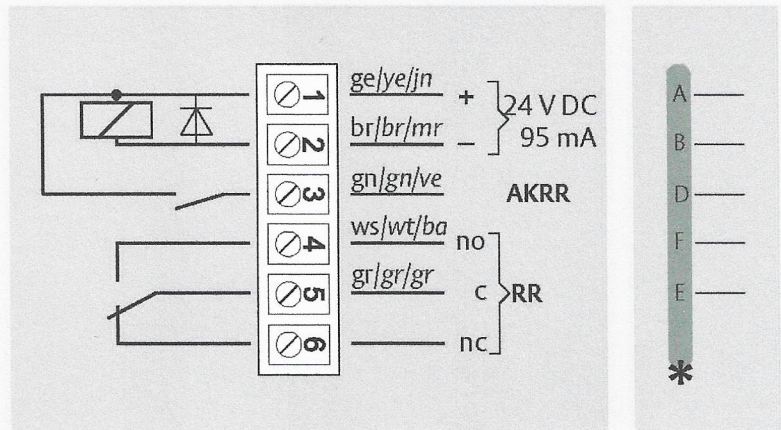
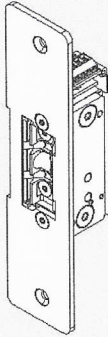


Anschlagmaße  
 Mounting dimensions  
 Dimensions de Montage

**i** DIN links gezeichnet.  
 DIN rechts spiegelbildlich.  
 Left handed shown.  
 Right handed is the reverse.  
 DIN gauche dessinée.  
 DIN droite est reversée.

**DC700G-FT Ausführung 24 V DC**  
**DC700G-FT Type 24 V DC**

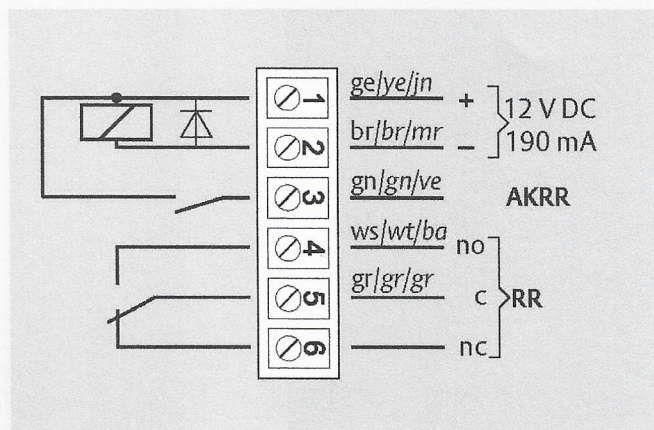
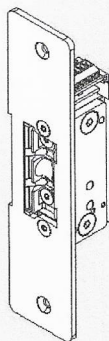
332 ... F91



- \* Anschluss an effeff-Fluchttürsteuergeräte.  
 Connection at effeff Escape Door Control Units.  
 Raccord aux dispositifs de terminaux de commande effeff.
- ⚠ Die Spannungen von Steuergerät und Türöffner müssen identisch sein!  
 Voltage of Strike and Control Unit have to be the same!  
 Les tensions des terminaux et des gâches électriques doivent être identiques.

**DC700G-FT Ausführung 12 V DC**  
**DC700G-FT Type 12 V DC**

332 ... E91



ASSA ABLOY is the global leader in door opening solutions, dedicated to satisfying end-user needs for security, safety and convenience.

**ASSA ABLOY**

ASSA ABLOY  
 Sicherheitstechnik GmbH  
 Werk Albstadt  
 Bildstockstraße 20  
 72458 Albstadt  
 GERMANY  
 Tel.: +49 (0) 74 31 12 3-0  
 Fax: +49 (0) 74 31 12 3-24 0  
 info@assaabloy.de  
 www.assaabloy.de