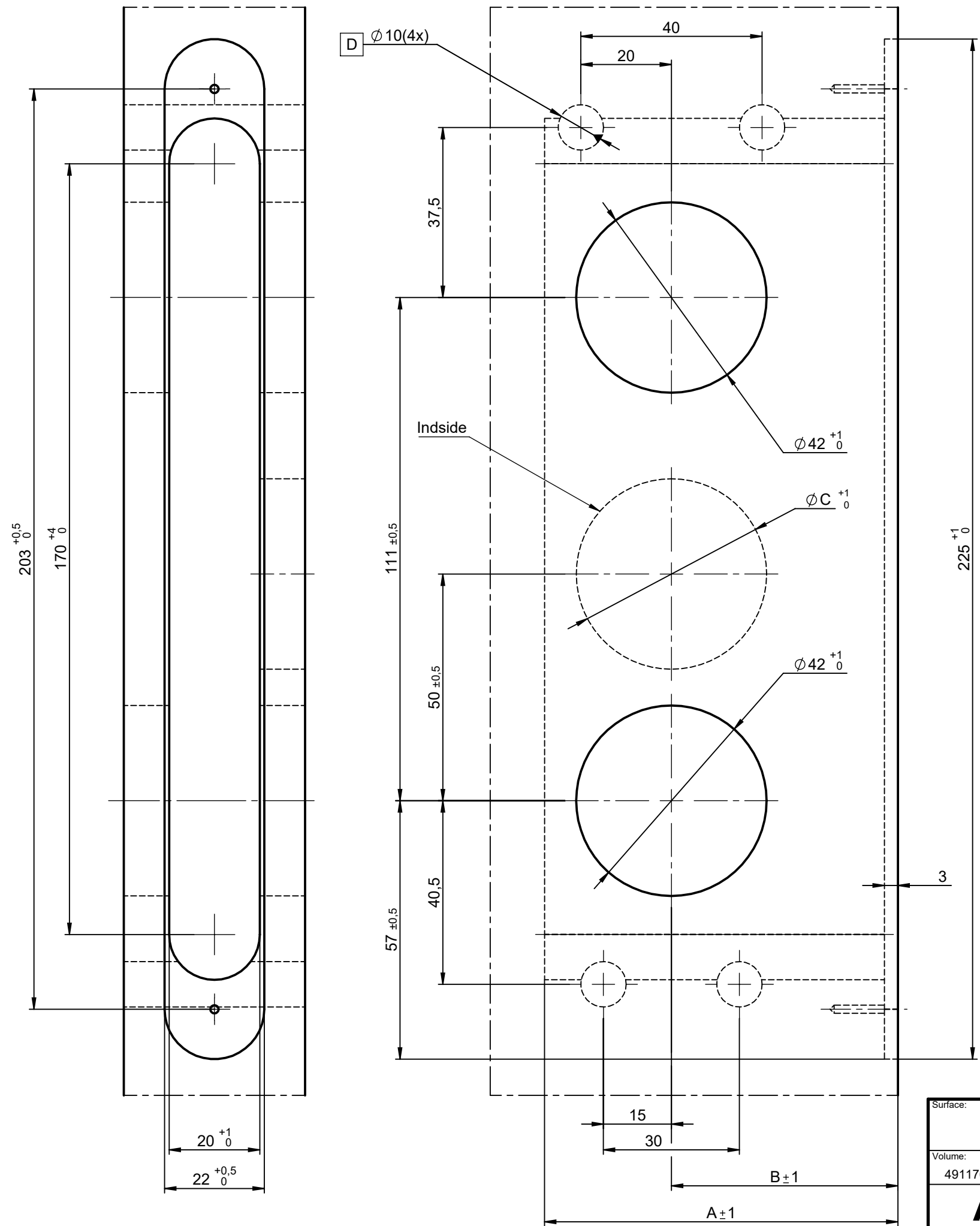


This work is copyright and no part may be reproduced, by any process, nor may any other exclusive right be exercised without the permission of ASSA ABLOY.

Revision	Date	Sign
6	2021-12-08	NeAv



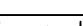
Backset dimension		
Backset	A (mm)	B (mm)
50	78 MIN	50
70	98 MIN	70

Centre cut	
Lock type	C (mm)
SS-EN 1125	24
SS-EN 179	42
ASSA 2000/2002	24
ASSA 2500	24



D - Holes pertaining to this dimension refer to accompanying fitting for lock cases in the SS-EN 179 series

Dimensions and tolerances in accordance with SS817383 unless otherwise specified

Surface:			Material:			General tolerance: ISO 2768-mK		
Volume: 491176.00	Weight: 491.18	Surface area: 96801.09 mm²	Created (YYYY-MM-DD): 2010-05-05	Designed by:	Drawn by: MaHi	Scale: 1:1 (A3)	Projection:	
<div>ASSA ABLOY</div> <div>ASSA ABLOY Scandinavia</div>			Mortise drawing Doorprep. Lockcase 50/70, 179			Alternate ID 357992		
						Document ID D000017120		Rev.: 6