

## SINGLE TOP

For single track sliding wardrobe doors. Max 45kg.

### APPLICATION

- For timber framed composite doors
- Silent – nylon wheeled ball bearing hangers and aluminium track
- Easily adjusted door height
- Alternative guide channel systems available

### DOOR SPECIFICATION

**Track System**                      **Single Top**

For Individual Doors:

Max Door Weight	45kg
Max Door Width	900mm
Door Thickness	16-40mm
Max Door Height	2400mm

### STANDARD SETS AND PACK

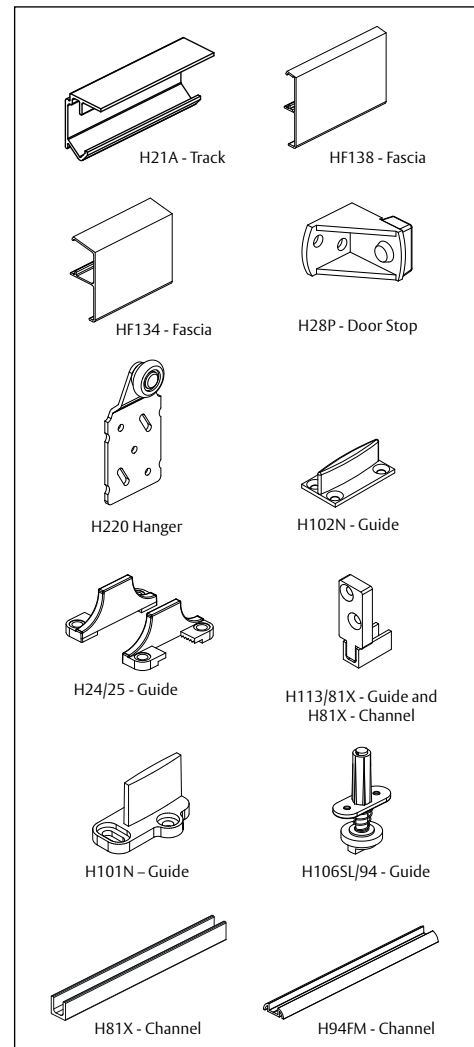
Sets comprise of jump-proof, face/soffit fixing aluminium section track, ball bearing hangers, nylon guides, rubber-buffered stop, all screws and fitting instructions.

Set No.	Opening width	Track length	Hardware for
<b>HST12</b>	600mm	1200mm	1 door
<b>HST15</b>	750mm	1500mm	1 door
<b>HST18</b>	900mm	1800mm	1 door
Pack No.	Application		
<b>HST01</b>	Single door fittings pack		

### HARDWARE SPECIFICATION

<b>Track</b>	<b>H21A</b>	Aluminium (3000mm length)
<b>Hangers</b> (2 per door)	<b>H220</b>	Outer offset hanger Nylon tyred wheel face fitted to the back of the door.
<b>Door Stop</b>	<b>H28P</b>	Rubber-buffered stop
<b>Guides</b>	<b>H24/25</b>	Nylon adjustable guide set <i>Included in sets and packs. Alternative guides available.</i>
<b>Accessories</b>		
Guides	<b>H101N</b>	Nylon saw cut guide
	<b>H102N</b>	Nylon saw cut guide
	<b>H106SL/94</b>	Spring loaded guide (suits H81X channel & H94FM channel)
	<b>H113/81X</b>	Nylon guide (suits H81X channel)
Channels	<b>H81X</b>	Aluminium channel (1200, 1500, 1800, 2400 & 3600mm lengths)
	<b>H94FM</b>	Aluminium channel (2000, 3000, 4000 & 6000mm lengths)
Pelmet	<b>HF134/#</b>	Fascia for soffit fixed applications for doors up to 38mm thick
	<b>HF134/ECP</b>	Fascia end cap pack
	<b>HF138/#</b>	Fascia for soffit fixed applications for doors up to 20mm thick
	<b>HF138/ECP</b>	Fascia end cap pack

*Note: Replace # with 2000, 3000 & 4000mm lengths. All fascia anodised finish*





HENDERSON

NOT TO SCALE

