

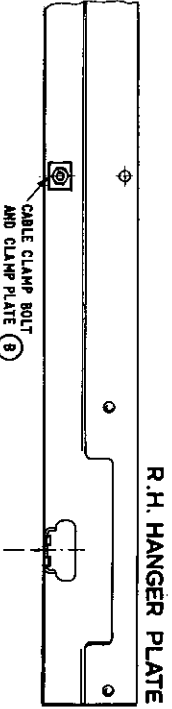
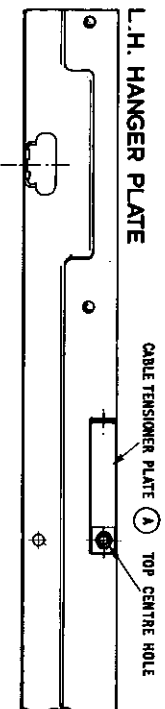
FIXING INSTRUCTIONS

FOR

SIMULTANEOUS ACTION UNIT No. 23

WITH 'PHANTOM II' BI-PARTING SLIDING DOOR GEAR

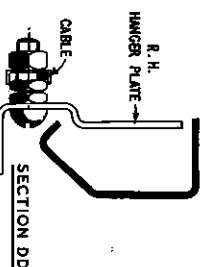
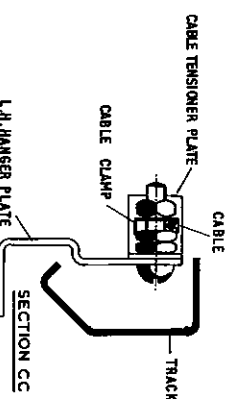
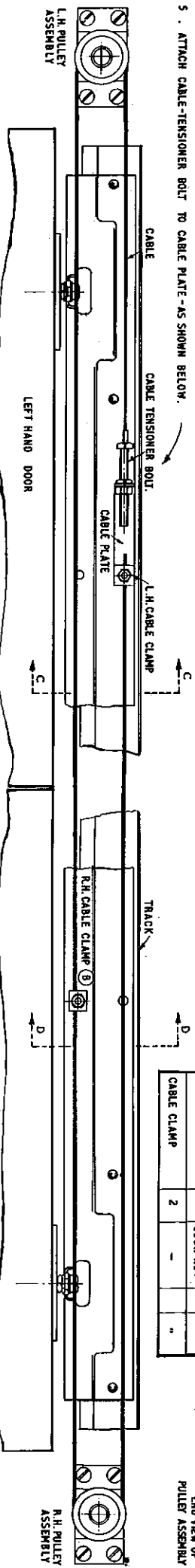
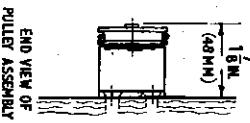
'PHANTOM II' GEAR



1. FIT CABLE-TENSIONER PLATE (A) TO TOP CENTRAL HOLE IN LEFT HAND HANGER PLATE WITH 1/4IN. B.S.W. SETSCREW AND TWO LOCKNUTS. TIGHTEN VERY SECURELY.
2. SECURE THE OTHER 1/4IN. SETSCREW IN LOWER CENTRE HOLE OF RIGHT HAND HANGER PLATE WITH 2 LOCK-NUTS. TIGHTEN VERY SECURELY. ADD CABLE-CLAMP AND FULL NUT-BUT DO NOT TIGHTEN. (B)
3. NOW HANG BOTH DOORS ON 'PHANTOM II' GEAR IN ACCORDANCE WITH SEPARATE INSTRUCTIONS. NOTE: FIXING BATTERY IF ANY, SHOULD BE LONG ENOUGH TO ACCOMMODATE THE PULLEY BRACKETS AT EACH END OF TRACK. IF DOORS ARE ALREADY HUNG - THE HANGER PLATES MUST BE REMOVED FOR STAGES 1 & 2 ABOVE.
4. FIT PULLEY ASSEMBLY AT EACH END OF TRACK WITH 4/1 1/4IN. (22mm) X 10 G WOODSCREWS - ENSURING THAT UPPER CABLE LINE WILL BE PARALLEL WITH THE TRACK.
5. ATTACH CABLE-TENSIONER BOLT TO CABLE PLATE - AS SHOWN BELOW.

6. TAKE CABLE OVER AND ROUND LEFT HAND PULLEY. LEAD CABLE UNDER AND ROUND THE RIGHT HAND PULLEY AND BACK TO CABLE CLAMP AT TOP OF LEFT HANGER PLATE. (ON CABLE TENSIONER BRACKET) PULL CABLE TAUT AND CLAMP SECURELY WITH CABLE CLAMP AND FULL NUT. CABLE-CLAMP SHOULD BE HORIZONTAL TO AVOID 'KINKING' THE CABLE. DO NOT CUT THE CABLE YET.
7. ENGAGE THE LOWER LINE OF CABLE BEHIND RIGHT-HAND (LOWER) CABLE CLAMP (B) LEAVING CLAMP LOOSE.
8. TAKE UP SLACK IN CABLE BY TENSIONER-BOLT. BUT DO NOT OVER TIGHTEN. LOCK SECURELY WITH LOCK NUT. CUT OFF EXCESS CABLE.
9. ENSURE THAT DOORS CLOSE CLOSE PULLY AT CENTRE OF OPENING. TIGHTEN RIGHT HAND CLAMP SECURELY. (CLAMP SHOULD BE HORIZONTAL.)
10. OIL PULLEY BEARINGS.

DESCRIPTION	NO. OFF	SCREWS, ETC.
PULLEY BRACKET ASSY	2	NO. 6 X 1 1/4" 8 ELECTRO GALV.
CABLE & CABLE TENSIONER ASSY.	25 FT. (7.6m)	FULL NUT 1 " "
CABLE TENSIONER PLATE	1	" "
CABLE CLAMP SCREW	2	PULL NUT 2 " "
CABLE CLAMP	2	" "



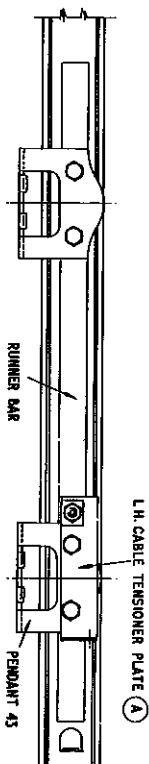
FIXING INSTRUCTIONS

FOR

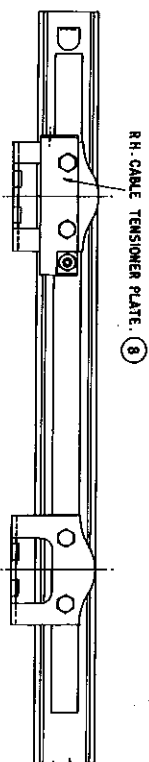
SIMULTANEOUS ACTION UNIT No 23

WITH 'MARATHON' BI-PARTING SLIDING DOOR GEAR

'MARATHON' GEAR



LH CABLE TENSIONER PLATE (1)

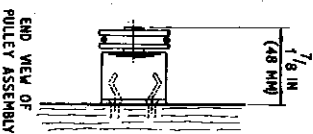


RH CABLE TENSIONER PLATE (8)

1. SECURE $\frac{1}{4}$ " IN. BSW. HD. SCREWS DEND HOLE ON LH CABLE TENSIONER PLATE (1) WITH TWO LOCK NUTS ON OUTSIDE. TIGHTEN VERY SECURELY.
(CABLE CLAMP AND PULL NUT BUT DO NOT TIGHTEN.)
(CABLE CLAMP SHOULD BE HORIZONTAL TO AVOID KINKING. AS SHOWN ON SECTION A.A)
2. REPEAT PROCEDURE FOR RH CABLE TENSIONER PLATE (8)
3. REMOVE INNER PENDANT 43 FROM RUNNER BAR USING $\frac{3}{4}$ " (76mm) LONG \times $\frac{1}{4}$ " BSW. HEX. HD. BOLTS. REPLACE PENDANT 43 ADDING CABLE TENSIONER PLATE (1) WITH CABLE CLAMP AT BOTTOM CORNER OF PLATE AS SHOWN.
NOTE: IF DOORS ARE ALREADY HUNG, REMOVE PENDANT BOLTS ONLY AND ADD CABLE TENSIONER PLATE AS ABOVE - SECURING THE DOOR AGAINST DAMAGE WHILE PENDANT IS UNBOLTED
4. REPEAT PROCEDURE FOR CABLE TENSIONER PLATE (8) AND WITH CABLE CLAMP IN THE TOP CORNER OF PLATE AS SHOWN.
5. NOW HANG BOTH DOORS ON 'MARATHON' GEAR IN ACCORDANCE WITH SEPARATE FIXING INSTRUCTIONS.
NOTE: FIXING BATTEN IF ANY SHOULD BE LONG ENOUGH TO ACCOMMODATE THE PULLEY BRACKETS AT EACH END OF THE TRACK.
6. FIT PULLEY ASSEMBLY AT EACH END OF TRACK WITH 4-1 $\frac{1}{4}$ " (122mm) LONG \times 10 G. WOODSCREWS. ENSURING THAT THE PULLEY ASSEMBLY IS FITTED CENTRALLY ABOUT TRACK. (SEE DRAWG. BELOW)
7. ATTACH CABLE TENSIONER BOLT THROUGH TOP HOLE ON LH CABLE TENSIONER PLATE (1) USING PULL NUT AND LOCK NUT AS SHOWN.
8. TAKE CABLE OVER AND AROUND RH PULLEY. ENGAGE CABLE BEHIND RH CABLE CLAMP. BUT DO NOT TIGHTEN. THREAD THE CABLE THROUGH LOWER HOLE IN RH CABLE TENSIONER PLATE (8) THEN UNDER AND AROUND LH PULLEY.
PULL CABLE TIGHT AND SECURE WITH CABLE CLAMP AND PULL NUT ON LH TENSIONER PLATE (1). CABLE CLAMPS SHOULD BE HORIZONTAL TO AVOID KINKING.
DO NOT CUT CABLE YET.
9. TAKE UP SLACK IN CABLE BY TENSIONER BOLT. BUT DO NOT OVER TIGHTEN
LOCK SECURELY WITH LOCK NUT. CUT OFF EXCESS CABLE.
10. ENSURE THAT DOORS CLOSE FULLY AT CENTRE OF OPENING. TIGHTEN RH CABLE CLAMP SECURELY.

11 OIL PULLEY BEARINGS

DESCRIPTION	NO	SCREWS, ETC
PULLEY BRACKET ASSY	2	NO 5 \times 1 $\frac{1}{4}$ " 8 ELECTRO GALV.
CABLE AND CABLE TENSION ASSY.	2	23-07 PULL NUT 1
CABLE TENSION PLATE.	2	"
$\frac{1}{4}$ " BSW CABLE CLAMP SCREW.	2	PULL NUT 2
CABLE CLAMP	2	LOCK NUT 4
$\frac{1}{4}$ " BSW HEX. HD. BOLTS $\frac{3}{4}$ " (19mm) LONG	4	"
		"



END VIEW OF PULLEY ASSEMBLY

