

**ASSA ABLOY**

Experience a safer  
and more open world

# Celestia Neo Wireless Guest Room Lock



Celestia Neo is crafted to complement modern interior design, seamlessly integrating with contemporary architectural hardware and door aesthetics.

Its refined, understated form elevates corridor appeal while allowing architects the freedom to realize their design vision. With a minimal visual footprint, Celestia Neo preserves the clean, elegant lines of any door it enhances.



**Data on Card**  
Electronic Lock on  
RFID technology



**Easy Installation**  
Fits a wide range  
of doors



**Auto Locking**  
Solenoid locking  
after 3 sec



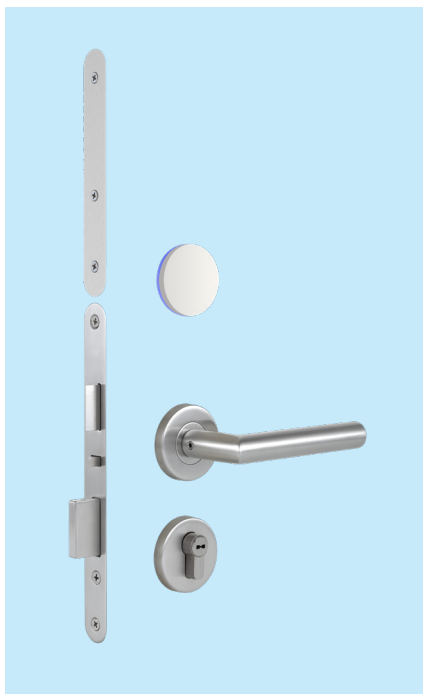
**Mechanical Key**  
Mechanical override  
cylinder



**Ingress Protection**  
IP55 rated

## Specifications

- Setting and authorizing lock information with handheld device
- Equipped with locking cylinder and mechanical key
- 1000 events audit trail
- Stand alone electronic lock with RFID technology
- Stainless steel handle, electroplated for durability
- 3-point stainless steel latch construction with antifriction mechanism.
- Mortise equipped with 20mm throw high strength deadbolt
- Panic release function - the deadbolt and latch are automatically retracted by inside handle for easy egress in emergency situation
- ADA compliant (guest with physical disabilities)
- Future proof re-programmable FLASH RAM lock memory
- Brand new batteries provide up to 1 year life time
- Compatible with BIS HOTEL software platform
- High security mechanical override cylinder



## RFID

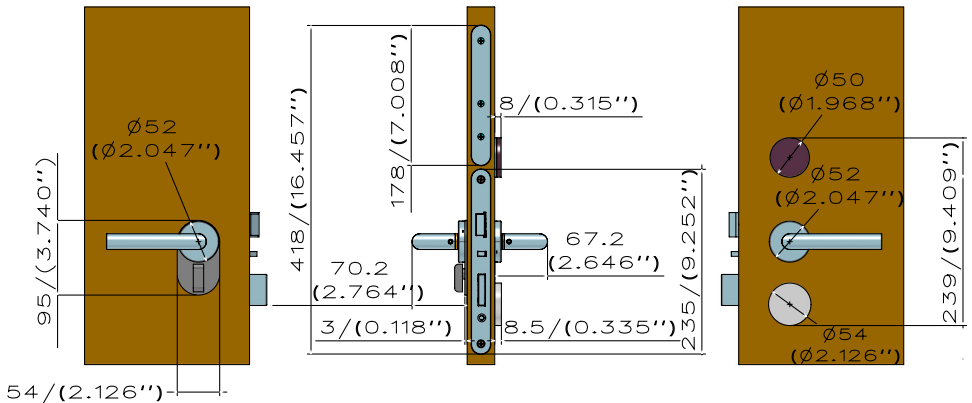
- 13.56MHz technology
- Compatible with the following standard: ISO 14443 A (MIFARE Classic)
- Eleven free sectors for future All-in-one card application use

This product provides convenient access but is not classified and should not be used as a security product or as a component of a security system. This product is for indoor use only and ASSA ABLOY does not take any responsibility for any loss resulting from incorrect installation or incorrect use of the product.

# Technical Data

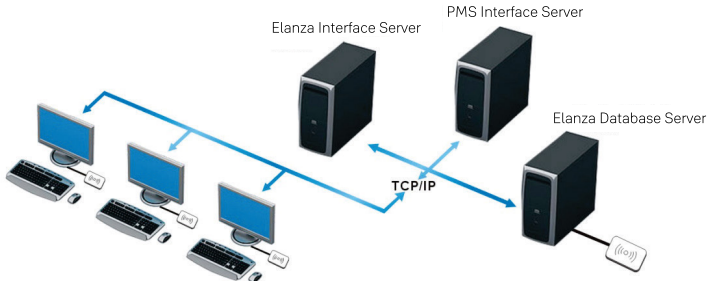
Power:	4 x 1.5V AA alkaline batteries
Battery Location:	Inside of the door
Material:	304 stainless steel, flame-retardant PC+PET
Metal Finishes:	Matte Black, Silver
Emergency Opening Options:	Emergency opening with mechanical cylinder
Locking Mechanism:	Electro-mechanical locking mechanism
Door Thickness:	35mm - 60mm
System Software Compatibility:	BIS Hotel
Storage Temperature:	-25 to 80 (non-condensing environment)
Tested Operating Temperature:	Tested from -25°C~70°C
Mortise:	Compatible with DIN 65 mortise
Supported RFID Standard:	ISO 14443 A (MIFARE Classic)
DIN Lock Case Variants:	DIN DB
DIN Lock Case Widths:	24mm/0.95 inches
DIN Backset:	65mm/2.56 inches

# Dimensions

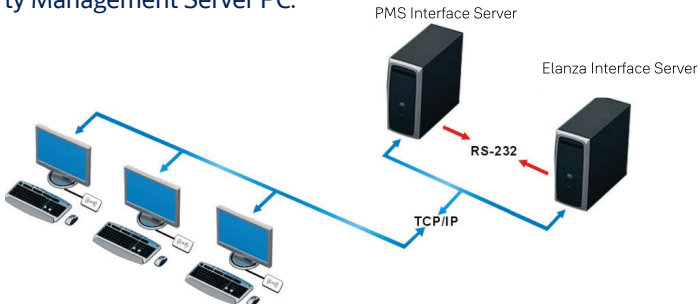


# Software Interface Options

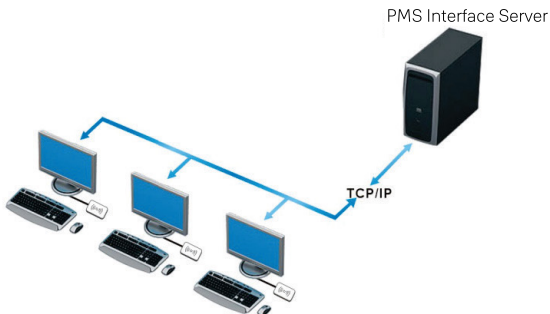
Property Management Software and the Hotel Lock Software servers share the same Ethernet network and the encoders connect to the Property Management Server PC.



Hotel Lock Software server is interfaced with Property Management software server using RS-232 and both the Servers are using the same Ethernet network. Encoders are connected to the Property Management Server PC.



Hotel Lock Software runs on the Property Management Server and the encoder connects to the Property Management Server PC making it the easiest configuration process.



This product provides convenient access but is not classified and should not be used as a security product or as a component of a security system. This product is for indoor use only and ASSA ABLOY does not take any responsibility for any loss resulting from incorrect installation or incorrect use of the product.

# The ASSA ABLOY Group is the global leader in access solutions. Every day, we help billions of people experience a more open world.

[assaabloy.com](http://assaabloy.com)

ASSA ABLOY Opening Solutions  
Malaysia Sdn Bhd  
Level 1, East Wing,  
Wisma Consplant 1  
No 2, Jalan SS16/4  
47500 Subang Jaya  
Selangor, Malaysia  
Tel: +60 3 5651 7800  
Fax: +60 3 5613 3889 [myinfo@assaabloy.com](mailto:assaabloy.com/myinfo@assaabloy.com)  
[PT](http://assaabloy.com.my)

ASSA ABLOY Indonesia  
Pondol Indah Office Tower 5  
7th Floor, Suit 707-708  
Jl. Sultan Iskandar Muda Kav. V-TA  
Jakarta Selatan 12310,  
Indonesia  
Tel: +62 21 2932 7910  
Mobile: +63 917 717 5932  
[assaabloy.com/id info.](mailto:assaabloy.com/idinfo)  
[id@assaabloy.com](mailto:id@assaabloy.com)

ASSA ABLOY Philippines Inc  
Unit A Ground Floor, Suntree Tower  
#13 Meralco Ave. Ortigas Center  
Brgy. San Antonio  
Pasig City, 1605 Manila,  
Philippines  
Tel: +63 2 8564 6615  
[assaabloy.com/ph info.](mailto:assaabloy.com/phinfo)  
[ph@assaabloy.com](mailto:ph@assaabloy.com)

ASSA ABLOY Singapore Pte Ltd  
#08-08 Siemens Center Blk 1  
60 MacPherson Road  
348615, Singapore  
Tel: +65 6880 0000  
Fax: +65 6880 0500  
[assaabloy.com/sg sales.](mailto:assaabloy.com/sgsales)  
[asg@assaabloy.com](mailto:asg@assaabloy.com) ASSA

ABLOY Vietnam  
20th Floor, 2Bis-4-6  
Le Thanh Ton St  
Ben Nghe Ward, Dist 1,  
Ho Chi Minh City,  
Vietnam  
Tel: +84 28 2249 8833  
[assaabloy.com/vn info.](mailto:assaabloy.com/vninfo)  
[vn@assaabloy.com](mailto:vn@assaabloy.com)

ASSA ABLOY Hong Kong Ltd  
16th Floor, Excel Centre,  
483A Castle Peak Road  
Cheung Sha Wan, Kowloon,  
Hong Kong  
Tel: +852 2260 0888  
Fax: +852 2686 8682  
[assaabloy.com/hk sales.](mailto:assaabloy.com/hksales)  
[hk@assaabloy.com](mailto:hk@assaabloy.com)

ASSA ABLOY Taiwan  
10F., No. 192-1, Sec. 4,  
Chengde Rd., Shilin Dist.,  
Taipei City 11167,  
Taiwan (R.O.C.)  
Tel: +886 2 2586 0161  
Fax: +886 2 2586 0171  
[sales.tw@assaabloy.com](mailto:sales.tw@assaabloy.com)

ASSA ABLOY (Thailand) Ltd  
9/261, Floor 26th  
UM Tower Building,  
Ramkhamhaeng Road,  
Khwaeng Suan Luang,  
Khet Suan Luang, Bangkok, 10250  
Tel: +66 2-180 5772  
Fax: +66 2-180 5774 [assaabloy.](mailto:assaabloy.co.th)  
[info.th.opening@as-](mailto:co.thinfo.th.opening@assaabloy.com)  
[saabloy.com](http://assaabloy.com)

#### Legal Disclaimer:

While every effort has been made to ensure that the information contained in this brochure is accurate at the time of its publication, yet ASSA ABLOY reserves its right to make changes in its products without prior notice. ASSA ABLOY will not be liable for any loss, injury or damage arising out of use of its products. The brochure does not constitute offer for sale of its products. ASSA ABLOY advises the use of its products for installation only by trained technicians.

Experience a safer  
and more open world

# ASSA ABLOY