

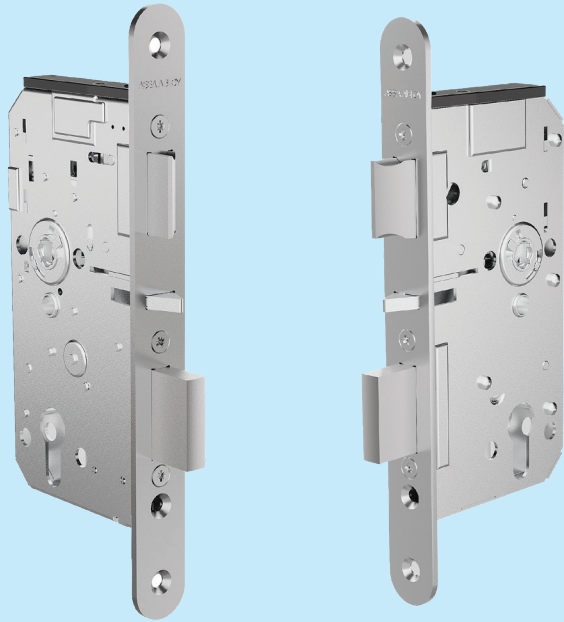
ASSA ABLOY

Experience a safer
and more open world

Electric Mortise Lock

ASSA ABLOY AA8600 Series





ASSA ABLOY AA8600 Series Electric Mortise Lock

Advanced Electromechanical
Security for Modern Entrances

The ASSA ABLOY AA8600 Series Electric Mortise Lock is a high-performance electromechanical locking solution designed for premium security applications. Engineered for high-traffic environments such as commercial buildings, industrial complex, data centre, and other high-security applications, the AA8600 Series combines mechanical robustness with intelligent electronic control. It combines a reinforced mechanical chassis with intelligent electronics, delivering secure lift-to-lock deadbolting, and multi-point status monitoring for full integration with access control system.

Key Features

- **Dual-Action Locking:** Lift the lever to throw the deadbolt; latch bolt automatically engages when the door closes.
- **Fail-Safe/Fail-Secure Modes:** Available in either power-to-lock or power-to-open modes based on security needs.
- **Mechanical Override:** Integrated keyed cylinder ensures access during power failure.
- **Free-Wheeling Exterior Lever:** Prevents forced entry when power is off.
- **Reversible Latch Bolt :** Easily adaptable for left- or right-hand doors.
- **Anti-Pick Protection:** Enhanced latch bolt design resists tampering.
- **Spring-Loaded Rosette Compatibility:** Ensures smooth lever return and aesthetic integration.
- **Reinforced Front Plate:** Provides added durability and resistance to forced entry.
- **Multiple Signal Outputs:** Real-time monitoring of lock status, including deadbolt, latch bolt, lever, door, and tamper signals.
- **Industrial-grade Materials:** SUS304 front plate, carbon-steel lock body, spring-steel components.
- **Certified to EN 14846, EN 1634, EN 179 and EMC standards** for code compliance across projects.

Applications

- Office and commercial building doors
- Industrial Complexes
- Data Centers

Technical Specifications

Parameter	Specifications
Operating Voltage:	12VDC or 24VDC (Specify when ordering)
Current Consumption:	300mA @ 12VDC / 150mA @ 24VDC
Operating Mode:	Fail-Safe or Fail-Secure
Actuator Type:	Solenoid (Electromagnet)
Mechanical Life:	200,000 cycles
Operating Temperature	-25°C to +70°C
Operating Humidity:	10% to 90% RH
Storage Humidity:	10% to 95% RH
Door Thickness Compatibility:	35–55mm (standard), 56–100mm (optional)
Max Door Weight:	200kg
Backset:	60mm
Door Gap Requirement:	≤3mm between front and strike plates
Max Lever/Key Force:	25N

Signal Output Wiring

Signal Type	COM	NO	NC
Deadbolt Signal:	Yellow	Orange	Blue
Tamper Signal:	Green	Black	Red
Lever Signal:	Blue	Orange	Brown
Door Signal (DO):	Yellow	Green	-
Latch Bolt Signal:	Orange	Gray	Blue

Standards

The lock is manufactured and complies with the following standards:

- EN 179 - emergency exit device
- EN 1634 - fire resistance and smoke control test
- EN 61000 - electromagnetic compatibility (EMC)
- EN 14846 - locks and latches, electromechanically-operated locks and striking plates

Materials and Construction

The lock is built with high-grade materials for durability and performance:

- Lock Case and Spindle: Steel
- Auxiliary Bolt, Deadbolt Assembly, Latch Assembly, Strike Plate, Cylinder Escutcheon, Interior & Exterior Lever: SUS304 Stainless Steel
- Strike Box: Plastic
- Cylinder: Brass
- Signal Wires: Plastic & Copper
- Springs: Spring Steel Wire



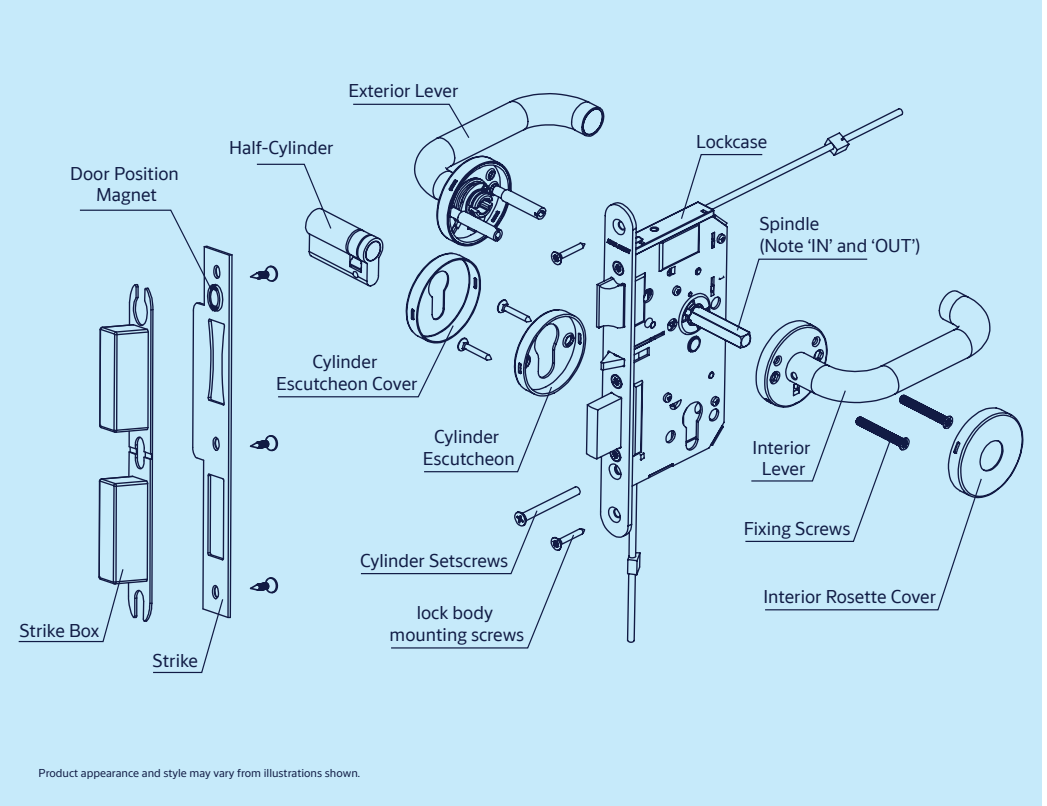
System Intergration

The AA8600 Series integrates with conventional access control panels (readers, REX, door contacts) using dry contacts and 12/24 VDC power.

Installation

Installation: Includes clear handing change instructions, drilling templates, and wiring diagrams.

Assembly Drawing:



Maintenance

Annual inspection recommended

Use graphite powder for key lubrication

Avoid oil based lubricants

Ordering Option

The lock is available in the following combinations:

Lock set + Handle Combination

AA8600-12-FSA-HDL - ASSA ABLOY AA8600 Series Electric Mortise Lock, 12V Fail Safe, with Handle Set

AA8600-12-FSE-HDL - ASSA ABLOY AA8600 Series Electric Mortise Lock, 12V Fail Secure, with Handle Set

AA8600-24-FSA-HDL - ASSA ABLOY AA8600 Series Electric Mortise Lock, 24V Fail Safe, with Handle Set

AA8600-24-FSE-HDL - ASSA ABLOY AA8600 Series Electric Mortise Lock, 24V Fail Secure, with Handle Set

Cylinder

AA C/30 - ASSA ABLOY Half Cylinder, 30mm

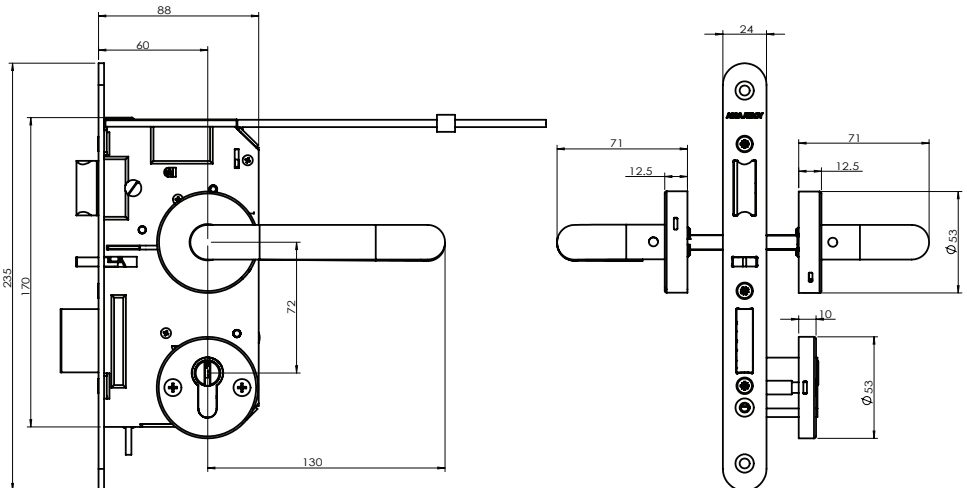
AA C/35 - ASSA ABLOY Half Cylinder, 35mm

AA C/40 - ASSA ABLOY Half Cylinder, 40mm

AA C/45 - ASSA ABLOY Half Cylinder, 45mm

AA C/50 - ASSA ABLOY Half Cylinder, 50mm

Dimensions:



Disclaimer:

Product specifications and features are subject to change without prior notice. Please contact our sales representative for the most up-to-date information.

The ASSA ABLOY Group is the global leader in access solutions. Every day, we help billions of people experience a more open world.

assaabloy.com

ASSA ABLOY Opening Solutions
Malaysia Sdn Bhd
Level 1, East Wing,
Wisma Consplant 1
No 2, Jalan SS16/4
47500 Subang Jaya
Selangor, Malaysia
Tel: +60 3 5651 7800
Fax: +60 3 5613 3889
assaabloy.com/my
info@assaabloy.com.my

PT ASSA ABLOY Indonesia
Pondol Indah Office Tower 5
7th Floor, Suit 707-708
Jl. Sultan Iskandar Muda Kav. V-TA
Jakarta Selatan 12310,
Indonesia
Tel: +62 21 2932 7910
Mobile: +63 917 717 5932
assaabloy.com/id
info.id@assaabloy.com

ASSA ABLOY Philippines Inc
Unit A Ground Floor, Suntree Tower
#13 Meralco Ave. Ortigas Center
Brgy. San Antonio
Pasig City, 1605 Manila,
Philippines
Tel: +63 2 8564 6615
assaabloy.com/ph
info.ph@assaabloy.com

ASSA ABLOY Singapore Pte Ltd
#08-08 Siemens Center Blk 1
60 MacPherson Road
348615, Singapore
Tel: +65 6880 0000
Fax: +65 6880 0500
assaabloy.com/sg
sales.aasg@assaabloy.com

ASSA ABLOY Vietnam
20th Floor, 2Bis-4-6
Le Thanh Ton St
Ben Nghe Ward, Dist 1,
Ho Chi Minh City,
Vietnam
Tel: +84 28 2249 8833
assaabloy.com/vn
info.vn@assaabloy.com

ASSA ABLOY Hong Kong Ltd
16th Floor, Excel Centre,
483A Castle Peak Road
Cheung Sha Wan, Kowloon,
Hong Kong
Tel: +852 2260 0888
Fax: +852 2686 8682
assaabloy.com/hk
sales.hk@assaabloy.com

ASSA ABLOY Taiwan
10F., No. 192-1, Sec. 4,
Chengde Rd., Shilin Dist.,
Taipei City 11167,
Taiwan (R.O.C.)
Tel: +886 2 2586 0161
Fax: +886 2 2586 0171
sales.tw@assaabloy.com

ASSA ABLOY (Thailand) Ltd
9/261, Floor 26th
UM Tower Building,
Ramkhamhaeng Road,
Khwaeng Suan Luang,
Khet Suan Luang, Bangkok, 10250
Tel: +66 2-180 5772
Fax: +66 2-180 5774
assaabloy.co.th
info.th.opening@assaabloy.com

Legal Disclaimer:

While every effort has been made to ensure that the information contained in this brochure is accurate at the time of its publication, yet ASSA ABLOY reserves its right to make changes in its products without prior notice. ASSA ABLOY will not be liable for any loss, injury or damage arising out of use of its products. The brochure does not constitute offer for sale of its products. ASSA ABLOY advises the use of its products for installation only by trained technicians.

Experience a safer
and more open world

ASSA ABLOY