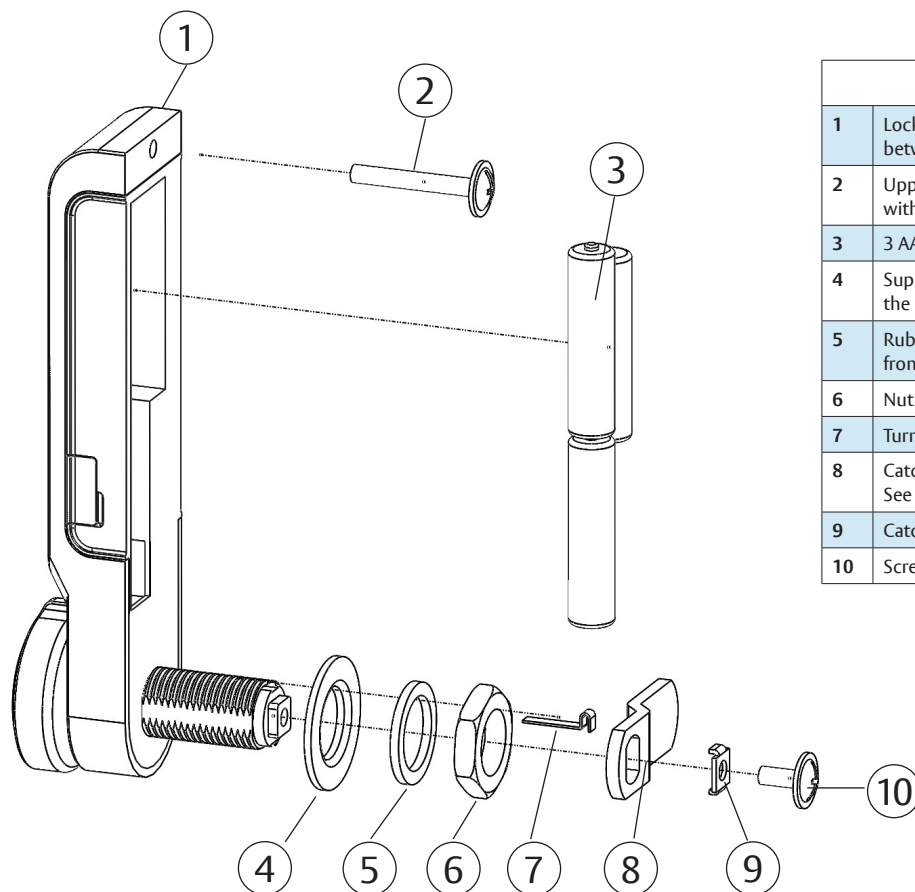


Assembly Guide

ASSA ABLOY
Opening Solutions

ASSA ABLOY PIN/SENSE

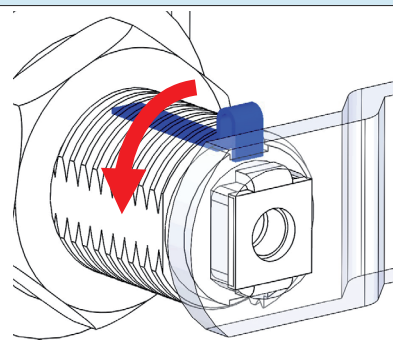


Included parts for assembly of lock

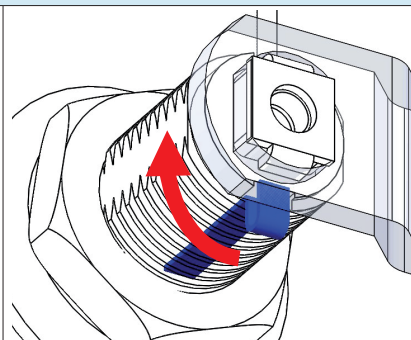
1	Lock. Available for assembly on doors with thickness between 1-15 mm and 15-23 mm.
2	Upper screw. Depending on the door thickness, use screw with proper length.
3	3 AAA batteries.
4	Support Ring. Used to center the lock and give support when the lock is assembled in a bigger hole.
5	Rubber Ring. Used to protect the door against scratches from the nut.
6	Nut.
7	Turn Limiter (see below).
8	Catch. Ordered separately to fit a specific locker. See catch data sheets.
9	Catch positioner.
10	Screw for assembly of catch.

Function of Turn Limiter

Without the turn limiter assembled, the catch can be turned both 90 degrees clockwise and counter clockwise



With the turn limiter assembled in upper position the catch can only be turned 90 degrees counter clockwise.



With the turn limiter assembled in lower position the catch can only be turned 90 degrees clockwise.

ASSA ABLOY Opening Solutions

Azerbaijan Office

Baku White City Office Building
25E Nobel Avenue AZ1025
Azerbaijan, Baku
Tel: +994 12 404 7880
info.az.openingsolutions@assaabloy.com

Kazakhstan Office

41 Kazybek bi str
Business Center "Park Palace", 1st Floor,
050010, Almaty,
Republic of Kazakhstan
info.kz.openingsolutions@assaabloy.com

www.assaabloy.com