



Alexander & Wilks	004 - 015
Manital	018 - 031
I Tesori Designer Collection	032 - 037
Serozzetta Designer	038 - 049
Serozzetta Contract	050 - 053
Serozzetta Residential	054 - 063
Traditional Handles	064 - 071
Mortice Knobs	072 - 081
Art Deco	082 - 085
Black Antique	086 - 091
Front Door Furniture	092 - 097

Did you know?

All our products come with a
10 year Mechanical Guarantee
(Unless otherwise stated)

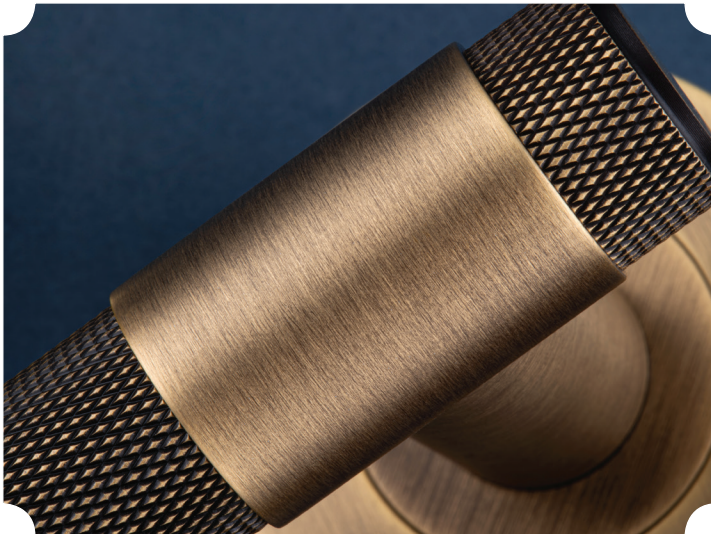
All our PVD products come with a
25 year Finish Guarantee





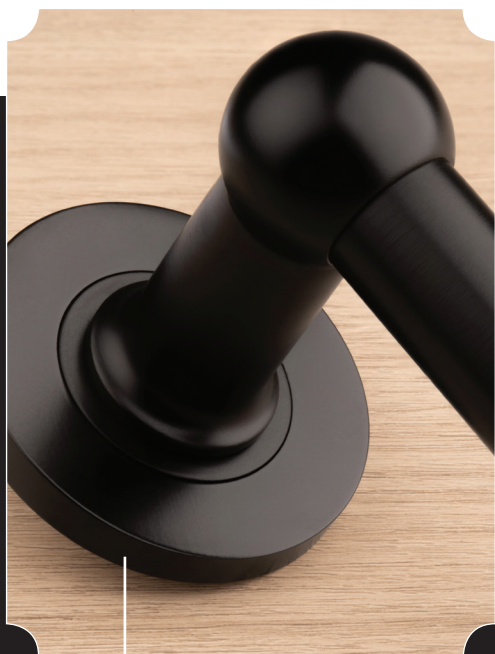
ALEXANDER & WILKS

Britain's finest ironmongery

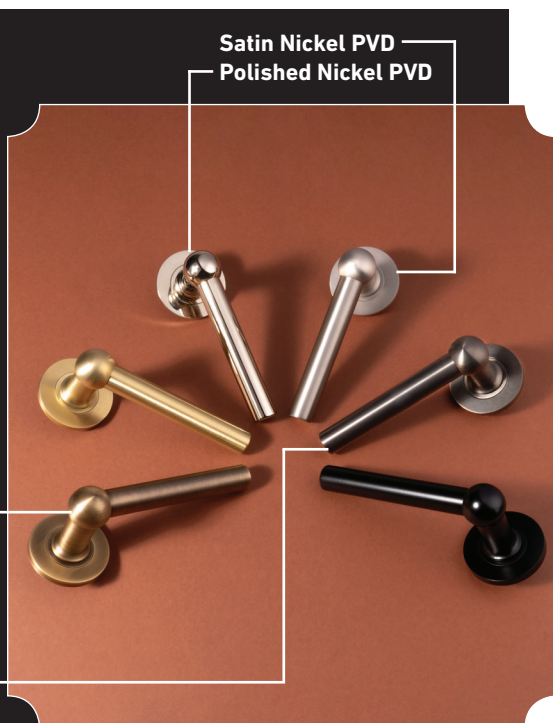


@alexanderandwilks

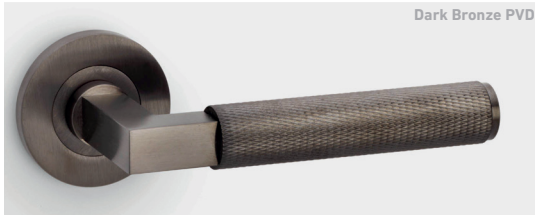




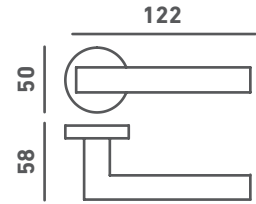
Antique Brass
Dark Bronze PVD
Matt Black
Satin Brass PVD



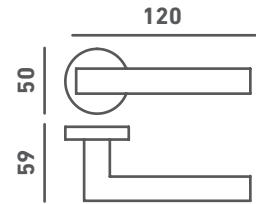
Exclusively crafted, uniquely designed



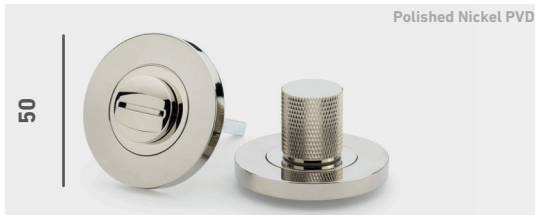
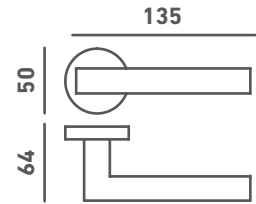
Knurled Hurricane
code: AW200



Knurled Harrier
code: AW210



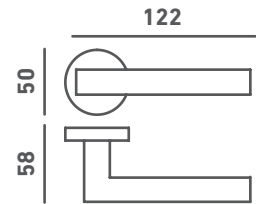
Knurled Spitfire
code: AW220



Knurled Thumbturn & Release
code: AW790



Plain Hurricane
code: AW201



Plain Thumbturn & Release
code: AW791

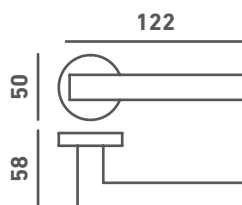


— Solid Brass —



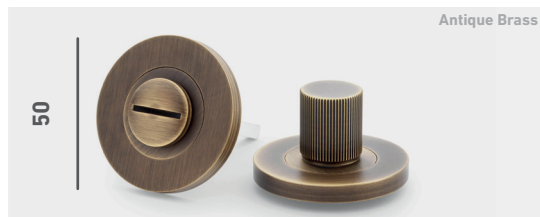
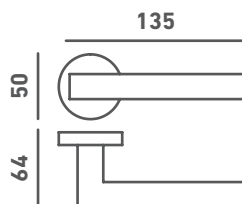
Reeded Hurricane

code: AW202



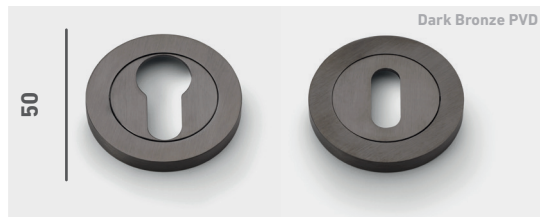
Reeded Spitfire

code: AW222



Reeded Thumbturn & Release

code: AW792



Escutcheons



Euro

code: AW390

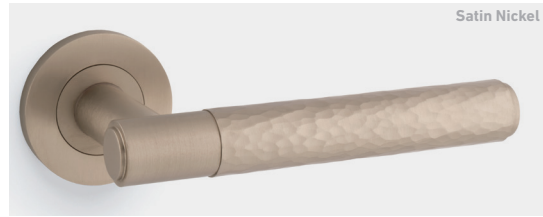
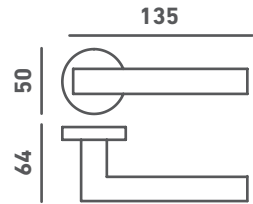
Lock

code: AW391



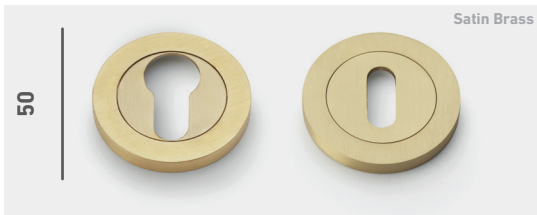
Hammered Spitfire

code: AW223



Hammered Thumbturn & Release

code: AW793



Escutcheons



Euro
code: AW390

Lock
code: AW391



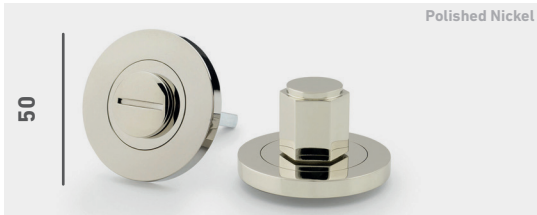
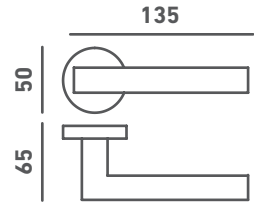
| Where texture... |
| meets tradition |



Black

Hex Spitfire

code: AW224



Polished Nickel

50

Hex Thumbturn & Release

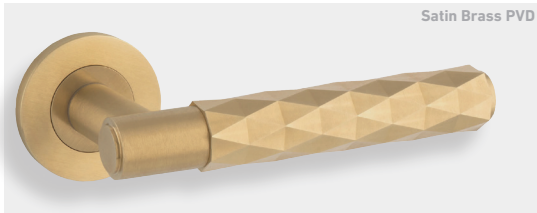
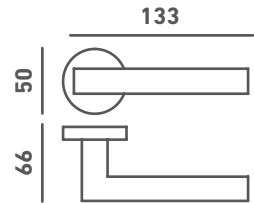
code: AW794



Dark Bronze PVD

Bamboo Spitfire

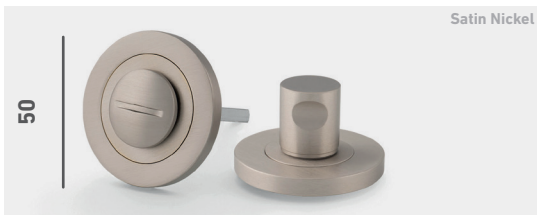
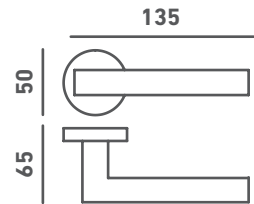
code: AW225



Satin Brass PVD

Diamond Spitfire

code: AW226

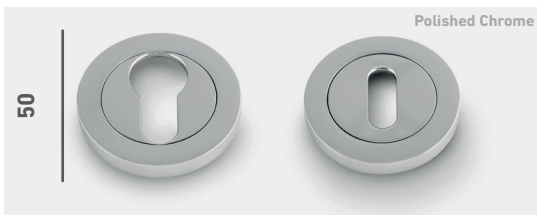


Satin Nickel

50

Plain Thumbturn & Release

code: AW791



Polished Chrome

50

Escutcheons



Euro
code: AW390

Lock
code: AW391



Earthy Neutrals



Finish | **Satin Brass PVD**

Lever on Rose: Diamond Spitfire

code: AW226SBPVD

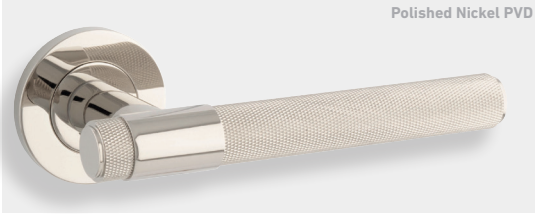
Diamond Cut Cylinder Cabinet Knob

code: AW847-30-SBPVD



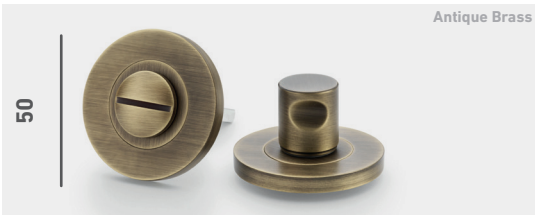
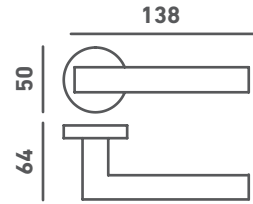
Colour Inspiration :





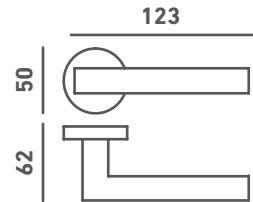
Knurled Kingston

code: AW240



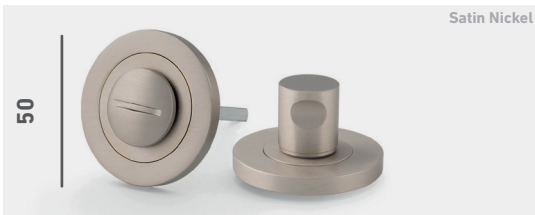
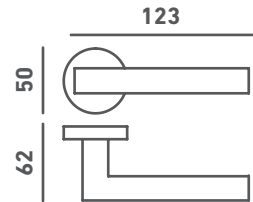
Plain Thumbturn & Release

code: AW791



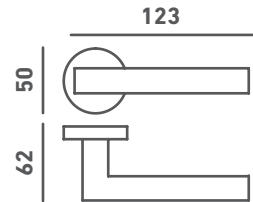
Siskin

code: AW250



Plain Thumbturn & Release

code: AW791



Escutcheons



Euro
code: AW390

Lock
code: AW391



HENDERSON

Scan me to view on our website



The most popular
PC Henderson products,
now stocked in Carlisle Brass
for next-day delivery

Compliment your door handles with our
cabinet & bathroom hardware

© CARLISLE BRASS

Cabinet & Bathroom Hardware



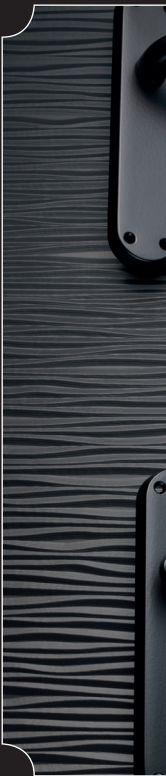
Scan here to view
the brochure on our
website!



Made in Italy



Other levers & finishes available as special order





Satin Chrome
Polished Chrome
Satin Brass
Matt Black

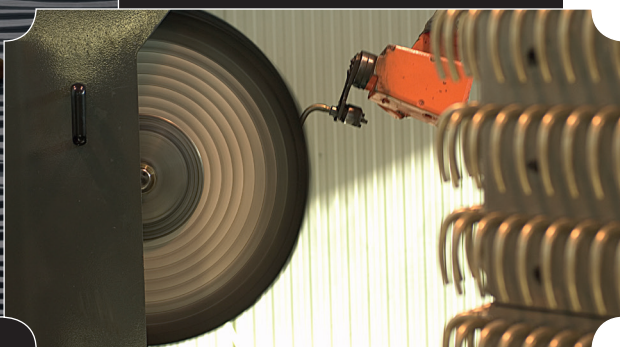
Exclusive to Carlisle Brass



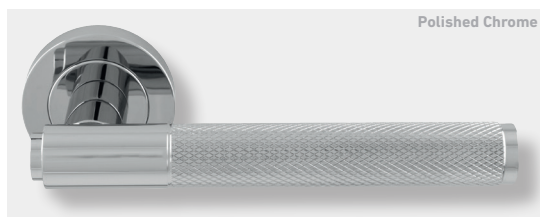
Italian design, effortless form



Designed with luxury in mind



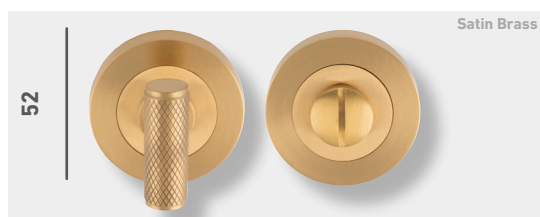
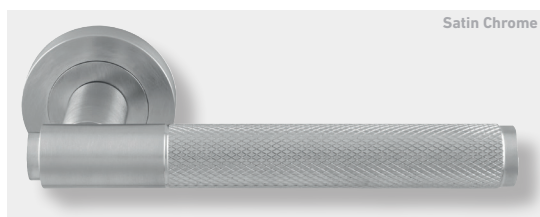
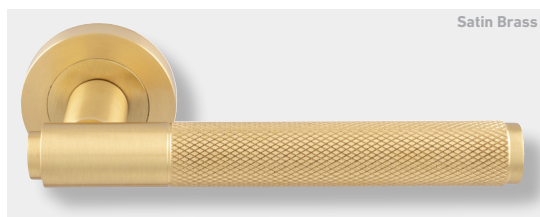
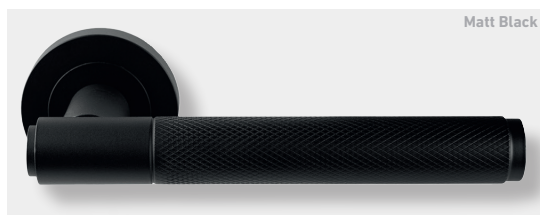
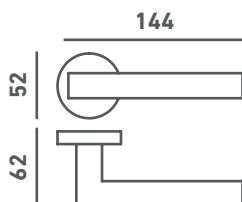
Made in Italy



Syntax

code: SX5

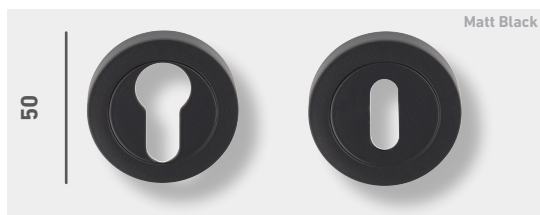
25^{yr} mechanical guarantee



Thumbturn & Release

code: ARTSY40

25^{yr} mechanical guarantee



Escutcheons

25^{yr} mechanical guarantee



Euro
code: EUL001

Lock
code: EUL002

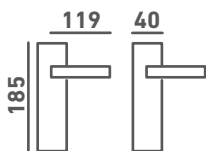


*Precision crafted,
distinctly Manital!*

Manital Brass

Ibra

FD30/60 Timber



Lock

code: EL11



Euro

code: EL11Y
(Unavailable in MB & SB)



Latch

code: EL12

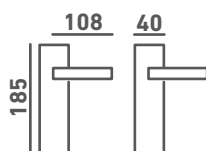


Bathroom

code: EL13

Astro

FD30/60 Timber



Lock

code: EL21



Euro

code: EL21Y



Latch

code: EL22

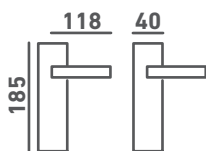


Bathroom

code: EL23

Lilla

FD30/60 Timber



Lock

code: EL31



Euro

code: EL31Y
(Unavailable in MB & SB)



Latch

code: EL32

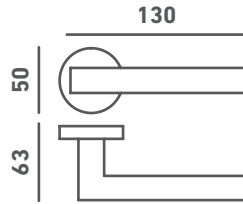
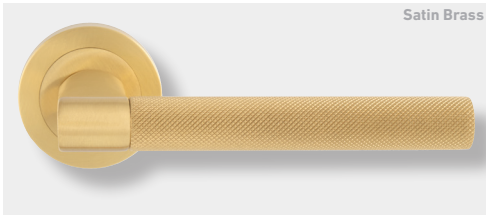


Bathroom

code: EL33

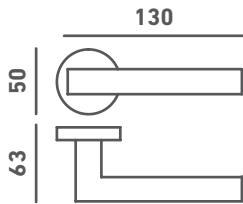
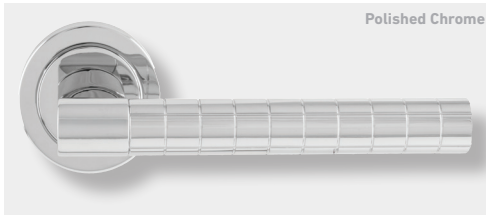
*Minimalism
with presence*





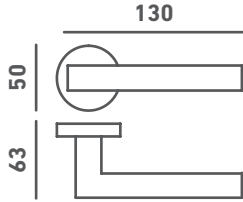
Hey Rete

code: HN5



Hey Quadra

code: HQ5



Hey Riga

code: HR5



Thumbturn & Release

code: EUL004

25^{yr} mechanical guarantee



Escutcheons

25^{yr} mechanical guarantee



Euro
code: EUL001

Lock
code: EUL002





AQ3CP



AQ4CP



AQ3SC



AQ4SC



AQ3



AQ4

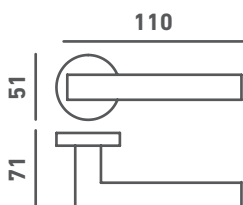
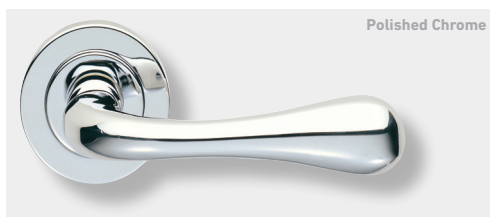


Apollo
code: AQ3

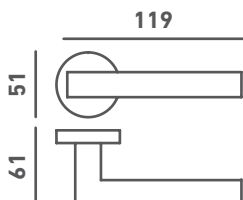


Calla
code: AQ4

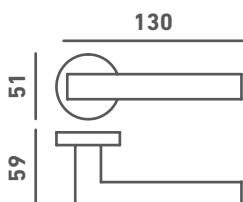




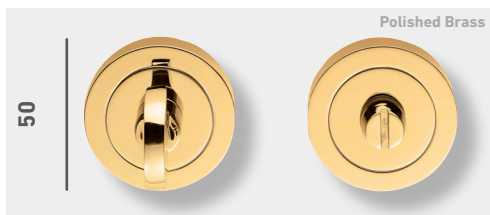
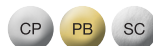
Astro
code: AQ1
FD30/60 Timber



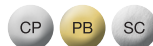
Studio H
code: AQ2
FD30/60 Timber



Giava
code: GI5
FD30/60 Timber



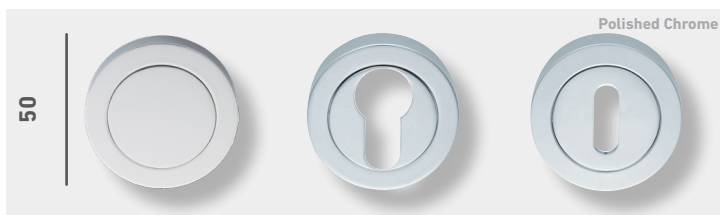
Thumbturn & Release
codes: AA12



code: AQ11
(with indicator)
(Unavailable in SC)

code: AQ12

Thumbturn & Release



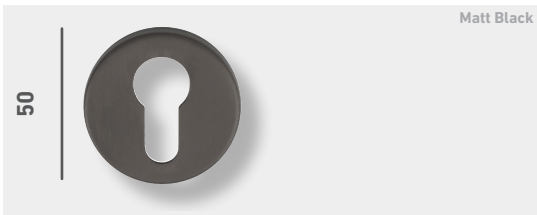
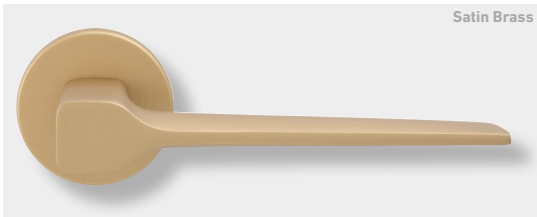
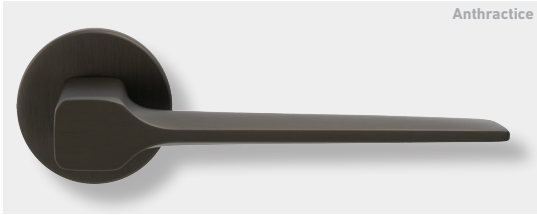
Blank
code: AA0
(Unavailable in SC)

Euro
code: AA1

Lock
code: AA3
(Unavailable in SC)

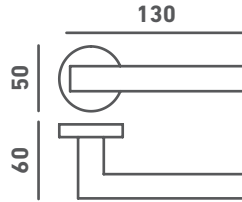
Escutcheons





Sonica

code: SC5



Thumbturn & Release

code: RE004



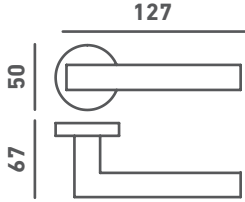
Escutcheons



Euro

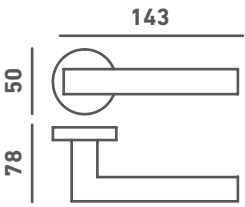
code: RE001





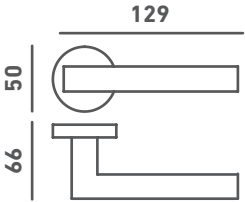
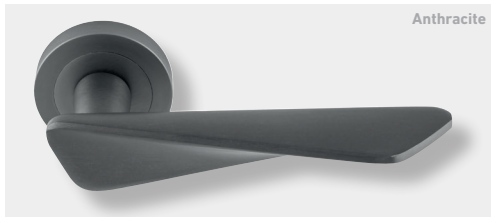
Dune
code: DU5

- AB
- ANT
- BLK
- CP
- MBRZ
- SB
- SC



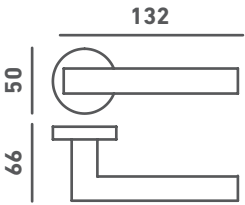
Hygge
code: HYD5

- AB
- ANT
- BLK
- SB
- SC



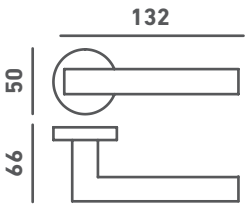
Intona
code: IN5

- AB
- ANT
- BLK
- CP
- SB
- SC



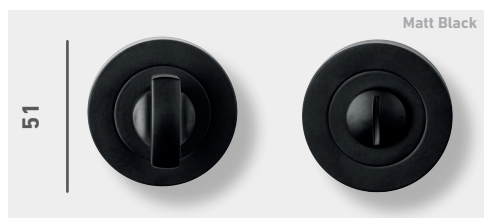
Master
code: MS5

- AB
- ANT
- BLK
- CP
- SB



Vortex
code: VX5

- AB
- ANT
- BLK
- SB



Matt Black

51



Antique Brass

51

Euro
code: EUL001

Lock
code: EUL002

Thumbturn & Release

code: EUL004

25^{yr} mechanical guarantee



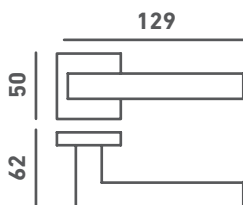
SC Thumbturn & Release to match available on page 027

Escutcheons

25^{yr} mechanical guarantee

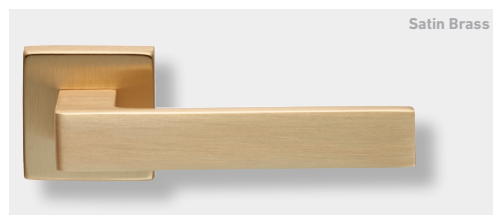


Black

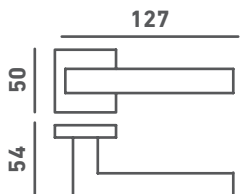


Flash

code: FH5

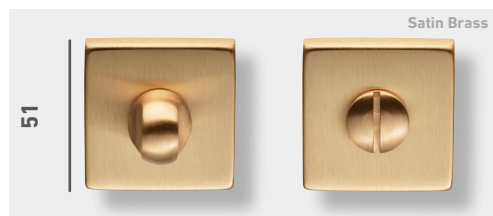


Satin Brass



Techna

code: TC5



Satin Brass

51

Square Thumbturn & Release

code: QT004



Black

50

Euro
code: QE001

Lock
code: QE003

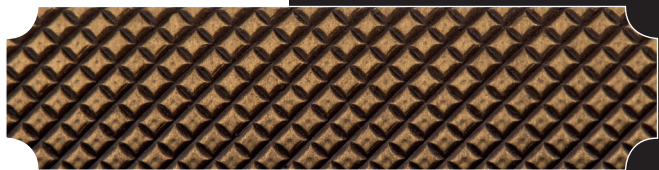
Square Escutcheons



I TESORI



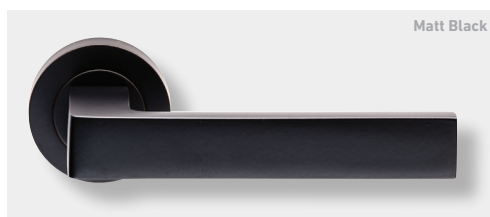
Craftmanship you can feel



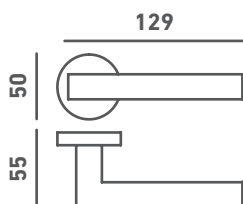


Complete
the look with
matching
accessories





Matt Black

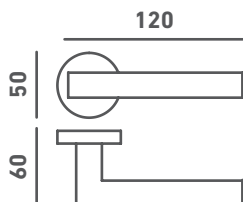


Sasso

code: EUL010
25^{yr} mechanical guarantee
FD30/60 Timber



Satin Brass

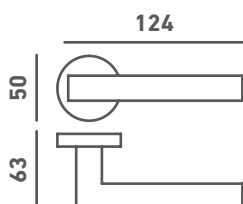


Velino

code: EUL020
25^{yr} mechanical guarantee
FD30/60 Timber



Matt Bronze



Trentino

code: EUL030
25^{yr} mechanical guarantee
FD30/60 Timber



Antique Brass

Thumbturn & Release

code: EUL004
25^{yr} mechanical guarantee



Polished Chrome

Escutcheons

25^{yr} mechanical guarantee



Euro
code: EUL001

Lock
code: EUL002

*Effortlessly
modern.*

★ BEST
SELLER

*Unmistakably
Varese.*



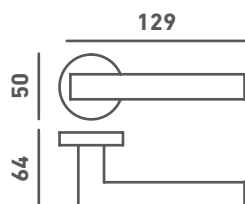
Varese

code: EUL050



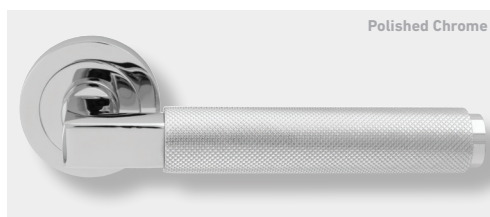


Matt Black

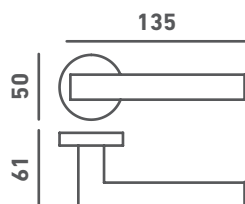


Amiata

code: EUL040
25^{yr} mechanical guarantee
FD30/60 Timber

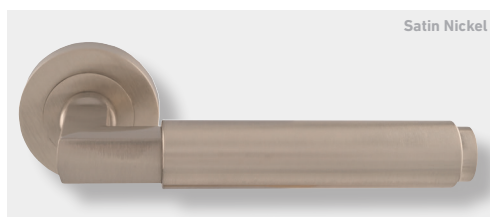


Polished Chrome

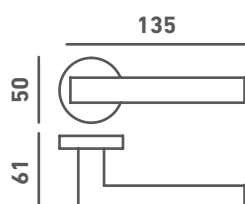


Terazzo

code: EUL060
25^{yr} mechanical guarantee



Satin Nickel



Masano

code: EUL070
25^{yr} mechanical guarantee



Satin Brass

50

Thumbturn & Release

code: EUL004
25^{yr} mechanical guarantee



Matt Black

51

Escutcheons

25^{yr} mechanical guarantee



Euro
code: EUL001

Lock
code: EUL002

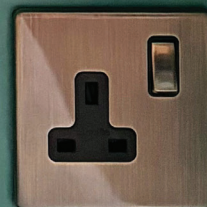
Match Eurolite switches and sockets to all of your Alexander & Wilks and Carlisle Brass Ironmongery.



CONCEALED



Take me to
the catalogue

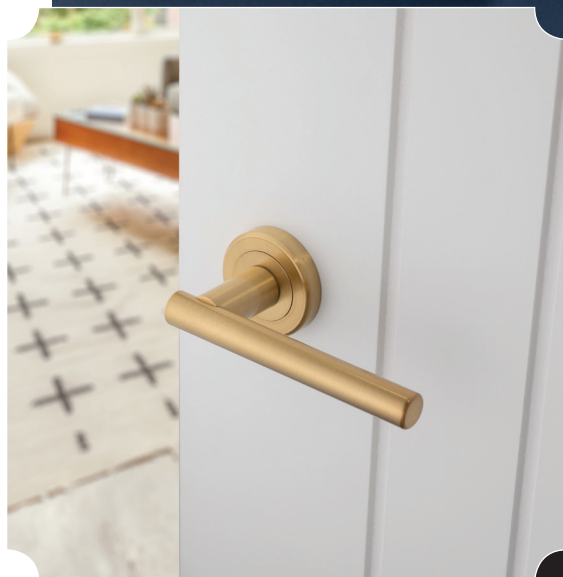


@at_home_with_izzy

 **SEROZZETTA**



Matt Black
Polished Chrome/Satin Nickel
Antique Brass



Plastic-free
packaging





Featuring a selection
of our best-selling
lever designs



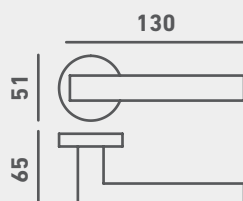
Levers with
concealed
screw-on rose

★ BEST ★
SELLER

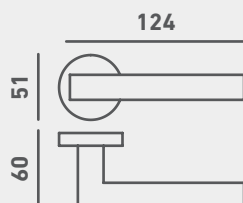




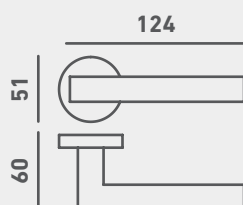
Trend
code: SZM160

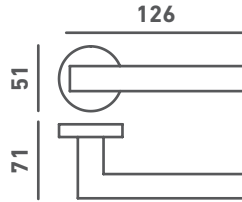
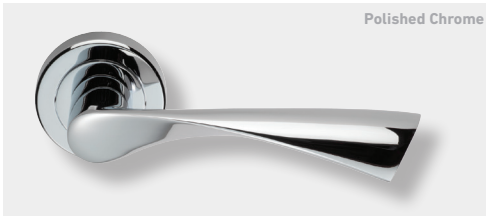


Noxia
code: ZIN3003



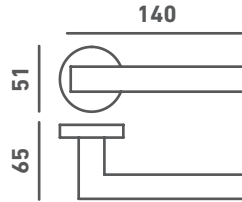
Philadelphia
code: ZIN3121





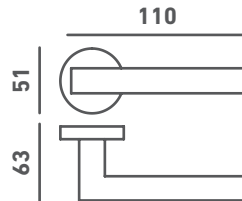
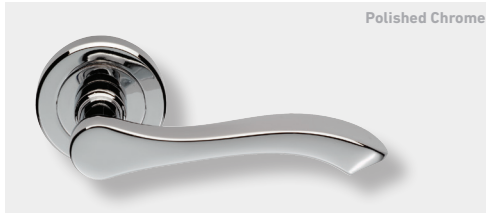
Breeze

code: SZM025
FD30/60 Timber



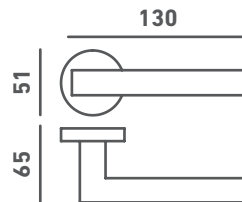
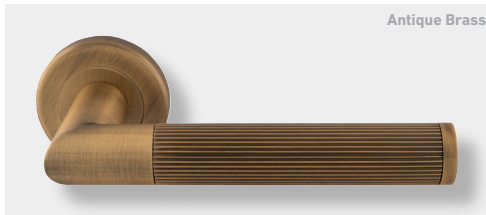
Azul

code: SZM110
FD30/60 Timber



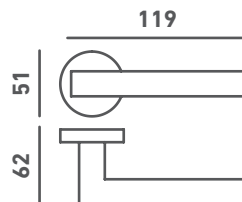
Style

code: SZM130
FD30/60 Timber



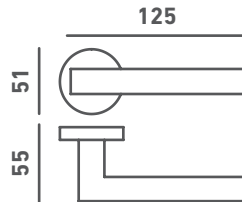
Trend Lines

code: SZM170
FD30/60 Timber



Edge

code: SZM210
FD30/60 Timber



Concept

code: SZM220
FD30/60 Timber

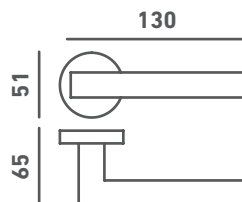


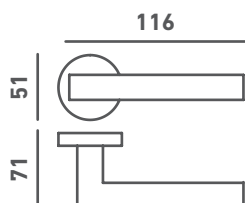
Image Lines

code: SZM270
FD30/60 Timber





Polished Chrome

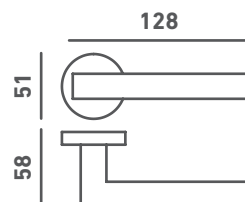


Design

code: SZM380
FD30/60 Timber



Polished Chrome

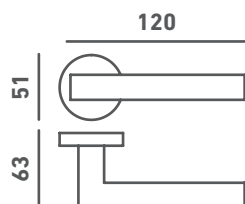


Nelson

code: ZIN3111
FD30/60 Timber

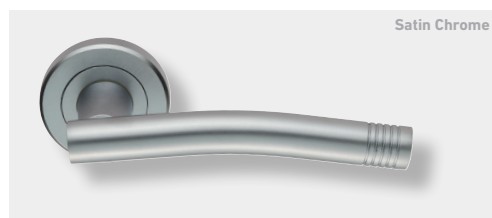


Matt Black

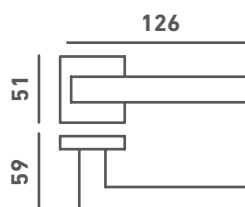


Olivier

code: ZIN3112
FD30/60 Timber

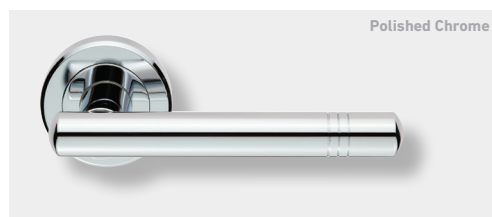


Satin Chrome

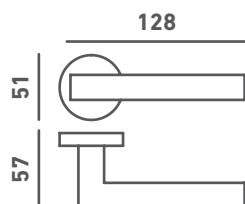


Carolina

code: ZIN3115
FD30/60 Timber



Polished Chrome

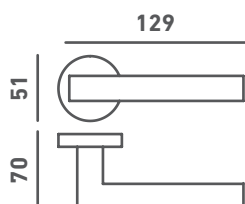


Atalaya

code: ZIN3116
FD30/60 Timber



Polished Chrome/Satin Chrome



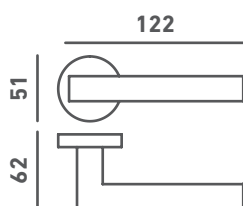
Cumulus

code: ZIN3129
FD30/60 Timber





Matt Black

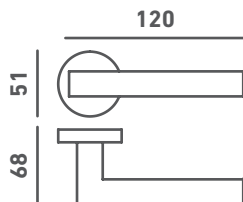


Verdun

code: ZIN3130
FD30/60 Timber

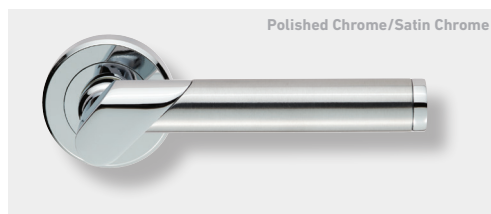


Satin Chrome

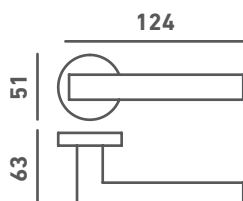


Shark

code: ZIN3131
FD30/60 Timber

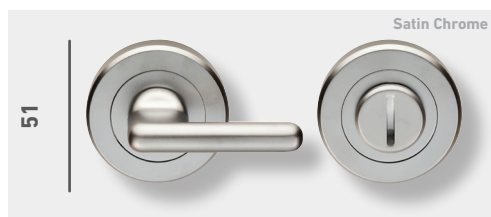


Polished Chrome/Satin Chrome



Irwin

code: ZIN3139
FD30/60 Timber

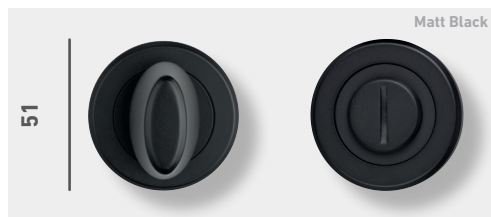


Satin Chrome

51

Thumbturn & Release

code: SZ5004
certification: BS 8300



Matt Black

51

Thumbturn & Release

code: SZM004



Polished Chrome

50

Blank

code: SZM000



Euro

code: SZM001

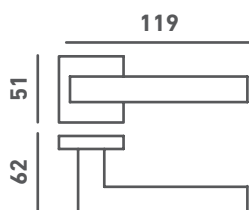


Lock

code: SZM003

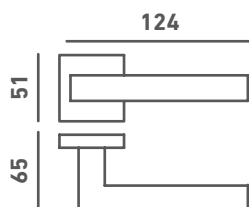


Escutcheons



Edge Square Rose

code: SZM210SQ
FD30/60 Timber



Equi

code: SZM370
FD30/60 Timber



51

Square Thumbturn & Release

code: SZM004SQ



51

Square Escutcheons



Euro

code: SZM001SQ

Lock

code: SZM003SQ



51

Rose Packs



Square

code: SZMRSQ

Unavailable in SC

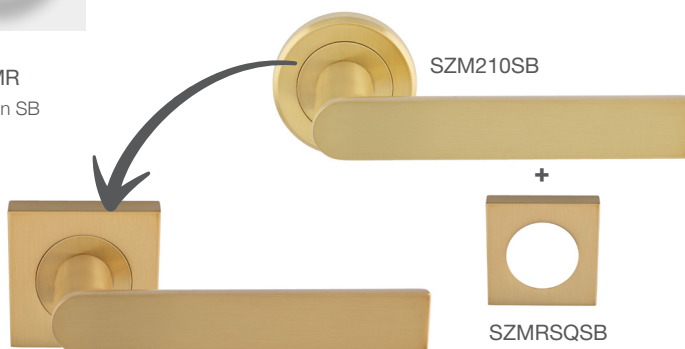
Round

code: SZMR

Unavailable in SB

Did you know?

Our square rose packs turn any round-rose levers to square-rose levers effortlessly... & vice versa!



Bold Burgundy



Colour Inspiration :





Finish | **Matt Black**

Lever on Rose: Olivier

code: ZIN3112MB

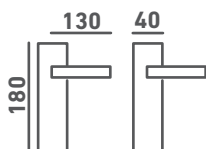
Thumbturn & Release

code: SZM004MB



Scope

FD30/60 Timber



Lock

code: SZM044
(Unavailable in CP)



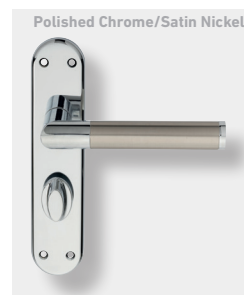
Euro

code: SZM044Y
(Unavailable in CPSN)



Latch

code: SZM045

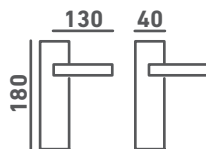


Bathroom

code: SZM046

Stratus

FD30/60 Timber



Lock

code: SZM241



Euro

code: SZM241Y



Latch

code: SZM242



Bathroom

code: SZM243







Polished Chrome
Satin Chrome

Levers with push-on rose





Uno
code: SZC010

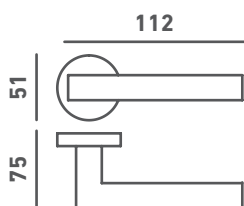


Tres
code: SZC030

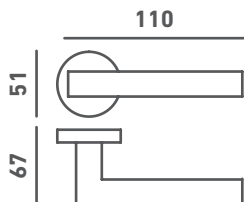


**Thumbturn
& Release**
code: SZC004

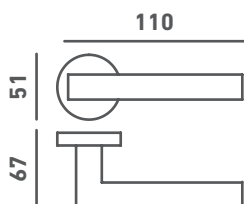




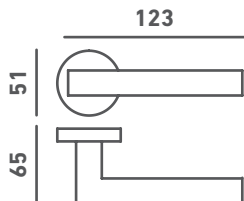
Dos
code: SZC020
FD30/60 Timber



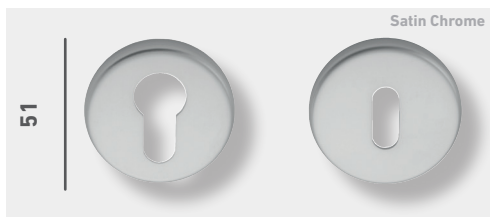
Cuatro
code: SZC040
FD30/60 Timber



Cinco
code: SZC050
FD30/60 Timber



Cuarenta
code: SZC340
FD30/60 Timber



Euro
code: SZC001

Lock
code: SZC003

Escutcheons

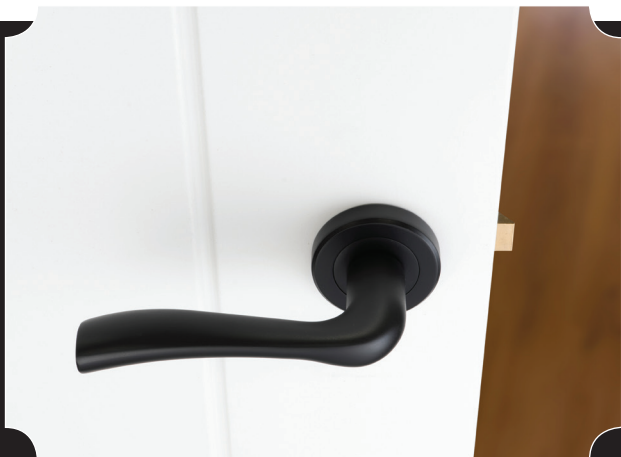




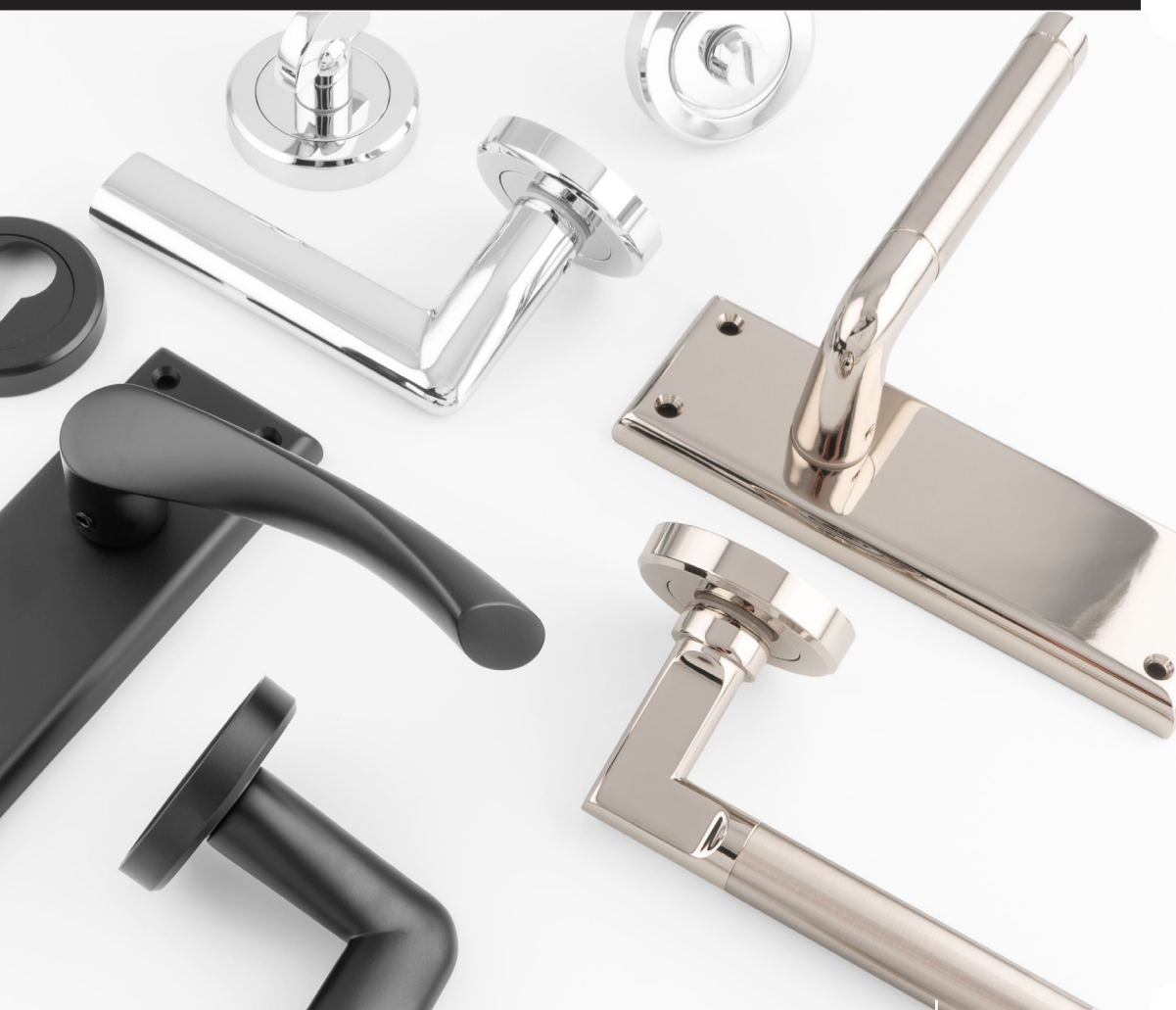
Polished Chrome



Matt Black



**Levers on oversized backplates,
designed to hide previous
mounting holes**



Levers with screw-on round rose

Polished Nickel / Satin Nickel

★ BEST ★
SELLER



Venti

code: SZR020



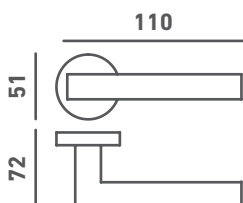
Cinquanta

code: SZR050





Matt Black

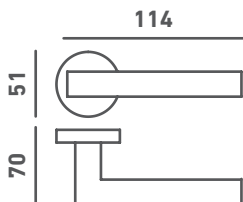


Dieci

code: SZR010
FD30/60 Timber

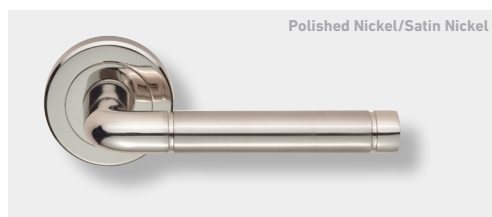


Matt Black

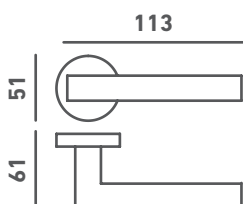


Trenta

code: SZR030
FD30/60 Timber

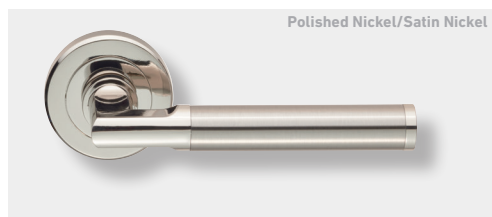


Polished Nickel/Satin Nickel

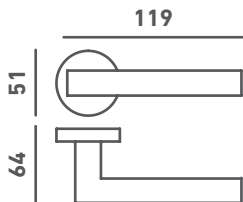


Quaranta

code: SZR040
FD30/60 Timber

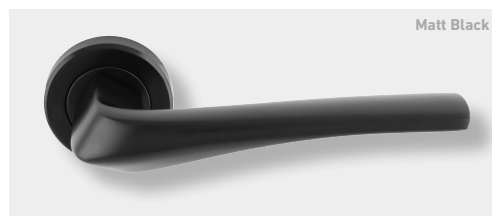


Polished Nickel/Satin Nickel

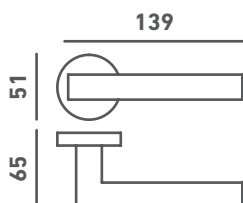


Sessanta

code: SZR060
FD30/60 Timber

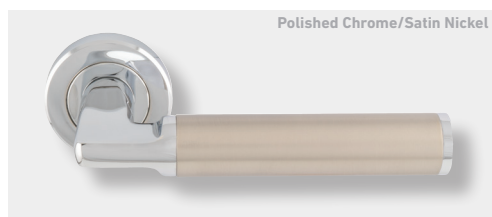


Matt Black

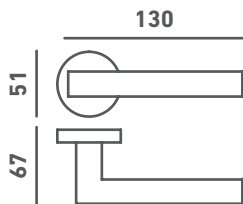


Pronta

code: SZR120



Polished Chrome/Satin Nickel



Cendio

code: SZR140





Euro

code: SZR001

Lock

code: SZR002

Escutcheons



code: SZR004

Thumbturn & Release



Lever on Round Rose: Cinquanta

code: SZR050CP

page: 056

Thumbturn & Release

code: SZR004CP

page: 058

Get inspired...

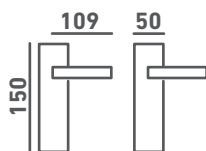
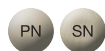


*Follow our
Instagram!*



Dieci

FD30/60 Timber



Lock

code: SZR011



Euro

code: SZR011Y



Latch

code: SZR012

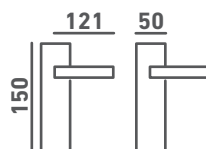


Bathroom

code: SZR013

Venti

FD30/60 Timber



Lock

code: SZR021



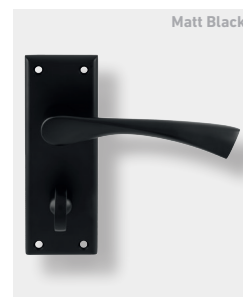
Euro

code: SZR021Y
(Unavailable in MB)



Latch

code: SZR022

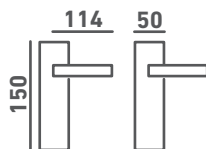


Bathroom

code: SZR023

Trenta

FD30/60 Timber



Lock

code: SZR031



Euro

code: SZR031Y



Latch

code: SZR032

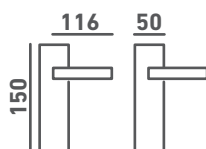


Bathroom

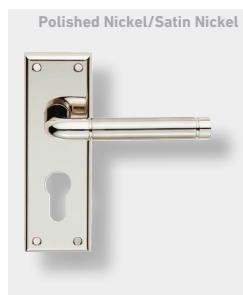
code: SZR033

Quaranta

FD30/60 Timber



Lock
code: SZR041



Euro
code: SZR041Y



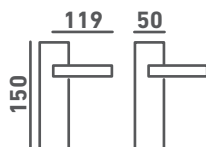
Latch
code: SZR042



Bathroom
code: SZR043

Cinquanta

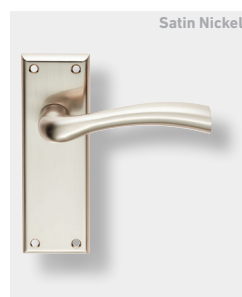
FD30/60 Timber



Lock
code: SZR051



Euro
code: SZR051Y



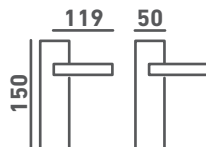
Latch
code: SZR052



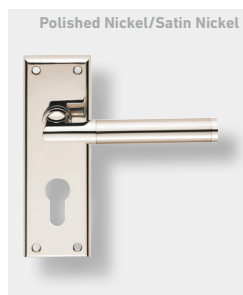
Bathroom
code: SZR053

Sessanta

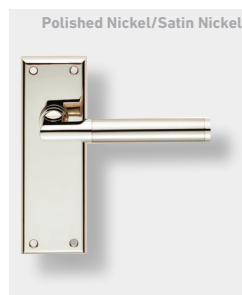
FD30/60 Timber



Lock
code: SZR061



Euro
code: SZR061Y



Latch
code: SZR062



Bathroom
code: SZR063

Olive Green

Finish | **Polished Nickel**

Lever on Backplate : Cinquanta

Latch

code: SZR052PN





Colour Inspiration :



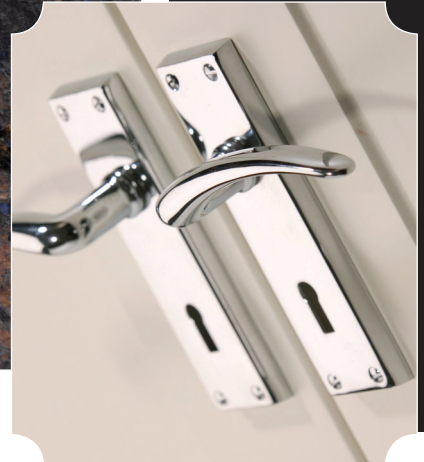
© CARLISLE BRASS



Perfectly suited to
period properties



Timeless brass levers crafted for elegance



Florentine Bronze

A beloved collection
that continues
to inspire



Polished Chrome
Polished Brass



Traditional Handles

★ BEST
SELLER



B12SC



DL56SC



DL56CP



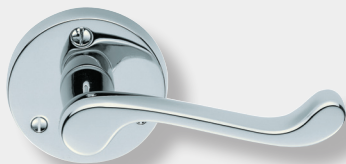
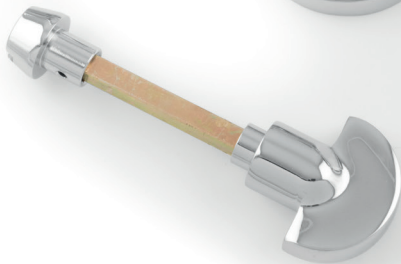
DL56



B12CP



B12



Victorian Scroll
code: DL56

CP

PB

SC

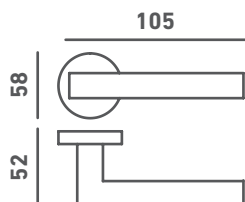


Thumbturn & Release
code: B12

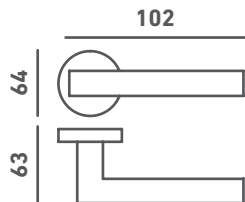
CP

PB

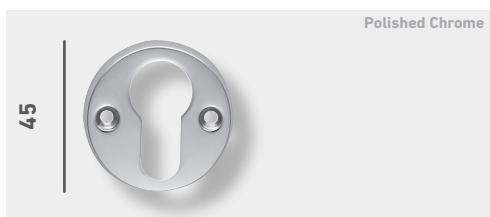
SC



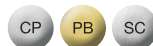
Victorian
code: M32
FD30/60 Timber



Georgian
code: FG3
FD30/60 Timber



Euro Escutcheons
code: AA145



Victorian Scroll

FD30/60 Timber



Lock
code: DL54PB



Lock
code: DL54CP

variations:

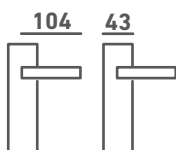
- DL54 Lock
- DL54WC Bathroom
- DL54Y Euro
- DL54S Sweedor latch (PB finish)
- DL55 Latch short plate
- DL55WC Privacy short plate

Sizes vary

Traditional Handles

Victorian Ascot

FD30/60 Timber



Lock

code: DL30



Short Latch

code: DL31



Bathroom

code: DL30WC

Victorian

FD30/60 Timber



Lock

code: M30



Bathroom

code: M30WC

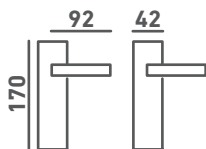
variations:

M30	Lock
M30U	Oval
M30Y	Euro
M30WC	Bathroom
M30S	Sweedor latch
M31	Short plate latch
M31WC	Short plate privacy

Sizes vary

Oakley

FD30/60 Timber



Lock

code: DL168



Euro

code: DL168Y



Latch

code: DL167



Bathroom

code: DL168WC

Ashtead

FD30/60 Timber



Lock
code: DL17



Latch
code: DL18

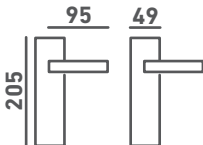
variations:

- DL16 Latch short plate
- DL17 Lock
- DL17Y Euro
- DL18 Latch
- DL18WC Bathroom

Sizes & finishes vary

Victorian Shaped Scroll

FD30/60 Timber



Lock
code: M68



Euro
code: M68Y



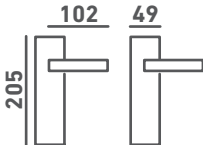
Latch
code: M67



Bathroom
code: M68WC

Georgian Shaped

FD30/60 Timber



Lock
code: FG27



Latch
code: FG26L



Bathroom
code: FG27WC

Traditional Handles

Andros

FD30/60 Timber



Lock

code: DL180



Latch

code: DL181

variations:

DL180	Lock
DL180Y	Euro
DL181	Latch
DL182	Bathroom
DL380	Long plate lock
DL380Y	Long plate Euro
DL381	Long plate latch
DL382	Long plate bathroom

Sizes & finishes vary

Madrid

FD30/60 Timber



Lock

code: DL190



Latch

code: DL191

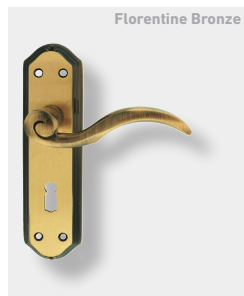
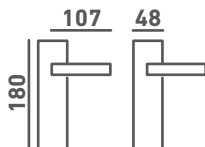
variations:

DL190	Lock
DL191	Latch
DL192	Bathroom
DL290	Long plate lock
DL291	Long plate latch
DL292	Long plate bathroom

Sizes & finishes vary

Wentworth

FD30/60 Timber



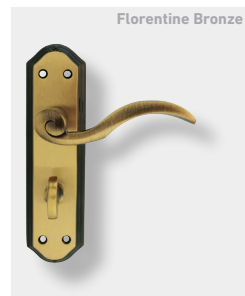
Lock

code: DL340



Latch

code: DL341

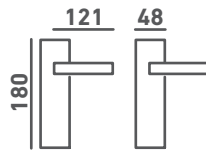


Bathroom

code: DL342

Lytham

FD30/60 Timber



Lock
code: DL450



Latch
code: DL451



Bathroom
code: DL452

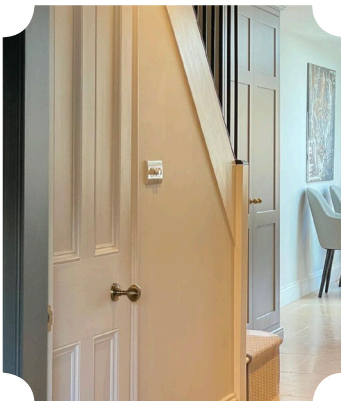


© CARLISLE BRASS

Timeless designs that add a classic finishing touch



SCAN ME



@kivistjoinery

**Traditional and period mortice knobs, perfect
for both modern and classic settings**



**Crafted from
premium
traditional
materials, solid
brass and
porcelain**

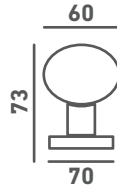


Mortice Knobs



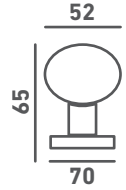
Porcelain Knob

Face fix: Unsprung
code: DK34ICFB
FD30/60 Timber



Plain Knob

Concealed fix: Unsprung
code: DK35C
FD30/60 Timber



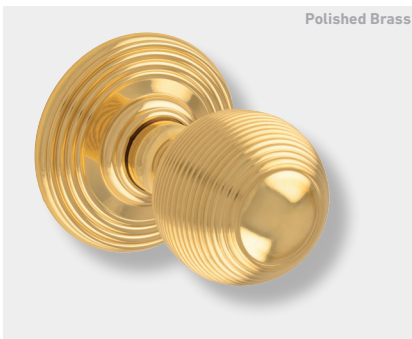
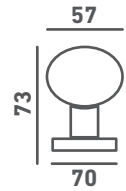
Ringed Knob

Concealed fix: Unsprung
code: DK39C
FD30/60 Timber



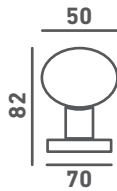
Flower Knob

Concealed fix: Unsprung
code: DK36CFB
FD30/60 Timber



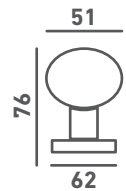
Reeded Knob

Concealed fix: Unsprung
code: DK37C
FD30/60 Timber



Queen Anne Mortice Knob

Unsprung
code: M1001
FD30/60 Timber





Oval Mortice Knob

Half-sprung

code: M34

FD30/60 Timber

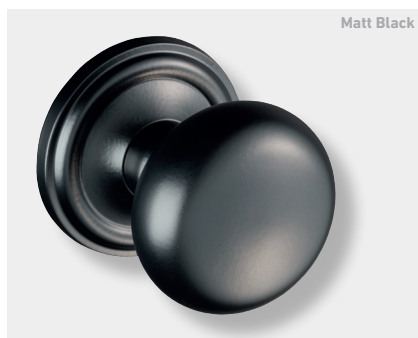
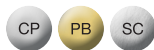


Ball Mortice Knob

Solid half-sprung

code: M48

FD30/60 Timber

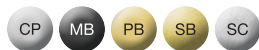


Mushroom Mortice Knob

Concealed fix: Unsprung

code: M35C

FD30/60 Timber



Mushroom Mortice Knob

Unsprung

code: M35US

FD30/60 Timber



Oval Mortice Knob

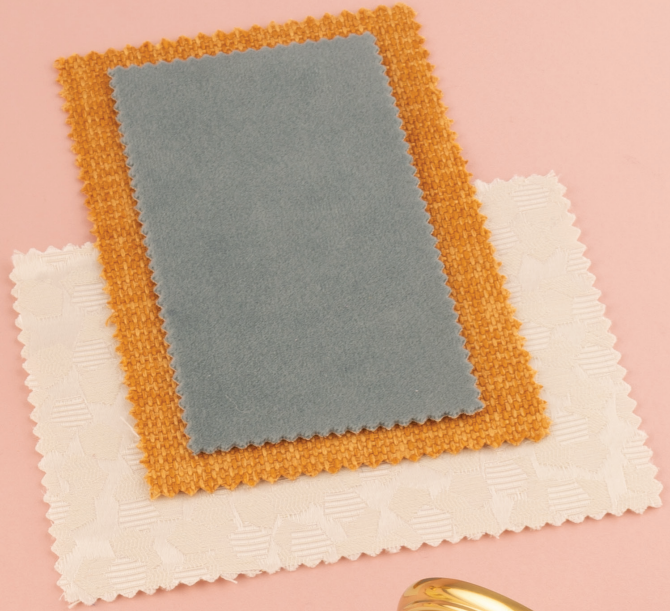
Unsprung

code: MK001

FD30/60 Timber



Joyful Yellow



Lick

Lick



Colour Inspiration :





Finish | **Polished Brass**

Reeded Knob

code: DK37C

Mortice Knobs

★ BEST ★
SELLER

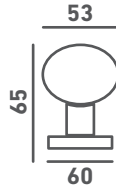


Victorian Mushroom Mortice Knob

Solid half-sprung
code: M35





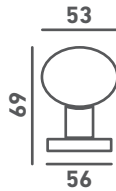


Georgian Mortice Knob

Half-sprung

code: FG4

FD30/60 Timber

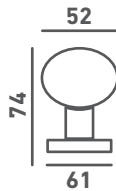
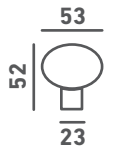


Small Mushroom Rim Knob

Unsprung

code: M35RS

FD30/60 Timber

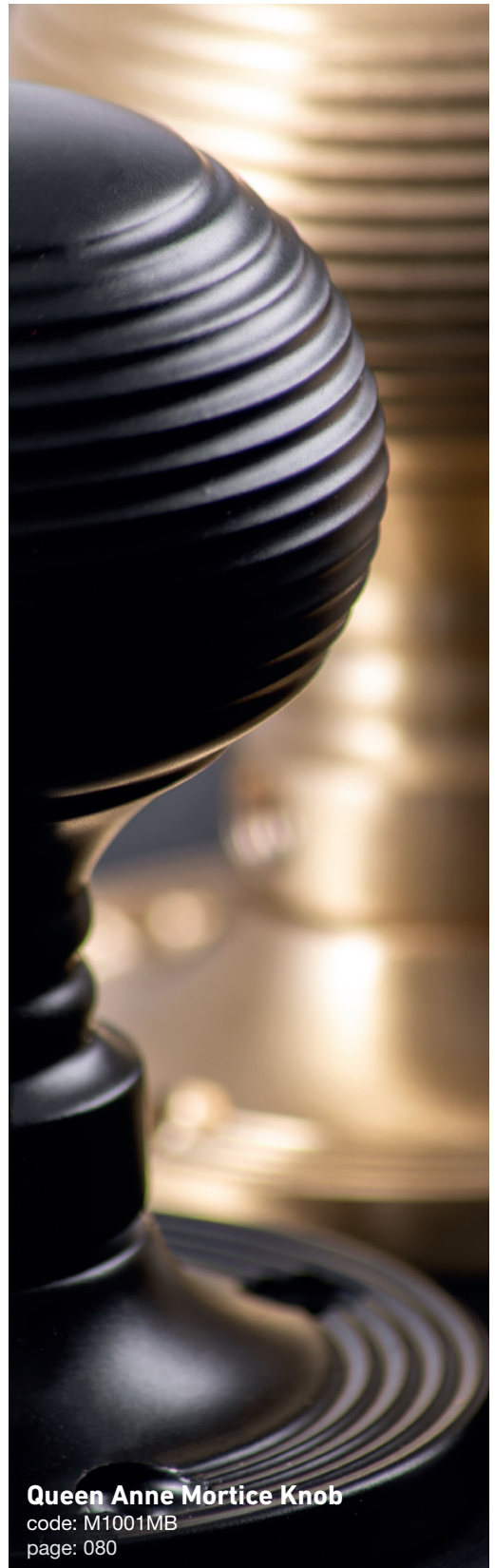
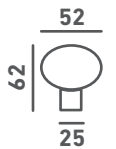


Queen Anne Rim Mortice Knob

Unsprung

code: M1001R

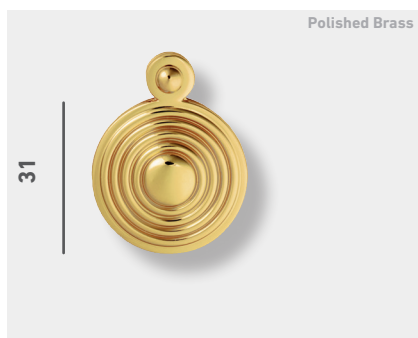
FD30/60 Timber



Queen Anne Mortice Knob

code: M1001MB

page: 080



Queen Anne Covered Escutcheon

code: M1000



Escutcheons

Euro

code: DK1



Lock

code: AQ41

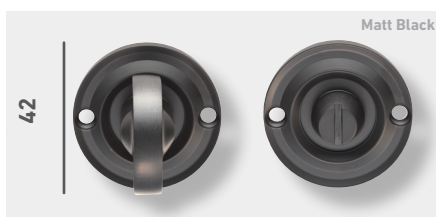
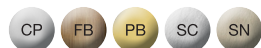


Euro

code: AA145



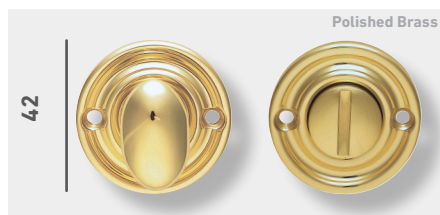
code: DK12



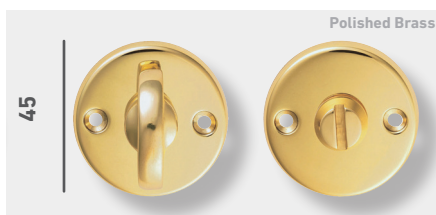
code: DK13



Thumbturn & Release



code: AQ133



code: B12



Thumbturn & Release

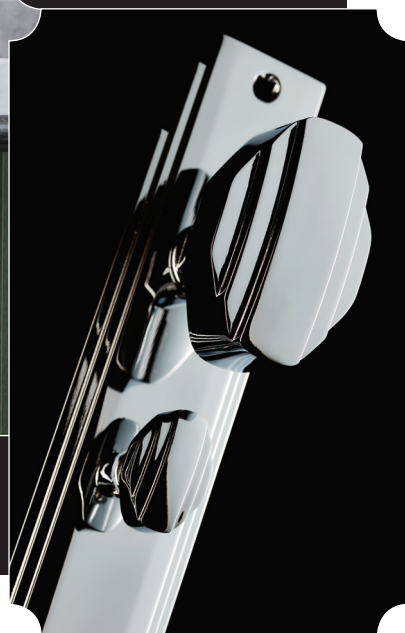
© CARLISLE BRASS

Original Carlisle Brass
design inspired by 1920s
New York architecture



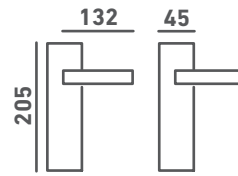
Suite your project
with our Art Deco
cabinet hardware
range





Art Deco Lever on Backplates

FD30/60 Timber



Matt Black

Lock

code: ADR011



Satin Nickel

Euro

code: ADR011Y
(not available in mb)



Polished Chrome

Latch

code: ADR012



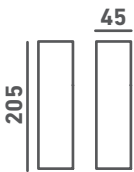
Matt Black

Bathroom

code: ADR013

Art Deco Knob on Backplates

FD30/60 Timber
Unsprung



Lock
code: ADR021

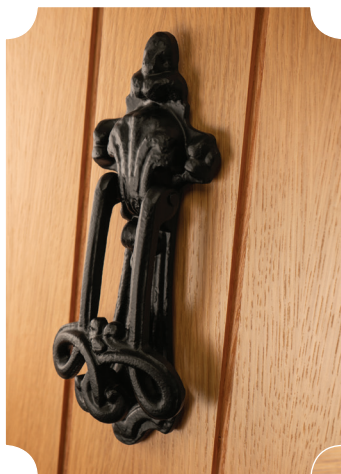


Latch
code: ADR022



Bathroom
code: ADR023

© CARLISLE BRASS



SCAN ME



Ideal for cottages and barn conversions



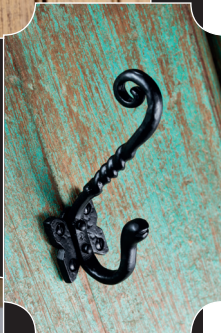
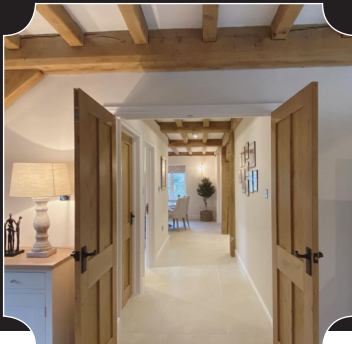
Perfect for creating an authentic country look and feel



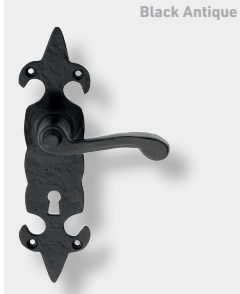
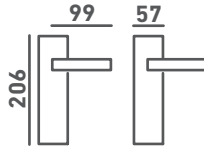
Period crafted furniture



@oakhomeinteriors



Fleur De Lys



Lock
code: LF5504

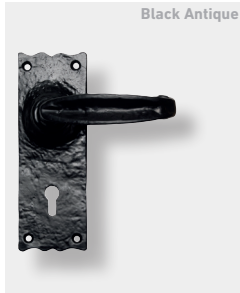
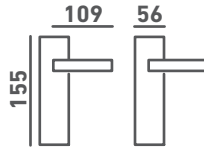


Latch
code: LF5505



Bathroom
code: LF5506

Traditional V



Lock
code: LF5516

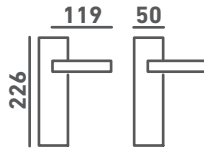


Latch
code: LF5517



Bathroom
code: LF5518

Barley Twist on Gothic Backplates



Lock
code: LF5113



Latch
code: LF5114



Bathroom
code: LF5115

★ **BEST** ★
SELLER



Traditional Backplates

- LF5501 Lock
- LF5501Y Euro
- LF5502 Latch
- LF5503 Bathroom



BA



Slimline V

- LF5507 Lock
- LF5507Y Euro
- LF5508 Latch
- LF5509 Bathroom

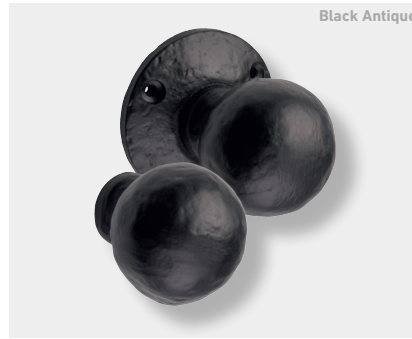


BA



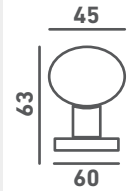
Ball Mortice Knob

Half-Sprung
code: LF5594



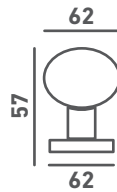
Ball Rim Knob

Unsprung
code: LF5594R



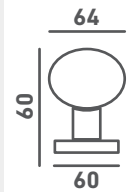
Octagonal Center Door Knob

code: LF5550



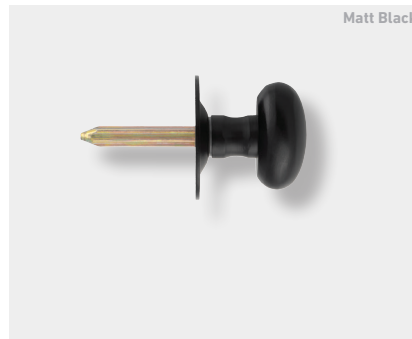
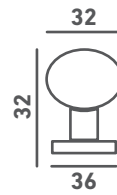
Oval Mortice Knob

Half-Sprung
code: LF5595



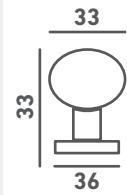
Oval Thumbturn & Release

code: AA133BA



Oval Thumbturn

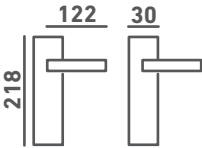
Spline spindle to operate rack bolt
code: AA33MB





Straight Narrow Backplate Euro

code: LF56NP92



Escutcheons

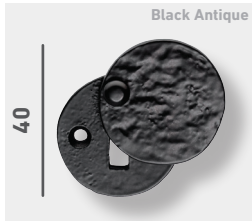


Lock
code: LF5539U

Euro
code: LF5539

**Lock
Fleur De Lys**
code: LF5532

**Lock
Floral**
code: LF5531



**Lock Cover
Escutcheon**
code: LF5546



**Lock Shield
Covered Escutcheon**
code: LF5533



**Lock Plaque
Covered Escutcheon**
code: LF5538

Escutcheons



© CARLISLE BRASS



SCAN ME



@monochrome_reno

Elevate every property entrance



@anne_getty



@rows_and_renovations



@insidenumber5



Classic creations
for every style



Narrow Plate Handles



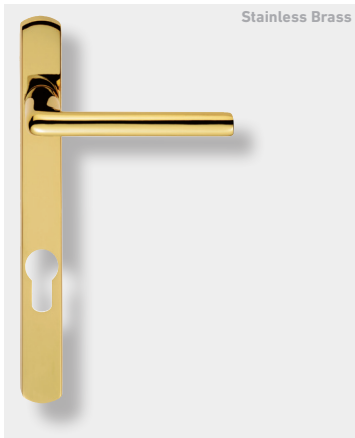
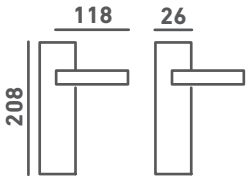
Straight Narrow

codes: M86NP92

M86NP (70mm centres)

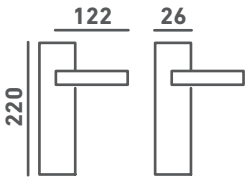


Special Order: applies to various finishes



Rosa Narrow

code: SZS01NP92





Astro Narrow

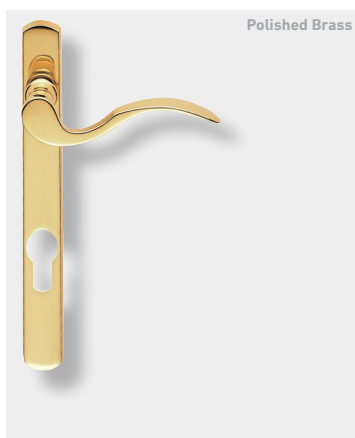
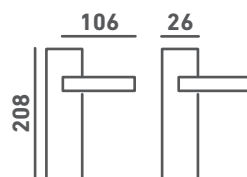
code: AQ1NP (70mm centres)



code: AQ1NP92 (92mm centres)



Special Order: applies to various finishes



Scroll Lever on Narrow Plate

codes: M140NP92RH (92mm centres) (right hand)
M140NP92LH (92mm centres) (left hand)

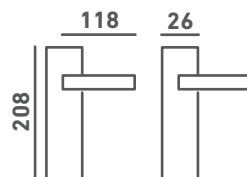


Special Order: applies to various finishes

codes: M140NPRH (70mm centres) (right hand)
M140NPLH (70mm centres) (left hand)

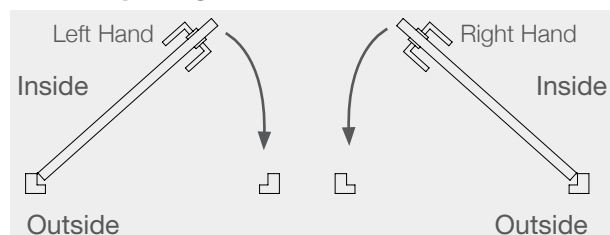


Special Order

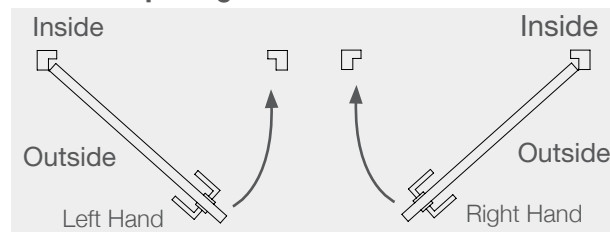


How to determine the handing of a door:

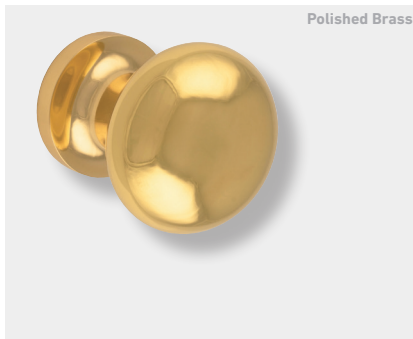
Inward opening door



Outward opening door: Reverse door

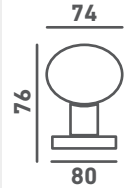


Centre Door Knobs



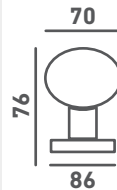
Easy Centre Door Knob

code: M220



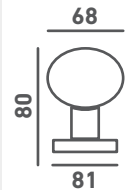
Centre Door Knob

code: DL219



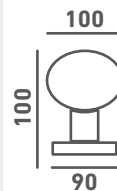
Centre Door Knob

code: M51



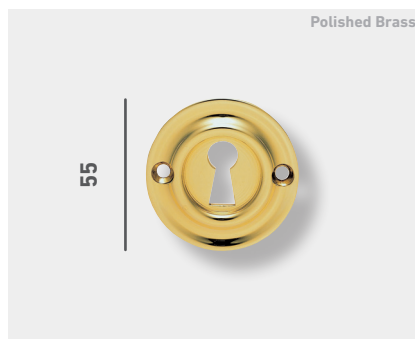
Round Centre Door Knob

code: M60



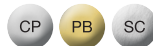
Large Centre Door Knob

code: AC055



Lock Escutcheon

code: AQ41





M219PVD



M61SC



M61



M219CP



M61CP



Octagonal Centre Door Knob
code: M219



Round Centre Door Knob
code: M61



Care and Maintenance

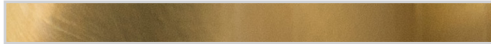
Metals and Finishes

Keeping metal clean is important. Dust and moisture can damage it over time. Regular, simple cleaning works better than occasional deep cleaning.



Black Antique

Wipe the surface with a soft cloth and a little oil, then buff it dry.



Brass (Unlacquered)

Brass, an alloy of copper and zinc, naturally develops a protective patina over time. This patina, often green, helps guard against further corrosion. Clean gently with soapy water and dry thoroughly to preserve it. For a bright finish, occasionally polish with Brasso.



Lacquered Finishes

Dust regularly. Occasionally wash with soapy water, dry completely, and lightly buff to remove water marks.



Plated Finishes

Dust regularly. Occasionally clean with soapy water, dry thoroughly, and lightly buff to remove water marks.



Stainless Steel

Dust regularly. Occasionally wash with soapy water, dry well, and lightly buff. For outdoor use, use GT85 PTFE (or similar) spray on a cloth to clean dirt or discoloration.



PVD

Regular dusting is required. Occasional light wash with soapy water, dry thoroughly and buff lightly to remove any water marks.

Guarantees



**10 Year
Mechanical
Guarantee**

10 Year Mechanical Guarantee

Applies to all products (unless otherwise stated).



**25 Year
Mechanical
Guarantee**



**25 Year
Finish
Guarantee**

25 Year Finish Guarantee

Applies to all products with a PVD Finish.
























BS EN 1634 European Fire Safety Standard entitled "Fire resistance and smoke tests for door and shutter assemblies, openable windows and elements of building hardware. Part 1: Fire resistance test for door and shutter assemblies and openable windows." Fire evidence for individual items for door hardware means they are suitable for consideration for use on a fire door, it does not mean that the product can be fitted to every fire door. Any evidence gained must show that the hardware did not affect the integrity of the fire door-set in which it was tested with.







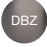






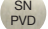
FD30/60 TIMBER

30/60 minute fire doors

Key to Finishes

 AB AB Antique Brass	 PB PB Polished Brass
 ANT ANT Anthracite	 PN PN Polished Nickel
 BA BA Black Antique	 PNSN PNSN Polished Nickel/Satin Nickel
 BL BL Black	 PVD PVD Stainless Brass
 BLK BLK Black	 SB SB Satin Brass
 BN BN Black Nickel	 SB/PB SBPB Satin Brass/Polished Brass
 CP CP Polished Chrome	 SC SC Satin Chrome
 CPSC CPSC Polished Chrome/Satin Chrome	 SCCP SCCP Satin Chrome/Polished Chrome
 CPSN CPSN Polished Chrome/Satin Nickel	 SN SN Satin Nickel
 DB DB Dark Bronze	
 FB FB Florentine Bronze	
 ICFB ICFB Ivory Crackle Glaze/Florentine Bronze	
 MB MB Matt Black	
 MBRZ MBRZ Matt Bronze	

Alexander & Wilks

 AB AB Antique Brass	 PN PN Polished Nickel
 BL BL Black	 PNPVD PNPVD Polished Nickel PVD
 DBZ DBZ Dark Bronze	 SB SB Satin Brass
 DBZ PVD DBZPVD Dark Bronze PVD	 SB PVD SBPVD Satin Brass PVD
 IB IB Italian Brass	 SN SN Satin Nickel
 PC PC Polished Chrome	 SN PVD SNPVD Satin Nickel PVD

* AB (Antique Brass) disclaimer: Please note, the product you have selected has an applied finish and although we strive for consistency, the appearance may vary from batch to batch.

Index

A

AA0	27
AA12	27
AA12	27
AA133BA	90
AA145	67
AA145	81
AA3	27
AA33MB	90
AAQ11	27
AC055	96
ADR011	84
ADR011Y	84
ADR012	84
ADR013	84
ADR021	85
ADR022	85
ADR023	85
AQ1	27
AQ12	27
AQ133	81
AQ1NP	95
AQ1NP92	95
AQ2	27
AQ3	26
AQ4	26
AQ41	81
AQ41	96
ARTSY40	20
AW200	6
AW201	6
AW202	7
AW210	6
AW220	6
AW222	7
AW223	8
AW224	10
AW225	10
AW226	10
AW240	14
AW250	14
AW390	7
AW390	8
AW390	10
AW390	14
AW391	7
AW391	8
AW391	10
AW391	14
AW790	6
AW791	6

AW791	10
AW791	14
AW791	14
AW792	7
AW793	8
AW794	10

B

B12	66
B12	81

D

DK1	81
DK12	81
DK13	81
DK34ICFB	74
DK35C	74
DK36CFB	74
DK37C	74
DK39C	74
DL167	68
DL168	68
DL168WC	68
DL168Y	68
DL17	69
DL18	69
DL180	70
DL181	70
DL190	70
DL191	70
DL219	96
DL30	68
DL30WC	68
DL31	68
DL340	70
DL341	70
DL342	70
DL450	71
DL451	71
DL452	71
DL54	67
DL54CP	67
DL56	66
DU5	30

E

EL11	22
EL11Y	22
EL12	22
EL13	22
EL21	22
EL21Y	22
EL22	22
EL23	22

EL31	22
EL31Y	22
EL32	22
EL33	22
EUL001	20
EUL001	24
EUL001	31
EUL001	36
EUL002	20
EUL002	24
EUL002	31
EUL002	36
EUL004	24
EUL004	31
EUL004	36
EUL010	34
EUL020	34
EUL030	34
EUL040	36
EUL050	35
EUL060	36
EUL070	36

F

FG26L	69
FG27	69
FG27WC	69
FG3	67
FG4	80
FH5	31

H

HN5	24
HQ5	24
HR5	24
HYD5	30

I

IN5	30
-----	----

L

LF5113	88
LF5114	88
LF5115	88
LF5501	89
LF5501Y	89
LF5502	89
LF5503	89
LF5504	88
LF5505	88
LF5506	88
LF5507	89
LF5507Y	89
LF5508	89
LF5509	89

LF5516	88
LF5517	88
LF5518	88
LF5531	91
LF5532	91
LF5533	91
LF5538	91
LF5539	91
LF5539U	91
LF5546	91
LF5550	90
LF5594	90
LF5594R	90
LF5595	90
LF56NP92	91

M

M1000	81
M1001	74
M1001R	80
M140NP92LH	95
M140NP92RH	95
M140NPLH	95
M140NPRH	95
M219	97
M220	96
M30	68
M30WC	68
M32	67
M34	75
M35	78
M35C	75
M35RS	80
M35US	75
M48	75
M51	96
M60	96
M61	97
M67	69
M68	69
M68WC	69
M68Y	69
M86NP	94
M86NP92	94
MK001	75
MS5	30

Q

QE001	31
QE003	31
QT004	31

R

RE001	28
-------	----

Index

RE004	28
S	
SC5	28
SGI5	27
SX5	20
SZ5004	44
SZC001	53
SZC003	53
SZC004	52
SZC010	52
SZC020	53
SZC030	52
SZC040	53
SZC050	53
SZC340	53
SZM000	44
SZM001	44
SZM001SQ	45
SZM003	44
SZM003SQ	45
SZM004	44
SZM004SQ	45
SZM025	42
SZM044	48
SZM044Y	48
SZM045	48
SZM046	48
SZM110	42
SZM1170	42
SZM130	42
SZM160	41
SZM210	42
SZM210SQ	45
SZM241	48
SZM241Y	48
SZM242	48
SZM243	48
SZM270	42
SZM370	45
SZM380	43
SZMRSQ	45
SZMRSQ	45
SZR001	58
SZR002	58
SZR004	58
SZR010	57
SZR011	60
SZR011Y	60
SZR012	60
SZR013	60
SZR020	56

SZR021	60
SZR021Y	60
SZR022	60
SZR023	60
SZR030	57
SZR031	60
SZR031Y	60
SZR032	60
SZR033	60
SZR040	57
SZR041	61
SZR041Y	61
SZR042	61
SZR043	61
SZR050	56
SZR051	61
SZR051Y	61
SZR052	61
SZR053	61
SZR060	57
SZR061	61
SZR061Y	61
SZR062	61
SZR063	61
SZR120	57
SZR140	57
SZS01NP92	94
T	
TC5	31
V	
VX5	30
Z	
ZIN3003	41
ZIN3111	43
ZIN3112	43
ZIN3115	43
ZIN3116	43
ZIN3121	41
ZIN3129	43
ZIN3130	44
ZIN3131	44
ZIN3139	44



M43CP

**View all front
door furniture
on our website!**



SCAN ME



RCN8340PC



AC055CP

The paper used to create this catalogue is both FSC[®] certified and Carbon Balanced (WLT - World Land Trust accredited). Sterling are an ISO 14001 accredited company who use 100% vegetable based inks.



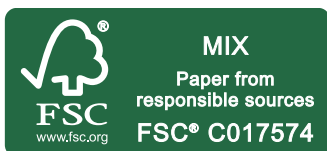
Re-using heat generated by the presses to heat the factory during winter



Reduction of chemicals and water used on all presses



Solar panels on the factory roof that save electricity and regenerate power



sterling[®]



**WORLD
LAND
TRUST[™]**

DISCLAIMER - At the time of publication all information was correct. We reserve the right to make technical changes.
- All sizes are in millimetres unless otherwise specified.