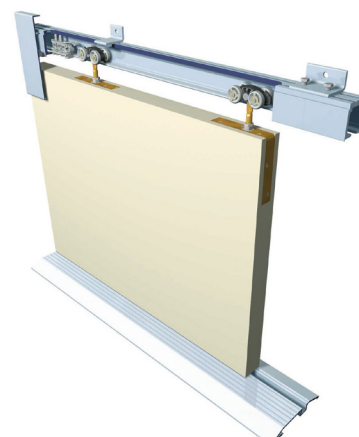


# PACER SLIDING

For wooden and metal sliding doors weighing up to 200kg



Combining performance and style, Pacer Sliding is suitable for wooden, aluminium or metal doors weighing up to 200kg. The system is ideally suited to modern applications including offices, shop fronts and other stylish interiors. Various guide channels are available including brass, aluminium and an aluminium threshold. A track mounted aluminium fascia is also available for face fixed and soffit fixed applications to conceal the working components. Wooden doors may be either solid or glazed and metal doors can be angle or box section.



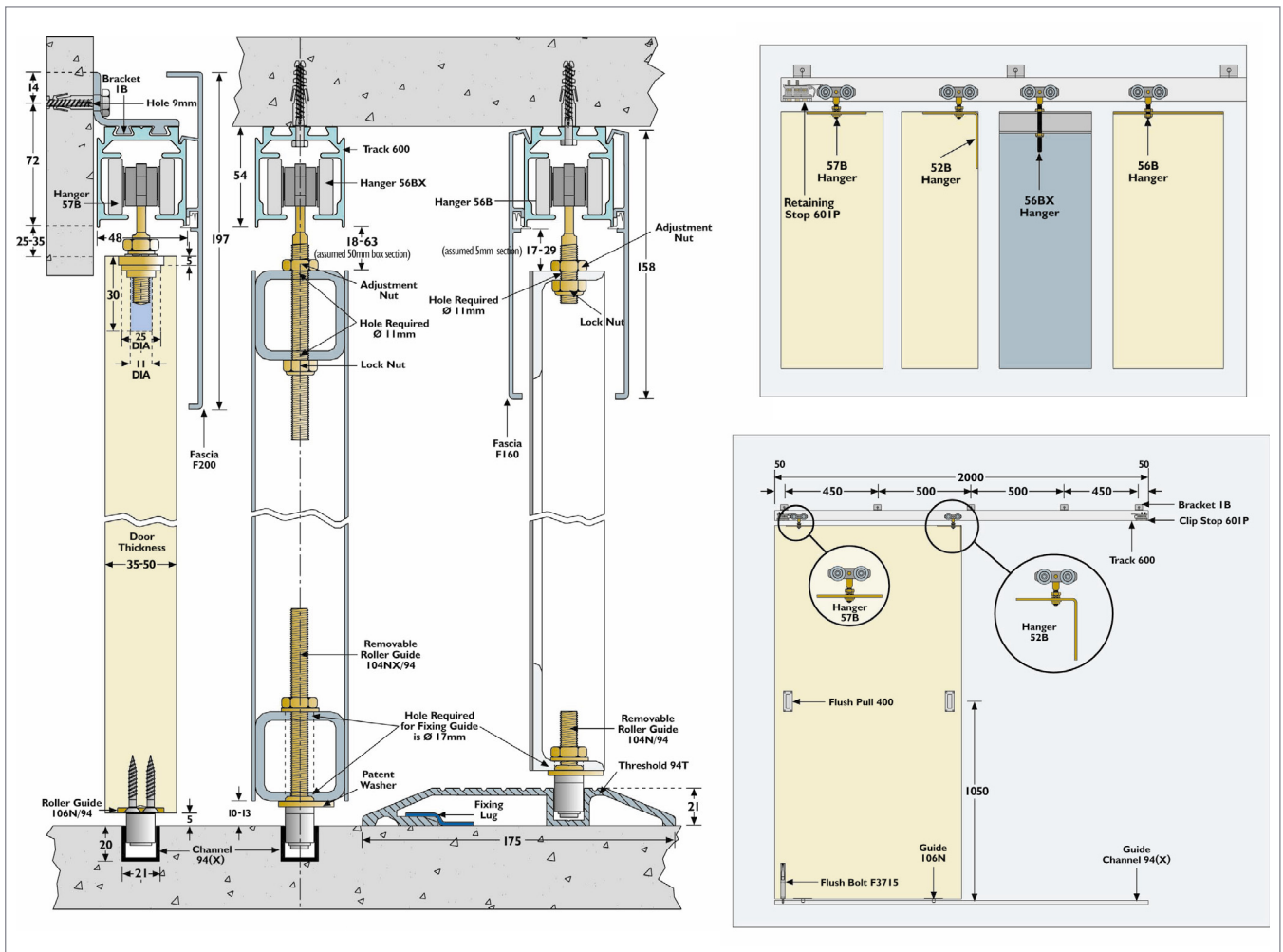
## Product Information

Product	Door Thickness Range	Max. Door Weight
Pacer Sliding	35 – 46mm	200kg

## Product Specification

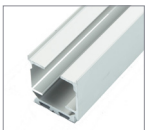
Component	Description	Short Code
Track	Aluminium mill finish track in 2000, 2500, 3000, 3500, 4000, 5000 & 6000mm	600/****
	Anodised aluminium track in 2000, 2500, 3000, 3500, 4000, 5000 & 6000mm	600/****AN
Brackets	Face fixed bracket	1B
	Jointing bracket	1BX
Hangers	Angle plate fixing hanger for wooden doors	52B
	Hanger for angle frame metal doors	56B
	Hanger for box frame metal doors	56BX
	Concealed fixing hanger for wooden doors, aluminium doors or metal doors	57B
Guides	Floor mounted guide for wooden, aluminium or metal doors	89/2N
	Concealed fixing guide for wooden or aluminium doors	106N/94
	Guide for angle frame metal doors	104N/94
	Guide for box frame metal doors	104NX/94
Guide Channel	Brass guide channel available in 1500 and 3000mm lengths	94/****
	Aluminium guide channel in 1500, 2000, 2500, 3000, 4000 and 6000mm lengths	94X/****
	Aluminium threshold in 2000, 2500, 3000, 3500, 4000 and 6000mm lengths	94T/****
	Polypropylene channel in black in 2000, 2500, 3000, 3500, 4000, 5000 and 6000mm lengths	94P/****
Stop	Retaining stop mounted within track	601P
Fascia	Aluminium fascia for soffit fixed track in 2000, 2500, 3000, 4000 and 6100mm	F160/****
	Aluminium fascia for face fixed track in 2000, 2500, 3000, 3500, 4000 and 6100mm	F200/****
Fascia End Caps	End cap for F160 fascia	F160/ECP
	End cap for F200 fascia	F200/ECP

\*\*\*\* Replace by length of track for full short code

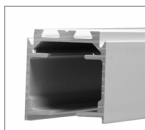


## Hardware

### Track



600



600AN

### Brackets



1B



1BX

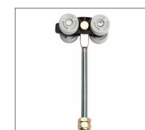
### Hangers



52B



56B



56BX



57B

### Guides



89/2N



106N/94



104N/94



104NX/94

### Guide Channel



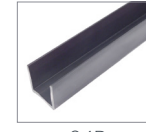
94



94X



94T



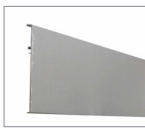
94P

### Stop



601P

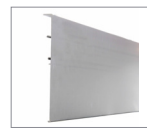
### Fascia



F160



F160/ECP



F200



F200/ECP

## Accessories



Round  
Flush Pull  
Set (385/S)  
satin, other  
finishes also  
available



Square  
Flush Pull  
Set (53/S)  
satin, also  
available in  
chrome and  
black



Oval  
Flush Pull  
Set (144S)  
satin, also  
available in  
black



Rectangle  
Flush Pull  
Set (125/S)  
satin,  
also available  
in chrome

**View our  
full range of  
accessories  
on page 136**