



Panic Bar

A panic bar, also referred to as an exit device or crash bar, is a crucial component of door hardware designed for emergency exits. It consists of a horizontal bar or push pad installed on the interior side of a door, connected to a mechanism that unlatches the door when pushed. In an emergency situation, individuals can exert even a light pressure on the panic bar, triggering the mechanism to release the door, allowing for quick and easy egress. Panic bars are engineered to ensure fast and reliable evacuation, enhancing safety in buildings and public spaces.

Panic Exit Device Feature & Benefits

Panic Exit Devices

Key features:

- Surface mounted
- Slim, neat design, surface mounted
- 200,000 cycles tested
- Fire rated
- Wide range of option

Benefits:

- Ease of installation
- Superior aesthetics
- High durability
- Suitable for fire rated doors
- External cylinder and lever option available

Standard & Certification

BS EN 1125
En1634

Technical details:

- Cross and Push bar
- Modular type – stock reduction
- 1, 2, 3 locking point versions (vertical and lateral) – RIM
- For doors up to 1200 x 2400mm in standard
- Easy installation and adjustment
- Wide range of finishes
- Compatible accessories
- Wide range of outside trims
- Hold Open and Micro switch versions
- Glass door kit
- Certified according to EN 1125:2008
- Durability of 2,00,000 cycles
- For Fire Rated applications (not HO version)
- Suitable for single and double doors

This new range of product is bases on a new modular concept and a common design, under a unique platform for both push and cross bar panic exit devices.



Panic Exit Device

Panic Exit Devices Standard Finishes

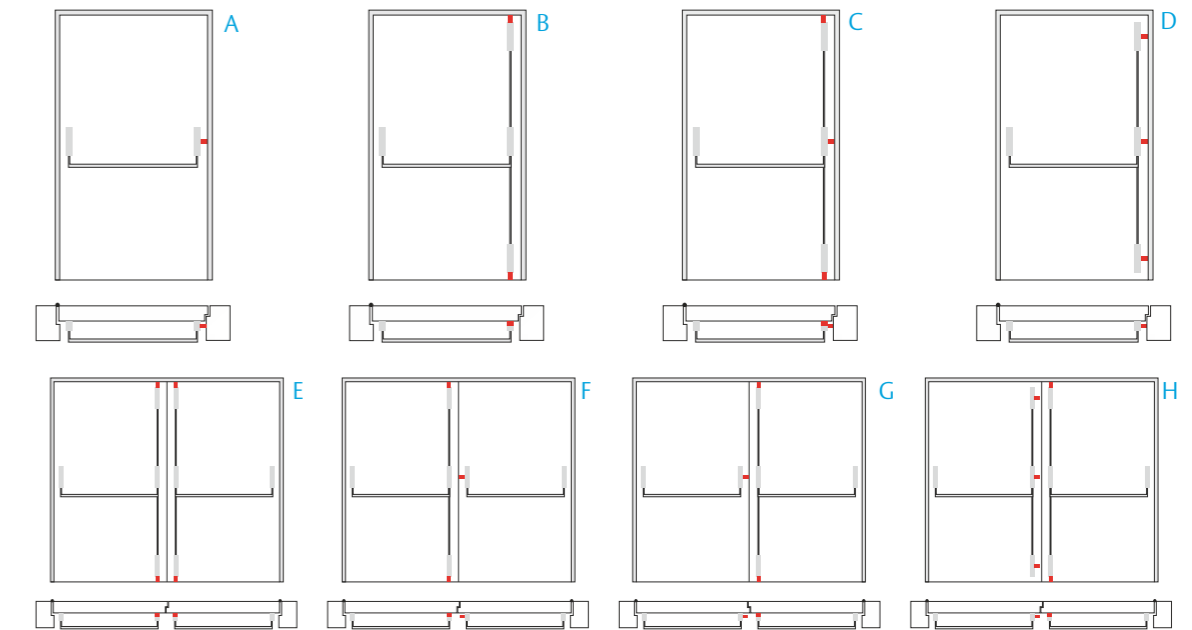
Cross bar:

Cover & Fix bar		Tube		
		Red (RAL 3000)	Silver (RAL 9006)	S/Steel
		R	G	I
Black (RAL 9005)	N	NR		
Silver (RAL 9006)	G		GG	
S/Steel effect	S			SI
S/Steel	I			II

Push bar:

Cover & Fix bar		Tube		
		Red (RAL 3000)	Silver (RAL 9006)	S/Steel
		R	G	I
Black (RAL 9005)	N	NR		
Silver (RAL 9006)	G		GG	
S/Steel effect	S			SI

Typical door installation



Panic Exit Device PED 300 Touch bar

Panic Exit Device Touch Bar - Rim Device

Model no.: PED 300

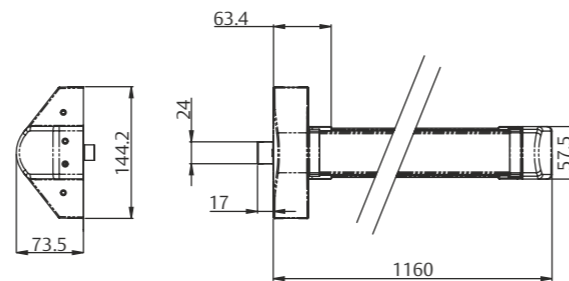
- Panic exit device with central locking point - RIM



Panic Exit Device Characteristics

PED 300:

- Modular push bar type
- For fire and smoke applications
- High durability 2,00,000 cycles
- One central locking point
- For one or double leaf door up to 200 kg
- For all types of door
- For doors up to 1200 mm width in standard
- For doors up to 1400 mm width in option
- Steel pullman latch in standard
- Dead latch in standard
- Steel or zinc alloy swing latch
- Zinc alloy cover 38 mm width
- Aluminium touch bar 1046 mm long
- Bar to be cut
- 73 mm projection
- HO function in option
- Micro switch version in option



All dimensions are in mm

Panic Exit Device PED 300 Touch bar

Panic Exit Device Touch Bar - Vertical device Vertical Locking point

Model no.: PED 300+PED/GV

- Set of 2/3 locking points PED composed of Modular Push Bar and kit for 2 vertical locking point



Panic Exit Device Characteristics

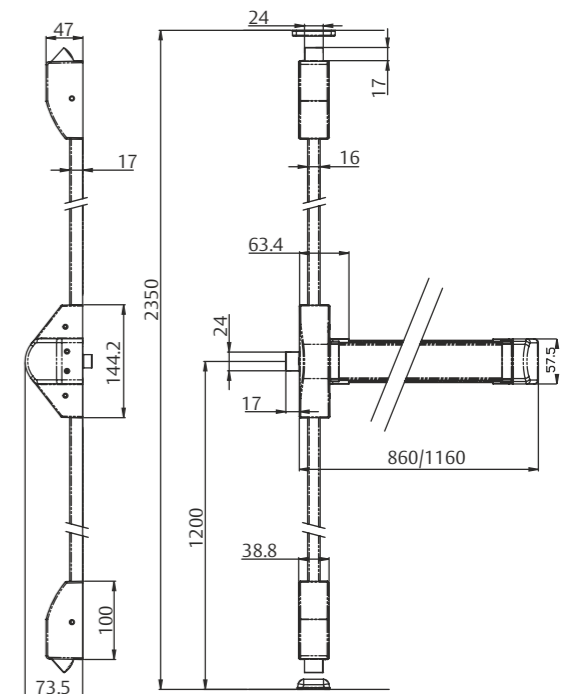
PED 300:

- Modular push bar type
- For fire and smoke applications
- High durability 2,00,000 cycles
- One central locking point
- For one or double leaf door up to 200 kg
- For all types of door
- For doors up to 1200 mm width in standard
- For doors up to 1400 mm width in option
- Steel pullman latch in standard
- Dead latch in standard
- Steel or zinc alloy swing latch
- Zinc alloy cover 38 mm width
- Aluminium touch bar 1046 mm long
- Bar to be cut
- 73 mm projection
- HO function in option
- Micro switch version in option

Panic Exit Device Characteristics

PED 300+PED/GV:

- Set of rods, rod covers and vertical latches
- To fit modular cross bar
- For 2 (top & bottom) vertical locking points installation
- For one or double leaf door
- For doors up to 2350 mm high in standard
- For doors up to 3200 mm high in option
- Steel pullman latches



Panic Exit Device PED 200 Push bar

Panic Exit Device Push Bar - Rim Device

Model no.: PED 200

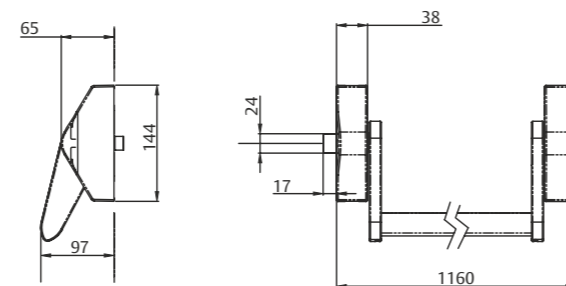
- Panic exit device with central locking point - RIM



Panic Exit Device Characteristics

PED 200:

- Modular cross bar type
- For fire and smoke applications
- High durability 2,00,000 cycles
- One central locking point
- For one or double leaf door up to 200 kg
- For all types of door
- For doors up to 1200 mm width in standard
- For doors up to 1400 mm width in option
- Steel pullman latch in standard
- Dead latch in standard
- Zinc alloy or s/steel cover 38 mm width
- Steel or s/steel bar 1075 mm long
- Bar to be cut
- 97 mm projection
- HO function in option
- Micro switch version in option



All dimensions are in mm

Panic Exit Device PED 200 Push bar

Panic Exit Device Push - Vertical device Vertical Locking point

Model no.: PED 200+PED/GV

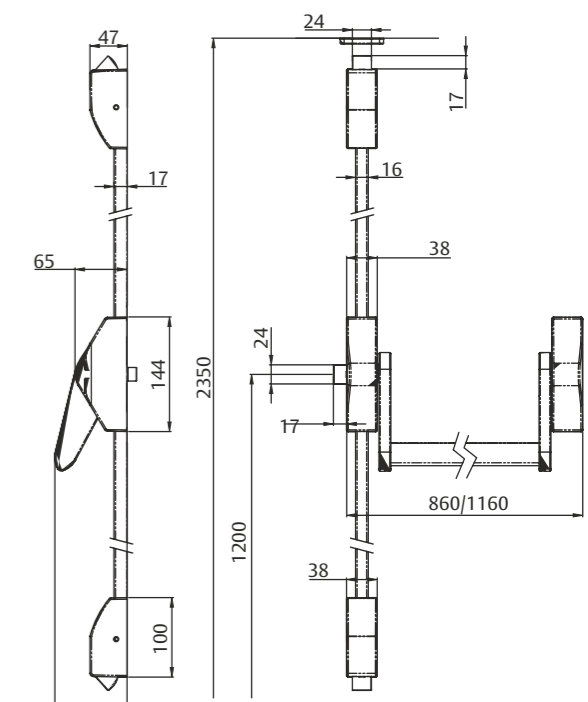
- Set of 2/3 locking points PED composed of Modular Cross Bar and kit for 2 vertical locking point



Panic Exit Device Characteristics

PED 200:

- Modular cross bar type
- For fire and smoke applications
- High durability 2,00,000 cycles
- One central locking point
- For one or double leaf door up to 200 kg
- For all types of door
- For doors up to 1200 mm width in standard
- For doors up to 1400 mm width in option
- Dead latch in standard
- Steel swing latch
- Zinc alloy or s/steel cover 38 mm length
- Steel or s/steel bar 1075 mm long
- Bar to be cut
- 97 mm projection
- HO function in option
- Micro switch version in option



Panic Exit Device Characteristics

PED 200+PED/GV:

- Set of rods, rod covers and vertical latches
- To fit modular cross bar
- For 2 (top & bottom) vertical locking points installation
- For one or double leaf door
- For doors up to 2350 mm high in standard
- For doors up to 3200 mm high in option
- Steel pullman latches

Panic Exit Device

Panic Exit Device PED 300 / PED 200

Model no.	Description
PED300/--/GG	Panic Exit Device - Touch Bar - 1200mm
PED300/--/GG + PED/GV/G	Panic Exit Device - Touch Bar - 1200mm W/Vertical 2 Pt Locking
PED200/--/GG	Panic Exit Device - Touch Bar - 1200mm
PED200/--/GG + PED/GV/G	Panic Exit Device - Touch Bar - 1200mm W/Vertical 2 Pt Locking

Panic Exit Trim Specification

Outside Device	Blind Plate	Modular Lever Handle
No outside opening	•	•
Free passing door		•
Cylinder locking - knob / / lever handle opening		•

Accessories Micro

Part No	Description
Microswitch Kit - PED 200	Microswitch Modular Kit for PED 200 Series Panic Device
Microswitch Kit - PED 300	Microswitch Modular Kit for PED 300 Series Panic Device

Panic Exit Device OT 200 - Exit trim

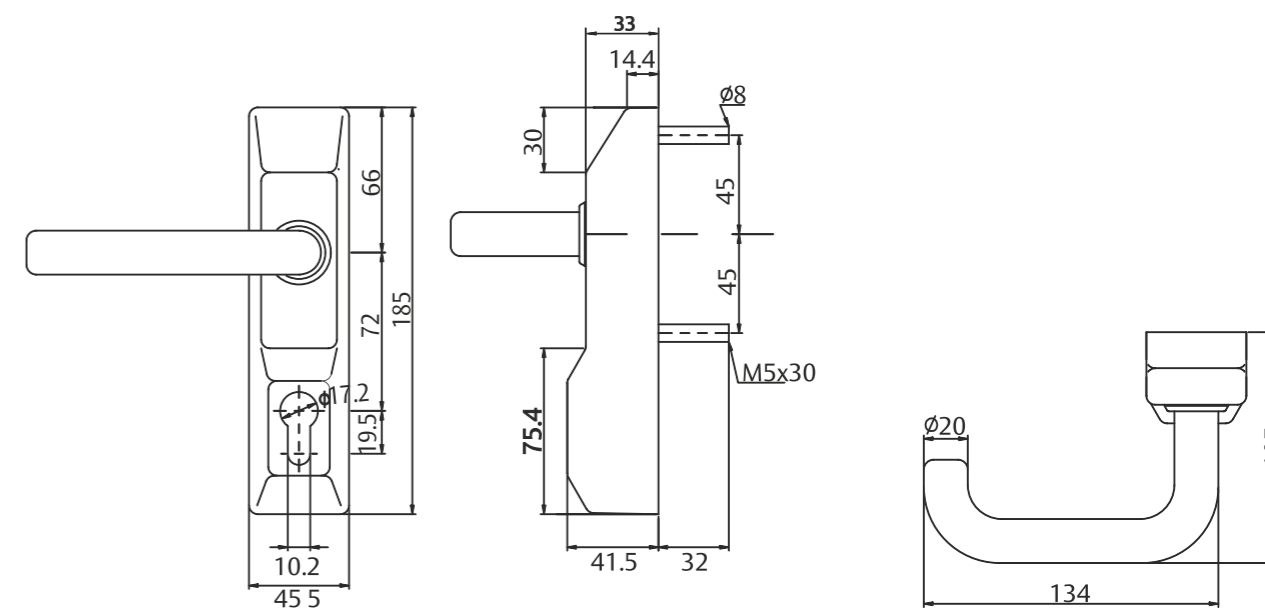
Panic Exit Trim point

Model no.: OT 200

- Outside trims rim type
- With or without half euro profile cylinder
- Standards spindle suitable for doors up to 50 mm thickness

Finish

- PL : Silver
- NE : Black
- SA : S/Steel effect



Panic Exit Trim Ordering details

Model No.	Description
PED/A/210/PL	Panic Exit Lever Trim - Passage
PED/A/220/PL	Panic Exit Lever Trim - W/Cylinder Hole
PED/A/230/PL	Panic Exit Knob Trim - W/Cylinder Hole

Panic Exit Device Feature & Benefits

Panic Exit Device

Model no.: AAED 400 Series

- Surface mounted, rim type
- Slim, neat design
- 500,000 cycles tested
- Fire rated for 3 hours



Standard & Certification

ANSIA156.3 Grade 1

Technical Details

- Rim type push bar
- Half length, 1045mm as standard
- For doors up to 1200 x 2400mm in standard
- Easy installation and adjustment
- Compatible accessories
- UL listed for fire exit hardware up to 3 hours
- Suitable for single leaf and double leaf doors
- With satin chrome external lever trim

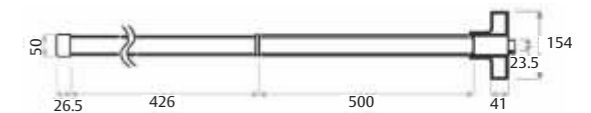
All dimensions are in mm

Panic Exit Device AAED 400 Series

Panic Exit Device

Model no.: AAED 401

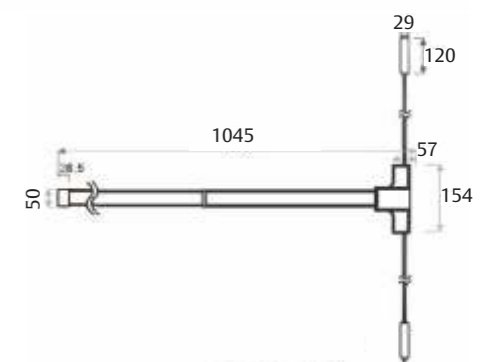
- Panic exit device with central locking point - RIM
- Painted galvanized steel or stainless steel finish
- With AAET411SC external lever trim in satin chrome finish



Panic Exit Device

Model no.: AAED 402

- Panic exit device with double locking points - RIM
- For standard door height 2400mm
- Option available for 3000mm door height
- Painted galvanized steel or stainless steel finish
- With AAET411SC external lever trim in satin chrome finish

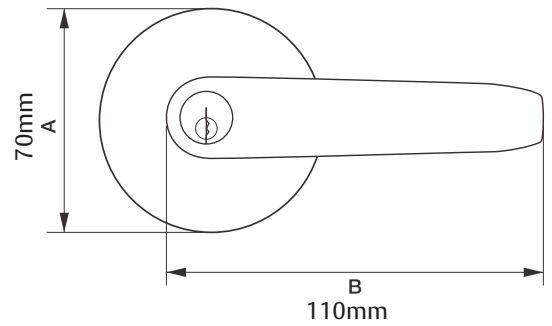


Panic Exit Device AAED 400 Series

Panic Exit Device

Model no.: AAET411SC

- Panic exit trim in satin chrome finish



How to order

Code example

AAED401P

Finish Code

S - Stainless Steel
P - Painted

Locking Code

1 = Single-point locking
2 = Double-point locking

For 3000mm door height, please order AAED402P - 3000

or AAED402SS - 3000

ASSA ABLOY Group is the global leader in access solutions. Every day, we help billions of people experience a more open world.

ASSA ABLOY

ASSA ABLOY Opening Solutions leads the development within door openings and products for access solutions in homes, business and institutions. Our offering includes doors, door and window hardware, locks, access control and service.

assaabloy.com

MUMBAI

EcoStar, 11th Floor, 1104 / 1105,
Off Aarey Road, Vishweshwar Nagar
Goregoan (East),
Mumbai - 400063,

PUNE

Sr. No.36, Hissa No.1, Plot No.11,
Village Pisoli Haveli Kondhwa,
Pune - 411 028,
Maharashtra

Gurugram

Plote No.A1A-1, A-2, Vanijya Nikunj,
Ground Floor, Enkay Centre building,
Udyog vihar Phase-V,
Gurugram-122016, Haryana

BENGALURU

#36/2, Third & Fourth Floor,
Patalamma Temple Street,
Near South-end Circle, Basavanagudi,
Bengaluru-560 004, Karnataka

HYDERABAD

2nd Floor, Alcazar Mall,
Plot No. 497/498,
Road No. 36, Jubilee Hills,
Hyderabad-500 033, Telangana

CHENNAI

23-2, Old No 39-2, Cenotaph Road,
1st Lane, Near to Crown Plaza Hotel,
Opp Canara Bank, Teynampet,
Chennai-600 018