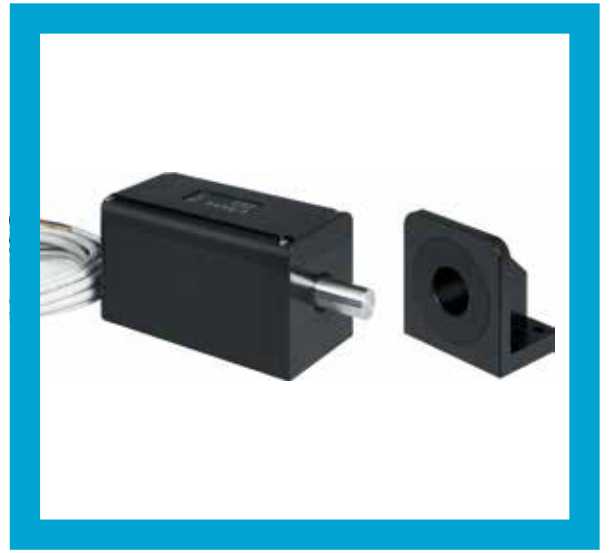


Electric Bolts from effeff



Drop and gate bolt
model 843G

 **effeff**
ASSA ABLOY

More security indoors and outdoors

Experience a safer
and more open world

Drop and gate bolt model 843G

Applications and advantages

Advanced technology
for indoor and outdoor
use

More security for doors and gates – for indoor and outdoor use

The electric motorised bolt 843G from effeff is suitable for indoor and outdoor use.

Typical application areas are gates, roller shutters or heavy duty doors.

The 843G is the right solution wherever high security and weather resistance are required.

For use on:

- Oversized doors and gates
- Roller shutters and roller gates
- Heavy duty doors



Film with examples of use
and further details



High security

Model 843G is suitable to secure security doors, roller shutters and security gates. The locking bolt made of non-corrosive steel has a diameter of 18 mm and resists a load of 50,000 N.

Comprehensive monitoring

Door and bolt positions can be monitored electrically and can be linked to intrusion systems or EAC systems. The 843G is equipped with anti-tamper contacts. There will be an alarm, when the cover will be removed.

Low power consumption

When heating is deactivated, the bolt only consumes a maximum of 40 mA in standby mode.

Weatherproof application

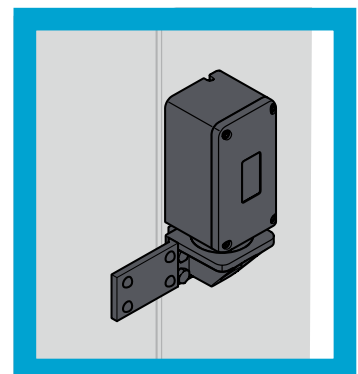
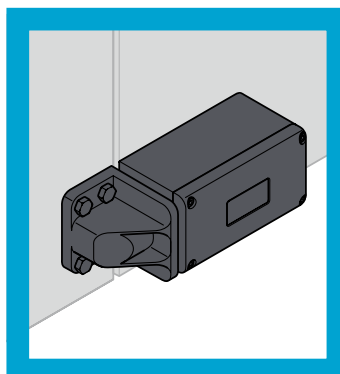
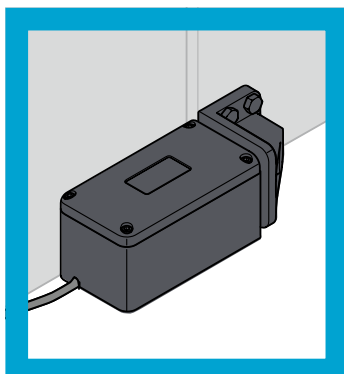
As the 843G is IP67 certified, it's protected from ingress of dirt, dust and water. It can even withstand temporary complete immersion in water. The locking counterpart is made of coated aluminium and is extremely corrosion-resistant.

A switchable heating ensures continued function at temperatures below freezing (down to -35°C).

Installation flexibility

The 843G can be installed horizontally and vertically. Model 843G is field selectable. Means it can be operated in fail-locked or fail-unlocked mode. This can be configured via dip switches.

Mounting examples:
Suitable for horizontal
and vertical installation.



Drop bolt model 843G

Technical data



Drop bolt (motor bolt) model 843G

Electric motor bolt for doors, gates and roller shutters with high security demands. For outdoor and indoor use.

Features

- Holding force 50 000N
- Designed for outdoor use, protection class IP67
- Integrated heating, can be switched on via dip switch
- Fail-locked/fail-unlocked configurable via dip switch
- Push button/switch function configurable via dip switch (Toggle mode)
- Multi-voltage 12V DC to 24V DC (heating only 24V DC)
- Various monitoring contacts
- Anti-tamper contact
- Mounting position vertical and horizontal

Scope of delivery

Drop bolt 843G with 3 metre connection cable, with housing base seal, incl. counterpart

Note

Please note the installation instructions.

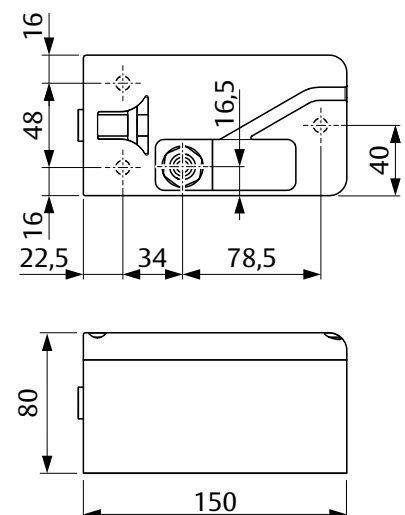
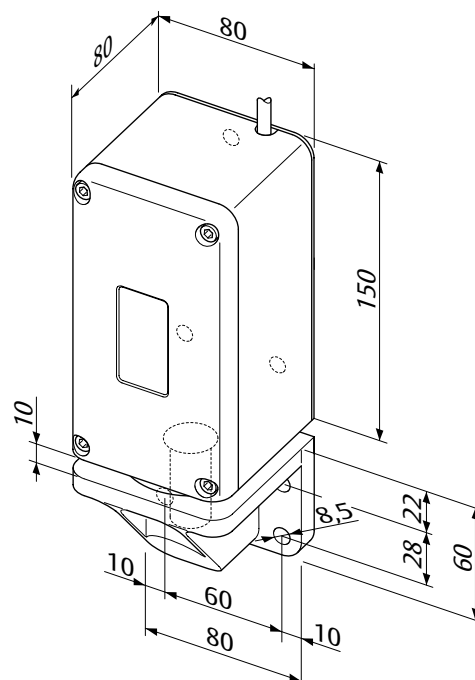
For vertical mounting position, the locking direction is recommended to close downwards.

Technical attributes

Input operating voltage	12-24 V DC
Rated operating voltage tolerance range	± 15 %
12 V starting current	1000 mA
24 V starting current	500 mA
12 V latching current (standby)	40 mA
24 V latching current (standby)	30 mA
Current with heater ON (standby)	1.6 A at 24V DC
Max. current with heater ON	2.0 A at 24V DC
Holding force	50000 N
Diameter lock deadbolt	18 mm
Lock bolt throw	30 mm
Length	150 mm
Width	80 mm
Height	80 mm
Dimensions strike	80 mm x 80 mm x 60 mm
Installation position	vertical (only closing downwards recommended) and horizontal

Article / Feature

Article / Feature	Order no.
12-24 V DC for securing gates, incl. strike	8 4 3 G - 1 - - - - Q 4 1



The ASSA ABLOY Group is the global leader
in access solutions. Every day we help
people feel safe, secure and experience
a more open world.

ASSA ABLOY
Opening Solutions

ASSA ABLOY
Sicherheitstechnik GmbH
Bildstockstrasse 20
72458 Albstadt
GERMANY
Tel. +49 7431 123-700
export.effeff@assaabloy.com
www.assaabloy.com/de