

# Digital Access Solutions



**ASSA ABLOY**

Experience a safer  
and more open world



# The ASSA ABLOY Group

The global leader in access solutions

ASSA ABLOY Group is the global leader in access solutions. Every day, we help billions of people experience a safer and more open world. ASSA ABLOY Opening Solutions leads the development within door openings and products for access solutions in homes, businesses and institutions. Our offering includes doors, door and window hardware, mechanical and smart locks, electromechanical locks, access control solutions and service.

With over 150 companies operating in more than 70 countries, the Group is the strongest global player in the industry with over 61,000 employees and more than SEK 141 billion sales worldwide.

Today, ASSA ABLOY is the leading global supplier of intelligent lock and security solutions. Its products account for more than one in ten of all lock installations worldwide.

ASSA ABLOY Group is represented in all major regions, on both mature and emerging markets, with leading positions in many markets all over the world.

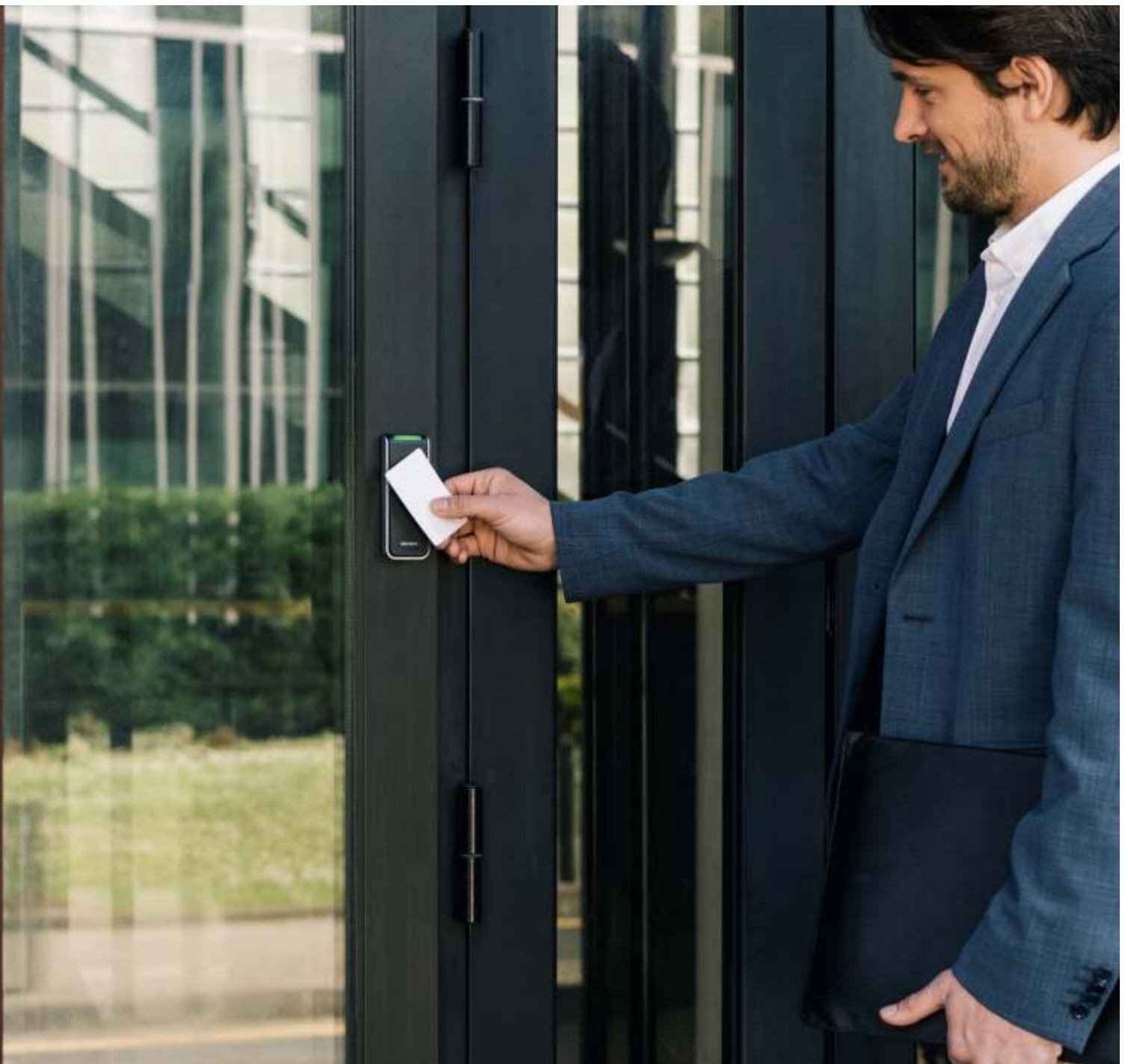
In the rapidly growing electromechanical security sector, the Group has a leading position in fields such as access control, identification technology, automatic doors and hotel security.

ASSA ABLOY's vision is to be the most innovative supplier of total door opening solutions in order to deliver safe and convenient security solutions that provide real added value to customers.

Using the latest 'technologies together with tried and tested' techniques, we are constantly developing innovative solutions that improve our customers' lives through greater security, safety and convenience.

ASSA ABLOY has been producing an annual sustainability report based on GRI (Global Reporting Initiative) guidelines since 2005. We are leading the way, with more than 250 environmental product declarations across the Group since 2008.

Sustainability is integrated in all Group processes: innovation, product development, manufacturing, logistics and sales.



# Incedo™

In today's dynamic landscape, security needs are constantly evolving, demanding agile and adaptable access control solutions.

Incedo offers a future-oriented access control solution with two unique system management options — Lite and Plus — designed to give every customer a scalable solution focused on their security needs.



Incedo  
Access Management Solution

Incedo is the next leap forward in building security. A single access management solution bringing hardware and software together. ASSA ABLOY's Incedo Business platform launches with two unique system management options Lite and Plus designed to give every customer a scalable solution focused on their security needs.

## Key benefits

- A feature-rich, single online platform solution embedded within your system
- No need for a dedicated PC
- Suitable for 32 wired/wireless doors to upto 10,000 doors per system
- Access for up to 1,000,000 people
- Online readers
- Auto ID of hardware
- Wiegand or OSDP Wired Doors
- Wireless Online Door
- Biometric Support
- Comprehensive Reports

## Incedo Lite

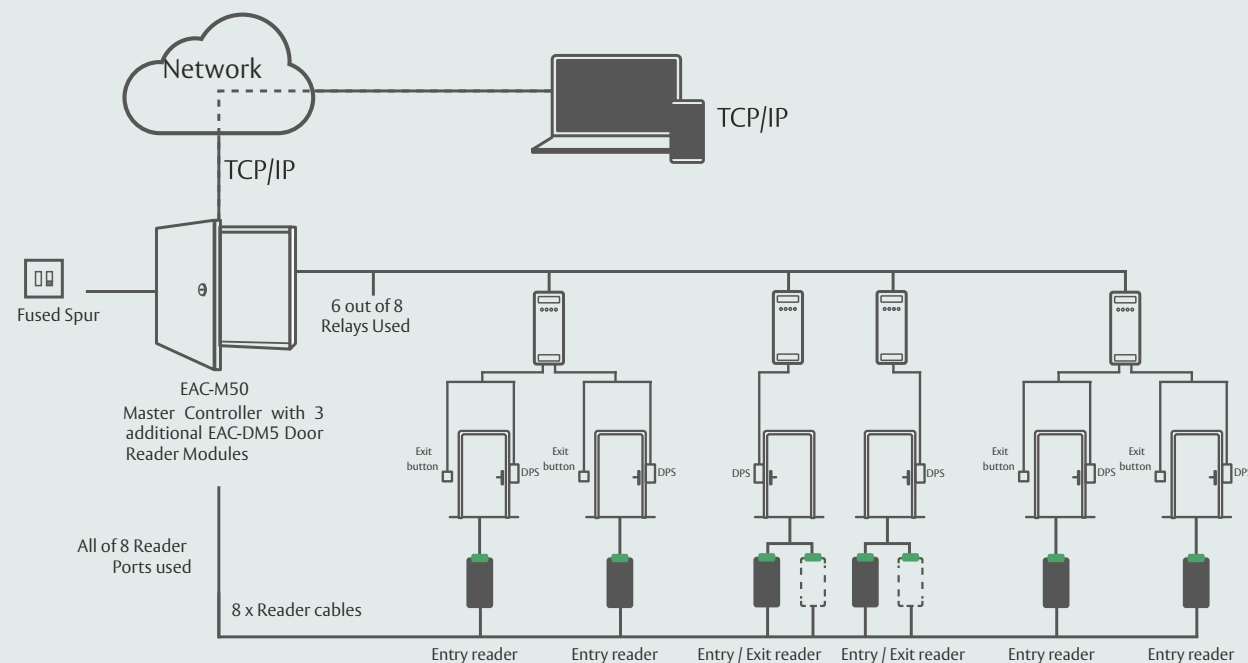
The quickest and simplest way to revolutionise how you monitor and manage access control on site.

- Upto 32 Doors per system
- Upto 1,000 Keyholders
- 3 Credentials per Keyholders
- Local Anti-Pass back

## Incedo Plus

Step up from Lite with enhanced access control features to manage multiple sites and integrate third-party hardware and smart building solutions.

- API Third-Party integration
- Multiple Master Controllers
- Upto 10,000 Doors per system
- IO Module
- Upto 1,000,000 Keyholders
- 4 Credentials per Keyholders
- Anti-Pass back



Incedo  
Access Management Solution

## Connected access control for smarter working

Aperio wireless devices come ready for both online and offline integration with Incedo™. Additionally, Incedo Plus offers integration with range of third party application and system.



## Pick the right access management system

	Incedo™ Lite	Incedo™ Plus
Wireless, battery-powered locks	✓	✓
Integration with third party security systems (CCTV, Biometrics etc...)	✗	✓

# Incedo

## Access Management Solution

### Controller

The Controller's inbuilt TCP/IP port lets you manage an Incedo system from any standard browser depending on the software management configuration you select. Dedicated RS485 ports manage cluster controllers and hubs for communicating with either wired or wireless door locks. Upto 4 Door Reader Modules (Managing up to 8 wired door readers) can connect with an Incedo Cluster Controller. Status LEDs provide visual feedback.

#### Cluster Controller Kit in Metal Box

**Model No.:** EAC-M50

##### Description

- Cluster controller & door reader module in lockable metal box with power supply
- Enclosure expandable up to 4 reader modules (EAC-DM5)
- Hardware compatible with Incedo Lite and Plus platforms
- Includes charging circuit for 12V 7Ah sealed lead acid battery (battery not included)
- Control up to 32 (wired or wireless) doors - Lite or up to 10,000 doors - Plus
- Easy integration
- Compatible with Aperio wireless door locks (using Aperio RS485 Hub)



#### Cluster Controller (Plastic Housing)

**Model No.:** EAC-CP5

##### Description

- Cluster controller in plastic housing only
- Expandable with up to 4 reader modules (EAC-DM5)
- Hardware compatible with Incedo Lite and Plus Platforms.
- Control up to 32 (wired or wireless) doors - Lite or up to 10,000 doors - Plus
- Easy integration
- Compatible with Aperio wireless door locks (using RS485 Aperio Hub)
- Must be connected up to an external 12V PSU (not included)



# Incedo

## Access Management Solution

### Reader Module

Door Reader Modules are a bridge between your ASSA ABLOY Incedo access control system and hardwired door with readers. A single Door Reader Module may connect up to two readers to your system

#### 2 Door Reader Module in Plastic Housing

**Model No.:** EAC-DP5

##### Description

- Connect two 'read in' or one 'read in/out' reader per Door reader module
- Manage up to two door position sensors and request to exit from each door reader module



#### 2 Door Reader Module on IPS Plate

**EAC-DM5**

##### Description

- Connect two 'read in' or one 'read in/out' reader per Door reader module
- Manage up to two door position sensors and request to exit from each door reader module



# Incedo

## Access Management Solution



### Programmers

Keep everyone's credentials up to date with a range of convenient programmers and updaters. With the correct access rights, everyone keeps moving easily and securely.

### Credentials

Our range of convenient credentials have intelligence and security built-in. Cards and tokens offer broad RFID compatibility. Encrypted mobile keys enable users to open doors with their smartphone.

### Intelligent Twin Reader Terminal

**Model No.:**EAC-TPT

#### Description

- Multi-function Controller
- Compatibility: support for OSDP and Wiegand readers
- Equipped with 2 reader inputs which feature the latest secure OSDP interface protocol with 4 inputs and 3 controllable relays.
- The EAC-TPT can store up to 10K credentials and 100K buffered transactions per channel, whilst also providing offline validation



### Multi-discipline Reader

#### Description

- Support for low and high frequency credentials. Compatible with HID iCLASS and Seos secure technologies
- The reader is available in two variants, OSDP or Wiegand protocol.
- IP54 rating
- The Reader comes with tri-coloured LED and buzzer



# Incedo

## Access Management Solution







## Aperio®

Aperio's DNA is built on integration and the extension of access control capabilities without wiring. Formerly mechanical secured doors can now be integrated into the access control system operated with the same credentials.

Aperio-equipped access points are managed from the interface of your system software. Over 130 access control manufacturers globally have integrated battery-powered Aperio locks to work

## Aperio Wireless Locking Technology



Cost effective, access control - without wires. Aperio® is easy to retrofit and integrate with your existing AC system.

Installing traditional access control doors can be very expensive due to the extensive wiring required, which is why access control systems often only cover doors with very high security requirements - leaving all other doors with mechanical locks unmonitored and unmanaged. Losing a master key for these doors is not only a major security risk, but it can also be a costly exercise to replace compromised locks.

With Aperio® technology all doors can easily be upgraded and wirelessly linked to the access control system by using Aperio® battery powered electronic locking device with integrated RFID or BLE readers\*- optimising access control and increasing security.

android iOS



\*BLE is enabled in E100, H100 and KL100



# Aperio

## Wireless Locking Technology

### H100 Handle

#### Description

Aperio H100 packs the power and flexibility of wireless access control into one slim, cleverly designed, battery-powered door handle.

- Suitable for wooden, steel and tubular frame doors (and glass doors with standard lock cases)
- Outside handle rotates freely - inside handle is always engaged
- LED for status visualisation
- H100 holds fire certification: EN1634-1



### C100 Double Knob Cylinder

#### Description

Metal double knob cylinder euro profile-for use in indoor areas

- 30mm x 30mm double cylinder
- Outside knob free wheeling - inside knob always engaged
- Freely rotating lock cam
- Stores up to 10 emergency cards
- Compatible with all DIN mortice locks
- Suitable for locks on glass door leafs and standard doors
- LED for status visualisation



### C100 Single Knob Cylinder

#### Description

Metal single knob cylinder euro profile-for use in indoor areas

- 30mm single cylinder
- Freely rotating lock cam
- Stores up to 10 emergency cards
- Compatible with all DIN mortice locks
- Suitable for locks on glass door leafs and standard doors
- LED for status visualisation



# Aperio

## Wireless Locking Technology

### E100 Escutcheon

#### Description

- Euro profile suitable for 40-50 mm door
- Stores up to 10 emergency cards
- 8mm spindle
- 85mm center
- Option of U or L- shaped handle



### L100 High Security Lockset

#### Description

- With or without keypad reader
- Main electronics inside - Reader element outside
- Including emergency battery connector and indicator LED's
- Outside handle controlled by electronics Inside handle always engaged (request to exit sensor included)
- Integrated sensors for bolt and door position,
- Mechanical key override
- LED for status visualisation





# Aperio

## Wireless Locking Technology

### KS100 Server Rack Lock

#### Description

- Real-time communication to the access control system
- Designed for standard 25mmx150mm server lock openings
- Ideal for co-location data centers with multiple companies requiring access
- For use on left or right hand doors
- Standard server cabinet “Swing-handle” design
- Integrates to existing access control system Stores up to 10 emergency cards
- Powered by PoE or external power supply
- LED for status visualisation
- Mechanical key override possibility



### KS200 Wired Server Rack Lock

#### Description

- Real-time communication to the access control system
- Designed for standard 25mmx150mm server lock openings
- Ideal for co-location data centers with multiple companies equiring access
- Wiegand (KS200) | OSDP (KS210) protocol
- For use on left or right hand doors
- Standard server cabinet “Swing-handle” design
- Integrates to existing access control system Stores up to 10 emergency cards
- Powered by PoE or external power supply
- LED for status visualisation
- Mechanical key override possibility



# Aperio

## Wireless Locking Technology

### KL100 Cabinet Lock

#### Description

- Suitable for cabinets and drawers where audit trail and monitoring is required
- Cabinet lock latch bolt status monitoring
- Online & offline transaction audit trail capabilities
- Easy to install wireless lock
- Low maintenance
- 50,000 cycles on CR123A battery
- Low battery signalling and reporting
- Two forms of override available, including Mechanical key override and battery jump start pack



### Communication Hub

#### Description

- For connection to EAC system via Wiegand, RS485 or IP
- Provides radio communication to the Aperio® door devices
- For standard electrical installation boxes
- LED for status visualisation
- Wiegand: AH20-WIESTD-G5
- RS485: AH30-RS485-G5
- IP: AH40-IP-G5
- For indoor use only



### PAP Software Tool (online/offline)

#### Description

Software tool to setup and configure Aperio® devices/ hubs

- The Aperio wireless dongle is connected directly to the PC via a USB connection
- Communicates with the Aperio PAP Tool and establishes a wireless connection with the online components. The pre-set settings are transmitted to the escutcheons and cylinders via this wireless connection
- The entire radio communication AES-128 bit encrypted when loading and transferring data



## Aperio Wireless Locking Technology

### Glass Patch Fitting

#### Description

- Lock fitting for Euro profile cylinder or DIN handle
- Suitable for 8, 10 and 12 mm tempered glass
- With latch and deadbolt
- High quality finish



## CLIQ<sup>®</sup>

More than a century of ASSA ABLOY Group expertise in lock and key security went into creating, enhancing and patenting CLIQ technology.

CLIQ builds on our unique master key system expertise to offer you future-proofed access management in a fast-moving world.



# CLIQ

## Key-based Digital Access Management

CLIQ is a straightforward, key-based system which transforms mechanical to high-security digital access management. With the CLIQ system you are able to manage your keys and personnel access rights from a central location. Benefit from the convenience of remote management and high-level security throughout your business anytime and from anywhere.

The latest CLIQ chip generation is designed to be future-proof, featuring AES encryption and rapid processing speed coupled with efficient energy management. Electronic contact between the key and cylinder ensures secure data transmission. The system is powered by a battery inside the key, offering a typical 10-year lifetime. It is maintenance-free for up to 200,000 cycles. Installing the wide range of locking cylinders and padlocks is quick and easy as no cabling is required. Simply swap your mechanical cylinders with a single screw change.

### eCLIQ

#### Description

Fully electronic version  
One mechanical key profile plus electronic coding

android iOS   



### PROTEC<sup>2</sup> CLIQ

#### Description

Electromechanical version  
Multiple mechanical key profiles plus electronic coding

android iOS    

**CPNI**  
Centre for the Protection  
of National Infrastructure



# CLIQ

## Key-based Digital Access Management



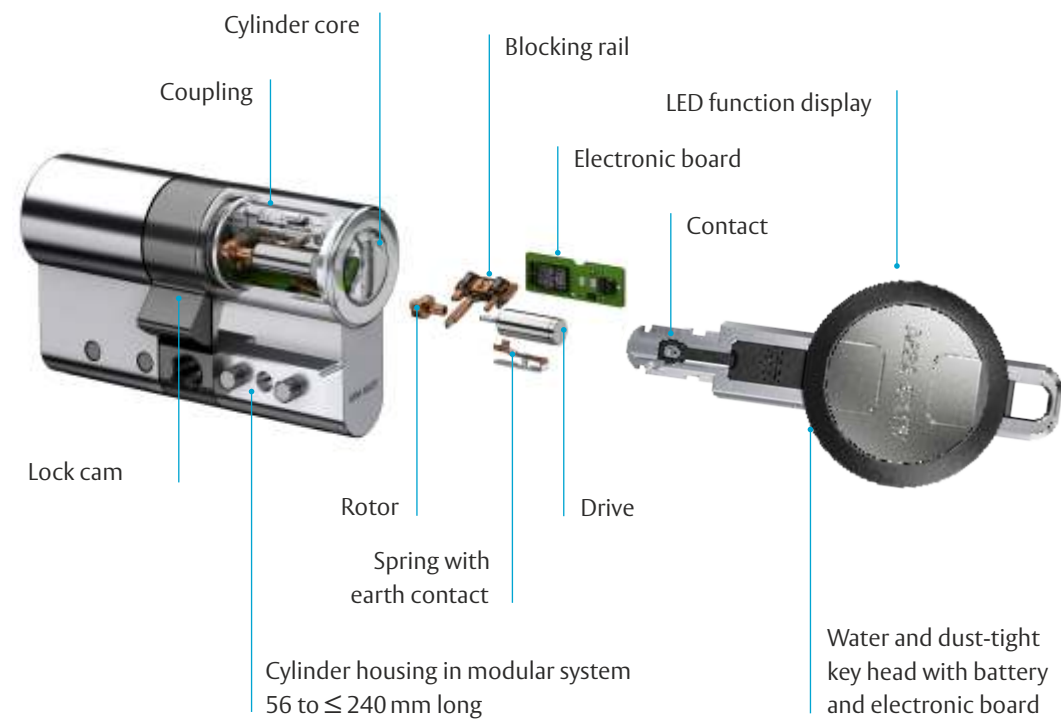


# CLIQ

## Key-based Digital Access Management

### CLIQ System

CLIQ is a technology developed by ASSA ABLOY Group which unites the features of mechanics and electronic and is the first mechatronic locking technique without any cables. This combination of CLIQ offers higher security and more flexibility than any other locking system.



### Complete, Cost-Saving, Centralized Administration

- Cost efficient system that require minimal level of maintenance
- Lost keys will no longer require the replacement
- Manage and control the security electronically
- Unlimited number of master key system managed by CLIQ remote in anywhere



# CLIQ

## Key-based Digital Access Management

### Standard User Key

#### Description

- Used with the CLIQ cylinders and padlocks
- Modern reversible key system
- Unique electronic and system encryption
- Data and power transmission to the cylinder is contact based and highly encrypted
- IP67 Ingress Protection



### Programming Key

#### Description

- Used with the CLIQ programming device
- Transfers up to 750 programming steps to cylinder
- Can read up to 1500 events from cylinders and transfers them to the software
- Protected by 6-digit individual PIN code
- About 30,000 locking operations
- IP67 Ingress Protection



### Connect Key

#### Description

- Incorporates Bluetooth® technology to update keys without remote programming device
- Get changes to authorizations and time settings using CLIQ® Connect app
- Provides immediate audit trails when key is connected to programming device or app
- About 100,000 locking operations
- IP67 Ingress Protection



### Spark Key

#### Description

- Spark key is the first battery-free CLIQ key that generates its own energy
- Energy required for locking and validating access is produced by generator in the key during insertion into the cylinder
- Spark key is fully compatible with existing CLIQ systems
- Data is transferred between the CLIQ cylinder and Spark Key with high level of protection



# CLIQ

## Key-based Digital Access Management

### Profile Double Cylinder

#### Description

- For use in entrance and exit doors as well as internal doors
- Maintenance free for up to 200 000 cycles
- Splash-proof IP54
- Dust and protection cap available for one or both sides
- Cam made of break-proof, corrosion resistant stainless steel
- Available in 30|30 and 35|35 lengths (other lengths available on request)
- Brass cylinder housing components



### Profile Knob Cylinder

#### Description

- For use in internal doors
- Maintenance free for up to 200000 cycles
- Splash-proof IP54 rated
- Dust and rain protection cap available for one or both sides
- Cam made of break-proof, corrosion resistant stainless steel
- Basic cylinder length 61mm (L=30|30mm) Also available in lengths of 35|35mm with other lengths available on request
- Brass cylinder housing components
- Finish: Satin Nickel



### Profile Single Cylinder

#### Description

- For use on doors which only need locking on one side (e.g. gates)
- Maintenance free for up to 200000 cycles
- Splash-proof IP54 rated
- Dust and rain protection cap available
- Cam made of break-proof, corrosion resistant stainless steel
- Available in 30mm
- Brass cylinder housing components
- Finish: Satin Nickel



### Profile-Half Cylinder

#### Description

- Maintenance free for up to 200 000 cycles
- Splash-proof IP54
- Dust and rain protection cap available for one or both sides
- Cam made of break-proof, corrosion resistant stainless steel
- Basic cylinder length 31mm
- Finish: Satin Nickel



### Switch Cylinder

#### Description

- For use on machinery and vehicles which need an additional layer of security
- Maintenance free for up to 200000 cycles
- Splash-proof - IP54 rated
- Dust and rain protection cap available
- Key rotation 60°
- Brass cylinder housing components
- Finish: Satin Nickel



### Switch Cylinder

#### Description

- For use in retail environments on roller shutter doors
- Maintenance free for up to 200000 cycles
- Splash-proof IP54 rated
- Dust and rain protection cap available for one or both sides
- Fixed total length 47mm
- Cam made of steel and is ordered in one of four positions
- Cam radius 17mm
- Finish: Satin Nickel



# CLIQ

## Key-based Digital Access Management

### Padlocks

#### Description

- Used to secure gates, chains and electrical installations
- Maintenance free for up to 200,000 cycles
- Dust and rain protection cap available optionally
- IP67 certified with protective cap
- Key retaining in open position
- Housing - Chrome Plated Brass
- Cylinder - Nickel Plated Brass
- Standard shackle clearance height 25mm & 50mm
- Hardened steel shackle as standard
- Non-corrosive steel shackle 8mm diameter
- Available for the 25mm padlock



### Cam Lock

#### Description

- Maintenance free for up to 200,000 cycles, integrated lubricant reserve
- IP55 with dust and rain cap
- Rotation options:
  - Standard 90°, optional 180°
  - Left or right rotation is configured by cam Available in M19 and M21 sizes
- Fixings with M10 nut
- Various Locking levers available on request
- Optionally available for use in potentially explosive atmospheres in Zone 1 (ATEX=II 2G EX IB IIB T4)



### Furniture Locks

#### Description

- Maintenance free for up to 200,000 cycles, integrated lubricant reserve
- IP54 without protection against dust and rain
- Optionally available for use in potentially
- Explosive atmospheres in Zone 1 (ATEX=II 2G EX IB IIB T4)
- Variants include:
  - Square Deadbolt
  - Square Latchbolt
- Key rotation 90°



# CLIQ

## Key-based Digital Access Management

### Furniture Locks

#### Description

- Maintenance free for up to 200,000 cycles, integrated lubricant reserve
- IP54 without protection against dust and rain
- Optionally available for use in potentially
- Explosive atmospheres in Zone 1 (ATEX=II 2G EX IB IIB T4)
- Variants include:
  - Espagnolette with bolt and rotating bars
  - Espagnolette without bolt and rotating bars
- Key rotation 90°



### Nightlatch Cylinder

#### Description

- Utilised in government applications, sub-stations and transformer doors, as well as residential applications
- Maintenance free for up to 200,000 cycles Dust and rain protection cap available for one or both sides
- Anti-drill protection
- Finish: Satin Nickel



### Cam Lock

#### Description

- Secures cabinets, lockers and cupboards
- Maintenance free for up to 200,000 cycles Dust and rain protection cap available Key
- Withdrawal when locking lever is closed Brass
- Cylinder housing components Finish: Matt Chrome Plated





# CLIQ

## Key-based Digital Access Management

### Desk Programming Device

- Description**
- Provides a secure interface between the keys and the CLIQ Web Management Software
  - Reads even memory in electronic E2 and E3 user keys
  - Programmes the E3 key to retrieve audit trails
  - USB port standard fitting
  - Powered via USB



### Wall Programming Device

- Description**
- Fixed site device that enables user keys to be programmed near the work area
  - Permits changes to times and authorizations as well as the read-out event logs
  - Connection via standard network cable
  - USB-C connection for data exchange over cable
  - IP44 rated - drip water-proof



### Vandalism-Proof Programming Device

- Description**
- Programs user keys in remote unmonitored locations
  - Connected by standard network cable
  - Suitable for outdoor usage and vandalism hazard areas
  - Permits changes to times and authorisations as well as the read-out of event logs
  - Supports power over ethernet
  - Optional dust and rain cover available
  - Vandalism resistant IK9
  - IP65 (when used with weather protection cap)



# CLIQ

## Key-based Digital Access Management

### Mobile Programming Device

- Description**
- Ideal for shift supervisors or remote site leaders
  - Portable - no need to be at the control room for key updates
  - Permits changes to time and authorisation keys as well as the read-out of event logs
  - Communicates via Bluetooth with a mobile iOS or Android Device
  - Powered by 4X AAA batteries

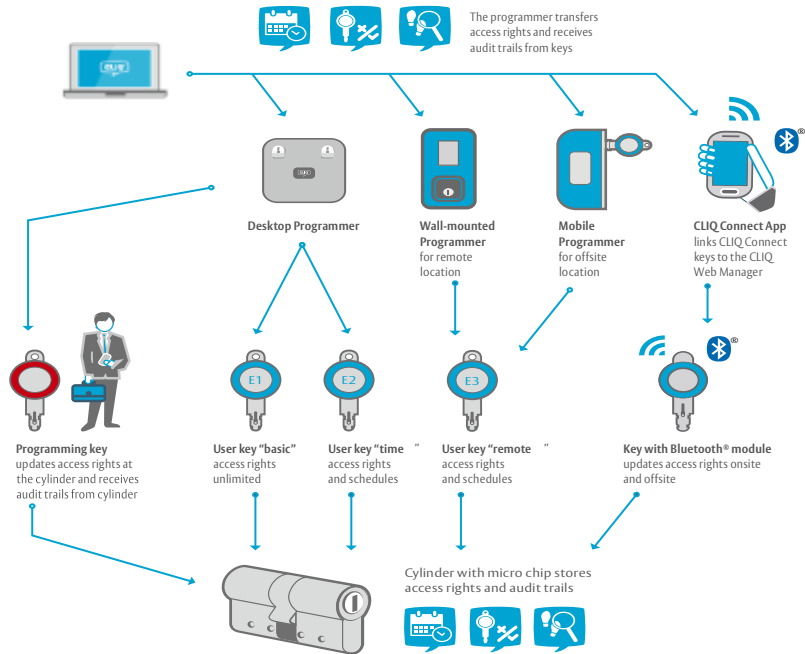


### CLIQ Web Manager Software

- Description**
- Easily manage employee and visitor's data and access profiles
  - Assign specific access levels and schedules with ease
  - Cancel keys directly from the software interface for immediate control.
  - Works seamlessly on Windows/Linux and Android/iOS platforms
  - Grow your access control system as needed with a user-friendly solution



### High Flexibility to assign and revoke access rights

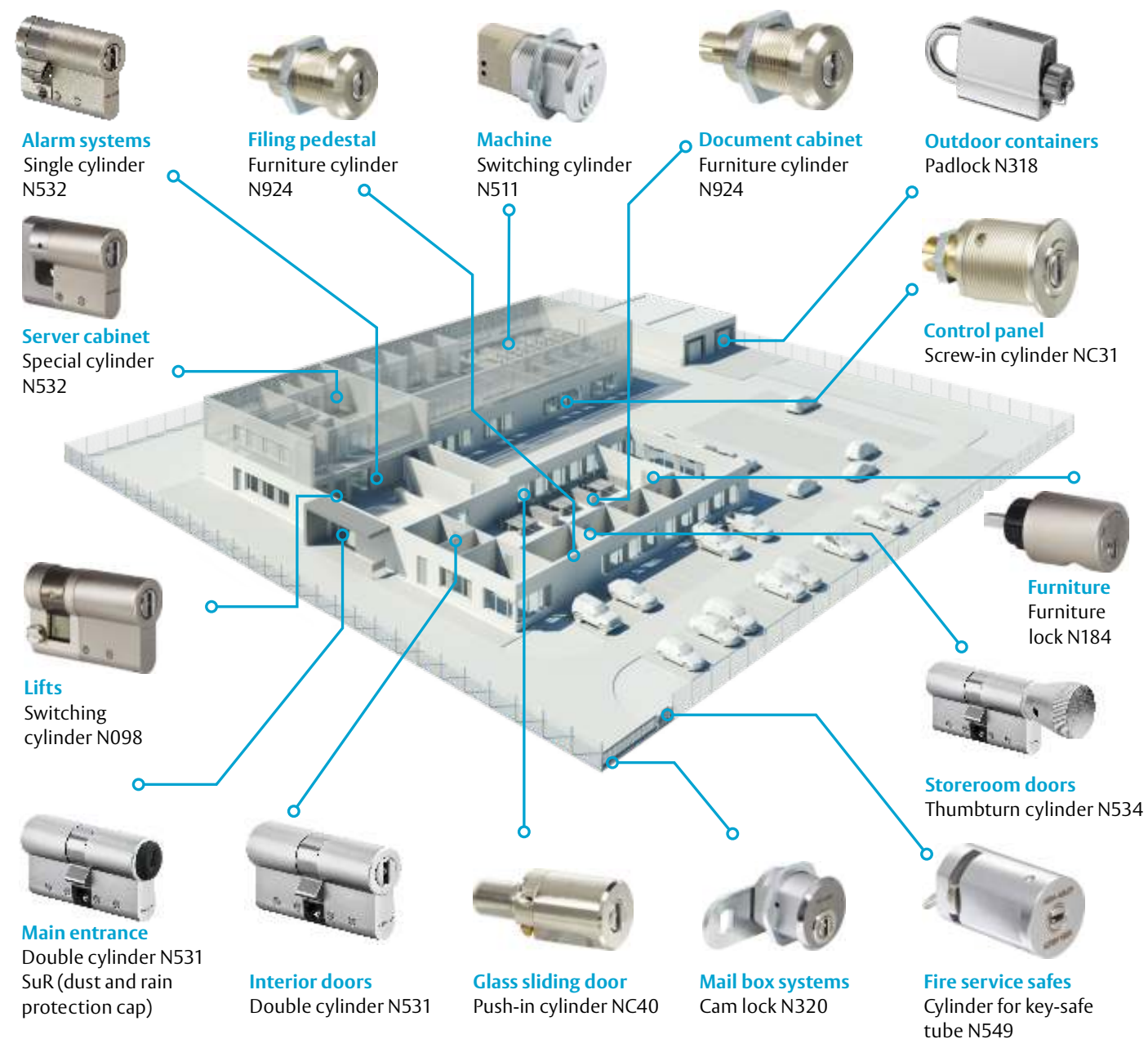


# CLIQ

## Key-based Digital Access Management

The compact CLIQ locking cylinder offers a high level of security. With a wide range of different cylinder types, the system is designed for every kind of use from the company entrance gate to securing the alarm systems, lifts, doors and cabinets

The system offers certifications for all areas of use, including external areas, ensuring building operators comply with current and future regulations.



## Electromechanical Portfolio

Electromechanical locks are critical part of access control system which utilizes electronic mechanisms to regulate entry and exit to a premise or facility.

Unlike traditional lock and key systems, electromechanical locks rely on advanced technology such as key cards, biometric scanners, or keypad entry systems to grant or restrict access.

# Magnetic Locks

Magnetic Locks are the most popular locks used in access control systems. ASSA ABLOY offers a wide range of magnetic locks to meet every requirement.

## M32 Series

### Description

- Holding force of 600 lbs.
- BondSTAT™ magnetic bond sensor & Integrated door position switch
- Will work with existing access control systems
- Fully sealed for weatherproof operations
- 10 ft. (3.05m) of jacketed, Stranded conductor cable
- Automatic dual voltage - no field adjustment required
- Instant release circuit - no residual magnetism
- Efficient, low power usage
- Rust resistant - All ferrous metal Surfaces plated for durability
- UL listed, MagnaCare® lifetime replacement, no fault warranty
- Size optimized for use with door closers



## M68 Series

### Description

- Recommended for interior and perimeter doors
- Patented instant release circuit - no residual magnetism
- Holding Force: 1200 lbs
- Surface mounts easily with mounting bracket using minimal tools
- Internal wire access chamber
- Size optimized for use with door closers
- Brushed aluminum finish
- LED shows red or green for lock status indication
- Automatic dual voltage - no field adjustment required
- Lock options include door position switch, LED indicator and anti-tamper switch
- UL Listed
- MagnaCare® lifetime replacement, no fault warranty



# Magnetic Locks

## Z4 Series

### Description

- Suitable for high use Commercial Swing Doors
- Holding forces upto 2500 lbs
- Fail-safe: unlocks when power is removed
- Applications - Aluminium doors, Glass doors, IT Storage rooms, Access control
- Easy installation: suitable for both new and retrofit usage
- Self-alignment: armature plate pivots to accommodate door drop
- Silent operation: No humming or buzzing
- Dual voltage: site selectable 12 or 24 Vdc
- Monitoring: Reed Switch monitoring and Hall-Effect monitoring on all models.
- Instantaneous release: Smart electronics on the Z Series Electromagnets eliminate residual magnetism
- Tested on fire door assemblies for upto 4 hours and CE approved



## Z Series Recessed

### Description

- Ideal for swing and sliding doors. Fixing options including wood, aluminium and steel constructions
- Holding forces up to 280kg
- Fail-safe: unlocks when power is removed
- Suitable for both new and retrofit usage
- Self-alignment: armature plate pivots to accommodate door drop
- Silent operation: no humming or buzzing
- Dual voltage: site selectable 12 or 24 Vdc
- Hall-Effect status monitoring available on some models
- Standards: CE Approved & C-Tick Certified





# Electric Strike

Electric Strikes are common with electro mechanical door systems. They are characterised by speed, durability and longevity. The ASSA ABLOY line of electric strikes is suitable for a variety of applications.

## 1006 Series

### Description

- Metal Wood
- Dual voltage 12VDC or 24VDC continuous duty
- Stainless steel construction
- Tamper resistant & Plug-in connector
- Fail secure (standard)
- Endurance 1,000,000 cycles
- Static strength 2,500 lbs. (fail secure)
- Full keeper shims for horizontal adjustment
- Dynamic strength 350 ft-lbs. (fail secure)
- Non-handed & Trim enhancer
- Dual voltage 12 or 24 VDC continuous duty
- Internally mounted solenoid



## 7400 Series

### Description

- Clear Anodized Finish & Aluminum construction
- Fail-Safe/Fail-Secure configurations
- Field selectable to match power source of 12, 16, or 24 VDC
- Case: 85.6mm x 36mm x 27mm. Zinc aluminium alloy
- Strike Opening: 36.5mm x 15.9mm (adjustable) x 12.7mm
- Retrofits all previous Adams Rite strikes
- Faceplate: Flat and radius aluminium: 123.7mm x 31.8mm
- Single solenoid operates at 12/24V DC
- Opens electrically with over 15kg of sideload pressure
- 1080kg holding force
- Tested to 500,000 cycles
- Standards: ANSI/BHMA 156.5 Grade 1 UL listed for burglary resistance



# Electric Strike

## 934U Series

### Description

- For tempered glass doors with wooden, Aluminium or metal frames
- No preparation required to the glass
- Dual voltage 12-24V DC
- Fully reversible
- Thickness adjustable 9-12mm (13-15mm available to special order)
- Fail-locked and fail-unlocked version
- Vertical and horizontal mounting possible
- Break-in resistance of 3700 N
- Adjustable keeper (FF, FaFix®) & Adjustable electric strike (F, Fix®)



## ES9000 Series

### Description

- Operates under pre load up to 25kg
- Field selectable fail safe/fail secure
- Multi voltage 10-30Vdc
- 1300kg holding force
- 2.5 million cycles endurance rating
- Latch keeper is significantly quieter in operation
- Weather resistant (IP54 rated)
- Non handed
- Designed and made in Australia
- 5 Year Warranty
- Suitable for use on high traffic doors



# Electrified Mortise Lockset

Electromechanical Mortise Locks are suitable for high-security applications for standard, narrow profile and modular doors. They are designed to handle single opening, stand-alone applications, or can be readily integrated into sophisticated access control systems.

## 8200 Series

### Description

- Patented design and construction
- Heavy duty lever-style mortise lock
- Available in 60 different functions, including electromechanical, security and monitoring
- Dual Voltage 12 to 24VDC system
- Integrated with stand-alone applications or as part of an access control system
- Grade 1; UL listed at 16 million cycles; ADA compliant
- Field reversible without opening lock case
- Backset: 2-3/4", Strike: 4-7/8" ANSI, Door thickness: 1-3/4" standard; up to 6" available
- Tested on fire door assemblies for upto 3 hours
- 10 year warranty



# Electrified Mortise Lockset

## 3570 Series

### Description

- Fail safe/fail secure configuration.
- 60mm standard, 89 & 127mm Backsets available
- 32 to 50mm Door thickness
- Multi-voltage - will work on 12-24 Vdc systems.
- Handing - left hand and right-hand doors
- Selection of free lever or locked lever on both sides of the door
- Key override monitoring either side of the door
- Monitoring includes Dead latched and Locked,
- Door position/Reed switch
- Request to exit/REX
- LED indication
- SL8 & D8 Australian Lock Standard



## 3782 Series

### Description

- Suitable for heavy duty use in industrial and commercial buildings
- 23mm, 25.4mm, 30mm and 38mm backset available
- Suits metal door thickness 35-50 mm
- Easy red/green function setting
- All lock settings are made from under the faceplate allowing for simple in-door configuration
- Standard primary locks include holdback and anti-lockout capabilities
- Improved cylinder functions including lock/unlock and retract latch as standard
- Electric Strike compatibility
- Operated by key or handle outside or by turns nib, key or handle inside.
- Compatible to most restricted keying systems.
- Finished in stainless steel



# Handle Controlled Electrified Lockset

Abloy's handle controlled electrified locks offer compatibility, flexibility without compromising on security or fire escape safety.

They offer dual control - electronic for outside handles and manual for inside handles and keys - for enhanced security and flexibility in various buildings, which makes them an ideal solution for medium traffic areas.

## EL560 Series

### Description

- Best suited for medium traffic doors
- 12/24Vdc fail safe/fail secure
- Suitable for wooden, metal or fire rated doors
- Outside handle controlled
- Inside handle always allows egress
- Key override always
- Easily reversible trigger bolt, to suit door handling
- Deadbolt and anti-friction bolt deadlock when door closes
- Can be integrated Access control Systems
- Conforms to En179



## EL460 Series

### Description

- Suitable for Narrow stile doors & Wooden Doors
- Handle-Controlled bolt retraction
- Electric anti-tampering
- Mechanical automatic deadlocking
- Reversible handing, left/right
- Burglary-resistant, due to dead bolt with 20 mm throw
- Exit function from inside handle
- Suitable for fire-rated doors
- Mechanical override with cylinder
- Free egress from inside handle and Back-up function included
- Monitoring functions includes Door status, handle down, Bolt deadlocked, Bolt in, Key cylinder used, Sabotage loop
- EN 1125 Standard



# Motorized Bolt Retraction Lockset

ABLOY Motor locks are best suited in high traffic doors, especially in situations where the advantages of motor powered unlocking have to be combined with the mechanical security requirements

The bolt is retracted by an electric motor and pretensioned by a spring mechanism. When the door is closed, the control latch ensures that the pre-tensioned bolt is fully extended and the double action latch blocked which also improves the level of security obtained.

## EL520 Series

### Description

- Motorized bolt traction for push & pull and door automatics use
- Electric anti-tampering: if Deadbolt is thrown out when door is not closed, it is withdrawn automatically.
- Mechanical automatic locking system
- Non handed, left / right
- Burglary-resistant due to dead bolt with 20mm throw
- Exit function by inside handle
- Suitable for fire rated doors
- Mechanical override with cylinder
- Back-up function for emergency access
- Monitoring functions - Door status, handle down, Bolt deadlocked, Bolt in, Key cylinder used, Sabotage loop
- EN 14846, EN 179, EN 1125 Standards



## EL420 Series

### Description

- Suitable for Narrow stile doors & Wooden Doors
- Motorized bolt traction for push & pull and door automatics use
- Electric anti-tampering
- Mechanical automatic deadlocking
- Reversible handing, left/right
- Burglary-resistant, due to dead bolt with 20 mm throw
- Exit function from inside handle
- Suitable for fire-rated doors
- Mechanical override with cylinder
- Free egress from inside handle and Back-up function included
- Monitoring functions includes Door status, handle down, Bolt deadlocked, Bolt in, Key cylinder used, Sabotage loop
- EN 1125 Standard





## Motorized Multipoint Lockset

High security locks MP520, MP522 are used in environments where convenience, higher security or high durability is needed. Two auxiliary locks with hook bolts offer even higher security level, in case of requirement. The integrated monitoring contacts from the lock can be connected to the different systems.

Deadbolt and hook bolts are withdrawn inside the lockcase by motor and double action latch is released, when electrical control is on. Door is opened from outside by using door pull. When door closes, dead bolt and hook bolts are thrown out automatically, double action latch is blocked and the lock case is secured in four points.

### MP520 Series

#### Description

- Best suited for high traffic doors
- Motorized bolt traction for push&pull
- Day/night mode
- Mechanical automatic locking system
- Non handed, left / right
- Burglary-resistant due to dead bolt with 20 mm throw and auxiliary hook bolts
- Exit function by inside handle
- Suitable for fire doors
- Mechanical override with cylinder
- Monitoring functions includes Door status, handle down, Bolt deadlocked, Bolt in, Key cylinder used, Sabotage loop
- EN 179, EN 1125 Standards



## ABLOY for Trust



# V-Lock & Gate Lock

The unique and popular Lockwood / Trimec ES8000 V-Lock has been completely redesigned and engineered to produce the new ES8100 V-Lock

## V-Lock

### Description

- Unlocks under a Pre-Load of up to 100kg in 3-wire mode, 15kg in 2-wire mode
- Locks under a Pre-Load of 20kg (12W) and 35kg (24W)
- 1000kg Holding Force
- IP53 rated for external door applications
- Door Position and Lock Status Monitoring
- On-Board visual Lock Status indication and diagnostics LED
- Easy, one-step, Fail Safe (PTL) and Fail Secure (PTO) field selection
- Operating voltage: 11.4 - 26VDC
- Durability tested to 500,000 cycles (120N unlocking, 50N locking)



Heavy duty GL 1 Gate Lock is designed for electronic access control of different gate application where high security and weather resistant solution is imperative. The Gate lock works on electrical or manually operated, indoor or outdoor gates, and is ideal for either swinging or sliding gated applications (vehicle, pedestrian or stock gate.)

## Gate Lock

### Description

- 2,000 lbs holding force
- Operates under preload up to 100 lbs
- Automatic dual voltage - no field adjustment required
- Accepts a standard mortise cylinder for manual key override
- Available in both fail safe and fail secure mode



# Cabinet Lock & Auxiliary Strike

The microcabinet lock can be installed on drawers, cabinets and other small doors; swinging or sliding

## Cabinet Lock

### Description

- Fail Safe/Fail Secure Field interchangeable
- Holding Force - 100kg
- Monitored Option
- Can be used for additional switching function



The Auxiliary Locking system integrates an electric strike and magnetic counterpart within the door leaf and frame. Unlike typical electromagnetic locks, its magnetic bolt remains enclosed until the door fully closes, resulting in smooth, flush surfaces eliminating the need for altering the door frame edges.

## Auxiliary Strike

### Description

- Holding force: 600 lbs
- Universal installation position, vertical and horizontal
- Aesthetically appealing concealed installation with silent operation
- Low opening force due to weak latch bolt spring
- Latch insertion on the door frame removed
- Load cycles tested for 1 million cycles



# Electrified Panic Exit Device



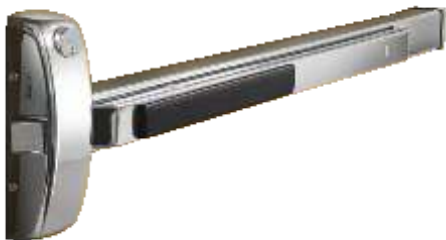
# Electrified Panic Exit Device

The Sargent 8800 Series is specifically crafted for wide stile applications, prioritizing smooth, quiet operation along with robust security. It's well-suited for aluminum, metal, and wood doors, including single full-glass installations. Designed for standard width stile applications on wood and metal doors, the 8800 Series features a rim bolt that seamlessly combines quiet operation with solid security. It's an excellent choice for schools, offices, and hospitals, catering to both single door and double door setups with mullions.

## 8800 Series

### Description

- ANSI/BHMA Grade 1
- UL Fire and Panic listed
- 5 million cycles tested
- Single or double door applications
- Available with Studio Collection decorative levers and 13 architectural finishes
- Available with Microshield® antimicrobial coating



The FLUID Series from Lockwood combines ergonomics and performance to ensure both safety and efficiency. Durability tested up to 1,000,000 cycles, auxiliary bolt activation from just 1mm, and effortless opening requiring less than 20N force, while also providing vandal resistance and simplified installation with its new fixing bracket and template design. Compliant with Australian Standard AS1905.1-2005 for Fire Resistant Doorsets and CE EN1125-2008 standards, the FLUID Series guarantees easy evacuation in emergency situations

## Fluid Series

### Description

- High level of resistance. Up to 500kg to each latching point.
- Available in both vertical and horizontal latching positions in 2/3-point configurations
- Bar can be cut down to 350mm



**SARGENT**  
ASSA ABLOY

**LOCKWOOD**  
ASSA ABLOY



# Access Control Accessories

## Touchless Exit Switch

### Description

Wave Sense Switch features a new class of motion sensing technology using Doppler Radar for contactless switch activation. Pulse mode to initiate toggle mode to provide on/off switch. Adjustable sensing zone 4" to 24" The wave exit switch is water resistant, has lifetime warranty and available in a single gang or double gang faceplate options.



## Push Button

### Description

Specially designed push button used on fire doors, gates or anywhere there is an access control system. Wide range of options such as push button size, colour, electronic/ pneumatic timers, LEDs, narrow stile, single or double gang wall plates are available.



## Power Supply

### Description

Securitron has a wide range of Switching Access Control Power Supplies to protect and enhance the performance of any electrified door opening. The AQL Series of switching power supplies are dual voltage, UL listed plus multi-voltage and network monitoring ready. These unit are field selectable with a dedicated fast battery charger. They provide 4 Amp @12VDC or 3 Amp at 24 VDC and are expandable up to 16 outputs.



# Access Control Accessories

## Mortise Key switch

### Description

Securitron Keyswitch supports electric lock control, alarm panel arming, reset and override when paired with ANSI mortise cylinder. Momentary or alternative switch with SPDT or DPDT relay. 32mm or 28mm mortise cylinder with option of patented keyway



## Electromagnetic Door Holder

### Description

Rixson offers a wide range of electromagnetic door holders/releases with features like Wall Mount, Adjustable Armature, Concealed Wiring and ANSI/C00011 Certified available. Designed for vitrually any remote door release application, electromagnetic door holders/releases primarily hold fire doors open until released by an alarm or smoke detector.



## Concealed Cable Loop

### Description

Concealed door loop or lead cover ensures the safe passage of cables, preventing damage and maintaining a tidy appearance. When the door opens beyond 120° or when there's a distance of more than 20 mm between the hinge and the door frame, it's recommended to use the longer lead cover



ASSA ABLOY Group is the global leader in access solutions. Every day, we help billions of people experience a more open world.

**ASSA ABLOY**

ASSA ABLOY Opening Solutions leads the development within door openings and products for access solutions in homes, business and institutions. Our offering includes doors, door and window hardware, locks, access control and service.

**[assaabloy.com](https://assaabloy.com)**

## **MUMBAI**

EcoStar, 11<sup>th</sup> Floor, 1101 / 1105,  
Off Aarey Road, Vishweshwar Nagar  
Goregoan (East),  
Mumbai - 400063,

## **PUNE**

Sr. No.36, Hissa No.1, Plot No.11,  
Village Pisoli Haveli Kondhwa,  
Pune - 411 028,  
Maharashtra

## **GURUGRAM**

1&2, ENCO Co-working Space,  
6th Floor, Enkay Tower,  
Udyog Vihar, Phase – 5,  
Gurugram -122016, Haryana

## **BENGALURU**

#36/2, Fourth Floor,  
JRR Towers, Near South-end Circle,  
Basavanagudi,  
Bengaluru-560 004, Karnataka

## **HYDERABAD**

2nd Floor, Alcazar Mall,  
Plot No. 497/498,  
Road No. 36, Jubilee Hills,  
Hyderabad-500 033, Telangana

## **CHENNAI**

23-2, Old No 39-2, Cenotaph Road,  
1st Lane, Near to Crown Plaza Hotel,  
Opp Canara Bank, Teynampet,  
Chennai-600 018