



Floor Spring

A floor spring, also known as a floor hinge or floor closer, is a type of door hardware installed in the floor beneath a door to control its opening and closing motion. It consists of a spring mechanism housed in a metal casing, along with hydraulic or pneumatic components that regulate the speed and force of the door. Floor springs are concealed beneath the floor surface, providing a sleek and unobtrusive appearance while ensuring smooth and controlled door operation.

Floor Spring

DC 475

Floor Spring with
Cam Motion®
technology and
adjustable closing
force for large or very
heavy doors

Model no.: DC 475

- Floor spring with adjustable closing force for large and very heavy doors
- In compliance with EN1154 size EN3-6
- 1,000,000 cycles tested
- Suitable for fire and smoke protection doors
- For single and double action door up to 300kg

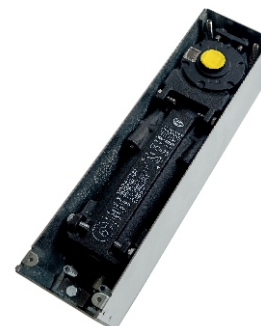
Characteristics of DC475

- Closing from 175° in both door swing directions with hydraulic control from 175°
- Two thermodynamic valves for consistent performance
- Adjustable door speed and latching speed through top regulating valves
- Back-check
- Cast Iron body
- Adjustments in all directions within the cement box
- Cement box is hot zinc plated
- Cover plates and eyelets made in polished or Satin Stainless Steel and Polished Brass
- Interchangeable spindle from 0 to 30mm
- Available without hold-open or with hold-open angle 90° and 105°

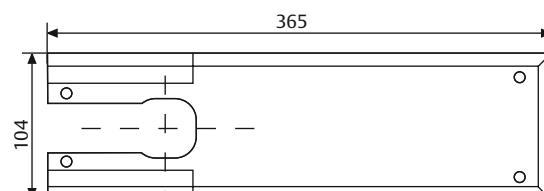
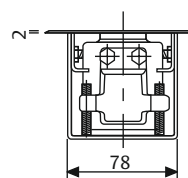
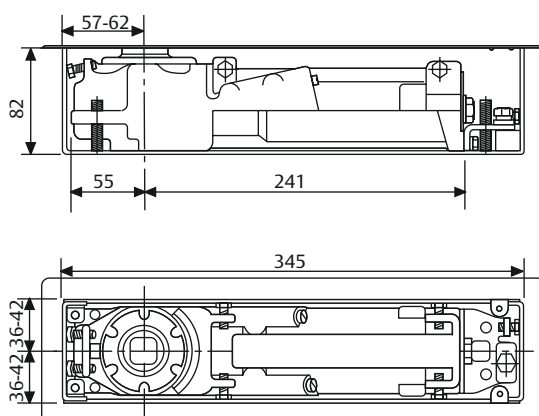
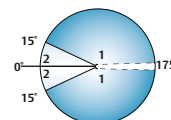
Speed adjustment:

1 variable closing speed 175° - 15°

2 variable latching speed 15° - 0°



CE	ASSA ABLOY Italia S.p.A. Via Bovaresa, 13 40017 San Giovanni in Persiceto Bologna - Italy			04		
	0425 DO.0663	EN 1154:1996+A1:2002	3	8	3/6	1 1 4



All dimensions are in mm

Floor Spring

DC 475

DC475 Technical details

Adjustable closing force closing force	EN 3-6
Door width up to	1400mm
Door weight up to	300 kg
Max. opening angle	175°
Closing speed	Variable between 175° - 15°
Latching speed	Variable between 15° - 0°
Back-check	Mechanical
Weight	7.3 Kg
Height	82 mm
Depth	345 mm
Length	78mm
Body adjustment within cement box	Vertical 9mm, side 6mm, front 5mm, angular 2°
DIN-direction	Left/Right-handed doors or double action
Hold-open mode	90°/105°/Non hold-open
In compliance with	EN1154
CE Marking for building products	Yes
Fire and smoke protection	Yes

Our service for you

Here you can see the individual advantages of our floor spring models for your respective fields of business.

The advantages at a glance:

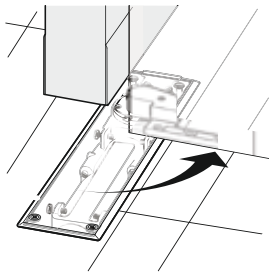
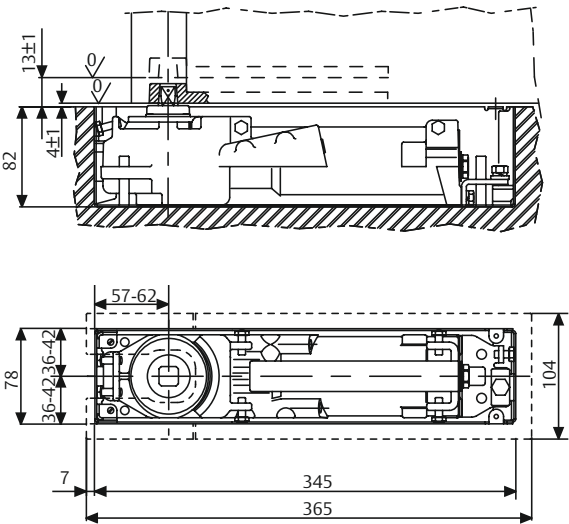
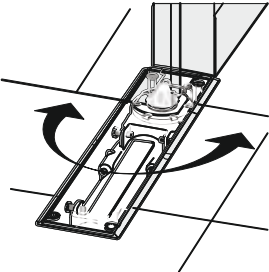
Customer segment	Advantages
Project planners	<ul style="list-style-type: none"> - Extensive range of uses: Fire and smoke protection doors as well as standard doors - Hold-open at 90°, 105° and non hold-open - Variety of available spindles: squared Italian, rectangular German - Architectural finishes: Cover plates and eyelets in Polished Satinless Steel Polished Brass
Builders	<ul style="list-style-type: none"> - Universal for left/right handed and double-action doors - Overpressure relief valve to protect unit against abuse - Large range of adjustment within cement box to solve possible alignment problems on the site without taking down the door
Trade	<ul style="list-style-type: none"> - Reduced inventory costs due to modular product range - One single product suitable for a large variety of mounting positions - Complementary accessories available for the whole product range
User	<ul style="list-style-type: none"> - Adjustable operating force to meet door construction requirements and user needs - Easier door opening and improved accessibility due to Cam Motion® technology - Back-check feature offers optimum protection for doors and walls

Floor Spring

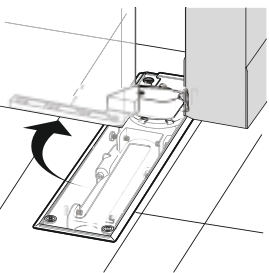
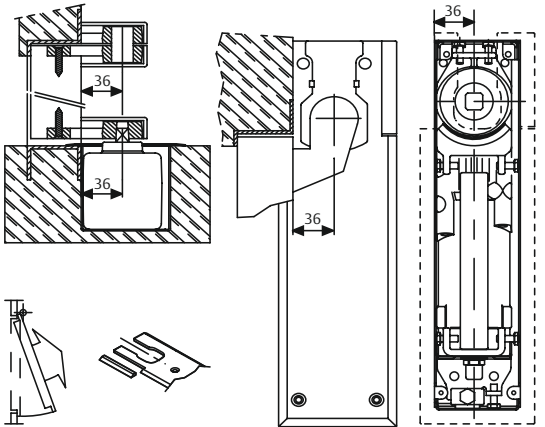
DC 475

Floor Spring
Dimensional
Drawing for
DC 475

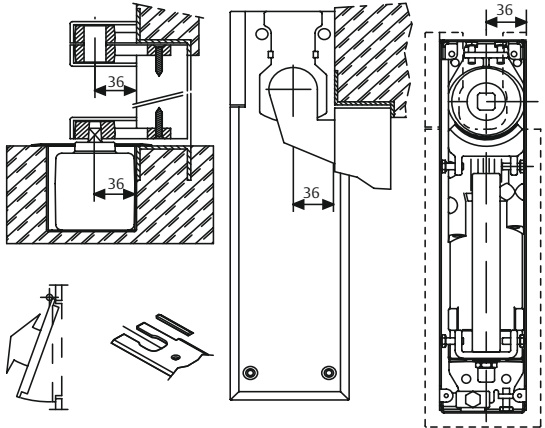
Double-action door mounting



Right-handed door mounting



Left-handed door mounting



Floor Spring

DC 475

Floor Spring Accessories for DC475

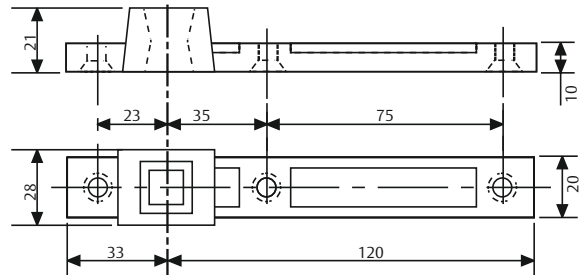
AC 269

Available in Satin
Satinless Steel, Polished
Satinless Steel and
Polished Brass.



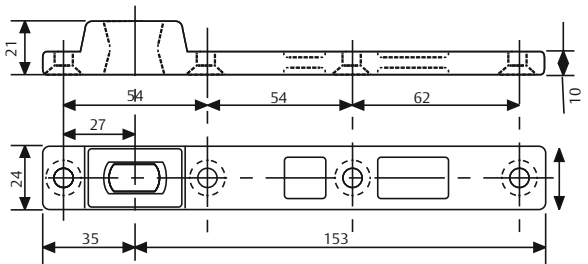
AC 115

Reversible bottom
arm in steel for double
action doors, socket for
Italian squared spindle



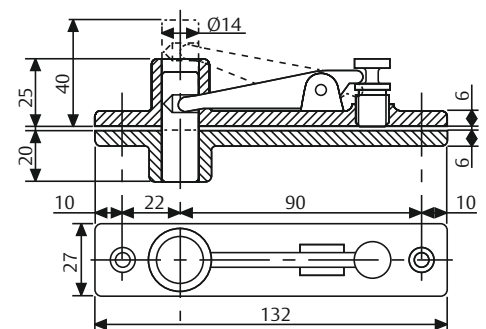
AC 393

Reversible bottom
arm in steel for double
action doors, socket for
German rectangular
spindle



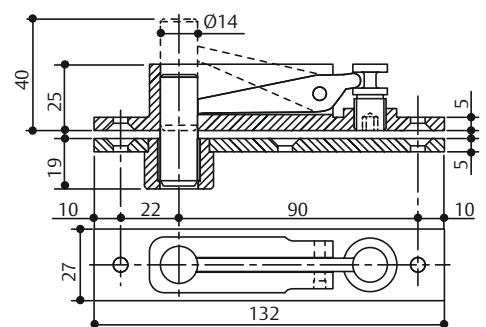
AC 8

Double action top pivot



AC375

Double action top pivot
in full steel with self
lubricating bushing



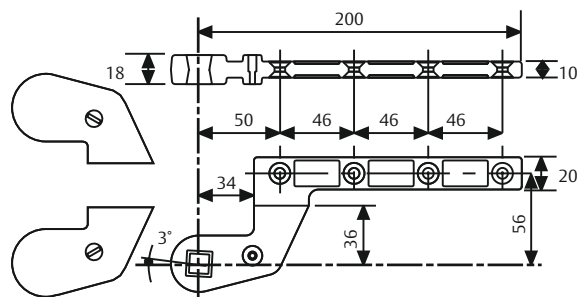
Floor Spring

DC 475

Floor Spring Accessories for DC475

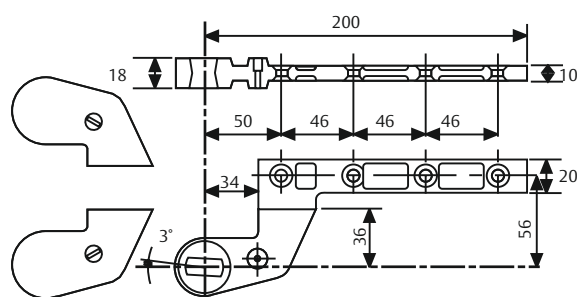
AC 583

Right and left bottom arm in steel for single-action doors, 36mm offset. Socket for italian squared spindle, Silver or Black painted,



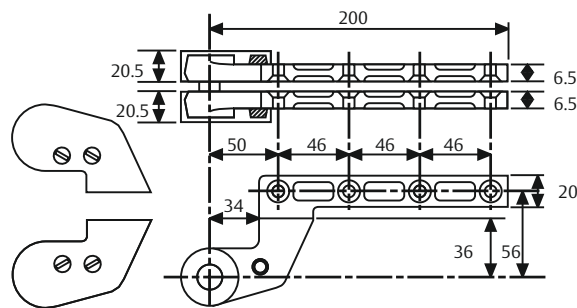
AC 392

Right and left bottom arm in steel for single action doors, 36mm offset, socket for German rectangular spindle, Silver and Black painted ABS covers.



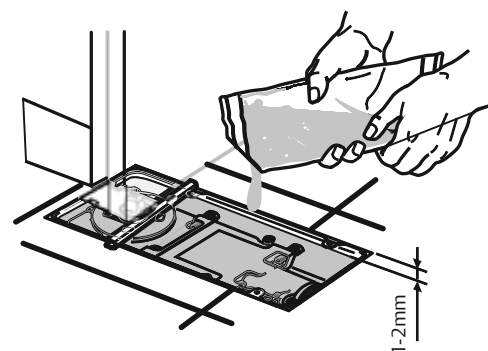
AC 384

Right and left top arm in full steel, 36mm offset with Silver or Black painted ABS cover.



AC612

Sealing compound for floor springs



Floor Spring

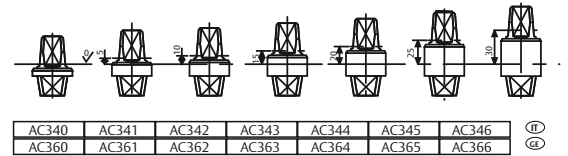
DC 475

Floor Spring
Accessories and
order placement
information for
Dc475

Detachable spindles

Italian spindle - square
shape (left image)

German spindle - flate -
conical shape
(right image)



You can find the
complete specification
on the internet
at: www.assaabloy.com
under "Service"
in the support
section.

Specifications for DC475:

ASSA ABLOY Floor spring DC475 featuring
Cam Motion® technology is in compliance with
EN1154

- 1,000,000 cycles tested
- Closing power variable adjustable, size EN3-6,
for doors up to 1400mm wide
- Closing speed, latching speed adjustable
through top regulating valves
- CE approved
- 9mm height adjustable within cement box
- Suitable for left/right handed double-action
doors

Accessories:

- ☐ AC115 - Reversible bottom arm Italian spindle
- ☐ AC393 - Reversible bottom arm German spindle
- ☐ AC8 - Double action top pivot
- ☐ AC375 - Double action top pivot
- ☐ AC583 - Right and left bottom arm. Socket for
Italian square spindle.
- ☐ AC392 - Right & left bottom arm. Socket for
German rectangular spindle.
- ☐ AC384 - Top pivot for left or right doors
- ☐ AC612 - Sealing compound for floor springs
- ☐ AC269 - Cover plate for DC475

Colour:

- ☐ Polished Satinless Steel
- ☐ Satin Satinless Steel
- ☐ Polished Brass