



## Floor Spring

A floor spring, also known as a floor hinge or floor closer, is a type of door hardware installed in the floor beneath a door to control its opening and closing motion. It consists of a spring mechanism housed in a metal casing, along with hydraulic or pneumatic components that regulate the speed and force of the door. Floor springs are concealed beneath the floor surface, providing a sleek and unobtrusive appearance while ensuring smooth and controlled door operation.

# Floor Spring

## AF 224P

### Floor Spring AF-224P

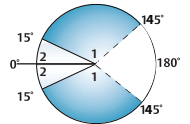
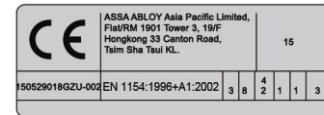
**Model no.:** AF-224P

- Floor spring with adjustable closing force for very thin slab
- Certified En1154, size EN2-4
- 5,000,000 cycles tested
- Suitable for fire and smoke protection doors
- Maximum door weight 150kg

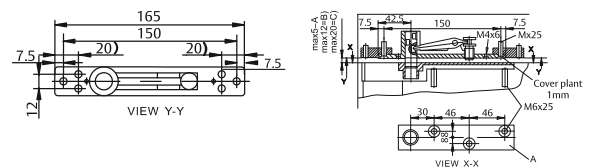


### Characteristics of AF-200F

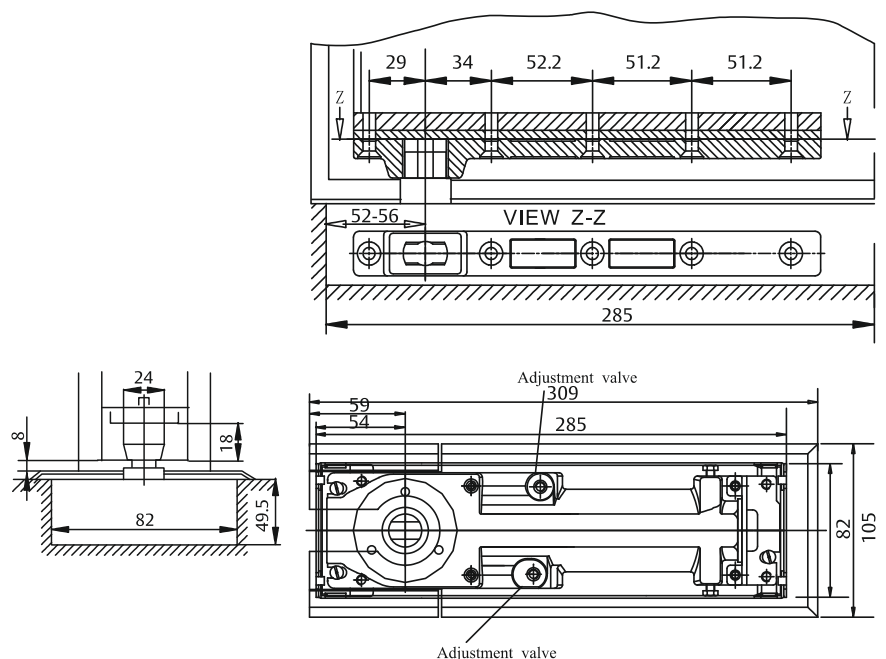
- CE Mark product
- Easy installation with thin body design
- Closing speed adjustable (1) - 145° - 15°
- Latching speed (2) - 15° - 0°
- Standard 90° hold-open, optional - Non hold-open
- Maximum door weight 150kg
- Suitable for wooden/glass/Aluminium profile doors application
- Body adjustable inside cement box with height up to 4mm, width up to 4mm, length up to 4mm



### Top of door frame



### Bottom of door frame



All dimensions are in mm

# Floor Spring

## AF 224P

### AF-224P

#### Technical details

Adjustable closing force closing force	EN 2-4
Door width up to	850mm - 1100mm
Door weight up to	150 kg
Max. opening angle	145°
Closing speed	Variable between 145° - 15°
Latching speed	Variable between 15° - 0°
Back-check	No
Height	49.5 mm
Length	319mm
Width	82mm
Body adjustment within cement box	Body adjustable inside cement box with height up tp 4mm, width up to 4mm, length up to 4mm
DIN-direction	Left/Right-handed doors or double action
Hold-open mode	90° Non hold-open
In compliance with	EN1154
CE Marking for building products	Yes
Fire and smoke protection	Yes

### Our service for you

Here you can see the individual advantages of our floor spring models for your respective fields of business.

#### The advantages at a glance:

Customer segment	Advantages
Project planners	<ul style="list-style-type: none"><li>- Extensive range of uses: Fire and smoke protection doors as well as standard doors</li><li>- Particularly suitable in case of double-action glass doors</li><li>- Recommended for thin slabs</li><li>- Hold-open at 90° and non hold-open</li><li>- Available with high quality rectangular German spindle</li><li>- Architectural finishes: Satin Satinless Steel</li></ul>
Builders	<ul style="list-style-type: none"><li>- Universal for left/right handed and double-action doors</li></ul>
Trade	<ul style="list-style-type: none"><li>- Large range of adjustment within cement box to solve possible alignment problems on the site without taking down the door</li><li>- Reduced inventory costs due to modular product range</li></ul>
User	<ul style="list-style-type: none"><li>- One single product suitable for a large variety of mounting positions</li><li>- Complementary accessories available for the whole product range</li></ul>
	<ul style="list-style-type: none"><li>- Easier door opening and improved accessibility due to Cam Motion® technology</li></ul>