



Serozzetta



SZC Range

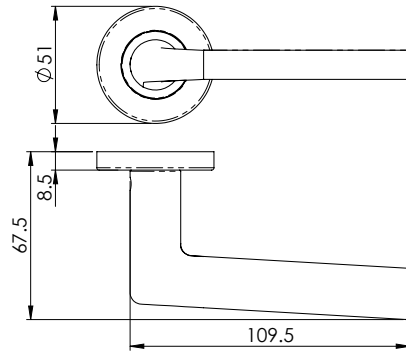


- ④ Face-fix levers on backplate
- ④ Levers on push-on-rose
- ④ Zinc lever range

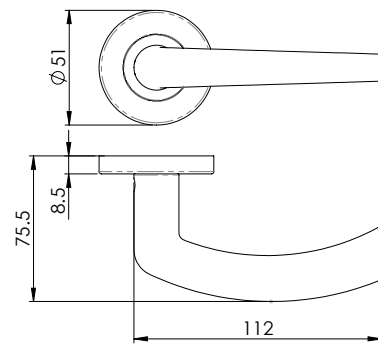




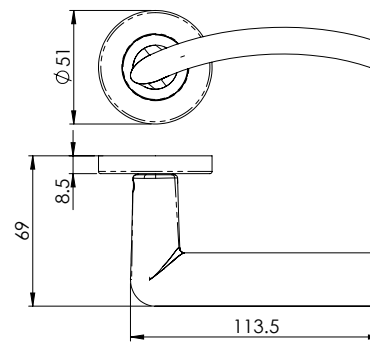
**SZC010**  
Uno



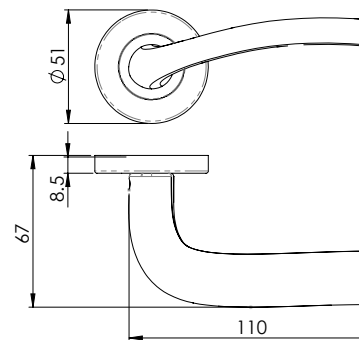
**SZC020**  
Dos



**SZC030**  
Tres

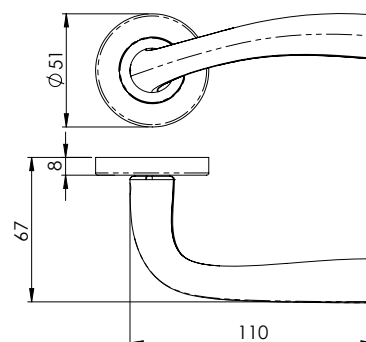


**SZC040**  
Cuatro

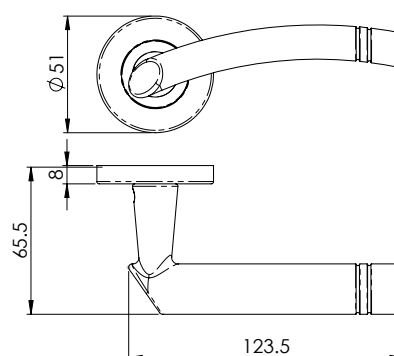




**SZC050**  
Cinco



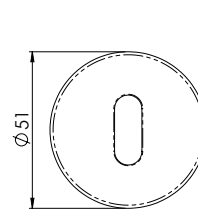
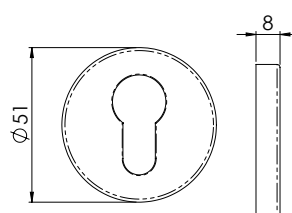
**SZC340**  
Cuarenta



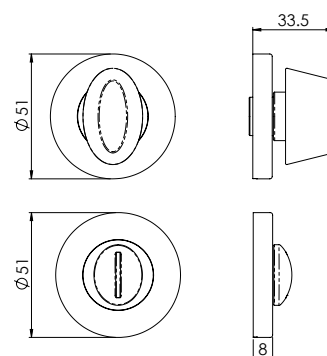
**SZC001**  
Euro Escutcheon



**SZC003**  
Lock Escutcheon



**SZC004**  
Thumbturn & Release





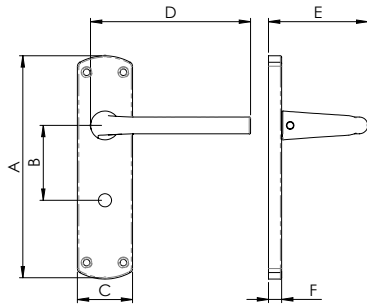
**SZC011Y**  
Uno on Euro Backplate



**SZC011**  
Lock

**SZC012**  
Latch

**SZC013**  
Bathroom



	A	B	C	D	E	F
<b>SZC011</b>	170	57	41.5	110	69	10
<b>SZC011Y</b>	170	47.5	41.5	110	69	10
<b>SZC012</b>	170	-	41.5	110	69	10
<b>SZC013</b>	170	57	41.5	110	69	10



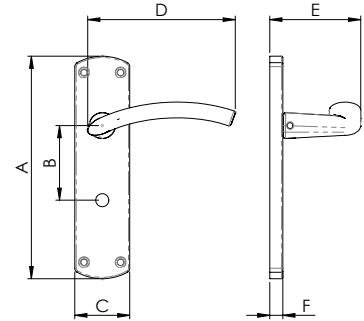
**SZC032**  
Tres on Latch Backplate



**SZC031Y**  
Euro

**SZC031**  
Lock

**SZC033**  
Bathroom



	A	B	C	D	E	F
<b>SZC031</b>	170	57	41.5	113	69	10
<b>SZC031Y</b>	170	47.5	41.5	113	69	10
<b>SZC032</b>	170	-	41.5	113	69	10
<b>SZC033</b>	170	57	41.5	113	69	10



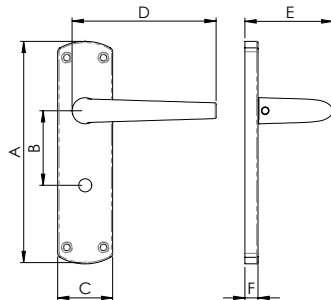
**SZC023**  
Dos on Bathroom Backplate



**SZC021**  
Lock

**SZC021Y**  
Euro

**SZC022**  
Latch



	A	B	C	D	E	F
<b>SZC021</b>	170	57	41.5	112.5	75.5	10
<b>SZC021Y</b>	170	47.5	41.5	112.5	75.5	10
<b>SZC022</b>	170	-	41.5	112.5	75.5	10
<b>SZC023</b>	170	57	41.5	112.5	75.5	10



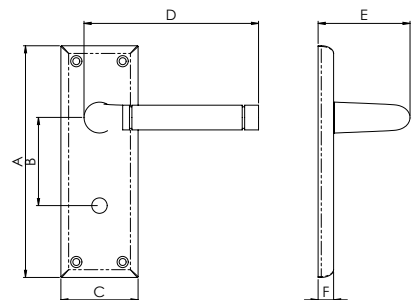
**SZC042**  
Cuatro on Latch Backplate



**SZC041**  
Lock

**SZC041Y**  
Euro

**SZC043**  
Bathroom



	A	B	C	D	E	F
<b>SZC041</b>	170	57	41.5	110	69	10
<b>SZC041Y</b>	170	47.5	41.5	110	69	10
<b>SZC042</b>	170	-	41.5	110	69	10
<b>SZC043</b>	170	57	41.5	110	69	10



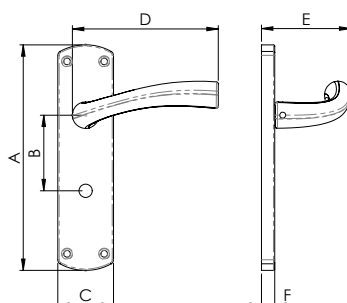
**SZC053**  
Cinco on Bathroom Backplate



**SZC051**  
Lock

**SRC051Y**  
Euro

**SZC052**  
Latch



	A	B	C	D	E	F
<b>SZC051</b>	170	57	41.5	110	68.5	10
<b>SZC051Y</b>	170	47.5	41.5	110	68.5	10
<b>SZC052</b>	170	-	41.5	110	68.5	10
<b>SZC053</b>	170	57	41.5	110	68.5	10



## We continue our Planet Mark journey...



Continuing our packaging project to eliminate plastic, improve recyclability, and reduce packaging sizes. In turn reducing the number of containers we ship.



Migrating our company vehicles to EV and hybrid models, as well as installing on-site charging points.



Switching to North West Recycling we are diverting the majority of our waste from landfill.



Switching carriers to DPD, who are committed to rolling out all-electric delivery vehicles in 30 UK cities by the end of 2023.



Optimising our website performance to reduce the amount of CO2 emissions per-click.



Following a 10.4 % absolute reduction we will continue measuring carbon and social data to reduce emissions and achieve the UN Sustainable Development Goals.

[carlislebrass.com/sustainability](https://carlislebrass.com/sustainability)





# Empowering *CHANGE* for a brighter future



PlanetMark



## Packaging Reduction Initiative

Reducing the amount of plastic, packaging, and recyclable waste within door hardware sector is very important, along with reducing container shipment.

Example initiatives;

- Reducing size of individual boxes and outer cartons to suit product
- Removal of plastic within final distribution of products

Reducing size of individual boxes and outer cartons to suit highest volume stainless steel commercial lever range – reduced the individual boxes and outer cartons by 50%.

- Freed up 51 pallet spaces within a distribution centre
- Created more than 50% in shipping container space for stock orders
- Reduced the amount of cardboard to be recycled by contractors/end users

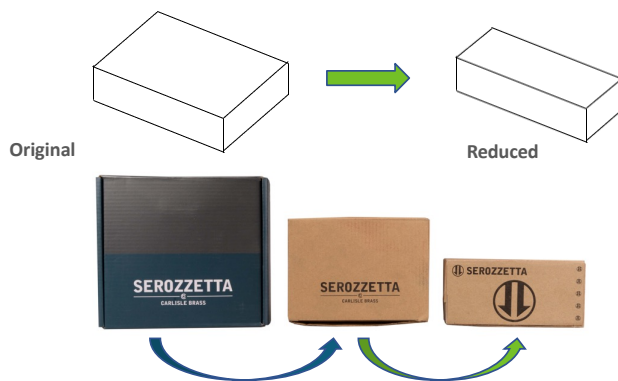
Removal of plastic within final distribution of products.

Introduced void fill machines, to replace the previously used plastic air pockets.

Paper gum parcel tape to replace the plastic parcel tape wherever possible, and pallet wrapping machines that only uses the exact amount to wrap the pallet.

Reducing size of individual boxes and outer cartons to suit product.

We aim to be plastic free and work back from here as a start:



- 50% smaller individual box size, and altered dimensions for outer boxes
- Reducing the amount of cardboard to be recycled by contractors/end users, reduce our waste and reduce our shipping costs – All going toward reducing our Footprint!

# Supply Chain Sustainability School

Since January 2018, Carlisle Brass were the first door hardware supplier in the industry to receive Gold recognition status by Supply Chain Sustainability School.

This recognition is a result of Carlisle Brass maintaining transparency within our supply chain and meeting all requirements on house builder’s supplier evaluation packs.

Carlisle Brass are unique to the industry, having two Lead Audit Assessors who assist with the ongoing development of suppliers and the Quality team within our group sourcing centre (AISC) in Ningbo. AISC also had an additional Lead Audit Assessor based in Ningbo.

We work closely with all our suppliers, dedicated to carrying out supplier evaluations, audits, pre-shipment inspections, and reporting on supplier KPIs.





SCAN ME

 **SEROZZETTA**  **EUROLITE**  **ALEXANDER & WILKS**  **EUROSPEC**  **MANITAL**

Carlisle Brass Ltd, Parkhouse Road, Carlisle, Cumbria, CA3 0JU

enquiries@carlislebrass.com | Sales: 01228 511030 | Reception: 01228 511770 | Company Registration Number: 2022858

carlislebrass.com