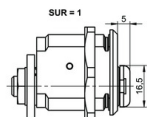
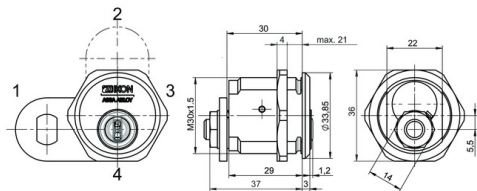
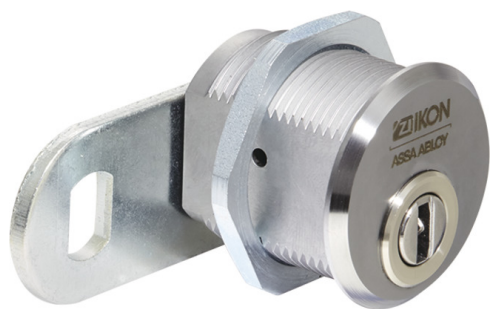


Locking lever cylinder eCLIQ N320,AUS=1

30 mm Diameter, laterally flattened to 22 mm -without key-

IKON
ASSA ABLOY



Product description

- Available as rotary secured or electronic version (V=)
- Brass cylinder housing components
- Standard finish, matt chrome-plated (OF=MC)
- Dimension in mm A, L, B: 38, 29, 21
- Fixing with M30x1.5 housing nut
- Standard locking lever (SLHB=1645009)
- Locking path and locking lever path 90° left or right
- Key withdrawal when locking lever is closed
- Maintenance-free for up to 200,000 cycles
- Splash-proof IP54
- Optionally available for use in potentially-explosive atmospheres in Zone 1 (ATEX=II 2G EX IB IIB T4 Gb)
- Dust and rain cover available (SUR=1) IP55

Scope of delivery

- 1 locking lever cylinder
- 1 housing nut M30 x 1.5 x 4
- 1 core nut, M8 x 0,75 x 3

Ordering Information

- Please include the desired locking path (SST=) in your order.

Variants that can be ordered

Article number	OF=	V=
N320,AUS=1	MC	D
	MC	E

