

Incedo™ EAC-M90

ASSA ABLOY
Opening Solutions

Access Controller
supporting OSDP Readers

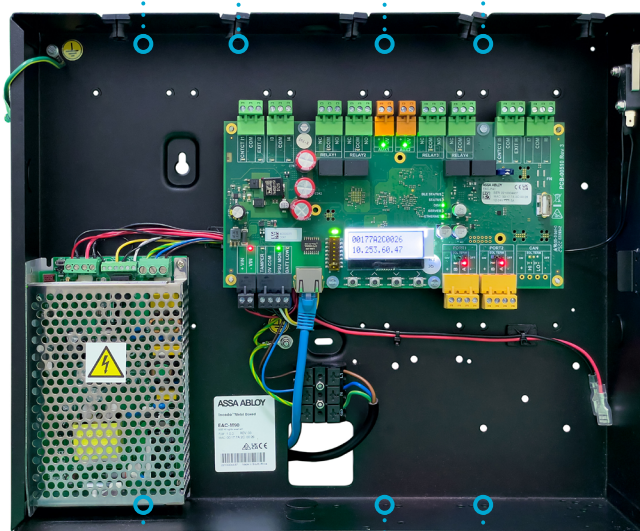
Experience a safer
and more open world

Plug and play hardware.

Easy to install and manage.

High level of security with
Seos® technology.

Information can be sent
to/from the credential.



OSDP Version 2.1.7
Reader support.

13.56 MHz, RFID tag
and card support.

2 door controller with read
in & out on both channels.



Offline enabled

Any of the Door readers can be configured to manage the Offline solution as part of a normal access attempt, so the security of your building and your assets are not compromised.



Secure


Controller has been designed to provide not only the highest level of security for your building by utilising HID's Seos® technology and OSDP Readers, but also to manage your ASSA ABLOY PULSE and Aperio Offline credentials.



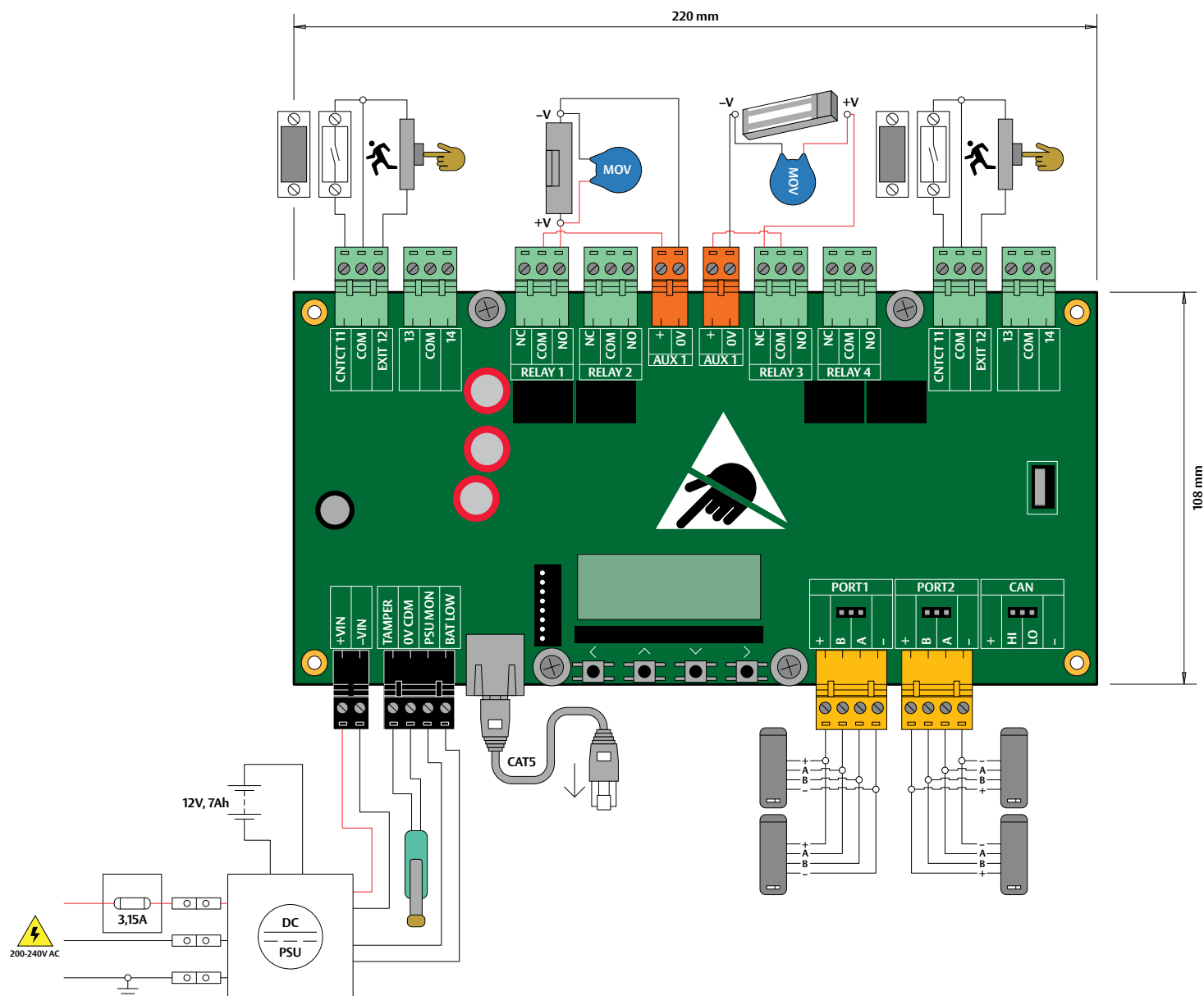
Convenience

Your employees or visitors will not realise that each time they present their credential to a reader to gain access, the system could also be collecting their event log, refreshing their revalidation period or amending their access permissions.

Incedo™ EAC-M90

Model name		Incedo Metal Box enclosure
①	Part number	EAC-M90
	Description	2 Door Controller with read In & Out on both channels
	Colour	Black
	Interface	HTTPS/ TCPIP
	Dimensions	8.2 cm × 38.3 cm × 31.3 cm
	Approximate product weight	4.3kg
	Material	Black powder-coated metal
	Internal power supply	
	Input voltage	200-240V AC (50/60Hz)
	Output voltage	10-13.8 VDC
	Maximum continous output current	5A (incl. 1A battery charging current)
((()))	System specifications	
	Processor	ARM Cortex A53
	Operating frequency	1.15 GHz
	Cores	4
	Memory	2GB RAM, 8GB eMMC 5.1
	Operating system	Linux
	Supported credential technology	
	Card compatibility	13.56 MHz RFID tag & card support
	Supported credential formats	H10302
	Incedo enabled credentials	Incedo 8K Seos card CRE-8KC Incedo 8K Seos token RDR-8KT Incedo RDR-8KC cards (Online only) PULSE keys: PK200_100000 – 1 key PK200_100005 – 5 key pack PK200_100020 – 20 key pack
	Reader connection method	OSDP (v2 compliant)
	Reader types	RDR-2PSO RDR-2PLO RDR-2NSO RDR-2NLO (Other readers not supported for Offline functionality)
	Environmental specifications	
	Operating temperature	-10°C up to 40°C
	Storage temperature	-20°C up to 60°C
	Operating humidity	20% up to 90% relative humidity, non-condensing
✓	Environmental rating	Environmental Class I (EN60839-11-2:2015)
	Certifications	
⊕	CE	Yes
	Other specifications	
	Buffered transfers	100,000
	Anti-tamper protection	Case mounted micro switch
	Battery support	12V, 7Ah lead acid battery approx. 65mm x 101mm x 151mm can be wired to unit with connection cables provided (separate not included with EAC-M90)

Example of wiring the EAC-M90 controller



ASSA ABLOY Opening Solutions EMEA

Digital and Access Solutions
Dukes Court
Dukes Street
Woking GU21 5BH
United Kingdom