



DC450

Technical Datasheet

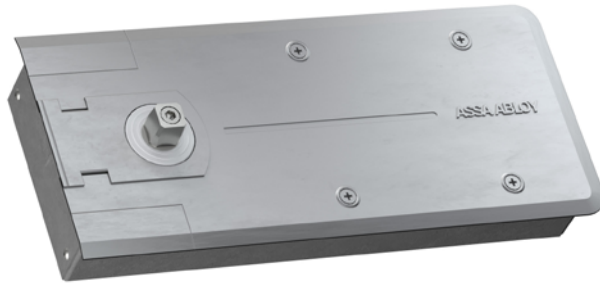
ASSA ABLOY
Opening Solutions

Floor spring with Cam-Motion® technology
for comfortable opening of double action doors

Experience a safer
and more open world

DC450

Floor spring with Cam-Motion® technology for single and double action doors, size 3/4



DC450 with Italian spindle, satin stainless steel

Cam-Motion® technology creates rapidly decreasing opening force without losing fire or smoke protection compliance

The DC450 with fixed closing force is suitable for shallow applications. Balancing building design and accessibility, ASSA ABLOY floor springs are minimal on the outside and powerful on the inside – ideal for double action doors made of any material, even glass. The rapidly decreasing opening force of Cam-Motion technology ensures doors open with less effort.

- Certified in compliance with EN 1154, size 3 or 4
- Suitable for fire and smoke protection doors (not for hold-open variants)
- For single and double action doors up to 1100 mm width and 120 kg weight
- Barrier-free according to CEN/TR 15894

Cover plate finishes

- Polished stainless steel
- Satin stainless steel

Features

- Hydraulic control from 130° in both door swing directions allows for smooth and controlled door operation
- Closing and latch speeds can be raised and lowered independently via top-facing valves
- Zinc plated cement box (only 40 mm high) allows for large adjustment range to fix any alignment problems without taking down the door
- Detachable spindle in different lengths (0-30 mm) and variants allows flexible installation
- Same dimensions for EN3 and EN4 products simplifies replacement
- Consistent performance in a wide range of temperatures

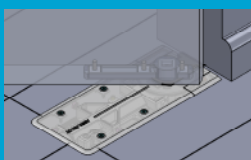
Product variants

- Hold-open at 105° (cannot be used on fire doors)
- Hold-open at 90° (cannot be used on fire doors)
- Without hold-open

Accessories

- **AC115** reversible bottom arm, Italian spindle
- **AC393** reversible bottom arm, German spindle
- **AC8** double action top pivot
- **AC118** double action top pivot, adjustable pivot point
- **AC375** double action top pivot, full steel, self-lubricating bushing
- **AC583** right and left bottom arm, socket for Italian square spindle
- **AC392** right and left bottom arm, socket for German rectangular spindle
- **AC384** top pivot for left- or right-handed doors
- **AC612** sealing compound for floor springs
- **CP619** cover plate

Versatile applications



Double action doors



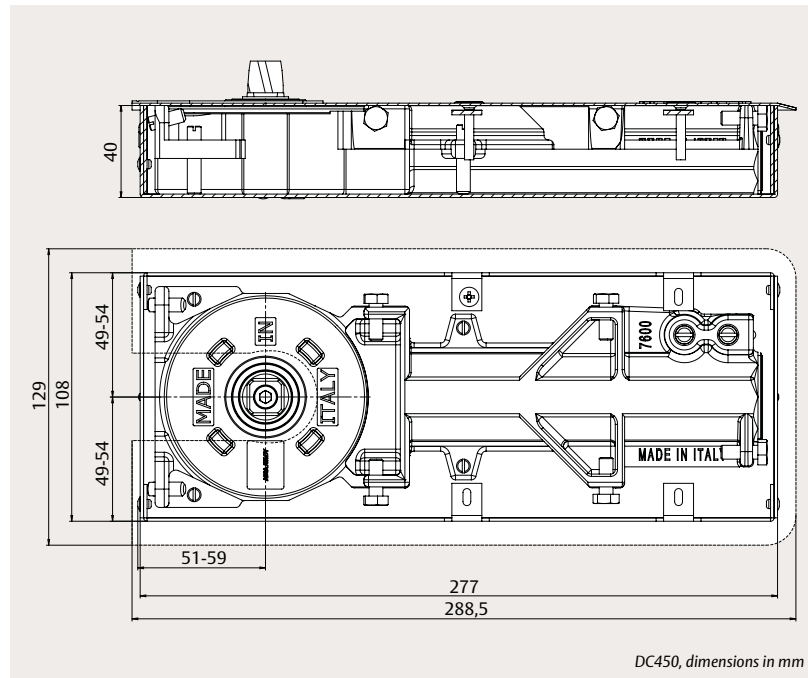
Left-handed doors



Right-handed doors

DC450

Technical attributes and certification



Technical attributes

| | |
|-----------------------------------|---|
| Closing force | EN size 3/4 |
| Maximum leaf width | 950 mm / 1100 mm |
| Maximum door weight | 120 kg |
| Closing speed (C) | Variable between 130° and 15° |
| Latch speed (L) | Variable between 15° and 0° |
| Hold-open mode | 105° / 90° / without hold-open |
| Maximum opening angle | ~130° |
| Handing | Left- / right-handed or double action |
| Force adjustment | No |
| Body adjustment within cement box | 2 mm vertical 10 mm side 7 mm front 2° angle |
| Hinge distance | 49 – 54 mm |
| Corrosion resistance | Grade 4 (240 hours) |
| Dimensions (H x D x L) | 40 x 108 x 277 mm |



Visit assaabloy.com to download all relevant product literature



Certification and testing

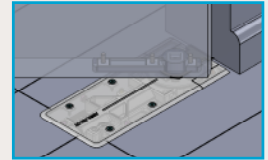
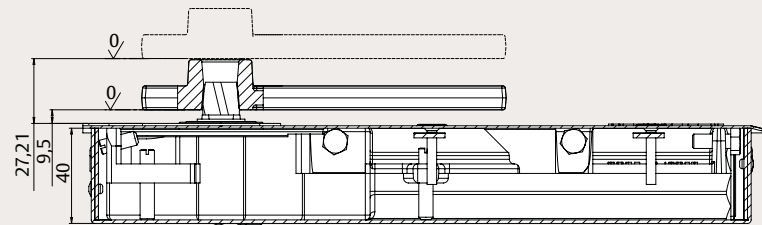
| | |
|--|-------------------------|
| Certified in compliance with | EN 1154 |
| CE classification | 3 8 3/4 1 1 4 |
| CE / UKCA mark | Yes |
| Suitable for fire and smoke protection doors | Yes |
| Barrier-free according to | CEN/TR 15894 |
| Third-party verified EPD | ISO 14025, EN 15804 |



DC450

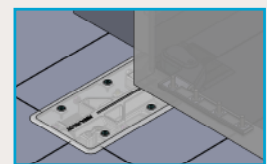
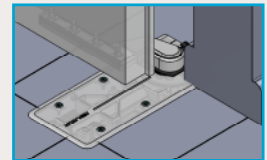
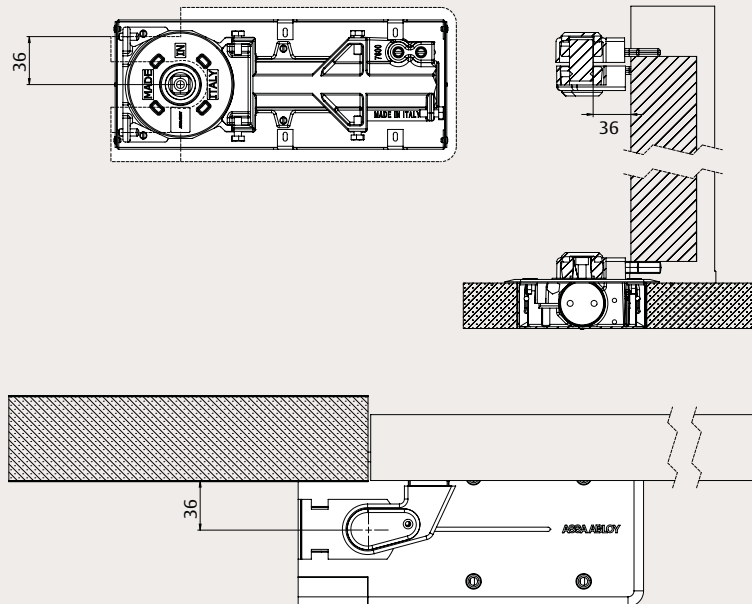
Mounting dimensions and accessories

Mounting on double action doors

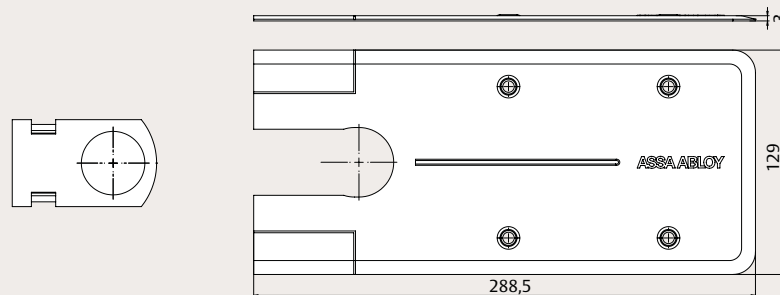


Mounting on left- / right-handed doors

The drawing shows mounting on a left-handed door. For right-handed doors it is the reverse.



CP619 cover plate for DC450

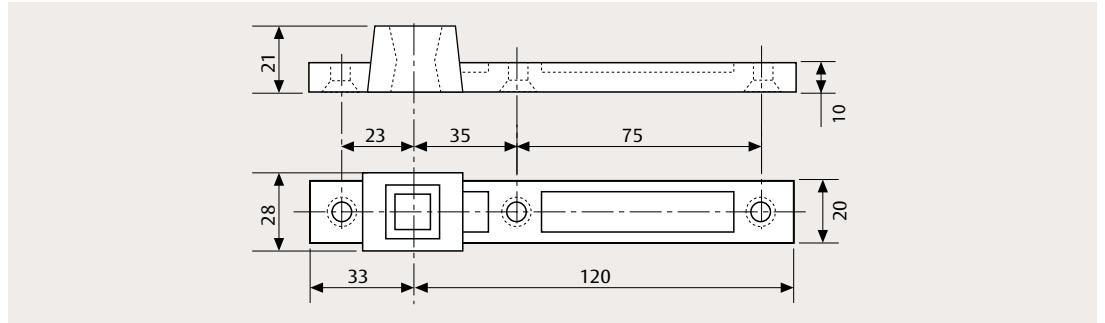


DC450

Accessories

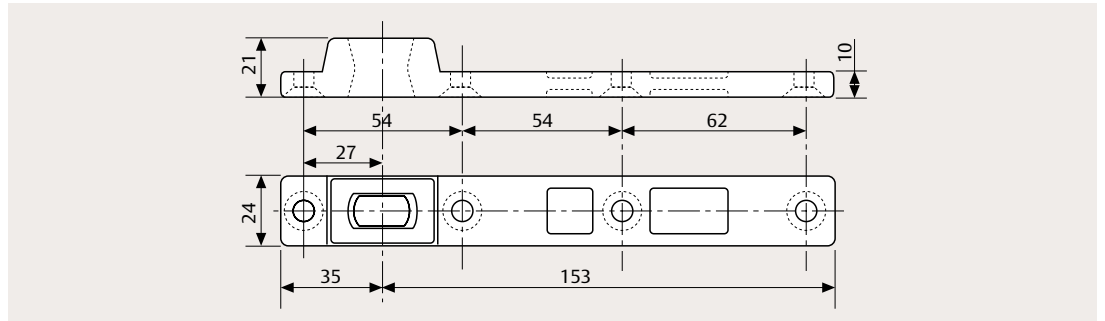
AC115 reversible bottom arm

for double action doors;
socket for Italian squared
spindle



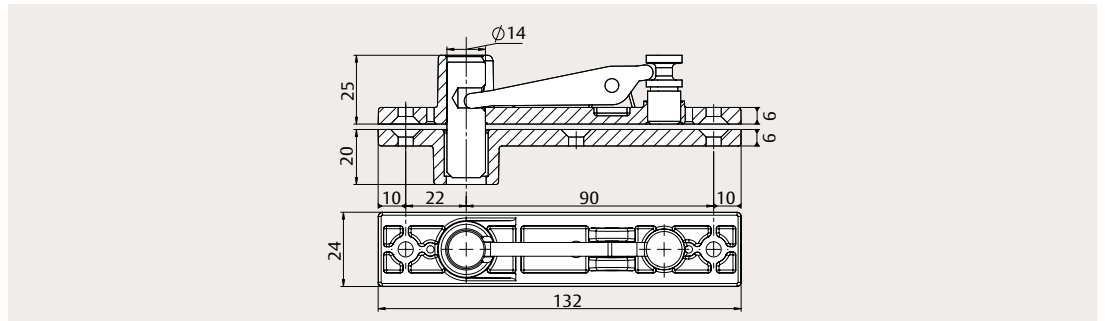
AC393 reversible bottom arm

for double action doors;
socket for German
rectangular spindle



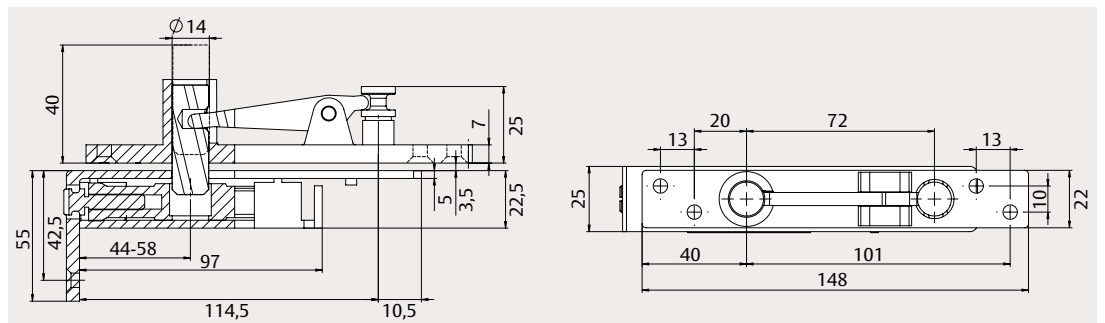
AC8 top pivot

for double action doors



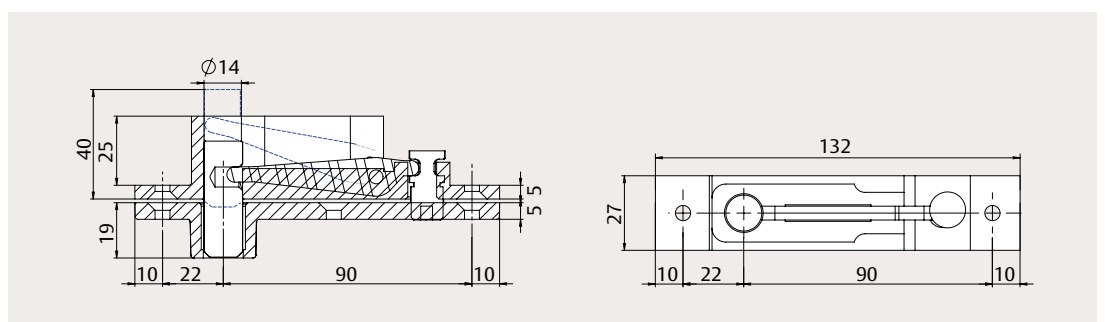
AC118 top pivot

for double action doors;
adjustable pivot point



A375 top pivot

for double action doors;
self-lubricating bushing

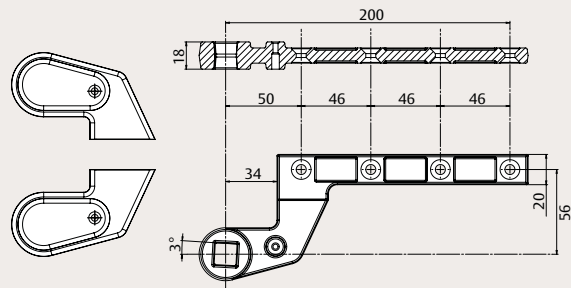


DC450

Accessories

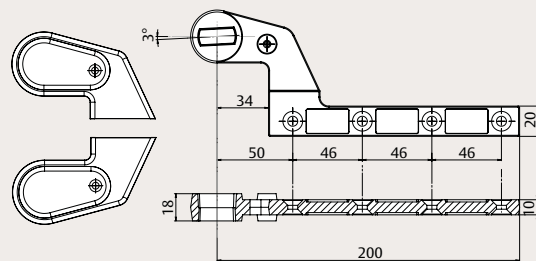
AC583 right and left bottom arm

for single action doors,
36 mm offset; socket for
Italian square spindle



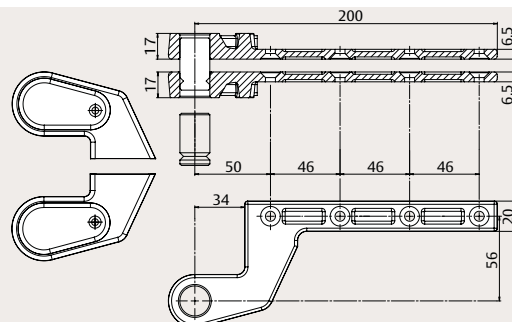
AC392 right and left bottom arm

for single action doors,
36 mm offset; socket
for German rectangular
spindle



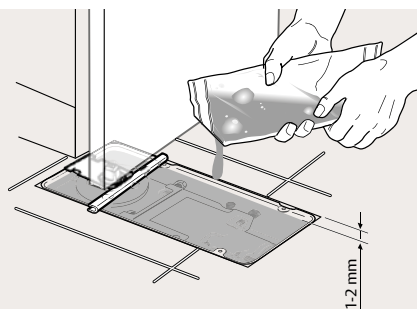
AC384 right and left top arm

for single action doors,
36 mm offset



AC612 sealing compound

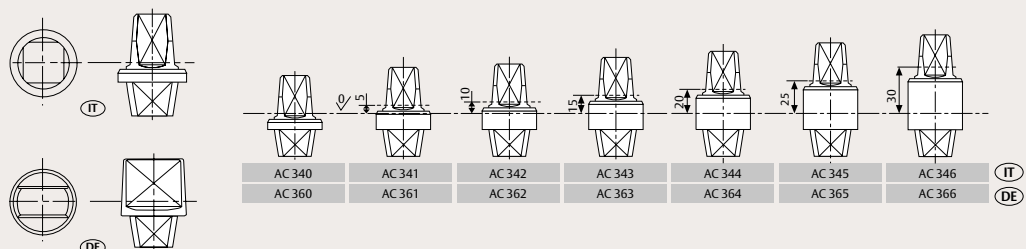
for floor springs



Detachable spindles

Italian spindle with
square shape

German spindle with
flat-conical shape



DC450

Order information



Floor springs

| | |
|--|-----------------|
| DC450, EN size 3, with hold-open at 105° | DC450-----3-105 |
| DC450, EN size 3, with hold-open at 90° | DC450-----3--90 |
| DC450, EN size 3, without hold-open | DC450-----3-NHO |
| DC450, EN size 4, with hold-open at 105° | DC450-----4-105 |
| DC450, EN size 4, with hold-open at 90° | DC450-----4--90 |
| DC450, EN size 4, without hold-open | DC450-----4-NHO |

Cover plates

| | |
|---|-----------------|
| CP619 cover plate for DC450, polished stainless steel | DCCP619-----PSS |
| CP619 cover plate for DC450, satin stainless steel | DCCP619-----SSS |

Spindles

| | |
|--|----------|
| AC340 detachable Italian spindle, 0 mm, zinc plated | MA0340S0 |
| AC341 detachable Italian spindle, 5 mm, zinc plated | MA0341S0 |
| AC342 detachable Italian spindle, 10 mm, zinc plated | MA0342S0 |
| AC343 detachable Italian spindle, 15 mm, zinc plated | MA0343S0 |
| AC344 detachable Italian spindle, 20 mm, zinc plated | MA0344S0 |
| AC345 detachable Italian spindle, 25 mm, zinc plated | MA0345S0 |
| AC346 detachable Italian spindle, 30 mm, zinc plated | MA0346S0 |
| AC360 detachable German spindle, 0 mm, zinc plated | MA0360S0 |
| AC361 detachable German spindle, 5 mm, zinc plated | MA0361S0 |
| AC362 detachable German spindle, 10 mm, zinc plated | MA0362S0 |
| AC363 detachable German spindle, 15 mm, zinc plated | MA0363S0 |
| AC364 detachable German spindle, 20 mm, zinc plated | MA0364S0 |
| AC365 detachable German spindle, 25 mm, zinc plated | MA0365S0 |
| AC366 detachable German spindle, 30 mm, zinc plated | MA0366S0 |

Other accessories

| | |
|--|-----------------|
| AC115 reversible bottom arm, steel, socket for Italian spindle | MA0115S0 |
| AC393 reversible bottom arm, steel, socket for German spindle | MA0393S0 |
| AC8 double action top pivot | MA0008S0 |
| AC375 double action top pivot, full steel, with self-lubricating bushing | MA0375S0 |
| AC118 double action top pivot, with adjustable pivot point | MA0118S0 |
| AC583 right and left bottom arm, steel, 36 mm offset, socket for Italian spindle, ABS cover silver | DCAC583---DEV1- |
| AC583 right and left bottom arm, steel, 36 mm offset, socket for Italian spindle, ABS cover black | DCAC583---D9004 |
| AC392 right and left bottom arm, steel, 36 mm offset, socket for German spindle, ABS cover silver | DCAC392---DEV1- |
| AC392 right and left bottom arm, steel, 36 mm offset, socket for German spindle, ABS cover black | DCAC392---D9004 |
| AC384 right and left top arm, full steel, 36 mm offset, ABS cover silver | DCAC384---DEV1- |
| AC384 right and left top arm, full steel, 36 mm offset, ABS cover black | DCAC384---9004 |
| AC612 sealing compound for floor springs | MA0612S0 |

DC450



CP619, polished



CP619, satin



AC340



AC360



AC115



AC393



AC375



AC118



AC583, silver



AC583, black



AC392, silver



AC392, black



The ASSA ABLOY Group is the global leader in access solutions. Every day, we help billions of people experience a more open world.

ASSA ABLOY Opening Solutions leads the development within door openings and products for access solutions in homes, businesses and institutions. Our offering includes doors, door and window hardware, locks, access control and service.

ASSA ABLOY
Opening Solutions

ASSA ABLOY Opening Solutions EMEA
Dukes Court
Dukes Street
Woking
GU21 5BH
United Kingdom
assaabloy.com