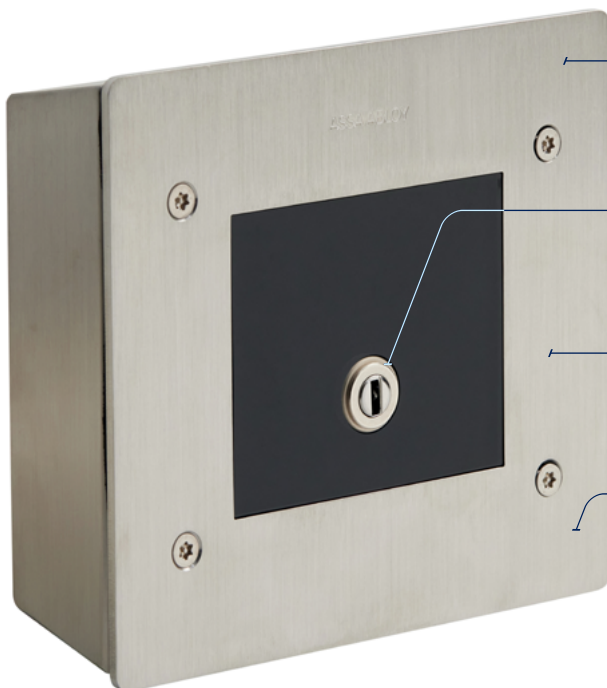


CLIQ[®] Outdoor Reader

Trusted CLIQ control for a variety of third-party outdoor devices



Robust stainless-steel housing with IK09 and IP65 protection

Customizable switch delay (1–10s) with activation on key insertion or removal

Acoustic and visual authorisation signals appear directly on the CLIQ key

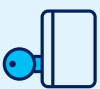
Different installation options (flush-mounted, surface-mounted, panel-integrated)



Compatible with all CLIQ user keys, CLIQ Web Manager, Local Manager and CLIQ Go

Various applications:

- Doors with electric strikes or motorized locks
- Automatic revolving doors or sliding glass doors
- Barriers, gates, and other entrances



Convenient

Key only needs to be inserted, not turned, minimizing wear-and-tear



Secure

Remote relay unit adds a valuable extra layer of security



Durable

Weatherproof IP65 and vandalproof IK09 protection

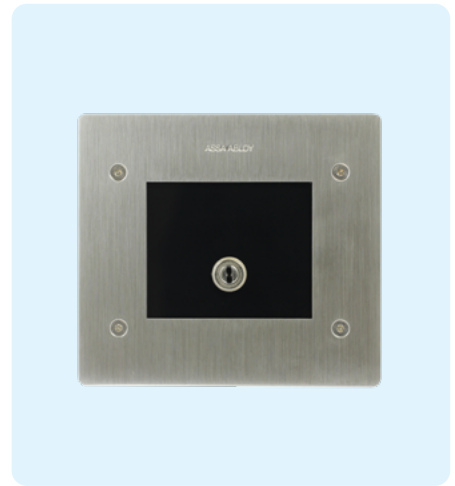


Versatile

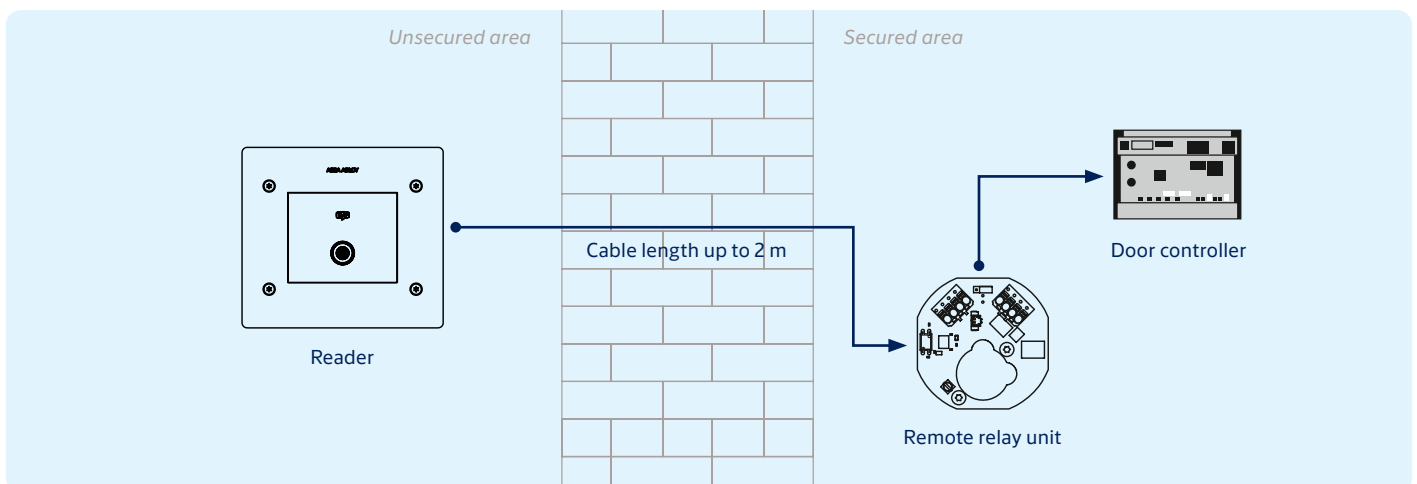
Diverse installation options ensure a wide range of applications

CLIQ Outdoor Reader

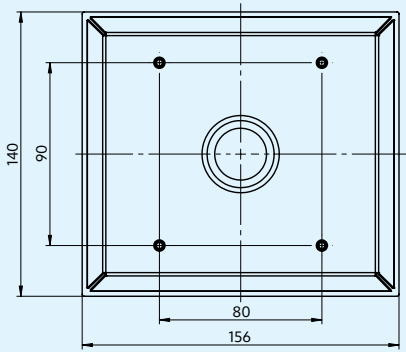
Specification



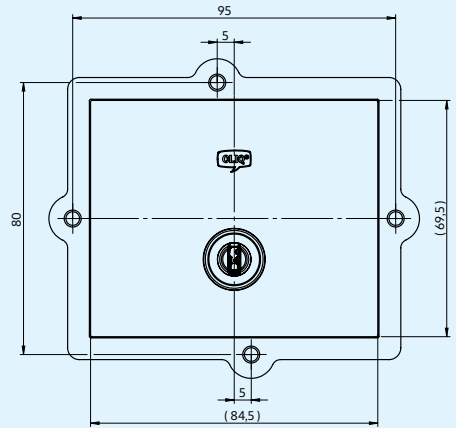
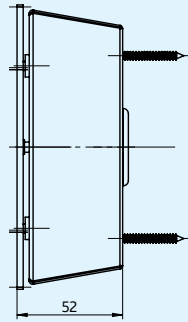
Technical data and features	
Housing material	Stainless steel
Mounting options	Surface mounting Flush mounting Integrated into intercoms or panels
Dimensions (W x H x D)	Surface-mounted: 156 x 140 x 52 mm Flush-mounted: installation dimension 135 x 121 x 45 mm, front plate 156 x 140 x 7 mm
Key adapter	Product-specific (eCLIQ / PROTEC ² CLIQ)
Connection	Offline
Interfaces	Free output: 1 A at 12 V AC or 24 V DC Adjustable switch time (approx. 1 – 10 s) with optional activation on key insertion or removal
Indicators	Operation indicator: White LED on the display Authorization status: Visual and acoustic signal in the key
Data storage	Yes
Security	Contact-based data transmission Secure element on separate PCB (remote relay unit), max. distance 2 m
Encryption	AES / 3DES
Management software	The CLIQ Outdoor Reader verifies the status of the inserted key and, if authorization is valid, switches the potential-free contact. Access rights are programmed via the CLIQ Web Manager, CLIQ Local Manager, or CLIQ Go software
Power	12 V DC to 24 V DC ± 10 % Current consumption at 12 V DC 0.1 A
Operating temperature range	-25 °C to +60 °C
Relative humidity	< 99 % (non-condensing)
Ingress protection	IP65
Impact protection	IK09
Certification	CE



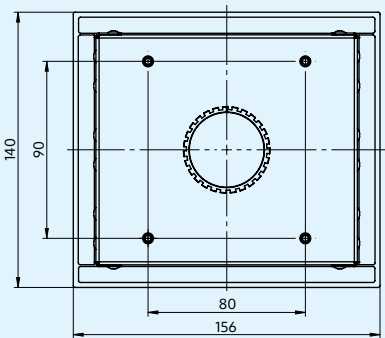
Dimensions in mm



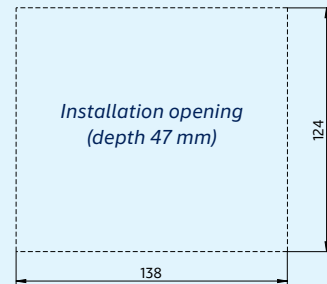
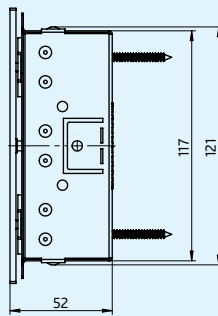
Surface mount



E-module



Flush mount



© Images: All rights reserved by ASSA ABLOY.
 We reserve the right to make technical modifications.
 Version: AA_CLIQ_Reader_Outdoor_Datasheet_2026-01_EMEIA

ASSA ABLOY
 Opening Solutions EMEIA
 Digital and Access Solutions
 Dukes Court
 Duke Street
 Woking
 GU21 5BH
 United Kingdom

ASSA ABLOY

assaabloy.com