



# ABLOY® eCLIQ

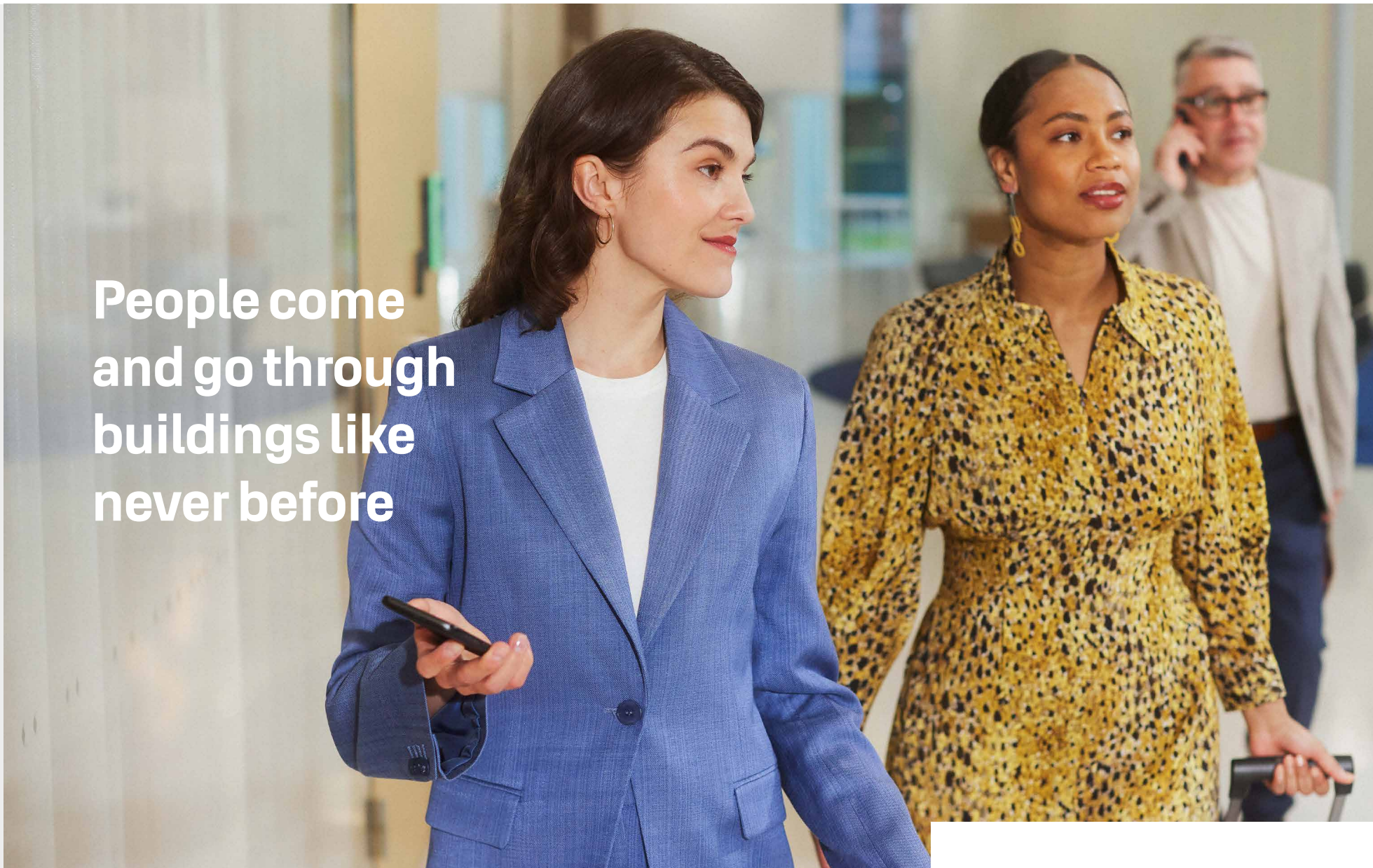
Digital Access for  
Convenience and  
Control



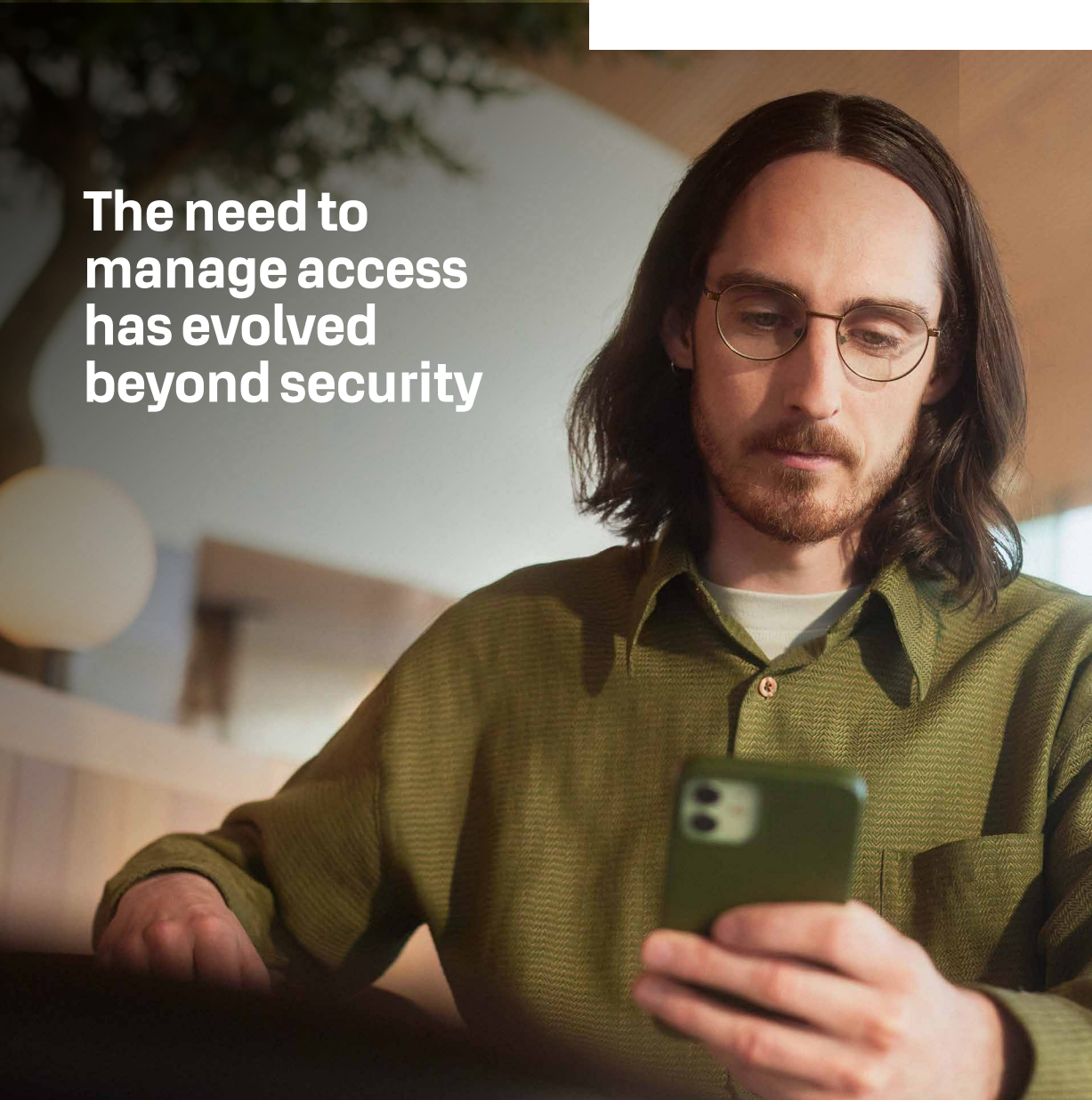
**ABLOY**



People come  
and go through  
buildings like  
never before







**The need to  
manage access  
has evolved  
beyond security**

## **New demands and challenges have arisen:**

### **SECURITY**

- Stop the security threat caused by lost keys
- Monitor access and events
- Boost cybersecurity
- Provide a safe workplace for staff and visitors

### **CONVENIENCE**

- Issue users with intuitive credentials
- Simplify access and security management
- Work smarter with cloud management

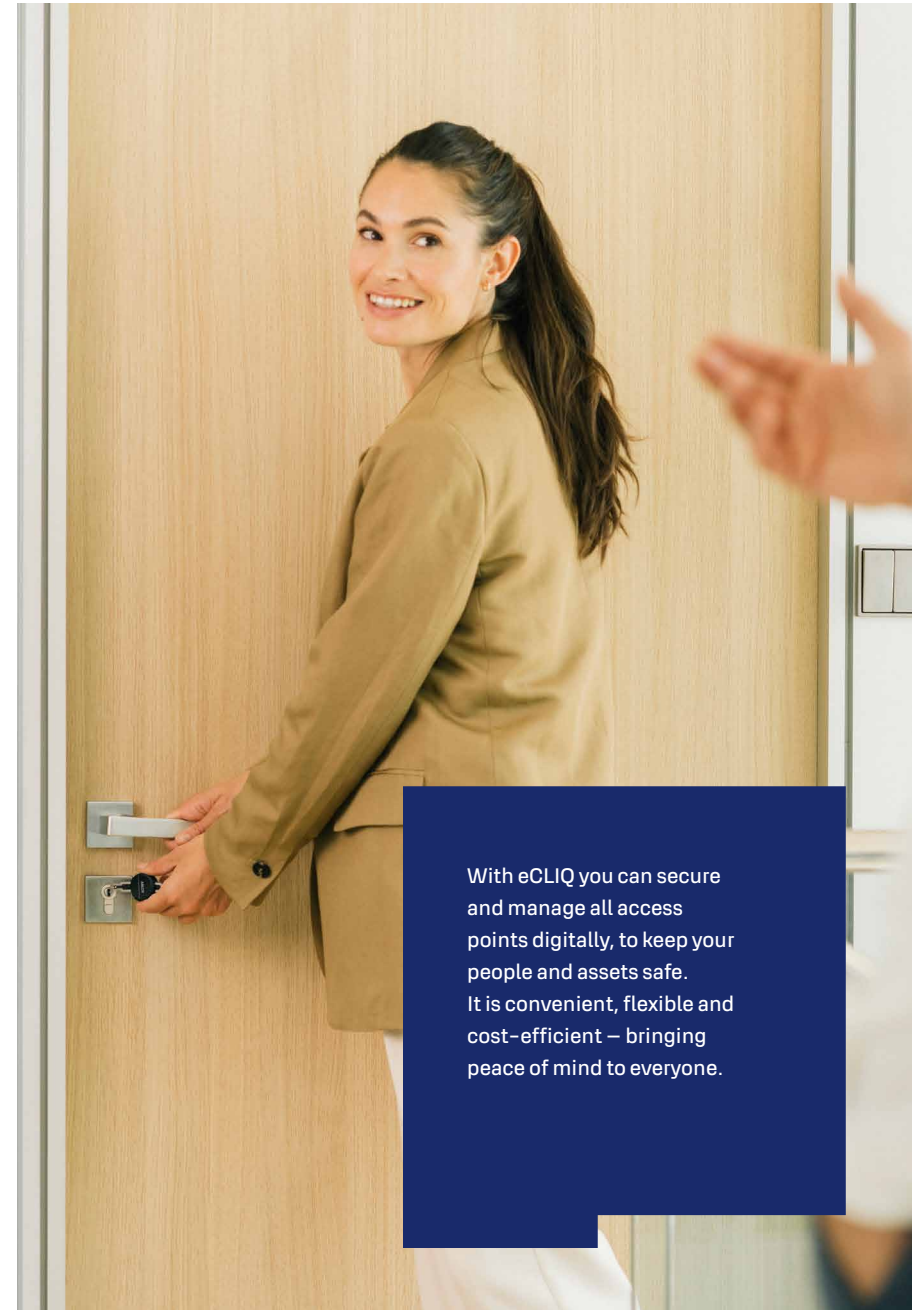
### **FLEXIBILITY**

- Make better use of offices and other workspaces
- Enable efficient, agile workflows

### **COST EFFICIENCY**

- Save time and money wasted dealing with lost keys
- Reduce ecological footprint and improve sustainability performance
- Define a concrete ROI for security enhancements

## Trust a global leader to show you smarter technologies



With eCLIQ you can secure and manage all access points digitally, to keep your people and assets safe. It is convenient, flexible and cost-efficient – bringing peace of mind to everyone.

# How your organization benefits from eCLIQ



## CONTROL YOUR BUILDING

- You decide who goes where, and when, by issuing access for each user or cancelling it with a click
- Time-limit access rights and resolve lost key issues quicker



## UPGRADE SITE SECURITY

- Quickly eliminate any threat from lost keys, audit cylinder or key use anytime, and set automatic time limits for a user's access rights



## SAVE MONEY

- No more cylinder changes because of lost keys
- Improved workflows through flexible access management
- CLIQ integrates with existing third-party software (e.g. Genetec, Lenel and Traka), offering system management flexibility



## PROTECT EVERYWHERE

- Cable-free cylinders for every application, to secure doors, gates, cabinets and more
- Users carry one programmable key for all their access points



## FIT FAST AND WIRE-FREE

- Swap an existing mechanical cylinder for an eCLIQ cylinder with one screw and no drilling



## SAVE EVERYONE'S TIME

- No more managing multiple keys and keycards, changing compromised locks or searching for a keyholder
- One key opens all access points for greater user convenience
- No more physical key handovers as access rights can be changed via Bluetooth



## BE ENERGY-EFFICIENT

- Power is supplied via an easy-to-change standard battery with a typical 10-year lifespan\* inside each key

\*excluding Connect key



# The 4 elements of your eCLIQ system

## SOFTWARE

Whether you run a small business with few access points, or your requirement is larger with more people involved, our software solutions make it easy to manage your system

## CYLINDERS

A wide range of battery-free cylinders and padlocks lock all your access points, such as interior and exterior doors, gates, cabinets, lockers, alarm systems and more



## PROGRAMMING DEVICES

A range of programming devices enables you to configure the system to meet the needs of different users and applications

## KEYS

A range of programmable smart keys ensure each user has a key that suits their workflow – access rights can be updated instantly as requirements change

A photograph of two men sitting at a table, looking at a laptop. The man on the left is older, with grey hair and glasses, wearing a green jacket over a white shirt. The man on the right is younger, with long dark hair and glasses, wearing an orange sweater. They are in a modern, brightly lit room with large windows in the background. A glass of water and a smartphone are on the table next to the laptop.

eCLIQ IS INTUITIVE  
TO MANAGE

## Software

### Three software options to manage your eCLIQ system

- A choice of software options for managing your eCLIQ system is available for any size of business
- Options include smartphone, hosting onsite and SaaS via the Cloud
- Integrations with third-party software available with CLIQ Web Manager
- Manage schedules for individual users and cylinders, audit trails, update access rights of user keys via the desktop, mobile or wall programming device
- Two-factor authentication enhances user security



Choose the right management software	CLIQ Go	CLIQ Local Manager	CLIQ Web Manager
<b>Business size</b>			
Small	✓	✓	✓
Medium		✓	✓
Large/Remote			✓
<b>Manage from...</b>			
PC application	✓	✓	✓
Online			✓
Smartphone	✓		
<b>Key functions</b>			
Manage audit trails	✓	✓	✓
Compatible with all eCLIQ keys	✓	✓	✓
Maximum number of cylinders	<70	3.000	>300.000
Creation of customized user groups		✓	✓
Admin software installation	Cloud	PC local	Server local, Cloud
Integration with 3rd party systems			✓

CLIQ Web Manager is integration-ready. You can build your own using our APIs or deploy a pre-existing integration for:



# Programming Devices

Update and activate keys wherever you are

- Acts as the secure data transmitter between CLIQ management software and programming key
- Choice of programming devices available to suit your business needs (desktop, wall or app)
- Anti-vandal rated external wall programming device available (weather ratings IP65 and IK09 vandal-proof)
- Grant and revoke key access rights remotely via wall programming devices or a smartphone



eCLIQ PROVIDES  
CONVENIENT WAYS TO  
UPDATE EVERYONE'S  
ACCESS





## Choose the right key programmers

### Desktop Programming Device

### Wall Programming Device

### App

Secure communication between key and programming device



Power supply

USB

12–24V ou PoE

Optimized for centralized management



Optimized for decentralized management



Compatible with all eCLIQ keys



Safe for use outdoors and protection against dripping water



Bluetooth connectivity



# Keys

## The right key for the job – whatever it is

- Fully electronic with only one key profile
- 3 keys with many variations open all eCLIQ cylinders
- Access rights can be updated remotely using the Connect key and app, saving additional car journeys to collect or update keys
- Power is supplied via an easy-to-change standard battery with a typical 10-year lifespan\* inside each key
- Withstands any weather conditions and extreme environments (water- and dust-proof to IP67, ATEX standard)
- Battery covers with RFID chips available for all keys

The electronic contact between keys and cylinders transmits power and data securely

Keys and cylinders can be programmed with flexible access rights with validity periods



Compact, programmable key with LED and acoustic signal

Fast, easy standard battery replacement in the key – no need for tools



**THE BATTERY INSIDE AN eCLIQ KEY LASTS 10 YEARS ON AVERAGE\* AND IS EASY FOR ANYONE TO REPLACE – NO TOOLS NEEDED**

\*excluding Connect key





Choose the right key

Basic

Professional

Connect

10-year battery life  
(approximately 100,000 operations)



2 ans

Dust- and weather-proof (IP67)



Convenient LED feedback



Additional sound feedback



Update access rights by desktop, wall or a mobile



Update access rights via app/Bluetooth



Unlock doors, cabinets, elevators, machines, gates and more



The keys come with different features, such as access authorization, time/schedules/  
revalidation, audit trails or directly programmable, depending on the type of key.

# Cylinders

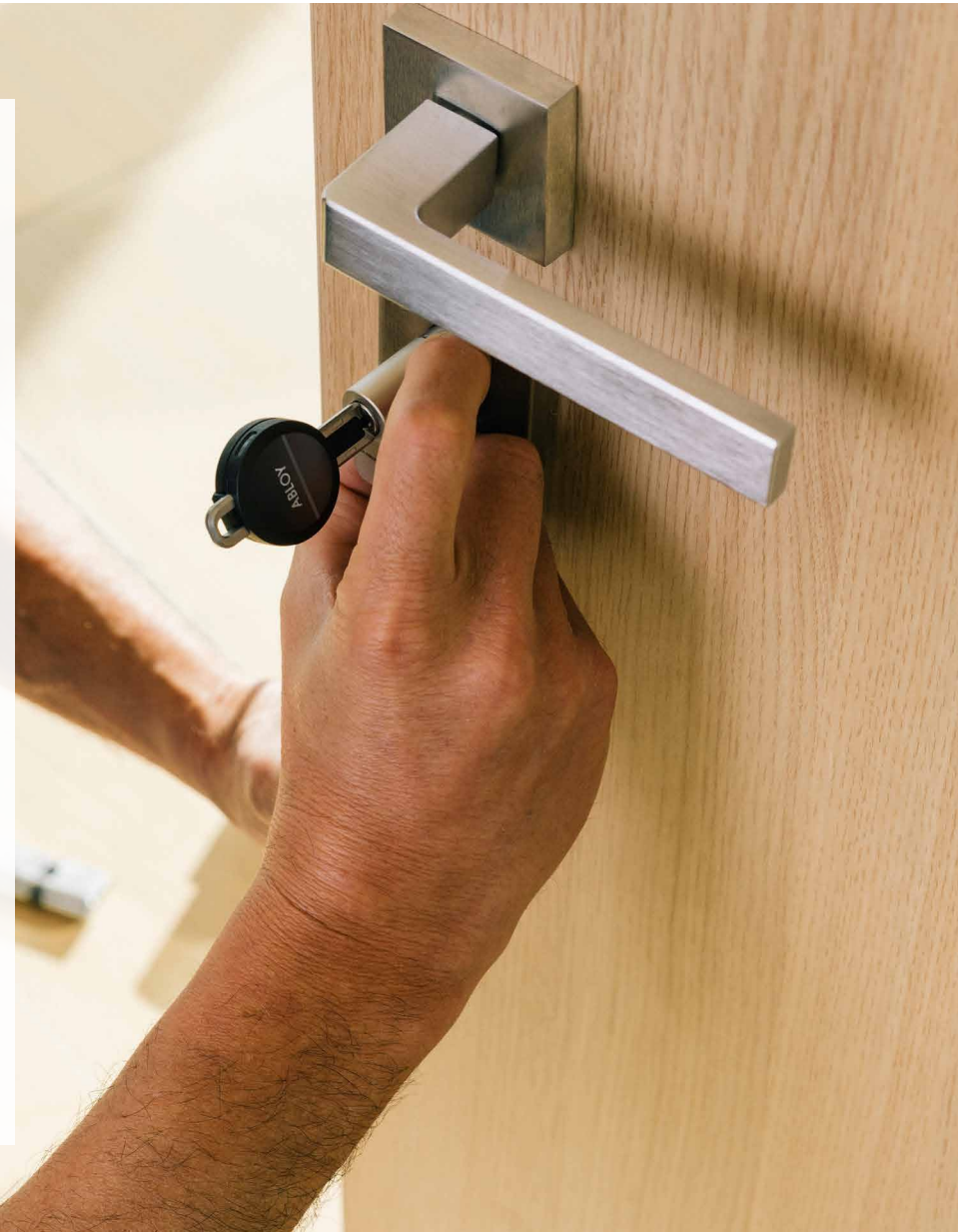
Secure, reliable... and beyond doors

- Fully electronic cylinders – also available in shorter lengths
- More than 60 eCLIQ cylinder types, including padlocks and cam locks
- Simply swap an existing mechanical cylinder for an eCLIQ cylinder with just one screw change
- No drilling and no wires makes them the ideal choice for retrofit or installation in historic buildings
- Maintenance-free for up to 200,000 cycles due to an innovative integrated lubricant depot inside each cylinder

Cylinders are easy and quick to install, no cabling is needed



New future-proof eCLIQ chip generation with AES encryption and rapid processing speed with efficient energy management





**ALARM SYSTEMS**  
Single cylinder



**MACHINE**  
Switch cylinder



**DOCUMENT CABINET**  
Furniture cylinder



**OUTDOOR CONTAINERS**  
Padlock



**CONTROL PANEL**  
Screw-in cylinder



**SERVER CABINET**  
Special cylinder



**FURNITURE**  
Furniture lock



**LIFTS**  
Switch cylinder



**MAIN ENTRANCE**  
Double cylinder  
with dust and rain  
protection cap



**INTERIOR DOORS**  
Double cylinder



**GLASS SLIDING DOOR**  
Push-in cylinder



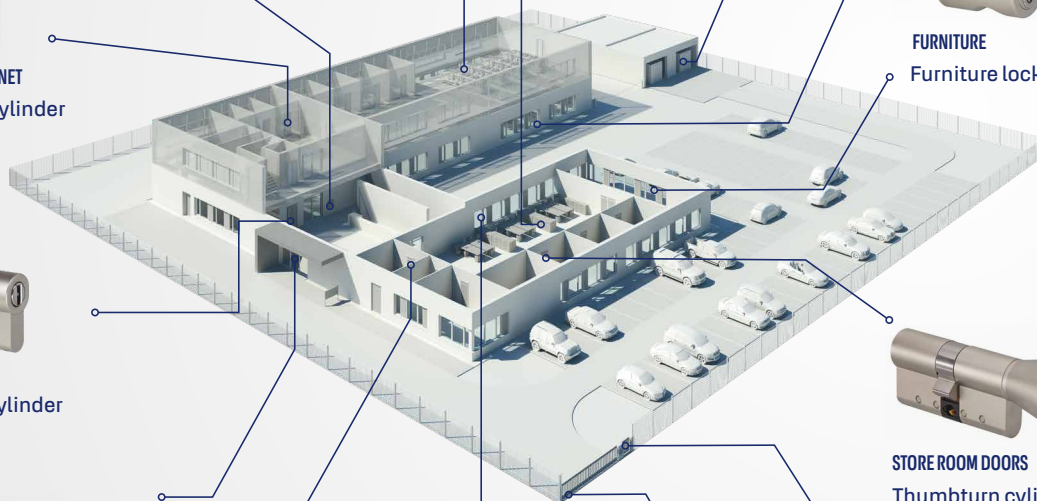
**MAIL BOX SYSTEMS**  
Cam lock



**FIRE SERVICE SAFES**  
Cylinder for key safe tube



**STORE ROOM DOORS**  
Thumbturn cylinder



**FITTING AN  
eCLIQ CYLINDER  
IS QUICK AND  
EASY – NO WIRES  
MAKES IT THE  
IDEAL CHOICE FOR  
RETROFITTING**



# These customers – and many more around the world – rely on eCLIQ



OFFICE & ENTERPRISE

**World Trade Center Amsterdam** needed to electronically upgrade more than 1,000 doors and chose the wireless, easy-to-install eCLIQ system to more efficiently manage the many contractors and suppliers who enter the buildings every day



MULTI-RESIDENTIAL

**GWW Wiesbadener Wohnungsbaugesellschaft** in Germany was looking for an easy-to-install, digital solution to secure the entrances, communal and technical doors of all its residential buildings and found it in eCLIQ



INDUSTRY & UTILITIES

Electricity supplier **K&F Drack** in Almtal, Austria chose eCLIQ for its flexibility in installation and use, as well as for its low maintenance requirements



ENTERTAINMENT & CULTURE

**Humboldt Forum Museum** in Berlin, Germany needed a flexible solution to support differing room usage. eCLIQ offered a very high standard of security and simple access authorisation management



HEALTHCARE

Installing eCLIQ on the **NHS Raigmore Hospital** site in the UK meant that facility managers had a detailed overview of who was accessing rooms, which is essential for hospital security



PUBLIC FACILITIES

The commune **Saint-Jacut-de-la-Mer** in France faced growing security management difficulties for their municipal buildings, so unified and simplified access with eCLIQ

# Life is easier when you just CLIQ

## GET IN TOUCH

If you would like more advice on eCLIQ, one of our experts in your area can get in touch.

### They can help you understand:

- How a key-based access control system can help keep your building and colleagues safe
- The benefits and simplicity of changing your current locking system to eCLIQ



**CONTACT YOUR LOCAL  
CLIQ EXPERT NOW.  
CLICK HERE OR  
SCAN THE QR CODE.**



ABLOY offers security and locking innovations dedicated to creating more trust in the world. Combining digital and mechanical expertise, Abloy Oy develops industry-leading security solutions that protect people, property and business. Abloy is part of the ASSA ABLOY Group, the global leader in access solutions. Every day, we help billions of people experience a more open world.

ASSA ABLOY Opening Solutions France  
Digital and Access Solutions  
Grand Troyes -10 avenue de l'Europe  
10300  
SAINTE SAVINE  
France

Abloy maintains Product Security Center at [www.abloy.com/securitycenter](http://www.abloy.com/securitycenter). We recommend that You check the Center on a regular basis in order to be fully informed of product security updates, so that your knowledge of our products remains optimal.

It is the customer's responsibility to define the required level of security, whilst taking into consideration relevant factors for its operations. To achieve the overall level of security required in the customer's operations multiple layers of security must be in place. These include for example locking system, key management system, access management, CCTV and alarm system as well as physical security in a manner and level specified by the customer.

This content is protected by Intellectual Property Rights Laws. The title to the content shall not pass to you, and instead shall remain with Abloy Oy or a third party holding the title. Abloy develops continuously the products and solutions offered. Therefore, the information contained in the document is subject to change without notice. ABLOY PROVIDES THIS CONTENT ON AN "AS IS" BASIS WITHOUT ANY WARRANTIES OF ANY KIND EXPRESS, IMPLIED, OR STATUTORY."

