



ASSA ABLOY Door Handles

ASSA ABLOY
Opening Solutions

For exterior and interior doors

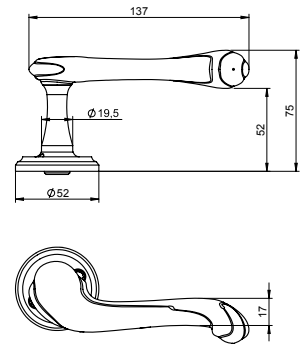
Experience a safer
and more open world

Front door – Epok



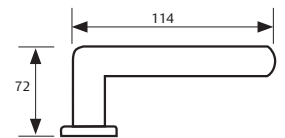
Epok 1903 -matt chrome

In 1903 the Wright brothers piloted an aircraft for a total of 12 seconds, traveling a total length of 37 meters. The first transatlantic radio broadcast takes place between England and the United States. The first Tour de France is raced.



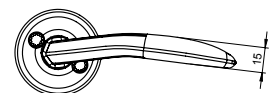
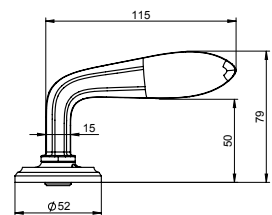
Epok 1905 – matt chrome

This lever handle was inspired by the most common Art Nouveau handles, but it is slightly heavier and more distinct. It is ideal for use in interior doors.



Epok 1918 – matt chrome

This lever handle clearly shows influences from this period, although it is slightly heavier and the design is more distinct. The timeless elegance of the handle allows it to be used in practically any building, as long as the architecture is similarly elegant and timeless. Suitable for use in all modern-style houses with the exception of extremely functionalist ones.







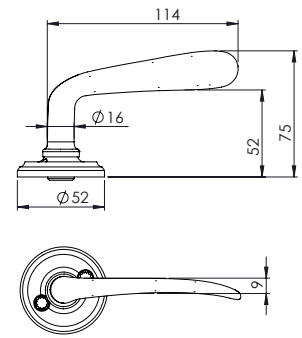
Front door – Epok



Epok 1923 – matt chrome

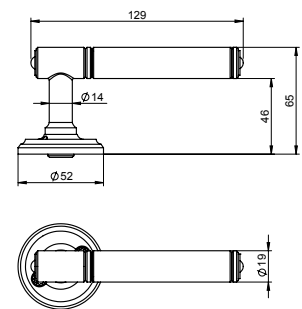
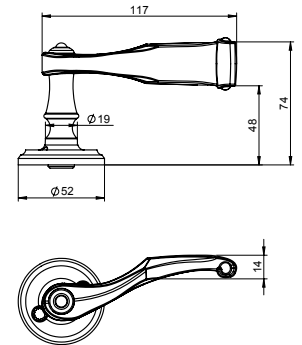
This lever handle reflects the Nordic Classicist style of the 1920s.

With its rounded spoon shape, it suits both interior and exterior doors.



Epok 1927 – matt chrome

The first VOLVO car is produced and sold, with a price tag of SEK 4,800 (about EUR 520 at present-day exchange rates). The first successful long-distance demonstration on television occurs. The Ford Motor Company ceases manufacturing its Model T.



Epok 1930 – nickel black

This lever handle is a sort of cross between two previously incompatible design periods. It combines the bud-like tubular handle of the 1880s and 1890s with the simple modernist handles of the 1930s. With a brass neck and black-and-white grip, the handle suits the style of the late 19th century. At the same time, its bright neck and black grip fit with 1930s functionalism and its modern successors.

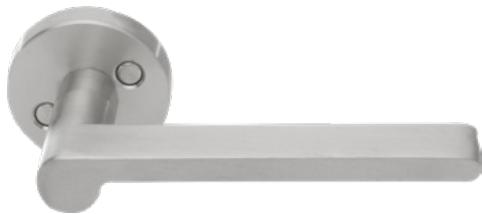
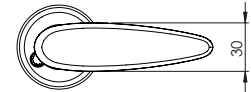
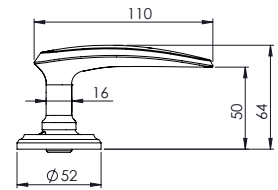
The combination of bright neck and white grip brings us to the 1940's, whereas simple bright or the combination bright/brass are more modern. Hence, the combination of colors and finishes make this handle suitable for many different periods.

Front door – Epok



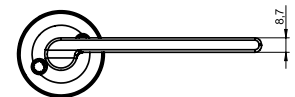
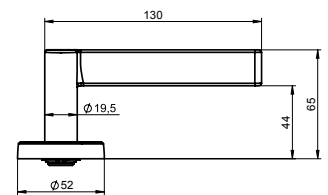
Epok 1935 – matt chrome

A beautifully shaped lever handle that has become a favorite of many. The clear, straightforward design refers to the period when the streamline form became popular.



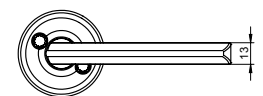
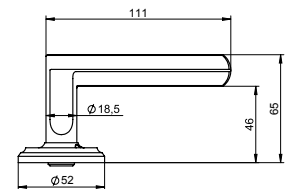
Epok 1937 – matt chrome

Bruno Mathsson, famous Swedish architect, receives an award at the world exhibit in Paris. Walt Disney's Snow White and the Seven Dwarfs premieres, and quickly becomes a smash hit. Morgan Freeman is born.



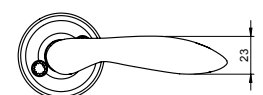
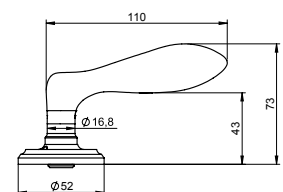
Epok 1949 – matt chrome

Many people recognize this lever handle model as the classic ASSA ABLOY handle. This particular model is slightly lighter and has a diamond-shaped grip that fits the hand well. Suitable for both interior and exterior doors.



Epok 1956 – matt chrome

This lever handle has a funny history: they say the designer simply squeezed a clump of clay, without even looking, until it felt right. The handle in production today has essentially the same shape as that clay model. The model bears a clear resemblance to ASSA ABLOY lever handle 696, and the heritage of the 1950s design is evident. To achieve a more modern design, the shapes of the handle have been somewhat exaggerated. This handle is well suited for all architectural trends of the 1950s and onwards.







The building is a three-story structure with a gabled roof covered in red tiles. The exterior walls are primarily dark red wood siding, accented with white trim around the windows and doors. The roofline is decorated with white wooden brackets. A large brick chimney is visible on the roof. The second floor features a wide white balcony with a decorative railing. The ground floor has a white door and several windows, with a small outdoor dining table and chairs nearby.

A white wooden balcony with a decorative railing, located on the second floor of the house. It is accessible via a white wooden staircase that descends from the balcony to the ground level.

An outdoor dining area consisting of a dark wooden table and four matching chairs, situated on a stone-paved terrace next to the ground floor of the house.

A wooden deck area on the ground level, featuring several wooden lounge chairs and a white folding chair, positioned against the base of the large rock formation.

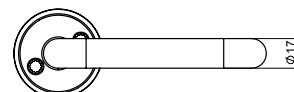
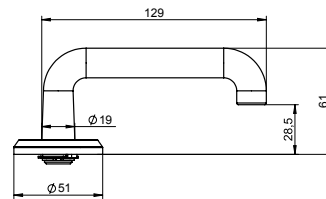
A large, grey, moss-covered rock formation that serves as the foundation for the house. The rock is textured and has patches of green moss growing on its surface.

Front door – Classic



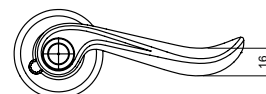
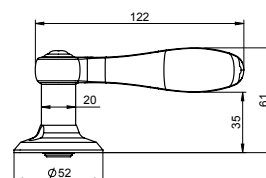
6616 – matt chrome

This lever handle represents our most minimalistic design. It is a very simple, modern handle ideal for buildings with a plain decor, such as hospitals and institutions.



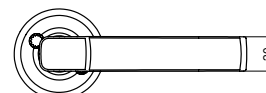
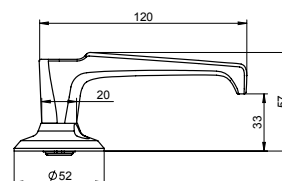
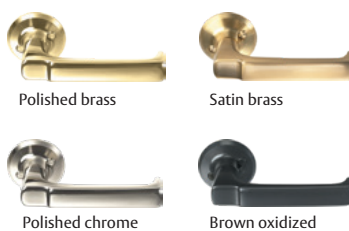
6638 – matt chrome

The design of this lever handle reflects both the baroque and rococo styles, yet in a simpler manner to suit architecture with less curved forms.



6647 – matt chrome

This lever handle was designed by Carl Arne Breger in the 1970s and reflects the rational and slightly square-shaped design that characterises that time. With its discreet but distinguished design the handle is a modern-day classic.

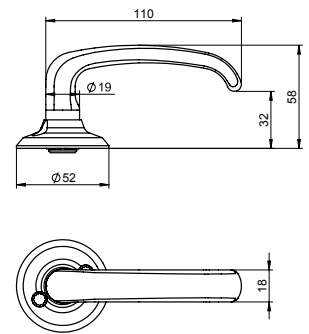


Front door – Classic



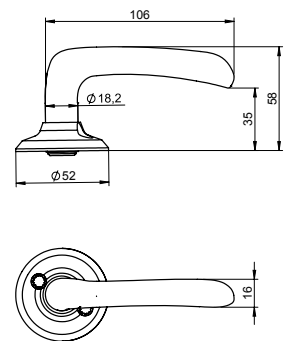
6640 – matt chrome

A classic lever handle from the 1950s and 1960s that is still very popular. A great design that will last for many years to come and is suitable for a great range of environments.



6696 – matt chrome

This is another classic ASSA ABLOY lever handle from the 1950s and 1960s. The handle has a discreet, thorough design. Function is important, but not at the expense of attention to human aspects. This makes it timeless and suited to all applications.





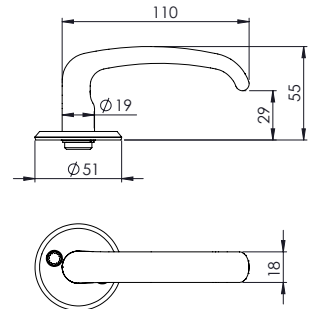


Front door / Inner door – Classic



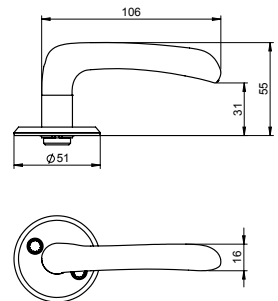
640 – matt chrome

The classic ASSA ABLOY lever handle from the 1950s and 1960s in its original design. The handle is well-known and features thorough and careful design. The ASSA ABLOY 640 is available for DIN-standard lock cases.



696 – matt chrome

The classic ASSA ABLOY lever handle from the 1950s and 1960s in its original design. The handle is well-known and features thorough and careful design.



Polished chrome

Application – For decorative use. Suitable for indoor and outdoor environments, in which corrosion can appear.

Finish – Bright polished surface with excellent resistance to wear and tear as well as corrosion.

Satin chrome

Application – For decorative use. Suitable for indoor and outdoor environments, in which corrosion can appear.

Finish – Brushed surface with excellent resistance to wear and tear as well as corrosion.

Polished brass

Application – For decorative use in indoor environments.

Finish – Polished surface. Not recommended in environments subjected to sea air, because this will cause fittings to oxidize and turn black.

Satin brass

Application – For decorative use in indoor environments.

Finish – Brushed surface. Not recommended in environments subjected to sea air, because this will cause fittings to oxidize and turn black.

Brown oxidized

Application – For decorative use in indoor environments.

Finish – Anodised surface with limited protection against wear and tear. Not recommended in environments subjected to sea air, because this will cause fittings to oxidize and turn black.

Stainless steel

Application – For decorative use in all environments.

Finish – Brushed surface. Very high resistance to wear and tear as well as corrosion.

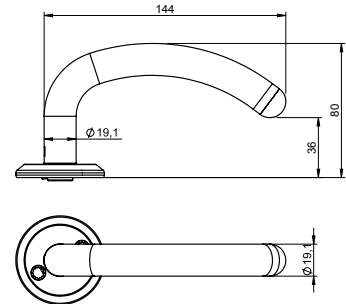
Front door – Stainless steel

Our stainless steel lever handles, pull handles and accessories are ideal for modern public areas such as institutions and offices. The stainless steel material is highly resistant to corrosion and severe air pollutants, and is recommended for use in environments with stringent hygienic requirements.

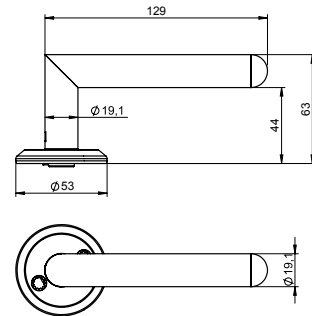
Thumbturns, toilet and cylinder accessories are available in the same design series to complement the ASSA ABLOY stainless steel lever handles.



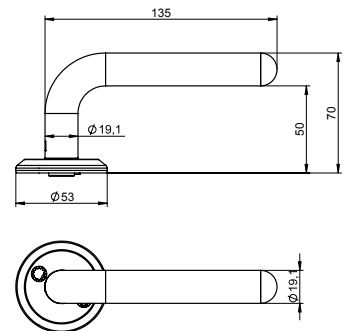
8650 – stainless steel



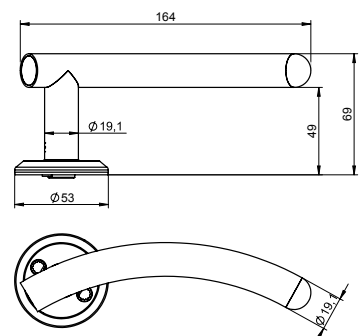
8680 – stainless steel



8665 – stainless steel



8690 – stainless steel

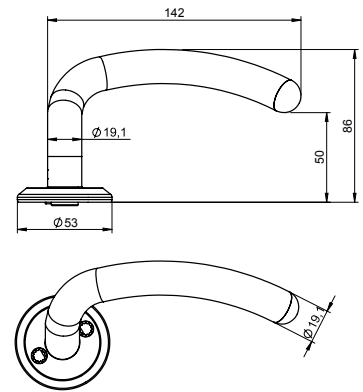




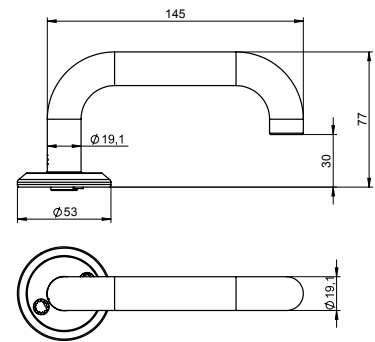
Front door – Stainless steel



8670 – stainless steel

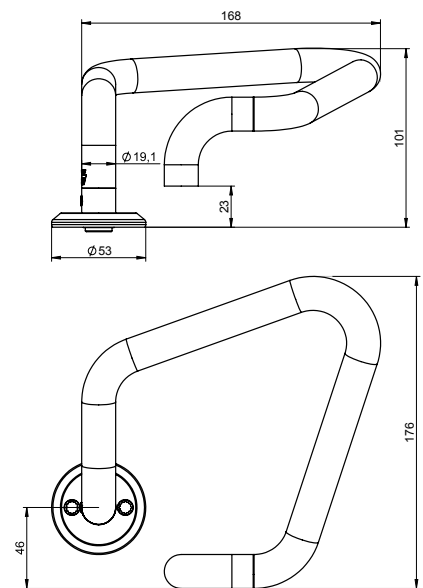


8639 – stainless steel



Hygienic handle

The ASSA ABLOY Hygienic Handle is an ergonomically designed lever handle that meets the stringent requirements of modern hospital environments. Designed in collaboration with the White architecture firm.



Accessories



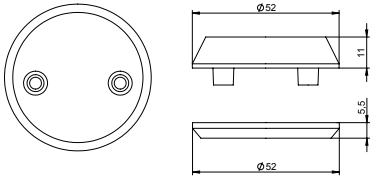
8565

This use on any restroom door at any location or environment in combination with Lock case 565 or Lock case 310.



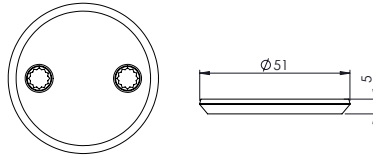
4265

Accessory to cover door preparation for clinders.



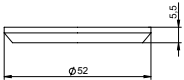
992

Accessory to cover door preparation for handles.



262E

Toilet accessory for inner doors



Accessories



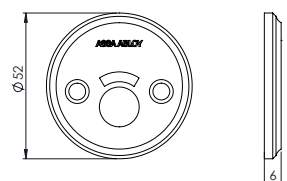
263

Toilet accessory for inner doors



265

Toilet accessory for lock cases 565 and 310



265E

Toilet accessory for lock cases 565 and 310



167

Turning door knob



496

Stationary pull knob

Prion®

Application – For decorative use. Suitable for standard indoor and outdoor environments.

Finish – Nickel-free plating suitable for users with a contact allergy. The finish has strong resistance against wear and tear as well as corrosion.

Nickel

Application – For decorative use. Suitable for standard indoor and outdoor environments.

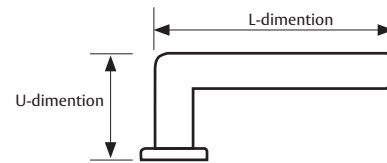
Finish – Bright surface with high resistance to wear and tear as well as corrosion.

Addion®

Application – For decorative use. Addion is ideal for use in environments in which bacteria spread easily, such as in healthcare, schools and childcare facilities, etc.

Finish – Addion is a unique nickel-free metallic plating that combines effective decomposition of bacteria with an excellent degree of resistance to wear and tear as well as corrosion.

Dimensions for handle in mm and surfaces



Model	L-dimension	U-dimension	Dia-meter	Needle bearings	Prion	Nickel	Addion	Polished chrome	Matt chrome	Polished brass	Satin brass	Brown oxidized	Stainless steel
Epok													
1903	137	75				x			x	x	x	x	
1905	114	72			x	x		x	x	x	x	x	
1918	115	79			x	x		x	x	x	x	x	
1923	114	75			x	x		x	x	x	x	x	
1927	117	74				x		x	x	x	x	x	
1930	129	65				x			x	x			
1935	110	64			x	x		x	x	x	x	x	
1937	130	65				x		x	x	x	x	x	
1949	111	65			x	x		x	x	x	x	x	
1956	110	73			x	x	x	x	x	x	x	x	
Classic													
6616	129	61			x	x	x	x	x	x	x	x	
6638	122	61			x	x		x	x	x	x	x	
6647	120	57			x	x	x	x	x	x	x	x	
6640	110	55			x	x	x	x	x	x	x	x	
6696	106	58			x	x	x	x	x	x	x	x	
640	110	55			x	x	x	x	x	x	x	x	
696	108	55			x	x	x	x	x	x	x	x	
Stainless steel													
8650	144	80	19	x									x
8680	129	63	19	x									x
8665	135	70	19	x									x
8690	164	69	19	x									x
8670	142	86	19	x									x
8639	145	77	19	x									x
Hygienic Handle	168	176	19	x									x
Toilet assesories for Inner door													
262						x		x	x				
262E						x		x	x		x		
263						x		x	x				
Toilet assesories for Modular locks													
265			52		x	x	x	x	x	x	x	x	
265E					x	x		x	x	x	x	x	
Cover plates for Modular locks													
4265			52		x	x		x	x	x	x	x	x
992			51		x	x	x	x	x	x	x	x	
Door knobs													
167					x	x		x	x	x	x	x	
496					x	x		x	x	x	x	x	

ASSA ABLOY is the global
leader in door opening solutions,
dedicated to satisfying
end-user needs for security,
safety and convenience

ASSA ABLOY

ASSA ABLOY Baltic AS
Priisle tee 10
13914 Tallinn
Estonia
Tel +372 655 9101
Faks +372 655 9100
e-mail: eesti@assaabloy.com
www.assaabloyopeningsolutions.ee