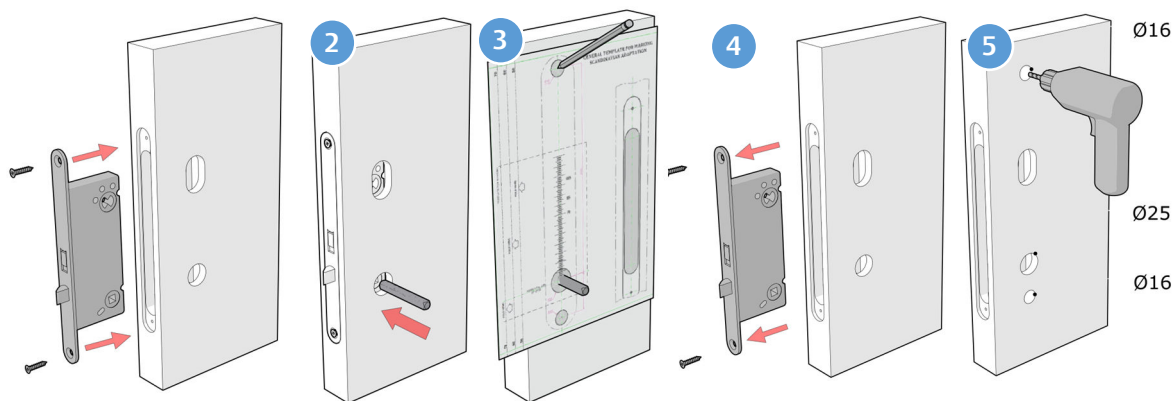


1

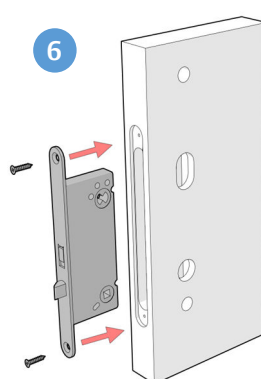
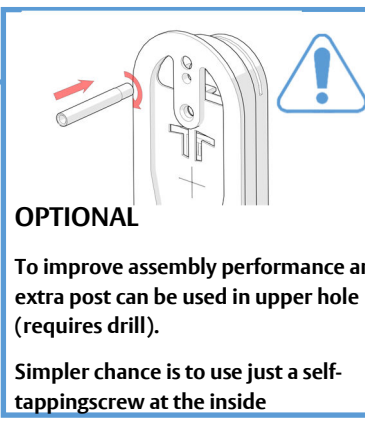
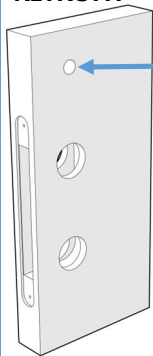
1. DOOR INSTALLATION



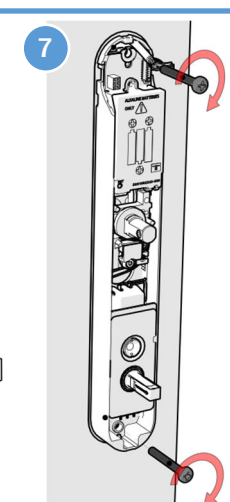
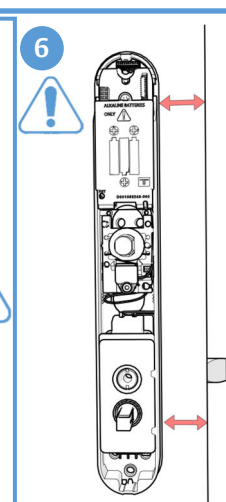
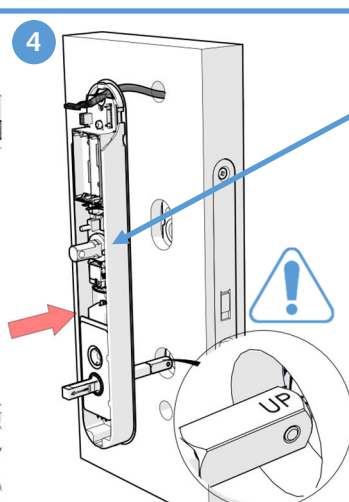
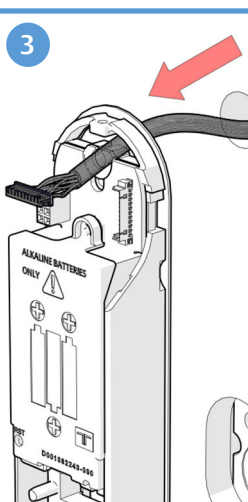
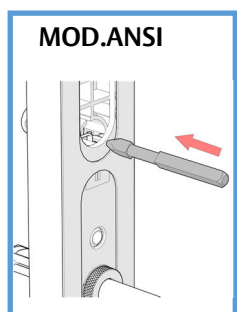
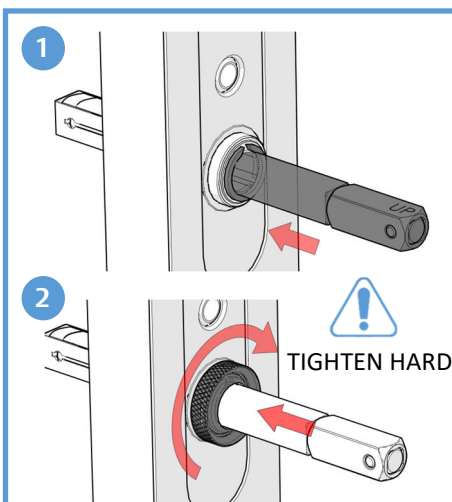
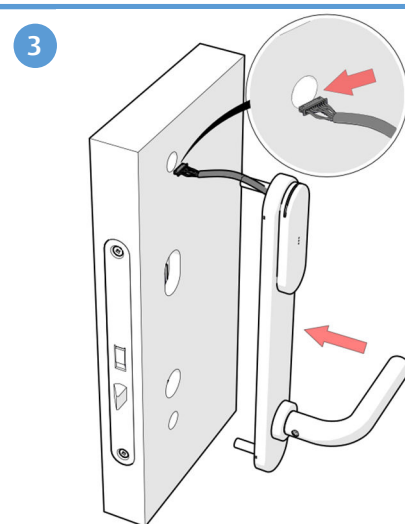
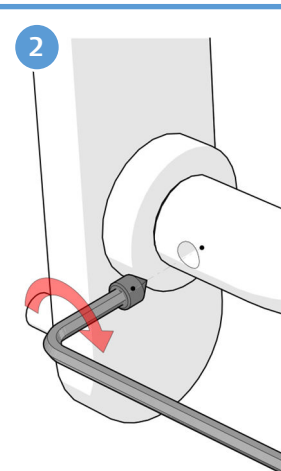
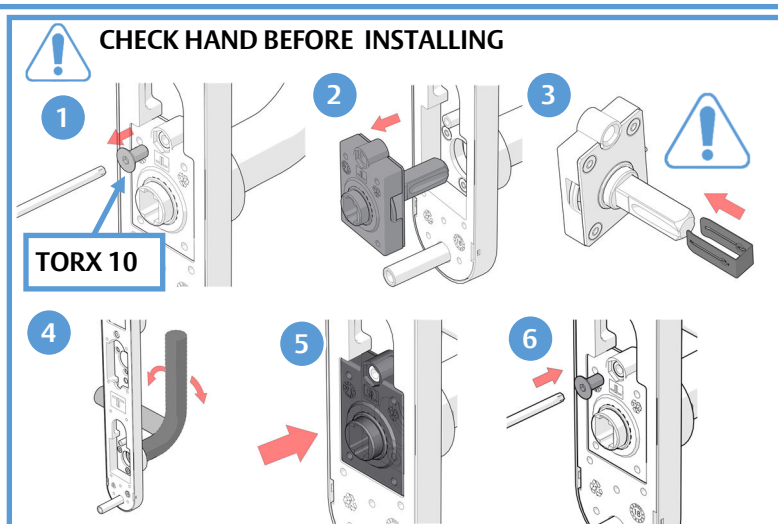
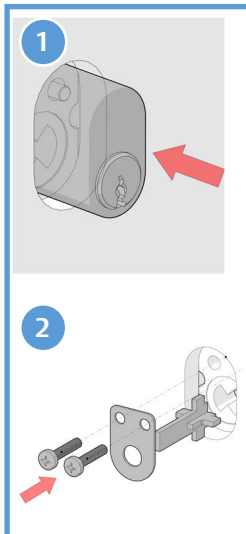
i-max



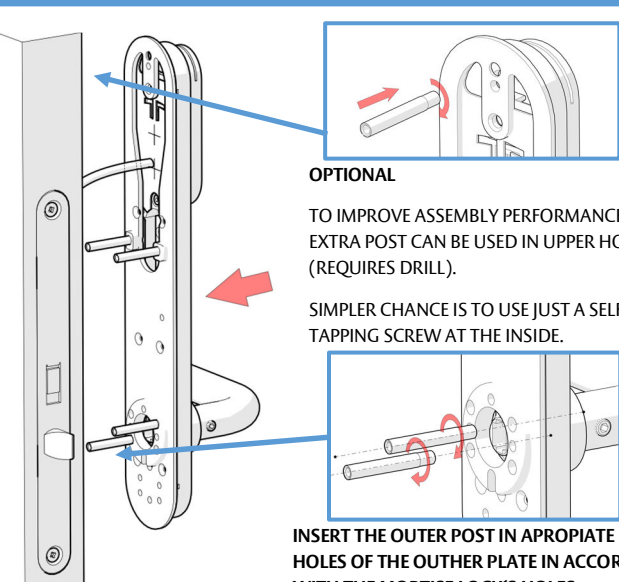
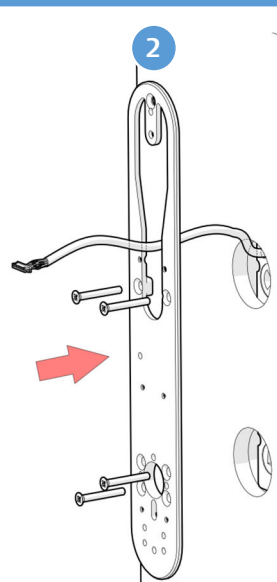
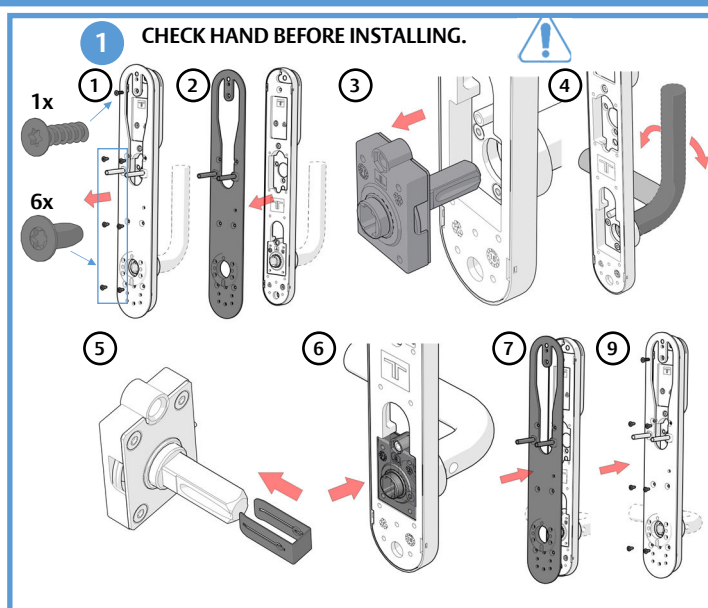
RETROFIT



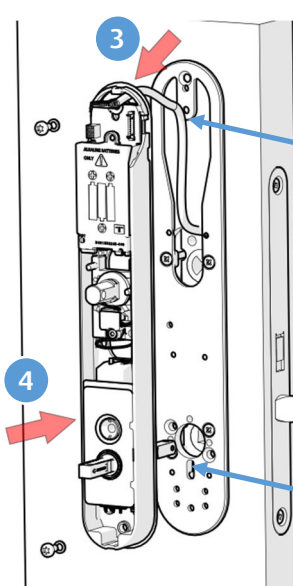
2. INSTALLATION



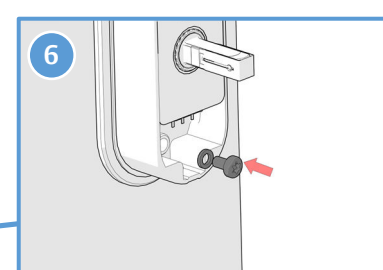
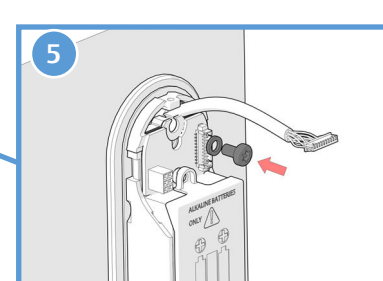
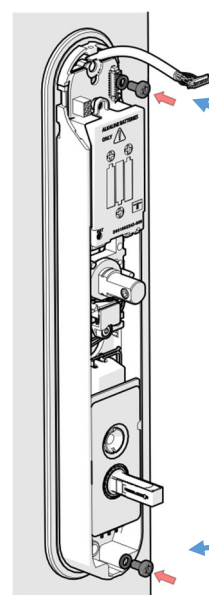
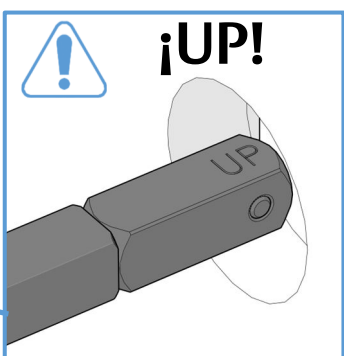
ASSEMBLING SCANDINAVIAN RETROFIT (Other operation as general installation)

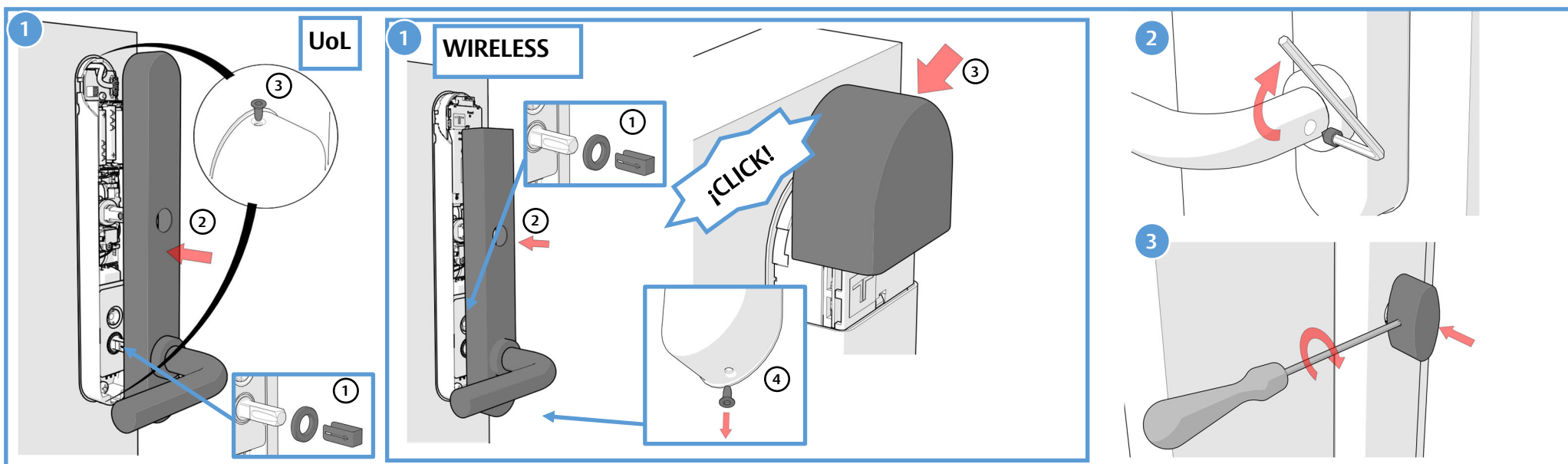
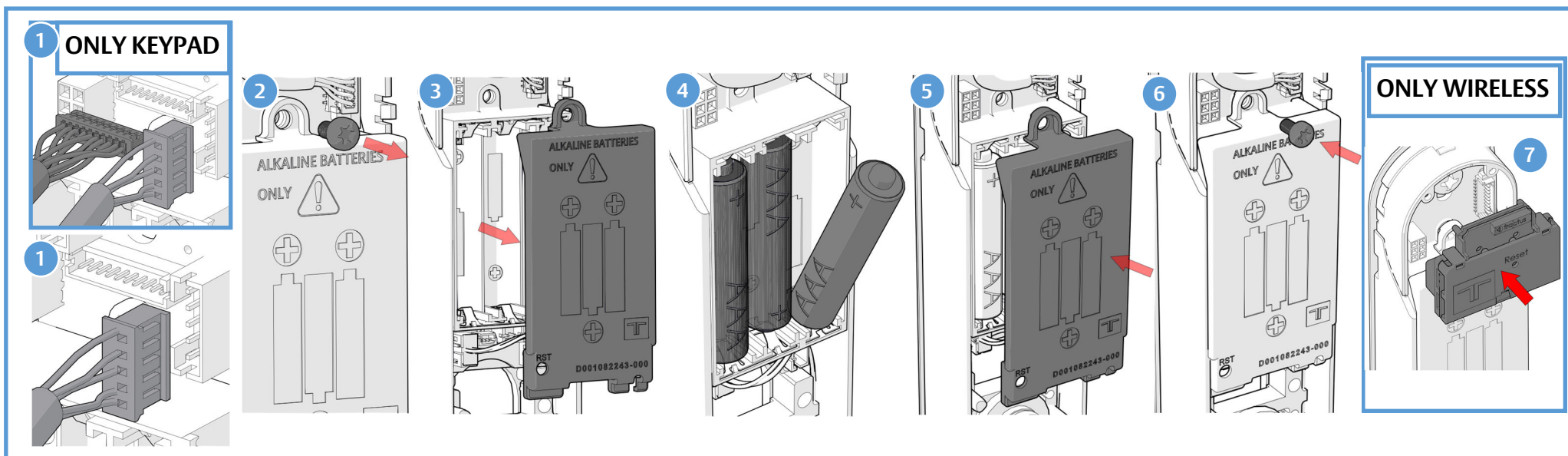


INSERT THE OUTER POST IN APROPIATE SCREWED HOLES OF THE OUTER PLATE IN ACCORDANCE WITH THE MORTISE LOCK'S HOLES

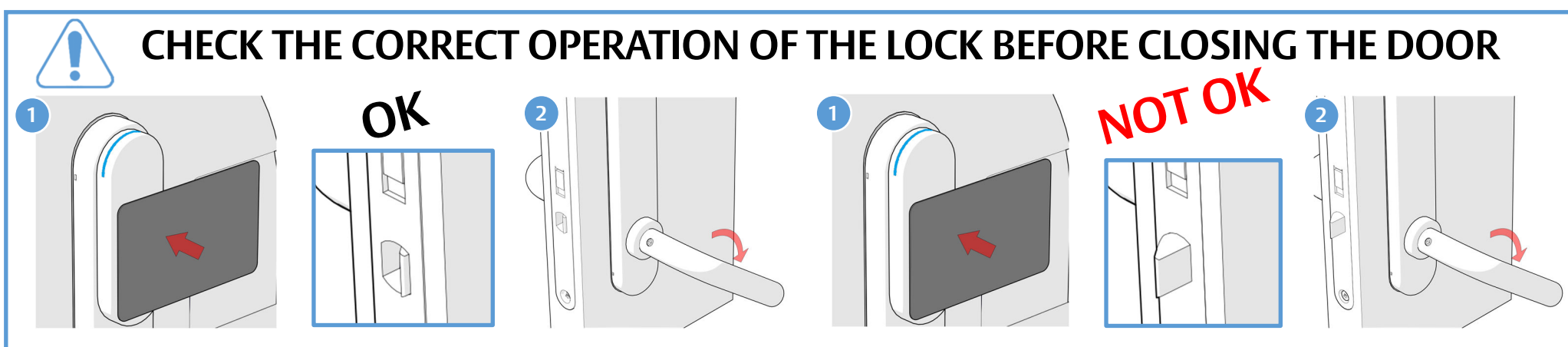


PLACE THE ANTENNA CABLE CAREFULLY BETWEEN THE INNER PLATE AND THE ELECTRONIC ESCUTCHEON, AND AVOID

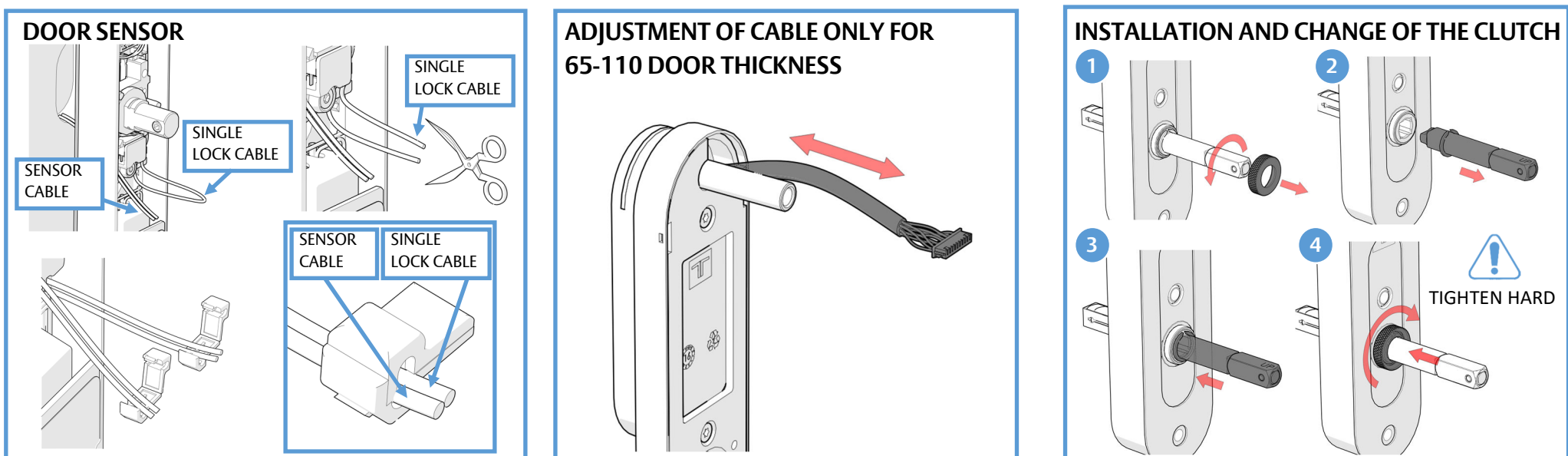




3. TEST



4. DETAILS



5. MAINTENANCE

