

# Aperio® E100 Wireless Escutcheon

**ASSA ABLOY**  
Opening Solutions

## Robust access control with customizable features

The ASSA ABLOY Aperio E100 is the most convenient way to upgrade access control: It is fitted without wiring at the door and works with almost any system, via Online, Offline or OSS-standard offline integration.

Experience a safer  
and more open world



Open with a smart card or mobile phone. The Keypad option offers multi-authentication for an extra layer of security\*.

\*Only supported by Aperio online

Main electronics (RFID + radio + BLE) outside, security electronics inside.

Audio signal when card is presented or keypad is operated.

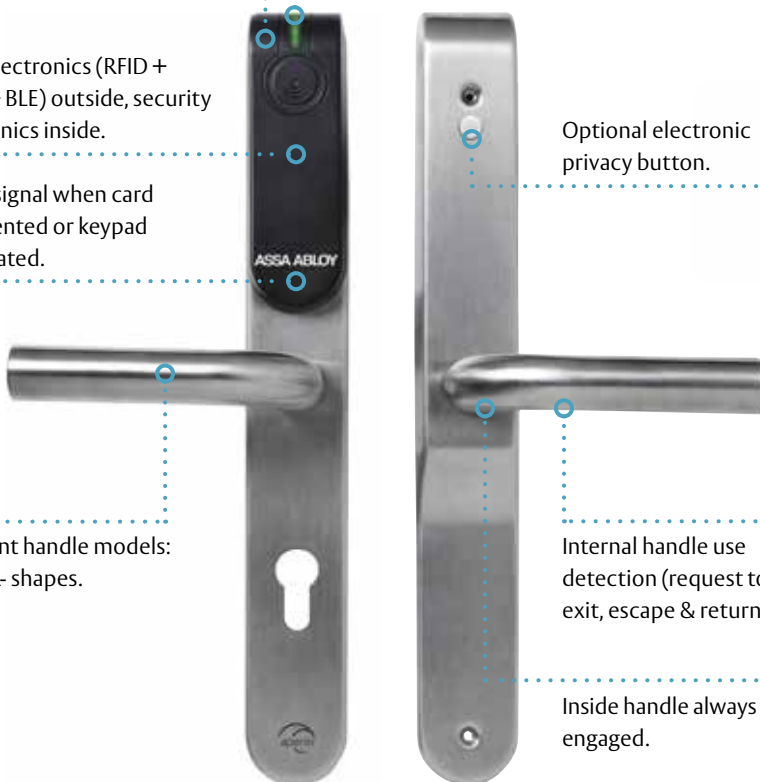
Different handle models: U and L-shapes.

Inbuilt LED instantly communicates if access is granted or denied.

Optional electronic privacy button.

Internal handle use detection (request to exit, escape & return).

Inside handle always engaged.



### Easy integration

Aperio E100 works seamlessly with access control systems integrated to Aperio via AADP protocol or Wiegand hub. No database integration required.



### Quick installation

Minimal drilling. Interconnecting cable.



### Flexibility

Can be used with all European (DIN) mortise locks – in wooden, steel and tubular-frame doors (and glass doors).



### Convenience

Aperio E100 reads industry-leading RFID credentials, as well as mobile (NFC and BLE).



### Privacy function (optional)

Electronic privacy button when pressed/ enabled allows the user to restrict access into the area. When engaged, the EAC may still grant access to specific users.

#### Versions:



Standard

Keypad

Premium

#### Cutouts:














EUR Cylinder

Swiss Cylinder

Blind

# Aperio® E100 EURO | For indoor use

## Technical data and features

		
	<b>Authentication</b>	CARD/Mobile, PIN, CARD/Mobile & PIN combined
	<b>Code</b>	PIN code managed by the access control system
	<b>RFID Technologies</b> (Based on reader type)	iCLASS, iCLASS SE, iCLASS Seos, MIFARE Classic, Mifare Classic SE, Mifare Ultralight, Mifare Plus, Mifare DESFire 0.6, Mifare DESFire EV1, Mifare DESFire EV2, Mifare DESFire EV3 (EV2 and EV3 only in Legacy mode), Mifare DESFire SE, LEGIC® Advant, LEGIC® Prime, PicoPass, ISO 14443A UID, ISO 14443B UID, ISO 15693 UID. <b>Exceptions:</b> LEGIC-only reader available
	<b>RFID reading</b>	UID / Sector / Block / Application / File / LEGIC® Segment Data – Depending on the RFID technology
	<b>RFID Reading range</b>	Up to 4 cm
	<b>Mobile Technology</b>	NFC and BLE*
	<b>Approvals</b>	<b>Standard:</b> CE, UKCA, Fire EN 1634 <b>Premium:</b> CE, UKCA, EN 179, DIN18273
	<b>Dimensions</b>	312 × 41 × 10/20 mm (H × W × D)
	<b>Version</b>	Standard and Premium
	<b>Handle</b>	L-Shape, U-Shape
	<b>Surface</b>	Stainless steel brushed
	<b>Distance</b>	Blind, 70, 72, 74, 78, 85, 88, 90, 92, 94
	<b>Spindle</b>	Spindle 8 mm, 9 mm, 10 mm
	<b>Door leaf thickness</b>	Door leaf between 40 and 100 mm thick, in 10 mm increments
	<b>Backset</b>	> 40 mm
	<b>Mounting plate</b>	n/a
	<b>Battery</b>	1 × Lithium CR123A
	<b>Battery life (Based on reader type)</b>	30 openings per day for 50 months**
	<b>Emergency power</b>	Via micro-USB socket
	<b>Radio standard</b>	IEEE 802.15.4 (2.4 GHz)
	<b>Encryption (radio communication)</b>	AES 128 bits
	<b>Distance between the device and the hub</b>	Up to 25m depending on the building environment
	<b>Class of protection</b>	<b>Standard:</b> IP 52*** <b>Premium:</b> IP 54***
	<b>Operating temperature range</b>	0°C to 60°C
	<b>Relative humidity</b>	< 85% (condensation-free)
	<b>Status</b>	LED (red/green/orange) Buzzer
	<b>Door sensor information</b>	Internal handle use detection (request to exit, escape & return)
	<b>Communication interfaces</b>	Communication via radio (USB dongle) or Micro-USB cable (accessory)
	<b>Offline and Online operation modes</b>	Aperio Online; Aperio Offline; Standard OSS Offline
		* LEGIC version is not available with BLE ** Except LEGIC *** Outdoor environments may affect product operability (excessive humidity, salt, extreme temperatures)



### It includes:

- 1 escutcheon with battery (Lithium CR123A)
- Screws
- Drilling template
- Tool for inserting cables (for thicker doors)
- Installation instructions



### Communicates with:

- RS485 Communication Hub
- Aperio IP Communication Hub
- Wiegand Interface (Standard and advanced versions) Communication Hub

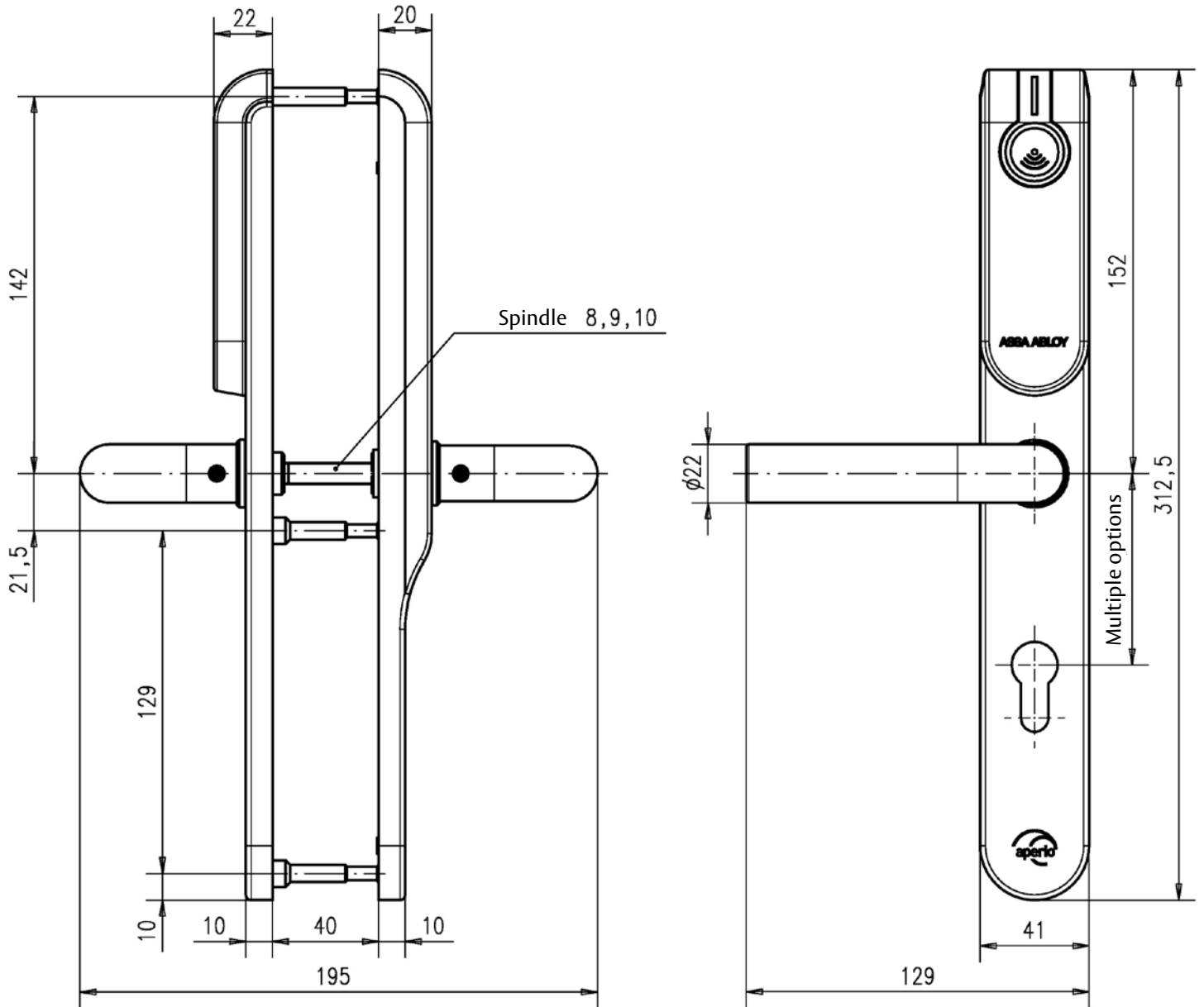


### Smart Credential Handling:

Up to 1000 users can be granted access even if the EAC is temporarily down.

# Aperio® E100 Wireless Escutcheon

## E100 EURO



**About ASSA ABLOY**

The ASSA ABLOY Group is the global leader in access solutions. Every day, we help billions of people experience a more open world.

ASSA ABLOY Opening Solutions leads the development within door openings and products for access solutions and homes, businesses and institutions. Our offering includes doors, door and window hardware, locks, access control and services.

**ASSA ABLOY Opening Solutions EMEIA**

Digital and Access Solutions

Dukes Court

Dukes Street

Woking GU21 5BH

United Kingdom