

# Profile- half cylinder eCLIQ N532

Without key



ASSA ABLOY



## Product description

- Power is supplied exclusively via the key (no battery in the cylinder)
- Available as rotary secured or electrical version (V=)
- Brass cylinder housing components
- Standard finish, satin nickel-plated (OF=MV)
- Basic cylinder length of 30 mm (A) (L=30) - Other installation lengths available - Adaptable housing kit
- Optional, differing basic cylinder length of 28 mm (A) (L=28)
- Standard locking cam position 45°; differing locking cam positions available in 30° and 45° steps
- Standard with rigid connection (VAR=STARR) and free adjustable locking cam set to 45° (SST=FLEX). Differing locking cam positions available
- Optionally available with double locking cam (VAR=K901310-X-BIFFAR)
- Optional with SST=FZG possible
- Free-wheeling function only without VAR=STARR
- Optionally available with anti drilling protection class 2 (AB=2)
- Cam made of break-proof, corrosion-resistant stainless steel
- Maintenance-free for up to 200,000 cycles
- Dust and rain cover available (SUR=3) IP55
- Splash-proof IP54
- Optionally VdS (SZ=VDS-BZ+, AB=3)
- Optionally DIN EN 15684 with anti drilling protection class 2 (SZ=DIN, AB=2)
- Optionally available for use in potentially-explosive atmospheres in Zone 1 (ATEX=II 2G EX IB IIB T4 Gb)
- Without fastening thread as standard
- Optionally with fastening thread (VAR=1901229+3+2MAL M4)

## Scope of delivery

- 1 profile half-cylinder
- 1 cylinder fixing screw M5 x 85 mm

## Variants that can be ordered

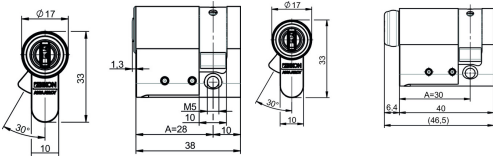
| Article number | OF= | L= | V= |
|----------------|-----|----|----|
| N532           | MV  | 30 | D  |
|                | MV  | 30 | E  |

## Suitable ASSA ABLOY products

| Order number    | Product   |
|-----------------|-----------|
| 9M37,AUS=PZ VOR | Mini safe |
| 9M38,AUS=PZ VOR | Mini safe |
| 9M39,AUS=PZ VOR | Mini safe |
| 9M40,AUS=PZ VOR | Mini safe |

## Accessories/Individual parts

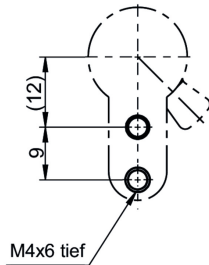
| Order number     | Product   |
|------------------|-----------|
| N109,V=E1        | Key eCLIQ |
| N109,V=E2        | Key eCLIQ |
| N109,V=E3        | Key eCLIQ |
| N109,V=B1/B2/B3  | Key eCLIQ |
| N109,V=PR/PSM/PN | Key eCLIQ |
| N110,V=E2        | Key eCLIQ |
| N110,V=E3        | Key eCLIQ |
| N110,V=PSM       | Key eCLIQ |
| N111,V=E1        | Key eCLIQ |
| N111,V=E2        | Key eCLIQ |
| N111,V=E3        | Key eCLIQ |



VAR=1901229-3-2MAL M4



VAR=K901310-X-BIFFAR



M4x6 tief

