

# FSA 8800 [S]

 Planet  
ASSA ABLOY

Planet finger protection cover profile FSA 8800 [S] enables fast installation, simple planning and a clean appearance.



# Cover profile FSA 8800 [S]

## The hinge-side cover profiles for almost all doors with roller hinges

Few components – quickly assembled

Even simpler – even more ingenious: The well-known finger protection program is being expanded with new hinge-side cover profiles with innovative fastening technology. This enables installation without time-consuming screw fittings and specific expertise, with a minimum of time required and a high degree of cost efficiency.

Dismantling, for example if work is required on the door element, is possible without tools. The cover profile is suitable for almost all applications and special cases, which makes planning extremely simple and convenient. To determine the appropriate model, only the diameter of the roller hinges is required.

### The advantages at a glance

- Simple installation in just a few minutes enables efficient on-site use
- No screw connections necessary on the door element and therefore perfect suitability for fire doors
- Maximum coverage of applications for lower storage costs
- System solution for almost all doors



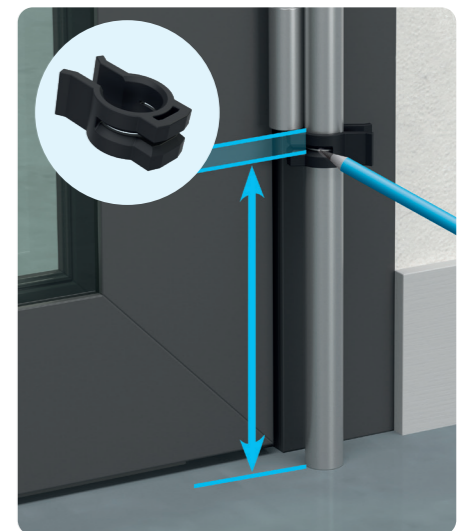
### 1,2,3 – done! Enormous time saving during assembly

1. Mounting the adhesive foot
2. Hang in cover profil
3. Slide adapter pin onto hinge and secure. Done!



The adhesive base is fitted even faster and with greater precision using the intelligent positioning tool.

The practical shortening gauge guarantees precisely fitting profiles.



Assembly film:

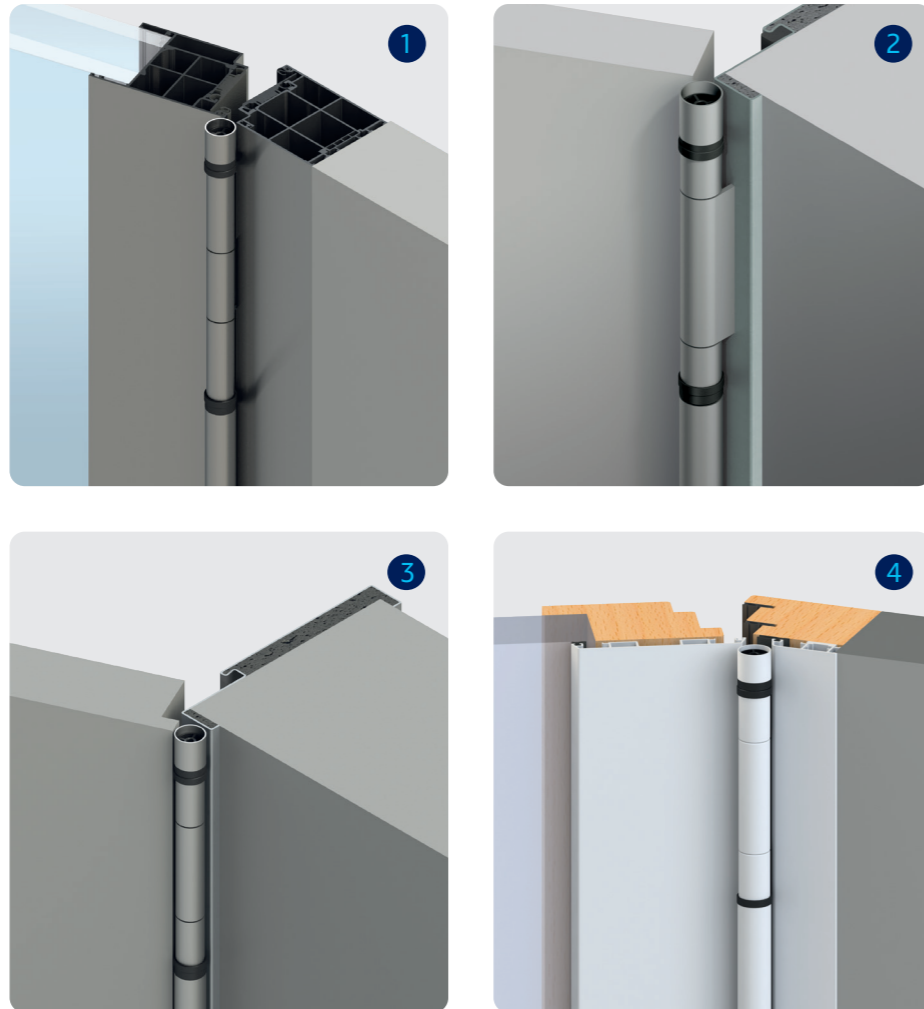


## Three profile sizes, countless applications With minimal planning effort for perfect inge-side finger protection!

Planet finger protection cover profiles FSA 8800 [S] fit into almost all rebated and flush-fitting doors with Ø16 – 22.5 mm roller hinges. Simply take measure of the diameter of the hinge roll to determine the appropriate cover profile, regardless of the type of hinge and the door.

### Some typical uses

1. Aluminium system door with roller hinge
2. Wooden door flush-mounted
3. Wooden door rebated
4. Wood/aluminium door



## The sets Cover profile FSA 8800 [S] (S16, S18, S20, S22)



### Lengths and colours

FSA 8800 [S] complete sets are available in two versions: for securing 2 or 3 segments. The profiles can be cut to the segment length. All parts required for installation are included in the sets.

The aluminium profiles are available in anodised or powder-coated finishes. Of course, all RAL and various anodised colours are available on request.

### Set for 2 segments

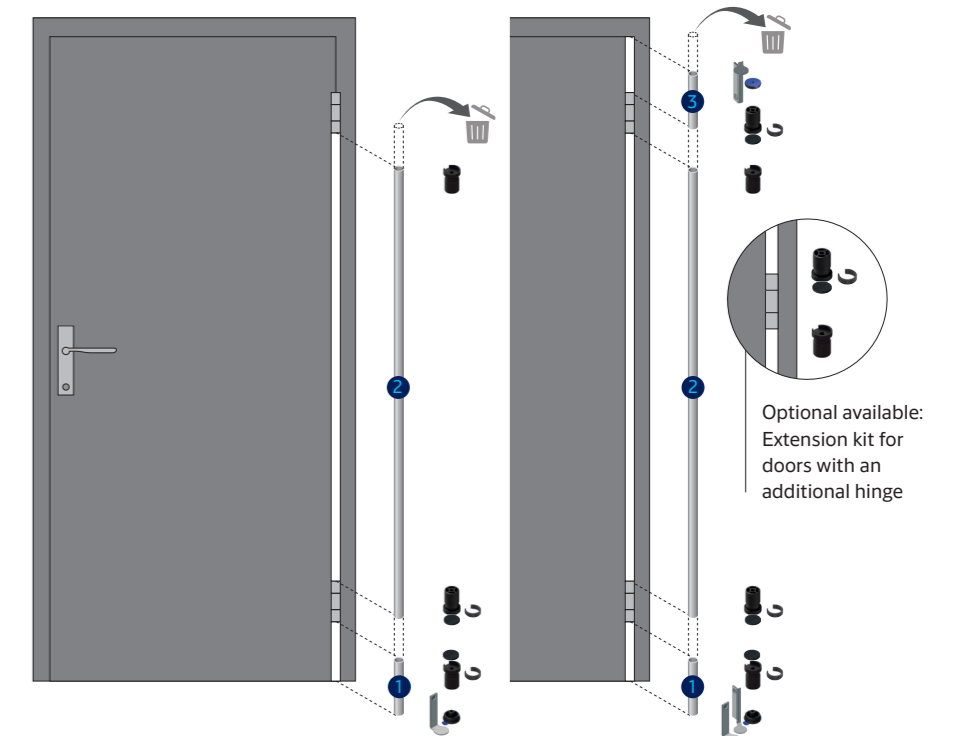
1755 mm (self-cut)

Securing of doors with 2 hinges  
from the floor to the top hinge

### Set for 3 segments

1980 mm (self-cut)

Securing doors with 2 hinges from  
the floor to the upper edge of the door



### Note

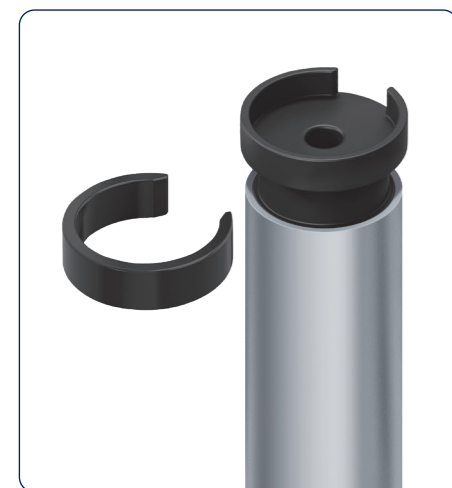
Bulk packaging, single parts and cut-to-size parts are shown on page 8/9.

# Cover profile FSA 8800 [S]

## Features



## Door types

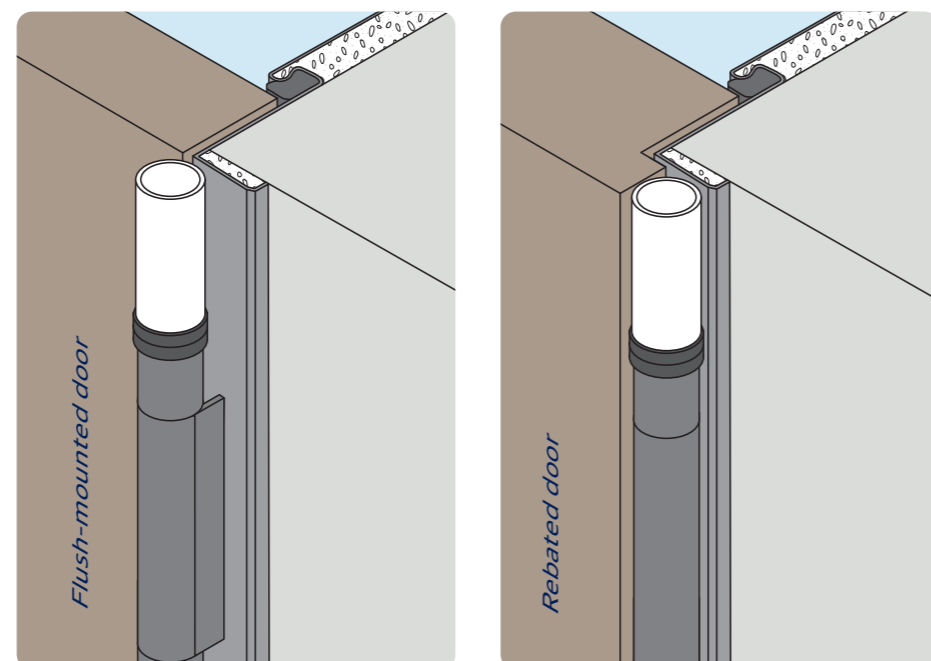
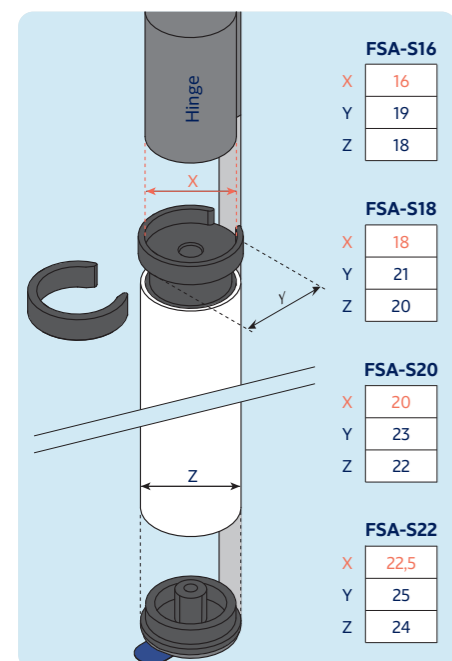


### Main features

- Cover profile for doors with roller hinges
- Screwless quick mounting
- Removal without tools
- Perfect for fire doors
- Maximum coverage of applications

### Scope of delivery

- Length 1755 mm (for 2 parts): Cover profiles with mounting accessories
- Length 1980 mm (for 3 parts): Cover profiles with mounting accessories
- Profiles per running metre cut to size: only cover profiles
- Bundle of 5 pieces (2500 mm each): cover profiles only



### Technical specifications

Length	max. 2500 mm
Can be shortened	Yes
Profile size	S16, S18, S20, S22 (for 16, 18, 20, 22 mm hinge)
Profile material	Aluminium

# FSA 8800 [S] – the sets incl. mounting accessories

With the 2-part sets for securing the segment under the lower door hinge and between the lower and upper hinges, you receive a 1755 mm high cover profile for self-cutting. With the 3-piece sets, the top segment of the door is also secured. The included cover profile for self-cutting is 1980 mm high. Both sets contain all required mounting accessories.

## Versions

### Cover profile FSA 8800 [S], for 2 parts (1755 mm)

for 2 parts

Profile colour	Art. no.
silver anodised EV1	F-8811-16
RAL 9016	F-8821-16
Matt anodised stainless steel (INOX)	F-8851-16
black C35 matt anodised	F-8861-16
RAL / EURAS (at choice)*	F-8891-16
silver anodised EV1	F-8811-18
RAL 9016	F-8821-18
Matt anodised stainless steel (INOX)	F-8851-18
black C35 matt anodised	F-8861-18
RAL / EURAS (at choice)*	F-8891-18
silver anodised EV1	F-8811-20
RAL 9016	F-8821-20
Matt anodised stainless steel (INOX)	F-8851-20
black C35 matt anodised	F-8861-20
RAL / EURAS (at choice)*	F-8891-20
silver anodised EV1	F-8811-22
RAL 9016	F-8821-22
Matt anodised stainless steel (INOX)	F-8851-22
black C35 matt anodised	F-8861-22
RAL / EURAS (at choice)*	F-8891-22

### Cover profile FSA 8800 [S], for 3 parts (1980 mm)

for 3 parts

Profile colour	Art. no.
silver anodised EV1	F-8812-16
RAL 9016	F-8822-16
Matt anodised stainless steel (INOX)	F-8852-16
black C35 matt anodised	F-8862-16
RAL / EURAS (at choice)*	F-8892-16
silver anodised EV1	F-8812-18
RAL 9016	F-8822-18
Matt anodised stainless steel (INOX)	F-8852-18
black C35 matt anodised	F-8862-18
RAL / EURAS (at choice)*	F-8892-18
silver anodised EV1	F-8812-20
RAL 9016	F-8822-20
Matt anodised stainless steel (INOX)	F-8852-20
black C35 matt anodised	F-8862-20
RAL / EURAS (at choice)*	F-8892-20
silver anodised EV1	F-8812-22
RAL 9016	F-8822-22
Matt anodised stainless steel (INOX)	F-8852-22
black C35 matt anodised	F-8862-22
RAL / EURAS (at choice)*	F-8892-22

## Options

Art. no.

Surcharge, for powder coating per colour (RAL K1 classic card) and order, payable once only, other colours on request

901200

Surcharge for anodising per colour (EURAS standard colours) and order, payable once only, other colours on request

901201



1755 mm profile,  
3 units adapter pins,  
2 units locking rings  
2 units shims made  
from foam rubber,  
1 unit adhesive base,  
1 unit cleaning cloth  
for bonding surfaces  
1 unit mounting  
bracket



1980 mm profile,  
4 unit adapter pins,  
3 units locking rings  
3 units shims made  
from foam rubber,  
2 units adhesive base,  
3 different mounting  
brackets for fixing the  
adhesive base for  
flush-mounted and  
rebated doors,  
1 unit cleaning cloth for  
bonding surfaces

# FSA 8800 [S] – individual composition ...

If the profiles are made to measure per metre, they are cut to the desired length. The matching mounting accessories can be put together individually. In the 5-piece bundle version, you receive 5 profiles, each 2500 mm long, to cut to size yourself. Here, too, you can select the required mounting accessories yourself and order them separately – ideal for always having a suitable quantity of material in stock.

## Versions

Cover profile FSA 8800 [S], per running metre cut to size (max. 2500 mm) cut to size

Profile colour	Art. no.	
S16	silver anodised EV1	F-8814-16
	RAL 9016	F-8824-16
	Matt anodised stainless steel (INOX)	F-8854-16
	black C35 matt anodised	F-8864-16
RAL / EURAS (at choice)*		F-8894-16
S18	silver anodised EV1	F-8814-18
	RAL 9016	F-8824-18
	Matt anodised stainless steel (INOX)	F-8854-18
	black C35 matt anodised	F-8864-18
RAL / EURAS (at choice)*		F-8894-18
S20	silver anodised EV1	F-8814-20
	RAL 9016	F-8824-20
	Matt anodised stainless steel (INOX)	F-8854-20
	black C35 matt anodised	F-8864-20
RAL / EURAS (at choice)*		F-8894-20
S22	silver anodised EV1	F-8814-22
	RAL 9016	F-8824-22
	Matt anodised stainless steel (INOX)	F-8854-22
	black C35 matt anodised	F-8864-22
RAL / EURAS (at choice)*		F-8894-22

Cover profile FSA 8800 [S], bundle x 5 (2500 mm each) 5-piece bundle

Profile colour	Art. no.	
S16	silver anodised EV1	901571
	RAL 9016	901572
	Matt anodised stainless steel (INOX)	901573
	black C35 matt anodised	901574
S18	silver anodised EV1	901469
	RAL 9016	901470
	Matt anodised stainless steel (INOX)	901471
	black C35 matt anodised	901472
S20	silver anodised EV1	901473
	RAL 9016	901474
	Matt anodised stainless steel (INOX)	901475
	black C35 matt anodised	901476
S22	silver anodised EV1	901477
	RAL 9016	901478
	Matt anodised stainless steel (INOX)	901479
	black C35 matt anodised	901480

Order made to measure: Minimum charge 1 linear meter  
\*Chargeable option required: Art. no. 901200 or 9012011

## Options

	Art. no.
Surcharge, for powder coating per colour (RAL K1 classic card) and order, payable once only, other colours on request	901200
Surcharge for anodising per colour (EURAS standard colours) and order, payable once only, other colours on request	901201



Please order the mounting accessories to suit your requirements from the adjacent list separately.

# ... with suitable mounting accessories

		Art. no.			Art. no.		
S16		<b>FSA 8800 S16 shortening gauge</b> Shortening gauge for cover profile FSA 8800 S16, plastic	901577	S20		<b>FSA 8800 S20 shortening gauge</b> Shortening gauge for cover profile FSA 8800 S20, plastic	901579
		<b>Adapter pin S16, 5 pcs</b> Adapter pin for cover profile FSA 8800, S16, black plastic, 5 pcs. in the bag	901566			<b>Adapter pin S20, 5 pcs</b> Adapter pin for cover profile FSA 8800, S20, black plastic, 5 pcs. in the bag	901453
		<b>Locking ring S16, 5 pcs.</b> Locking ring for cover profile FSA 8800, S16, black plastic, 5 pcs. in the bag	901567			<b>Locking ring S20, 5 pcs</b> Locking ring for cover profile FSA 8800, S20, black plastic, 5 pcs. in the bag	901456
		<b>Foam rubber shim S16, 5 pcs.</b> Shim 2 mm for cover profile FSA 8800, S16, black foam rubber, 5 pcs. in the bag	901568			<b>Foam rubber shim S20, 5 pcs.</b> Shim 2 mm for cover profile FSA 8800, S20, black foam rubber, 5 pcs. in the bag	901462
		<b>Adhesive base S16, 5 pcs.</b> Adhesive base for cover profile FSA 8800, S16, black plastic, incl. adhesive pad, 5 pcs. in the bag	901569			<b>Adhesive base S20, 5 pcs.</b> Adhesive base for cover profile FSA 8800, S20, black plastic, incl. adhesive pad, 5 pcs. in the bag	901459
		<b>Extension kit FSA 8800 S16, +1 hinge</b> Extension kit for cover profile FSA 8800, S16, for an additional hinge	901570			<b>Extension kit FSA 8800 S20, +1 hinge</b> Extension kit for cover profile FSA 8800, S20, for an additional hinge	901532
S18		<b>FSA 8800 S18 shortening gauge</b> Shortening gauge for cover profile FSA 8800 S18, plastic	901578	S22		<b>FSA 8800 S22 shortening gauge</b> Shortening gauge for cover profile FSA 8800 S22, plastic	901580
		<b>Adapter pin S18, 5 pcs</b> Adapter pin for cover profile FSA 8800, S18, black plastic, 5 pcs. in the bag	901452			<b>Adapter pin S22, 5 pcs</b> Adapter pin for cover profile FSA 8800, S22, black plastic, 5 pcs. in the bag	901454
		<b>Locking ring S18, 5 pcs</b> Locking ring for cover profile FSA 8800, S18, black plastic, 5 pcs. in the bag	901455			<b>Locking ring S22, 5 pcs</b> Locking ring for cover profile FSA 8800, S22, black plastic, 5 pcs. in the bag	901457
		<b>Foam rubber shim S18, 5 pcs.</b> Shim 2 mm for cover profile FSA 8800, S18, black foam rubber, 5 pcs. in the bag	901461			<b>Foam rubber shim S22, 5 pcs.</b> Shim 2 mm for cover profile FSA 8800, S22, black foam rubber, 5 pcs. in the bag	901463
		<b>Adhesive base S18, 5 pcs.</b> Adhesive base for cover profile FSA 8800, S18, black plastic, incl. adhesive pad, 5 pcs. in the bag	901458			<b>Adhesive base S22, 5 pcs.</b> Adhesive base for cover profile FSA 8800, S22, black plastic, incl. adhesive pad, 5 pcs. in the bag	901460
		<b>Extension kit FSA 8800 S18, +1 hinge</b> Extension kit for cover profile FSA 8800, S18, for an additional hinge	901531			<b>Extension kit FSA 8800 S22, +1 hinge</b> Extension kit for cover profile FSA 8800, S22, for an additional hinge	901533

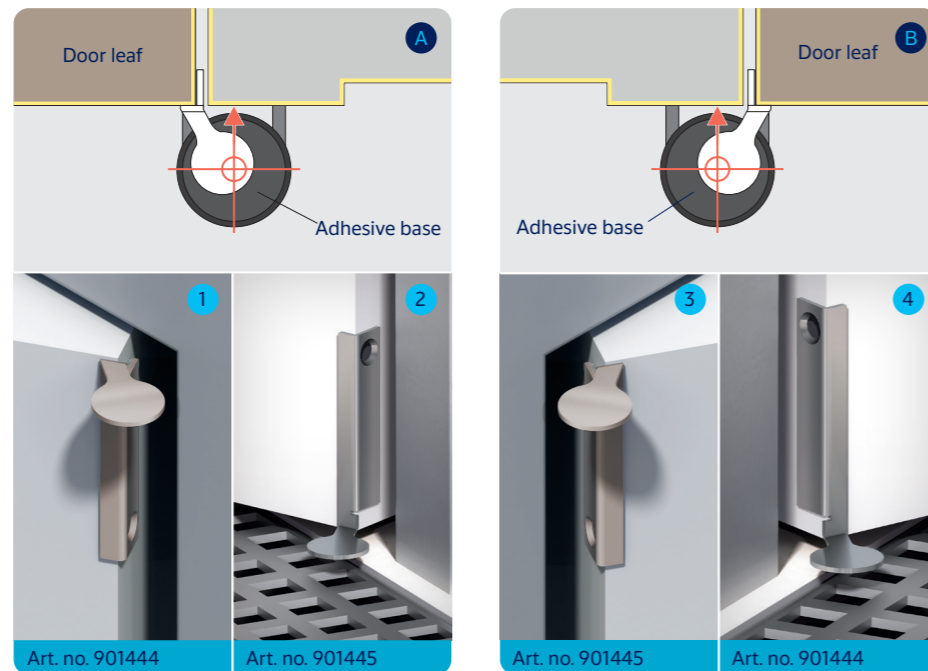
		Art. no.	
S16 S18 S20 S22		<b>Extension kit mounting bracket for flush-mounted doors, left/right</b> Extension kit mounting bracket for flush-mounted doors, left/right, 1 piece each, in the bag	901582
		<b>Mounting bracket for fixing the adhesive base for flush-mounted doors, left, 5 pcs</b> Mounting bracket for FSA 8800 [S], for flush-mounted doors, left, 5 pcs. in the bag	901445
		<b>Mounting bracket for fixing the adhesive base for flush-mounted doors, right, 5 pcs</b> Mounting bracket for FSA 8800 [S], for flush-mounted doors, right, 5 pcs. in the bag	901444
		<b>Mounting bracket for fixing the adhesive base for rebated doors, symmetrical, 5 pcs.</b> Mounting bracket for FSA 8800 [S], for rebated doors, symmetrical, 5 pcs. in the bag	901446
		<b>Positioning tool FSA 8800 [S] for adhesive base</b> Positioning tool for adhesive base for FSA 8800 [S], 1 unit in plastic tube	901451
		<b>Planet installation box, incl. carrying strap</b> Planet installation box, incl. carrying strap, stable wooden box with saw guide made of metal	901301

## Use of the mounting brackets for flush-mounted doors on the left/right for mounting on the door leaf or on the frame for fixing the adhesive base

**Situation A/B:**  
**Flush-mounted door with hinge pivot in front of the frame**  
 Asymmetric mounting bracket is fixed to the door leaf

1/3 Fastening top segment from hinge to upper edge of door leaf (included in the 1980 mm set)

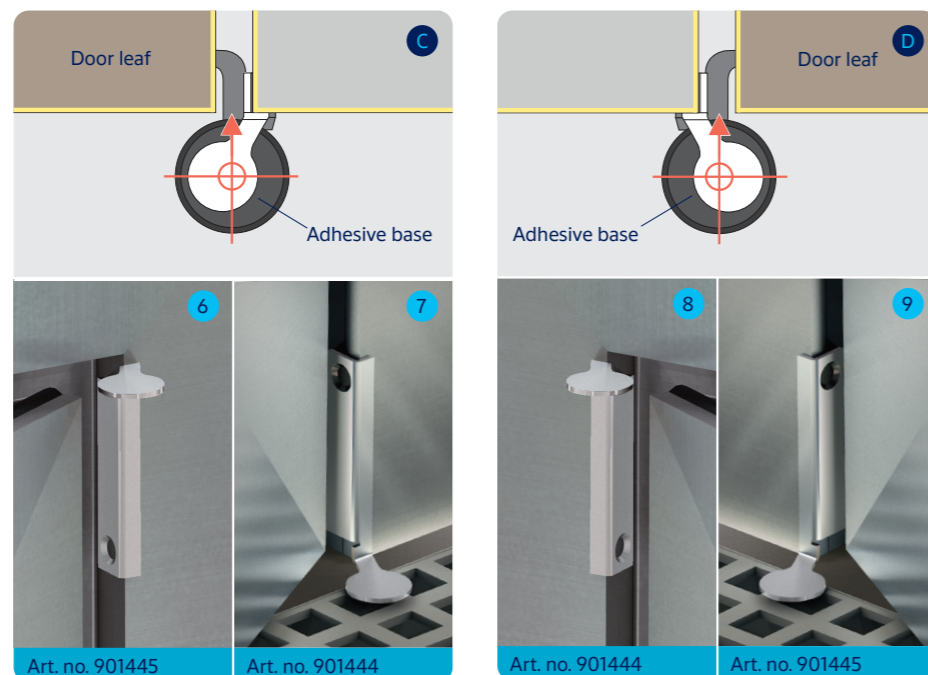
2/4 Fastening of the adhesive base for floors that are not to be glued (included in 1980 mm set, optionally available with 1755 mm set)



**Situation C/D:**  
**Flush-mounted door with hinge pivot between frame and door leaf**  
 Asymmetric mounting bracket is attached to the frame

6/8 Fastening top segment from hinge to upper edge of door leaf (included in the 1980 mm set)

7/9 Fastening of the adhesive base for floors that are not to be glued (included in 1980 mm set, optionally available with 1755 mm set)

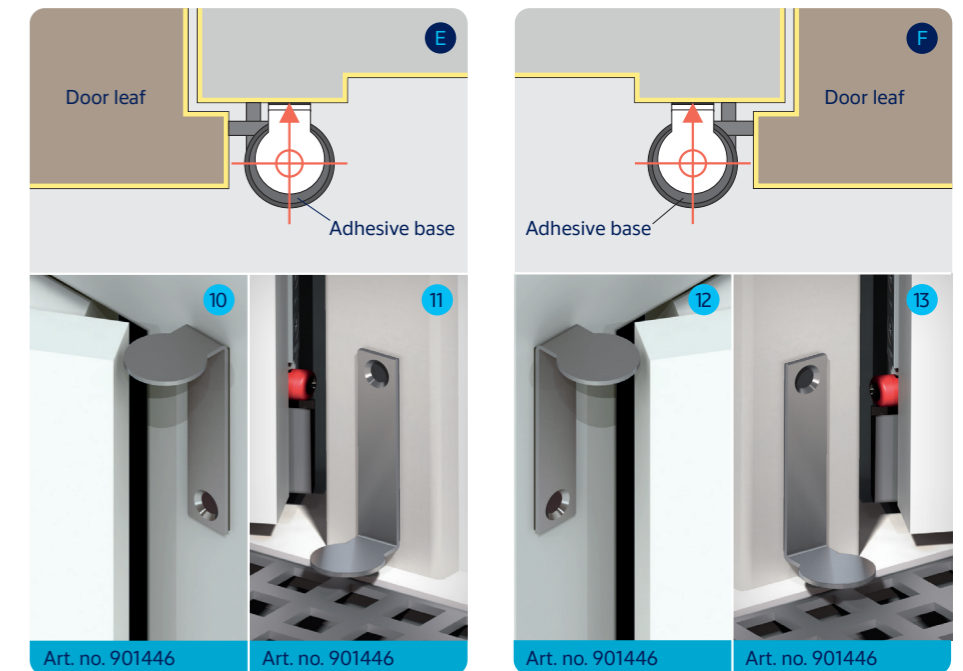


## Use of the mounting brackets for rebated doors for fastening the adhesive base and use of shims made of foam rubber

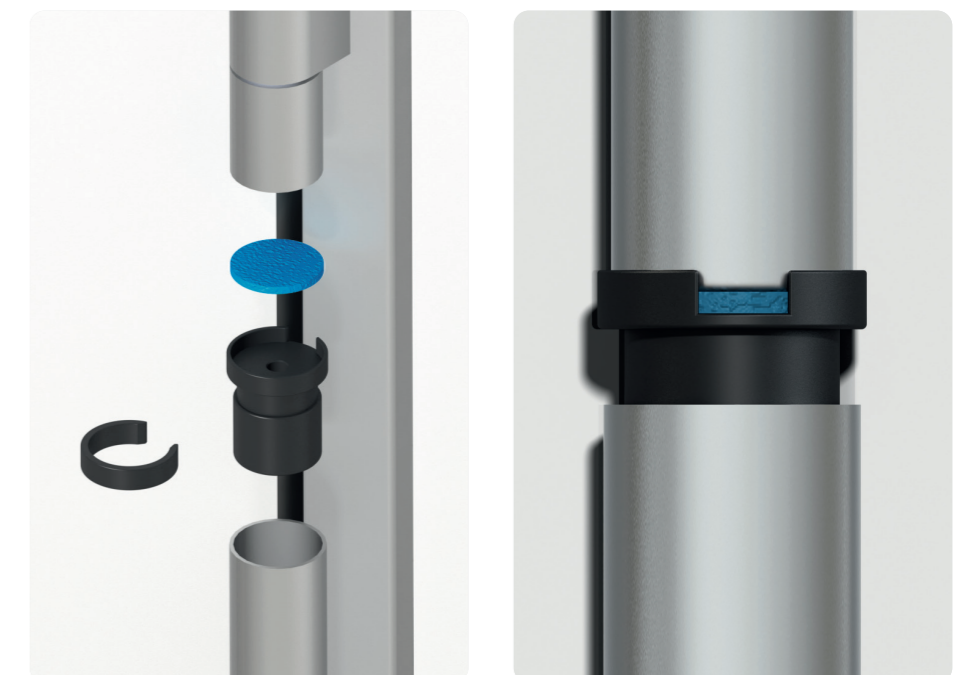
**Situation E/F:**  
**Rebated door**  
 Symmetrical mounting bracket is attached to the frame

10/12 Fastening top segment from hinge to upper edge of door leaf (included in the 1980 mm set)

11/13 Fastening of the adhesive base for floors that are not to be glued. (Optionally available for 1755 mm set and 1980 mm set)



**Shims for removing axial play**  
 The foam rubber windows (coloured blue) can be pressed together and compensate for cutting tolerances of the profiles.



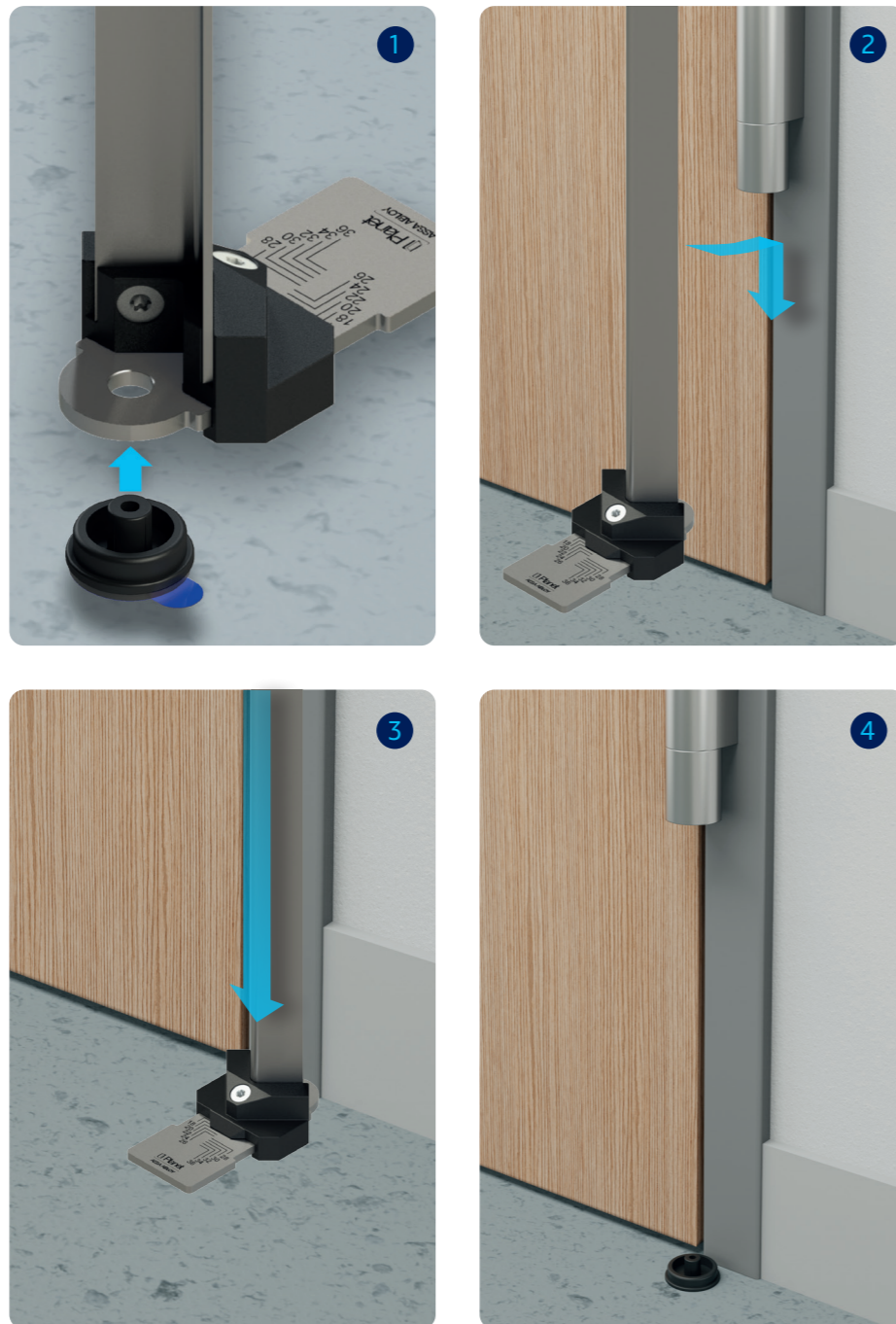
## Practical helper for finger protection installation: The positioning tool for the adhesive base

### Main features

- The adhesive base is fitted even faster and with greater precision using the intelligent positioning tool
- Adjustable for all hinge diameters

### Scope of delivery

- Positioning tool for adhesive base for FSA 8800 [S], 1 unit in plastic tube

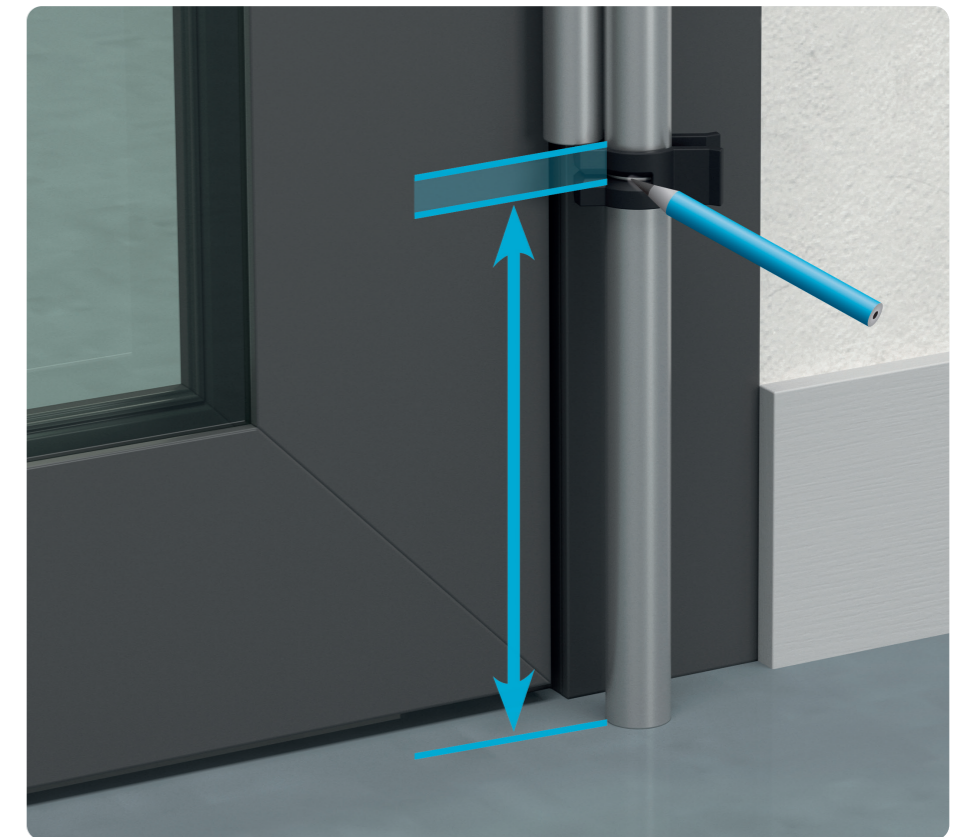


## Easy and convenient processing of the profiles: With the shortening gauge and the assembly box, you can cut the cover profiles to size quickly and precisely!



### Main features

- Effortless cutting to length without measuring
- No error-prone measuring required
- Guaranteed precisely fitting profiles
- Time saving
- Process-safe handling



### Main features

- Stable wooden box with saw guide at top, carrying strap
- The «helpful elf» for easy installation
- Precisely accurate length tool
- With built-in saw guide made of metal
- Cut edge is always a right angle
- Neat and straight cutting by hand
- Everything always to hand
- Inc. carrying strap



Fig. 1: Built-in saw guide

Fig 2: Precisely accurate length tool

# Roller protector FSR 6000 [Quick & Outdoor]

## Features



## Door types

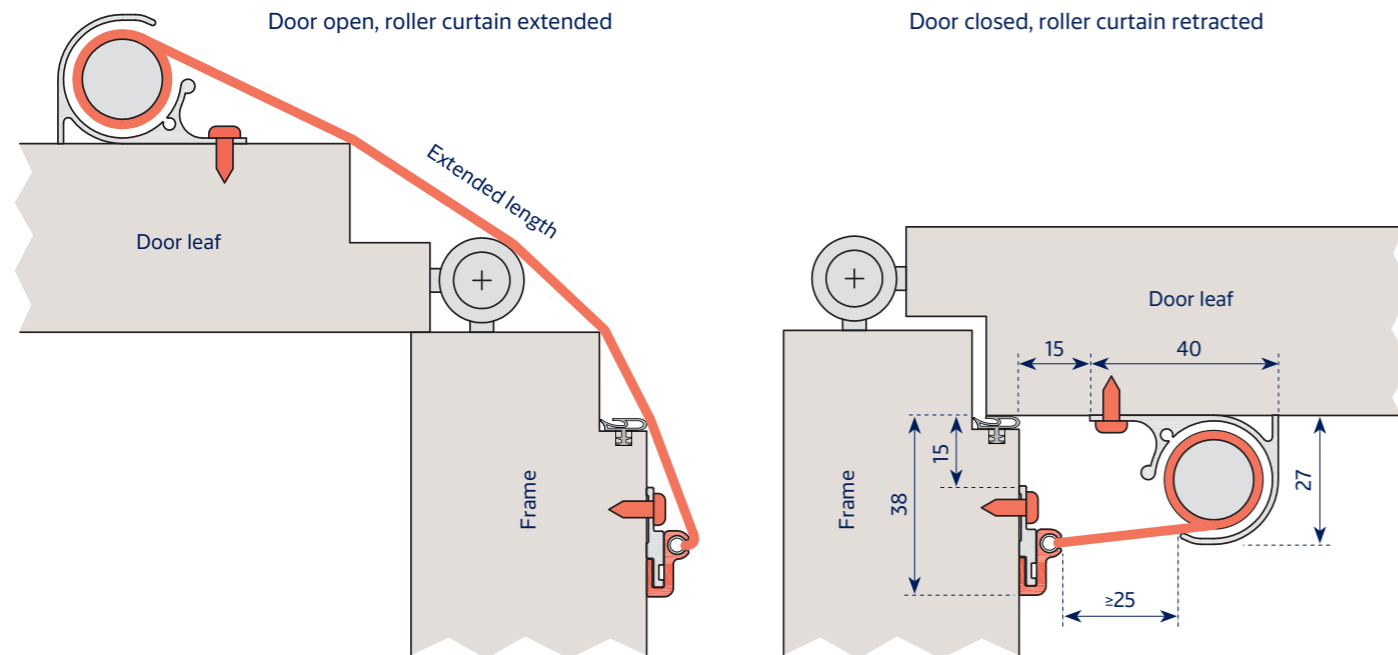


### Main features

- Quick fit roller protector
- For securing the non-hinge side on the secondary closing edge of swing doors made of wood, metal, PVC or glass
- Suitable for indoor and outdoor use
- Hard-wearing synthetic fibre fabric: washable, difficult to ignite B1, UV resistant
- Easy clip-on system
- Fixing screws concealed
- Housing position easy adjustable (elongated holes)
- Suitable for almost all doors
- Certified and supervised quality (MPA)
- 2'000'000 test cycles

### Incl. accessories

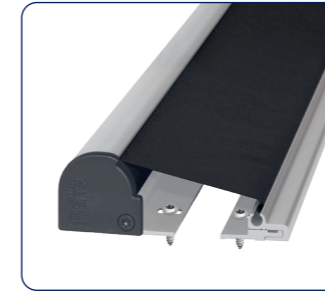
- Universal screws



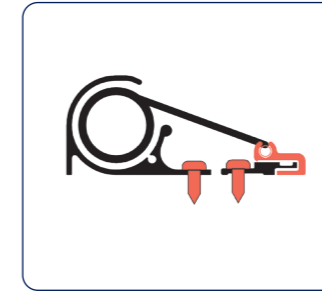
### Technical specifications

Material	Housing: aluminium, cloth: Synthetic fibre
Length	min. 310 mm to max. 2500 mm
Can be shortened	No
Draw out length	260 mm or 330 mm

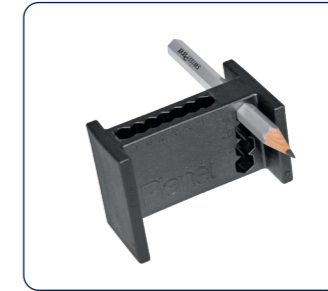
# Roller protector FSR 6000 [Quick & Outdoor] versions / options / accessories



Side view, screws concealed



Fastening screws concealed (not visible)



Error-free, time saving marking-out – with Planet marking aid



Roller protector FSR 6000 [Quick]

## Versions

### Roller protector FSR 6000 [Quick], 1925 mm

Housing colour	Art. no.
silver anodised EV1	F-6111
RAL 9016	F-6121
RAL 9007	F-6131
RAL 7016	F-6141
Matt anodised stainless steel (INOX)	F-6151
black C35 matt anodised	F-6161
RAL / EURAS (at choice)*	F-6191

### Roller protector FSR 6000 [Quick], made to easure (per linear meter)

Housing colour	Art. no.
silver anodised EV1	F-6113
RAL 9016	F-6123
RAL 9007	F-6133
RAL 7016	F-6143
Matt anodised stainless steel (INOX)	F-6153
black C35 matt anodised	F-6163
RAL / EURAS (at choice)*	F-6193

### Roller protector FSR 6000 [Quick], 2015 mm

Housing colour	Art. no.
silver anodised EV1	F-6112
RAL 9016	F-6122
RAL 9007	F-6132
RAL 7016	F-6142
Matt anodised stainless steel (INOX)	F-6152
black C35 matt anodised	F-6162
RAL / EURAS (at choice)*	F-6192

## Accessories

Accessories	Art. no.
Adhesive kit G, 2500 mm, for glass doors	901371
Adhesive kit S, for steel frames, 2500 mm	901370
Positioning aid, adhesive pads	901320
Hex pin wrench for roller protector	901322
Set of screws for FSR 6000 [Quick & Outdoor]	901366
Universal drill bit Ø3 mm	901331
Planet marking aid	901300
Mounting profile LP1, for doors with panic hardware	diverse
Base profile FSR RG1, for glass doors	diverse
Mounting profile standard, for FSR 6000 [Quick & Outdoor]	diverse

## Options

Options	Art. no.
Surcharge, white fabric	901203
Surcharge, red fabric	901204
Surcharge, blue fabric	901205
Surcharge, yellow fabric	901206
Surcharge, grey fabric	901207
Surcharge, black fabric XL 330 mm draw out length	901208
Surcharge, white fabric XL 330 mm draw out length	901209
Surcharge, red fabric XL 330 mm draw out length	901210
Surcharge, blue fabric XL 330 mm draw out length	901211
Surcharge, yellow fabric XL 330 mm draw out length	901212
Surcharge, grey fabric XL 330 mm draw out length	901213
Surcharge, anodising acc. to EURAS, per colour and order, payable once only	901201
Surcharge, for powder coating acc. to RAL K1, per colour and order, payable once only	901200

The ASSA ABLOY Group is the global leader  
in access solutions. Every day we help  
people to feel safer and more secure  
and to experience a more open world.

ASSA ABLOY (Schweiz) AG  
Drop-down seals  
& finger protection  
Untere Schwandenstrasse 22  
CH-8805 Richterswil

Tel. +41 43 266 22 22  
[www.planet.ag](http://www.planet.ag)

We reserve our right for technical modifications. PR.01:171/EN\_03/26