



SWISS MADE

KESO 9000Ω² with rhombic key profile in Insert technology

Patented security for large locking systems

KESO

ASSA ABLOY









Experience a safer
and more open world



KESO 9000Ω² stands for the new flexibility in the high-security sector

KESO 9000Ω² is the world's first locking solution that makes the rhombic Swiss key profile available for the Euro profile cylinder. This makes it extremely flexible and means it can also be used for international locations of large companies.

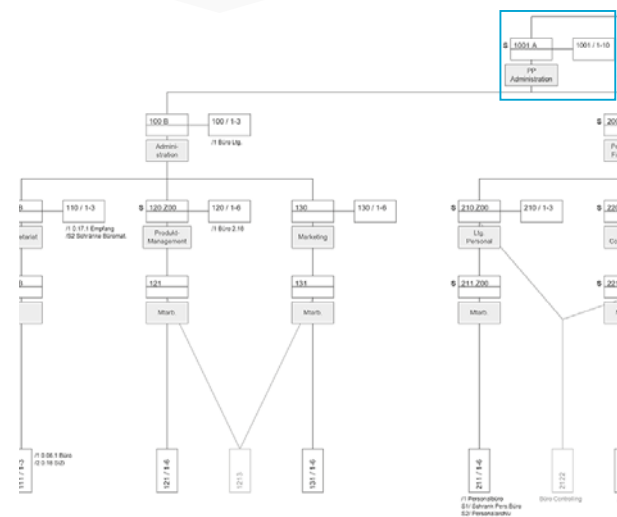
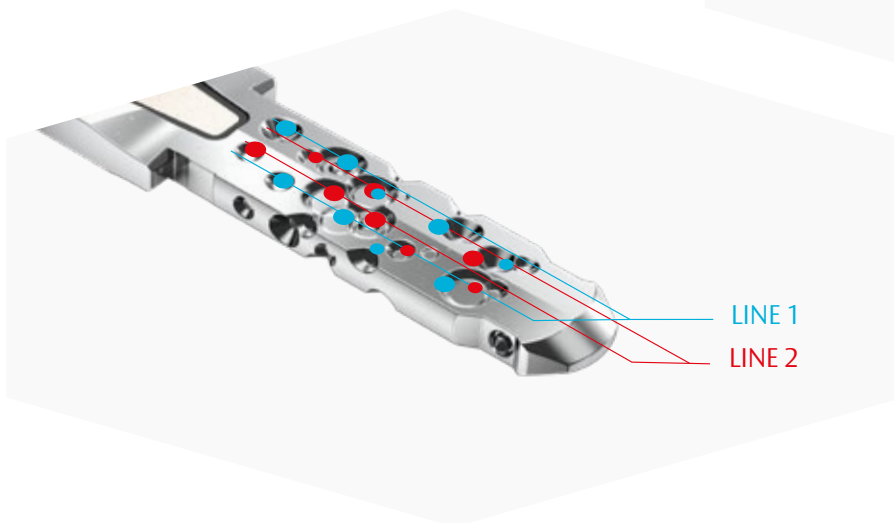
Benefits of the KESO 9000Ω² locking system:

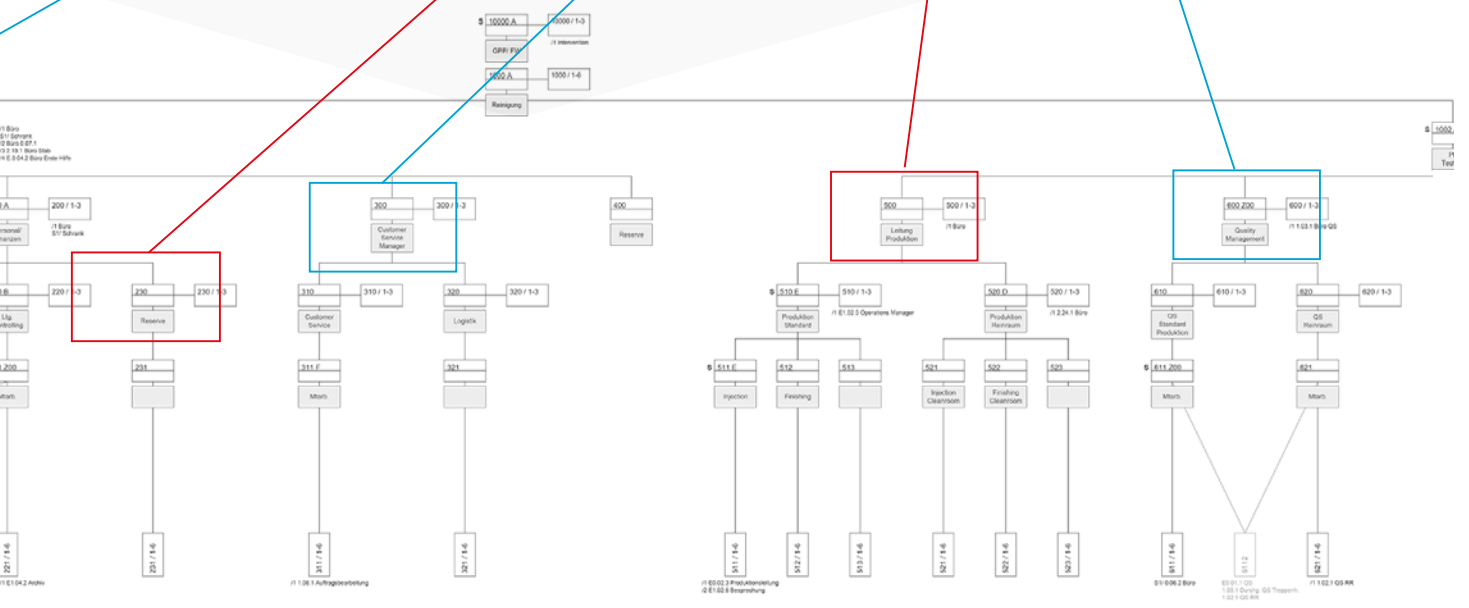
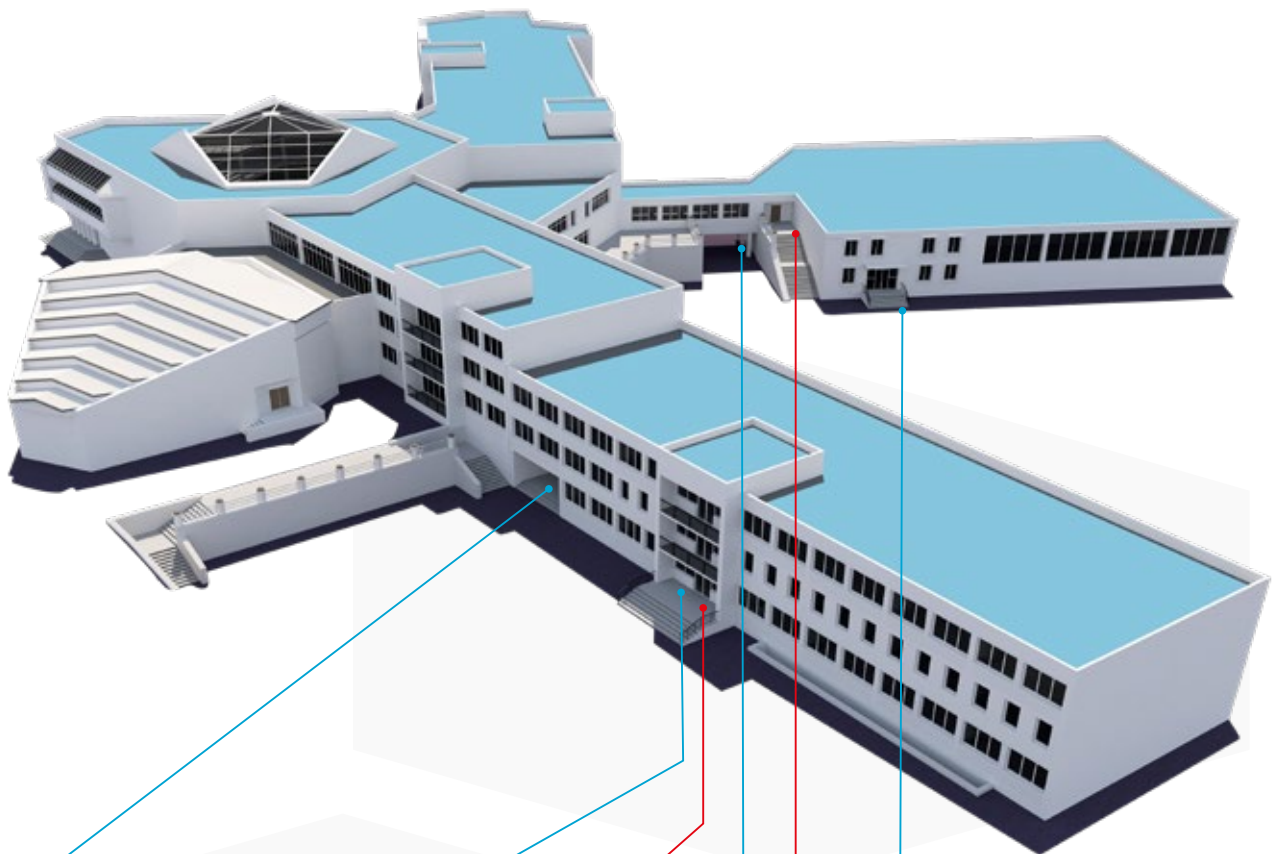
Rhombus		<ul style="list-style-type: none">• Ω²copy protection ensures that only authorised key copies work. The rhombic shape also makes it more difficult to create copies of keys.
Patent protection		<ul style="list-style-type: none">• Patent protection guarantees long-term investment protection and security against unauthorised keycopies: in Switzerland until 2041 and in Europe until 2034.
Locking concept planning™		<ul style="list-style-type: none">• Complex locking systems can be presented clearly and simply thanks to the many calculation options.
Combinatorics		<ul style="list-style-type: none">• There are no longer any limits with the new system: Euro profile and Swiss round profile cylinders can be easily combined.
Mechatronics		<ul style="list-style-type: none">• Integration into the Integra platform offers maximum flexibility: mechanical, mechatronic and digital components can be combined at any time.
Traceability		<ul style="list-style-type: none">• Locking events and access events for mechatronic locking systems can be documented seamlessly and digitally.
Copy protection		<ul style="list-style-type: none">• Swiss quality for the highest security requirements.
Manipulation protection		<ul style="list-style-type: none">• Strict standards protect against breaking, pulling and drilling.

Maximum flexibility in locking concept planning: high permutation options and scalability

Another distinguishing feature compared to other locking solutions is the high number of possible permutations with KESO 9000Ω². The locking configuration of the tumblers and the line offset make the system ideal for large and complex locking systems such as hospitals or large companies. KESO's locking concept planning makes it easy to display a complex locking system.

System : KESO Projekt Nr. .		S10000, 1000, S1001 S110, S220 Konferenzräume 520, S1720, S1722, 722 5510, S511, 511 311, S1740, 742																						
		A	B	C	D	E	F	G	H	I	J	K	L	M										
Allgemeine Zentralschliessung	KEKgenie	Z00	X	X	X	X	X	X	X	X	X	X	X	X										
Reinraum, Pers. Schleuse		Z01	X		X				X															
Konferenzräume		Z02	X	X	X						X													
Kopierer Büromaterial		Z03	X	X					X			X												
Lager Tanks		Z04	X		X						X													
Schlüsselkasten Lager Unterhalt		Z05	X		X	X			X			X												
Auftragsbearbeitung, Projectengineering		Z06	X				X			X														
		Z07	X		X							X												
		Z08	X		X							X												
		Z09	X				X	X																
Umzäunung		Z10	X									X												





Infinite combination options: Round and Euro profiles can be flexibly combined

The integration of the rhombic keyway into the round and Euro profile cylinder increases:

- manipulation protection
- differentiation from other safety systems

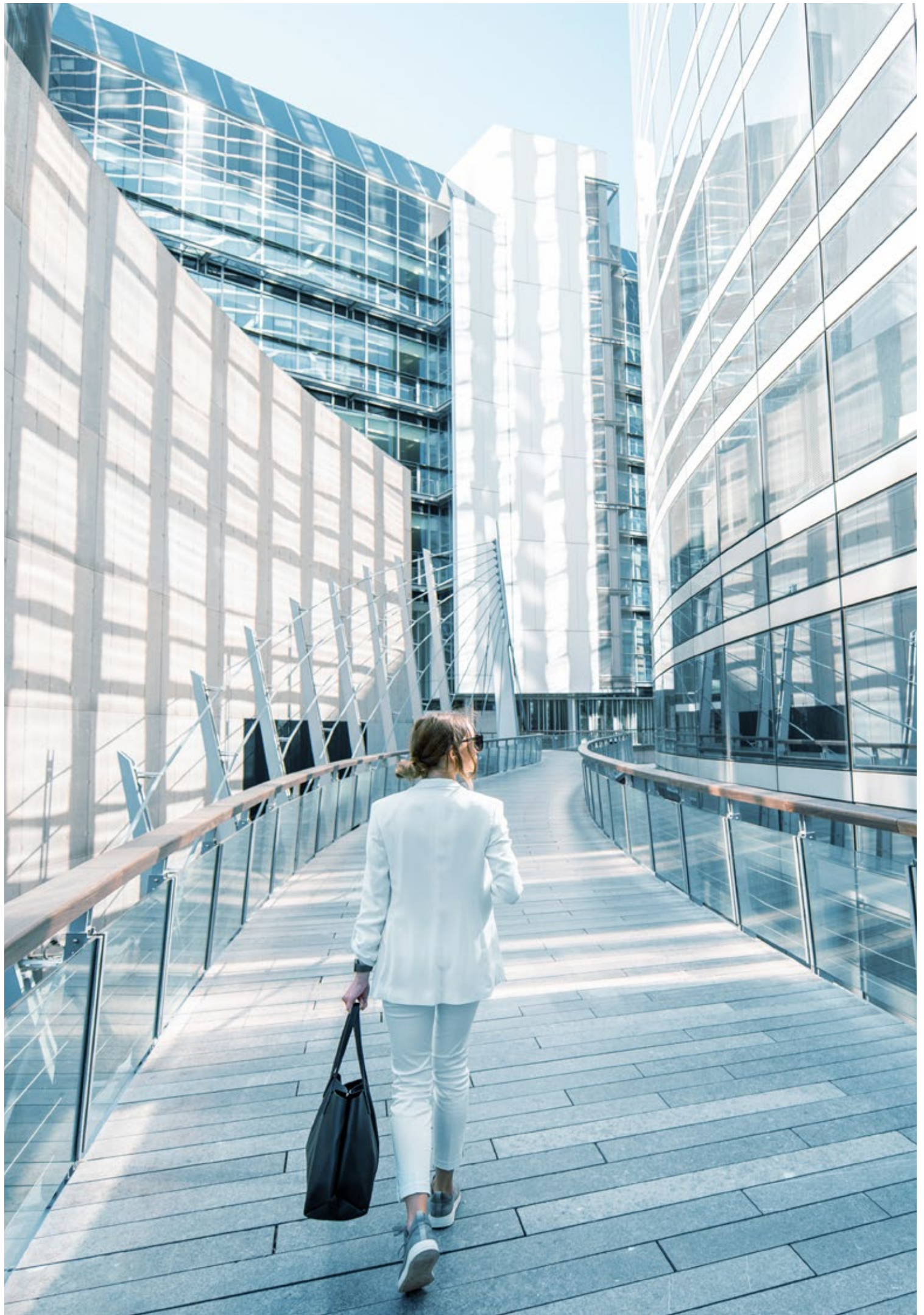
New systems for existing properties, including at various international locations, can also be easily integrated.



Security in rhombic form
thanks to the unique profile:
rhombic key blanks are not
freely available on the market.

The cylinder profiles of the KESO 9000Ω²
locking solution based on Insert technology
can be easily combined and fitted.





The ASSA ABLOY Group is the global leader in access solutions. Every day we help people to feel safer and more secure and to experience a more open world.

ASSA ABLOY
Opening Solutions

Subject to technical changes, PR.01.153/EC_04/2025

ASSA ABLOY (Schweiz) AG
Security systems
Untere Schwandenstrasse 22
CH-8805 Richterswil
Phone +41 44 787 34 34
www.assaabloy.com/ch