



CYS10 Sawn Key System

ASSA ABLOY
Opening Solutions

Create large master key systems with an extra layer of security

Durable, high-performance locks and cylinders with 6-pin technology provide the confidence that your building is secure, inside and out. One key can unlock a wide range of different locking points. The trusted sawn key design offers a convenient user experience. Double patent protection increases security.



Certified security

EN 1303:2015 Euro cylinders tested to 1 6 – B – C 6 D; including optional SKG*** certification plus rigorous testing at ASSA ABLOY labs. Security technology patent protected until 2037.



Attack resistance

Secure anti-pick design with 15kN pulling resistance, 5 minutes' drilling resistance, 3rd-party tested bump resistance, and optional anti-snap protection for additional security.



Reliable construction

Durable design with 96-hour corrosion resistance and tested for 300,000 lock/unlock cycles.

Experience a safer
and more open world

CYS10 Key



For all CYS10
locking points



With its trusted sawn key design and large keybow, the CYS10 key is convenient to use. Its long key neck allows the operation with thicker door escutcheons.

Two separate key copy protection patents provide an extra layer of security.

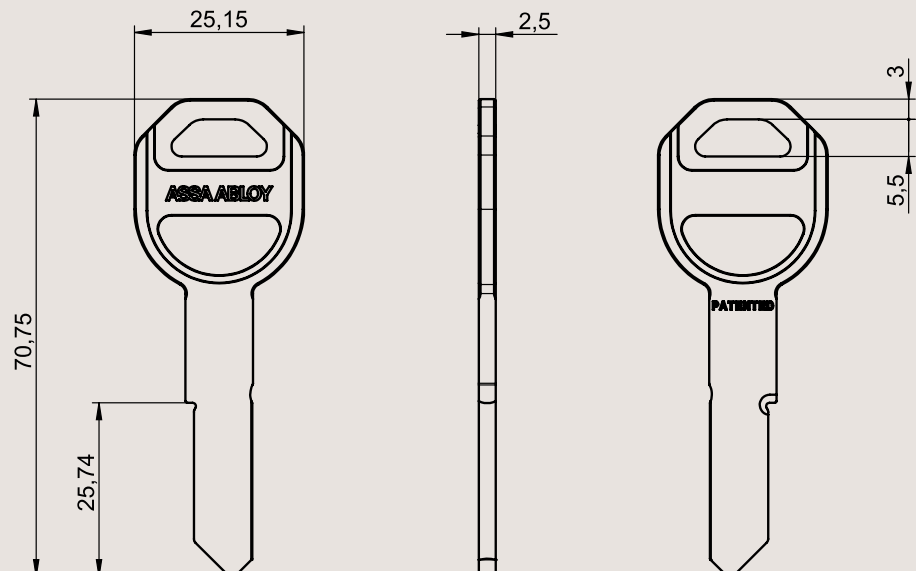


Patent protection
makes unauthorized
key copying illegal

Technical data and features

| | |
|---|--|
| Security | Patent-protected until 2037 |
| Keying | Sawn key design Master key system (MKS) Keyed alike (KA) Keyed to differ (KD) |
| Number of keys | MKS and KA: according to order; KD: 3 |
| Max. number of effective key differs | 144,729 |
| Max. number of MKS profiles | 63 |
| Exclusive profiles | Customer specific profiles available |
| Profile shape | Paracentric |
| Raw material | Nickel Silver |
| Finish | Nickel Silver |
| Key thickness | 2.5 mm |
| Key neck length | 17.2 mm |
| Weight | 20.3 g |

Dimensions in mm



CYS10 Double Euro Cylinder



For internal and
external doors



Optional: Gear wheel cam

Durable and secure, the CYS10 Double Euro Cylinder provides the protection you need to lock your building's doors – inside or out. Various optional features, such as free wheeling cam and gear wheel cam, make it ideal for a wide range of applications.



Certified security

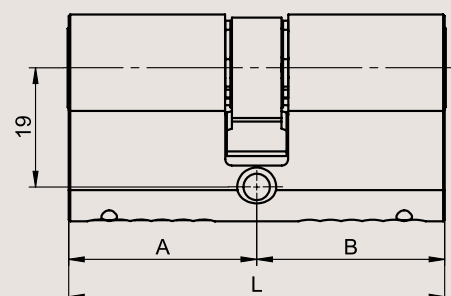
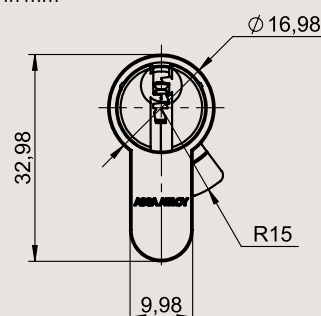


Protection against
cylinder attack

Technical data and features

| | |
|---|--|
| Security | SKG*** certified (optional) EN 1303:2015 tested, 1 6 – B – C 6 0/D (D optional) Cam DIN 18252 compliant |
| Attack resistance | Anti-pick Anti-bump (for MKS consult your master key specialist) Anti-drill: 5 minutes' drilling resistance (optional) Anti-pull: 15 kN pulling resistance (optional) Anti-snap (optional) |
| Keying | Sawn key design Master key system (MKS); Keyed alike (KA); Keyed to differ (KD) |
| Number of keys | MKS and KA: according to order; KD: 3 |
| Max. number of effective key differs | 144,729 |
| Max. number of MKS profiles | 63 |
| Number of pins | 6 |
| Raw material | Brass |
| Finish | Satin Nickel |
| Cylinder length | Minimum: 27 27 mm; Maximum: 90 90 mm Increments: 5 mm (starting from 30 30 mm) |
| Weight | 234 g (length 30 35 mm) |
| Optional functionality | Emergency clutch Free wheeling cam Gear wheel cam Anti-snap design Construction keying Local cam designs (French, Adriatic Jus) |

Dimensions in mm



CYS10 Thumbturn Double Euro Cylinder



For internal and
external doors



A reliable solution when privacy is required: CYS10 Thumbturn Cylinders securely lock doors and can quickly unlock to provide a faster exit. Various optional features, such as clutch release and classroom function, make it ideal for a wide range of applications.



Certified security

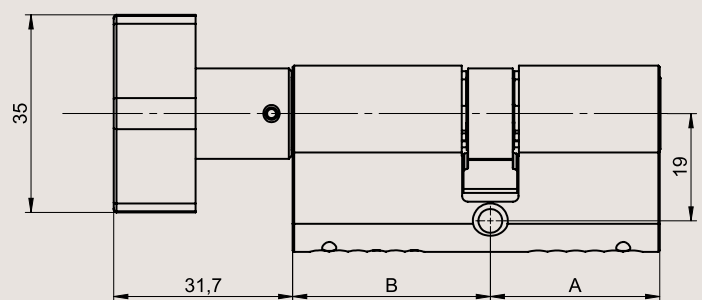
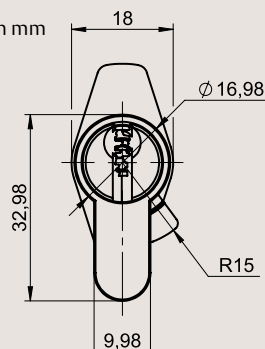


Protection against
cylinder attack

Technical data and features

| | |
|---|--|
| Security | SKG*** certified (optional) EN 1303:2015 tested, 1 6 – B – C 6 0/D (D optional) Cam DIN 18252 compliant |
| Attack resistance | Anti-pick Anti-bump (for MKS consult your master key specialist) Anti-drill: 5 minutes' drilling resistance (optional) Anti-pull: 15 kN pulling resistance (optional) Anti-snap (optional) |
| Keying | Sawn key design Master key system (MKS); Keyed alike (KA); Keyed to differ (KD) |
| Number of keys | MKS and KA: according to order; KD: 3 |
| Max. number of effective key differs | 144,729 |
| Max. number of MKS profiles | 63 |
| Number of pins | 6 |
| Raw material | Brass |
| Finish | Satin Nickel |
| Cylinder length | Minimum: 27 27 mm; Maximum: 90 90 mm Increments: 5 mm (starting from 30 30 mm) |
| Thumbturn dimensions | 16 x 35 x 31.5 mm (W x H x D) |
| Weight | 300 g (length 30 35 mm) |
| Optional functionality | Clutch release Classroom function Anti-snap design Construction keying Local cam designs (French, Adriatic Jus) |

Dimensions in mm



CYS10 Single Euro Cylinder



For internal doors



Optional: Adjustable cam

Highly durable cylinder with the performance to secure your building. Keep interior spaces secure with the CYS10 Single Euro Cylinder. The optional multi-position cam allows the cam to turn into the application's required position.



Certified security

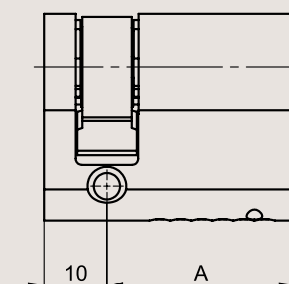
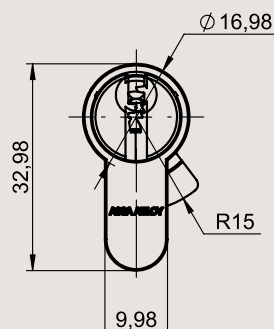


Protection against cylinder attack

Technical data and features

| | |
|---|--|
| Security | SKG*** certified (optional) EN 1303:2015 tested, 1 6 – B – C 6 0/D (D optional) Cam DIN 18252 compliant |
| Attack resistance | Anti-pick Anti-bump (for MKS consult your master key specialist) Anti-drill: 5 minutes' drilling resistance (optional) Anti-pull: 15 kN pulling resistance (optional) Anti-snap (optional) |
| Keying | Sawn key design Master key system (MKS) Keyed alike (KA) Keyed to differ (KD) |
| Number of keys | MKS and KA: according to order; KD: 3 |
| Max. number of effective key differs | 144,729 |
| Max. number of MKS profiles | 63 |
| Number of pins | 6 |
| Raw material | Brass |
| Finish | Satin Nickel |
| Cylinder length | Minimum: 27 10 mm; Maximum: 90 10 mm Increments: 5 mm (starting from 30 10 mm) |
| Weight | 161 g (length 30 10 mm) |
| Optional functionality | Adjustable cam: 8 positions Anti-snap design Construction keying |

Dimensions in mm



CYS10 Rim Cylinder



Additional security
for external doors



Secure entrances while at the same time, enabling anyone inside to make an easy exit. The CYS10 Rim Cylinder can be used with night latches or other locking devices which are operated from a tailbar.



Certified security

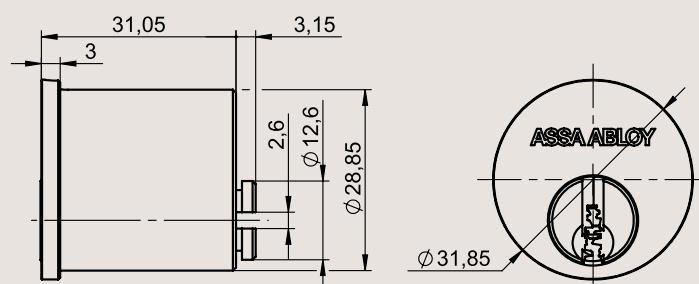


Protection against
cylinder attack

Technical data and features

| | |
|---|--|
| Security | EN 1303:2015 tested, 1 6 – B – C 6 0/D (D optional) |
| Attack resistance | Anti-pick Anti-bump (for MKS consult your master key specialist) Anti-drill: 5 minutes' drilling resistance (optional) Anti-pull: 15 kN pulling resistance (optional) |
| Keying | Sawn key design Master key system (MKS) Keyed alike (KA) Keyed to differ (KD) |
| Number of keys | MKS and KA: according to order; KD: 3 |
| Max. number of effective key differs | 144,729 |
| Max. number of MKS profiles | 63 |
| Number of pins | 6 |
| Raw material | Brass |
| Finish | Satin Nickel |
| Dimensions | Face diameter: 32 mm Body diameter: 29.5 mm Tailbar length: 54 mm |
| Weight | 210 g |

Dimensions in mm



CYS10 Screw-In Cylinder



For metal doors



The CYS10 Screw-In Cylinder secures main entry aluminium or metal doors with narrow stile, commonly used in commercial applications such as shop or warehouse doors.



Certified security

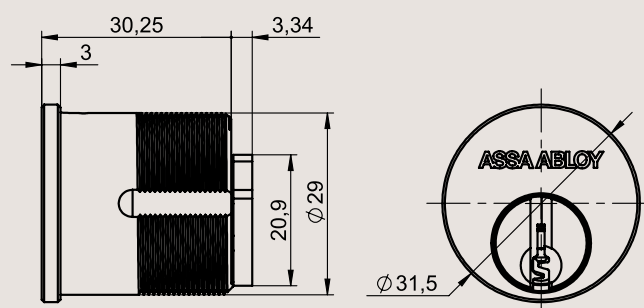


Protection against cylinder attack

Technical data and features

| | |
|---|--|
| Security | EN 1303:2015 tested, 1 6 – B – C 6 0/D (D optional) |
| Attack resistance | Anti-pick Anti-bump (for MKS consult your master key specialist) Anti-drill: 5 minutes' drilling resistance (optional) Anti-pull: 15 kN pulling resistance (optional) |
| Keying | Sawn key design Master key system (MKS) Keyed alike (KA) Keyed to differ (KD) |
| Number of keys | MKS and KA: according to order; KD: 3 |
| Max. number of effective key differs | 144,729 |
| Max. number of MKS profiles | 63 |
| Number of pins | 6 |
| Raw material | Brass |
| Finish | Satin Nickel |
| Dimensions | Face diameter: 31.5 mm Body diameter: 29.15 mm Tailbar length: 33.59 mm |
| Weight | 215 g |

Dimensions in mm



CYS10 Switch Cylinder



For switch boxes and control panels



The CYS10 Switch Cylinder is designed for switchboxes, control panels and similar applications. To unlock, a keyholder turns their key through 90 degrees, left or right, to complete the electrical circuit. The left/right setting can be adjusted with one screw on the cylinder.



Certified security

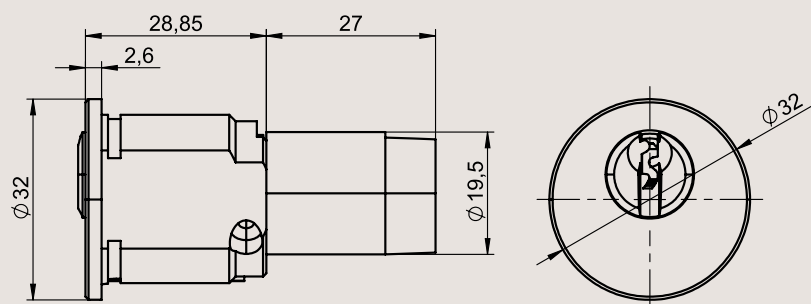


Protection against cylinder attack

Technical data and features

| | |
|---|--|
| Security | EN 1303:2015 tested, 1 6 – B – C 6 0 |
| Attack resistance | Anti-pick Anti-bump (for MKS consult your master key specialist) |
| Keying | Sawn key design Master key system (MKS) Keyed alike (KA) Keyed to differ (KD) |
| Number of keys | MKS and KA: according to order; KD: 3 |
| Max. number of effective key differs | 144,729 |
| Max. number of MKS profiles | 63 |
| Number of pins | 6 |
| Raw material | Brass, Plastic |
| Finish | Satin Nickel |
| Dimensions | Face diameter: 32 mm Body diameter: 26.9 mm Length: 56 mm Thread form: M27x1 mm |
| Weight | 165 g |

Dimensions in mm



CYS10 Cam Lock



For indoor and outdoor locking points



Keep sensitive documents and possessions safe. Secure and unlock your letterbox, cabinets and drawers with one single key. When in the unlocked position, the CYS10 Cam Lock retains the key to prevent your possessions being left at risk.



Certified security

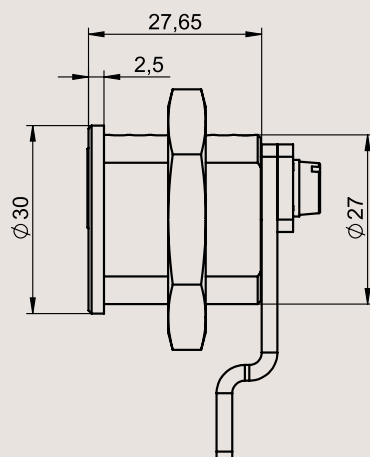


Protection against cylinder attack

Technical data and features

| | |
|---|--|
| Security | EN 1303:2015 tested, 1 6 – B – C 6 0 |
| Attack resistance | Anti-pick Anti-bump (for MKS consult your master key specialist) |
| Keying | Sawn key design Master key system (MKS) Keyed alike (KA) Keyed to differ (KD) |
| Number of keys | MKS and KA: according to order; KD: 3 |
| Max. number of effective key differs | 144,729 |
| Max. number of MKS profiles | 63 |
| Number of pins | 6 |
| Raw material | Brass |
| Finish | Satin Nickel |
| Dimensions | Face diameter: 30 mm Body diameter: 27 mm, laterally flattened to 20 mm |
| Weight | 210 g |

Dimensions in mm



CYS10 Padlock



For indoor and outdoor locking points



Optional: Dust cover

A trusted, robust padlock for multiple applications, inside or outdoors. Suitable for sheds, gates, fences, lockers, storage boxes, bike chains, and more.

When in the unlocked position, the CYS10 Padlock retains the key to prevent your possessions being left at risk.

The optional dust cover increases corrosion resistance to 240 hours.



Certified security

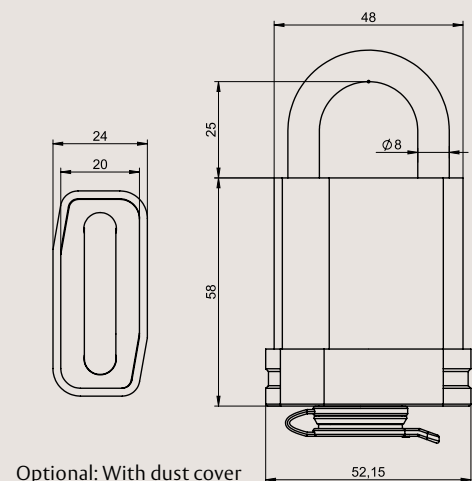
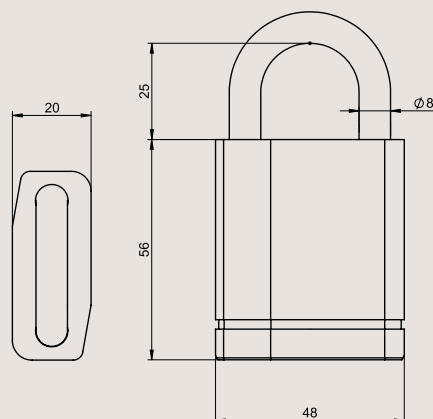


Protection against cylinder attack

Technical data and features

| | |
|---|--|
| Security | EN 12320:2012 tested – grade 3 IP67 (with dust cover) |
| Attack resistance | Anti-pick Anti-bump (for MKS consult your master key specialist) |
| Keying | Sawn key design Master key system (MKS); Keyed alike (KA); Keyed to differ (KD) |
| Number of keys | MKS and KA: according to order; KD: 3 |
| Max. number of effective key differs | 144,729 |
| Max. number of MKS profiles | 63 |
| Number of pins | 6 |
| Raw material | Body: Brass; Shackle: Hardened Boron Steel |
| Finish | Satin Nickel |
| Body dimensions | Width: 48 mm Length: 56 mm Thickness: 20 mm |
| Shackle diameter | 8 mm |
| Shackle clearance | 25 mm; 50 mm; 75 mm |
| Weight | 450 g (25 mm shackle clearance) |
| Optional functionality | Dust cover (240 hours salt spray test conformance) 25 mm Stainless Steel shackle Non key retaining |

Dimensions in mm

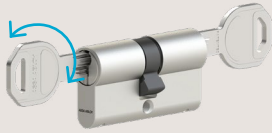


Optional: With dust cover

Glossary of optional CYS10 functionality

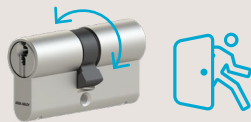


An aid to better
understanding



Emergency clutch

When a key is accidentally left in the keyway on one side, you can still operate the cylinder from the other.



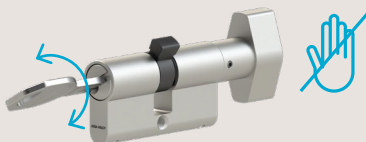
Free wheeling cam

The cam spins freely through 360 degrees and only engages when a key is inserted. When no key is inserted, none of the plugs operate with the cam. This feature is typically used with panic function, in emergency and panic exit doors (EN 179 and EN 1125).



Classroom function

The thumbturn can only unlock the cylinder (either turning clockwise or anti-clockwise) and cannot override a key being turned. Ensuring that the thumbturn cannot be used to lock users out, which is relevant for applications with children, such as in schools.



Clutch release

Insertion of the key in a clutch release thumbturn cylinder overrides the thumbturn if being held closed. A health and safety feature, ensuring that a user is not able to barricade themselves within a room. Suitable for a variety of applications, most notably the health sector.



Anti-snap protection

The cylinder is designed to break under attack, while leaving the inner plug intact. If the lock is attacked, the cylinder breaks in a secure, pre-defined place. With the main mechanism intact, the keyholder can still use their key to unlock the door, so the cylinder doesn't need immediate replacement.



Gear wheel

Cylinders with a gear wheel instead of a cam are used in doors with horizontal lock bar, for example. These locks are designed to work with gear wheels, not a cam.



Construction keying

One temporary key gives contractors access to several homes during building phase. Homeowner keys are protected from duplication when they move in. When inserted and turned, their key changes the cylinder's internal mechanism, permanently invalidating the construction key.



Multi-position cam

The cam can be adjusted to eight different positions within a 45-degree angle by pressing the cam's locking pin and turning the cam into the application's required position. For use with key switches.

The ASSA ABLOY Group is the global leader in access solutions. Every day, we help billions of people experience a more open world.

ASSA ABLOY
Opening Solutions

ASSA ABLOY Opening Solutions leads the development within door openings and products for access solutions in homes, business and institutions. Our offering includes doors, door and window hardware, locks, access control and service.

ASSA ABLOY Opening Solutions

Azerbaijan Office

Baku White City Office Building
25E Nobel Avenue AZ1025
Azerbaijan, Baku
Tel: +994 12 404 7880
info.az.openingsolutions@assaabloy.com

Kazakhstan Office

41 Kazybek bi str
Business Center "Park Palace", 1st Floor,
050010, Almaty,
Republic of Kazakhstan
info.kz.openingsolutions@assaabloy.com

🌐 www.assaabloy.com