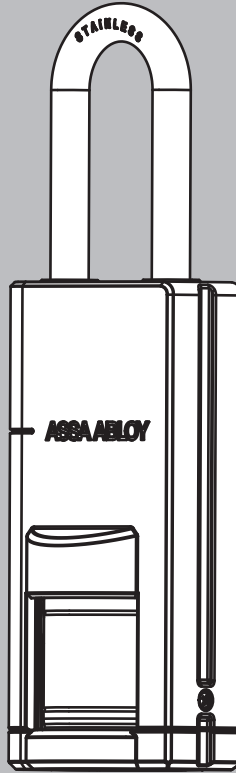




IP66*

*Only when
locked and in upright
position



Note:
For firmware updates on the P100B
please use the latest C100 BLE Firmware.

SCAN FOR DETAILED
PRODUCT INFORMATION

INCLUDED PARTS & ACCESSORIES (SUPPLIED)

Before starting, please ensure that all components listed below are supplied with the ordered product either P100B-100 or the P100B-200:

Aperio P100B Padlock

AU Part Number	Qty Per Pack	Description
P100B-100	1	Aperio P100B Padlock
P100B-100	1	Battery change tool

Aperio P100B Padlock with Chain

AU Part Number	Qty Per Pack	Description
P100B-200	1	Aperio P100B Padlock
P100B-200	1	Battery change tool
P100B-200	1	Chain
P100B-200	1	Clamp

OTHER PARTS & ACCESSORIES (NOT SUPPLIED)

Additional accessories are available for optional mounting & spare parts (not supplied):

AU Part Number	Qty Per Pack	Description
AH30-3-0	1	Accessories - Aperio Hub 1:16 RS485 Hub
AH40-4-0	1	Accessories - AH40 Aperio 1:64/16 IP (Ethernet) Hub

IMPORTANT SAFETY INSTRUCTIONS AND WARNINGS

1. Read and follow all instructions prior to installing and using this product.
2. These instructions or a full copy of these instructions should be provided to the user.
3. These instructions should be kept by the end user for future reference.
4. Obey and heed all warnings on the product and in the manual.
5. Ensure the functionality, specification and configuration of the P100B padlock is befitting for the intended application and environment. This may include in the event of a power failure and the ability to exit any building access point in an emergency.
6. Do not use this unit near excess water or moisture not typical to natural rainfall i.e. high pressure cold or hot water or submersion.
7. Do not use this unit in environments with excessive in-air dust that could accumulate and prevent correct operation.
8. Avoid prolonged exposure to direct sunlight or heat.
9. This product is not suitable for corrosive environments or environments with explosive or flammable atmospheres.
10. Only use attachments, accessories and fixings as specified by the manufacturer.
11. Clean with a dry cloth only, do not use chemicals.
12. Refer all servicing to qualified service personnel (not including battery replacement). Servicing or replacement is required when the unit has been damaged. This may include either mechanical or electrical issues. This may also include ingress of liquid spilled or objects which have fallen into the unit or if the unit has been exposed to excessive rain or moisture and no longer operates normally. Do not attempt to service this product yourself.
13. Opening or removing covers may expose you to dangerous voltages or other hazards.
14. To prevent risk of fire or electric shock ensure the power supply or system is suitable for this product.
15. Do not let objects or liquids enter the product as they may prevent correct operation, possibly preventing access or short-out parts that could result in a fire or electric shock.
16. Modification of this product (including unauthorized hardware, firmware or software) in any way may affect both its functionality and compliance status and will void any warranty and claim to compliance, ratings, or performance and becomes the sole responsibility of the user.

BATTERY SAFETY INFORMATION

1. Only the following type of batteries should be used: CR2 (Lithium).
2. Do not mix old and new batteries.
3. Do not use any other type of battery.
4. Adhere to battery information and warnings.
5. Remove batteries before storing the product for extended periods of time.
6. Do not dispose of old batteries in a fire as they may explode.
7. Do not open or mutilate the batteries. Released substances may be corrosive and may cause burns or injury to the eyes or skin and may be toxic if swallowed.
8. Exercise care when handling the batteries. Do not allow conductive materials such as rings, bracelets or keys to touch the batteries, otherwise a short circuit may cause the batteries and/or conductive material to overheat and cause burns.
9. If used on any type of transport including road, sea and air ensure that the battery conforms to the required regulations and is packed/fitted as per the regulations.

PROGRAMMING INSTRUCTIONS USING APERIO® HUB

Please refer to the instructions included with your hub; a copy can be found here:
<https://www.assaabloy.com/au/en/solutions/products/aperio-technology/aperio-communication-hub>

ELECTRICAL & RADIO COMMUNICATIONS SPECIFICATION

Battery

- Battery type: CR2 lithium battery with min. 800 mAh
- Battery technology: Lithium non-rechargeable
- Voltage: 3VDC

Aperio

- 2.4 GHz ISM Band, IEEE 802.15.4
- AES 128 Bit
- Wireless range (cylinder to hub: 5-25 m depending on location of Hub & environment)
- Worst case RF Power, EIRP: 213.8µW.
- Antenna: Internal single band.

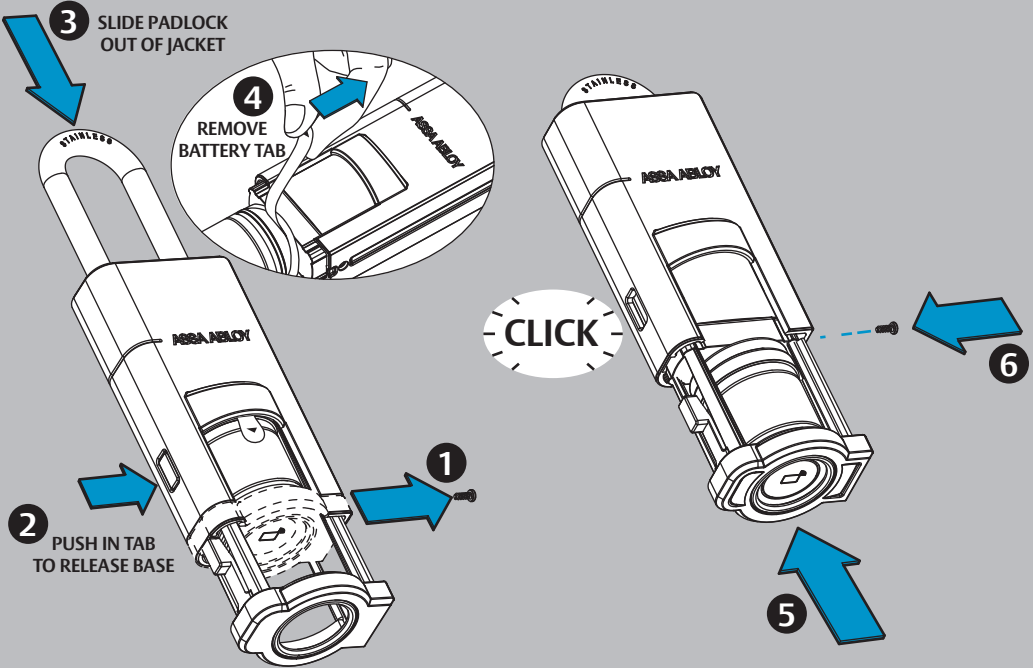
BLE

- 2.4 GHz ISM Band, IEEE 802.15.4
- AES 128 Bit
- Wireless range (cylinder to hub: 5-25 m depending on location of Hub & environment)
- Worst case RF Power, EIRP: 4.57µW.
- Antenna: Internal single band.

RFID

- 13.56MHz band.
- MIFARE Classic®, MIFARE Ultralight®, MIFARE® DESFire®, MIFARE Plus®, MIFARE® SE, MIFARE® DESFire® SE; iCLASS SE; iCLASS Seos®, iCLASS Seos Elite
- RFID Reading: UID / Sektor / Block / Application / File
- Reading card range: < 4cm
- Worst case RF Power, EIRP: 9.1nW
- Antenna: Internal single band.

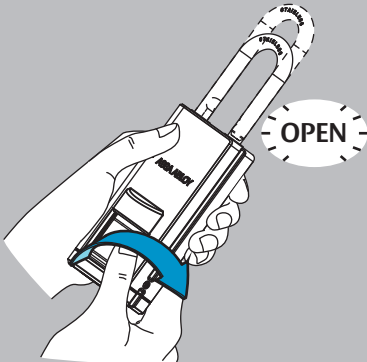
SETUP INSTRUCTIONS



SETUP FUNCTION



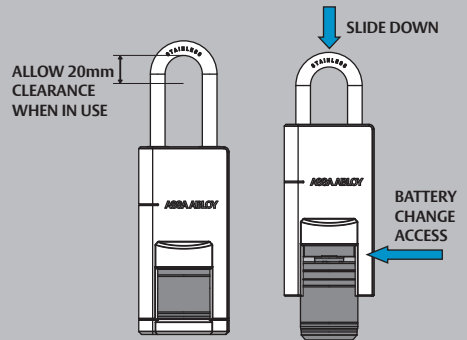
WAIT 2-3 SECONDS...



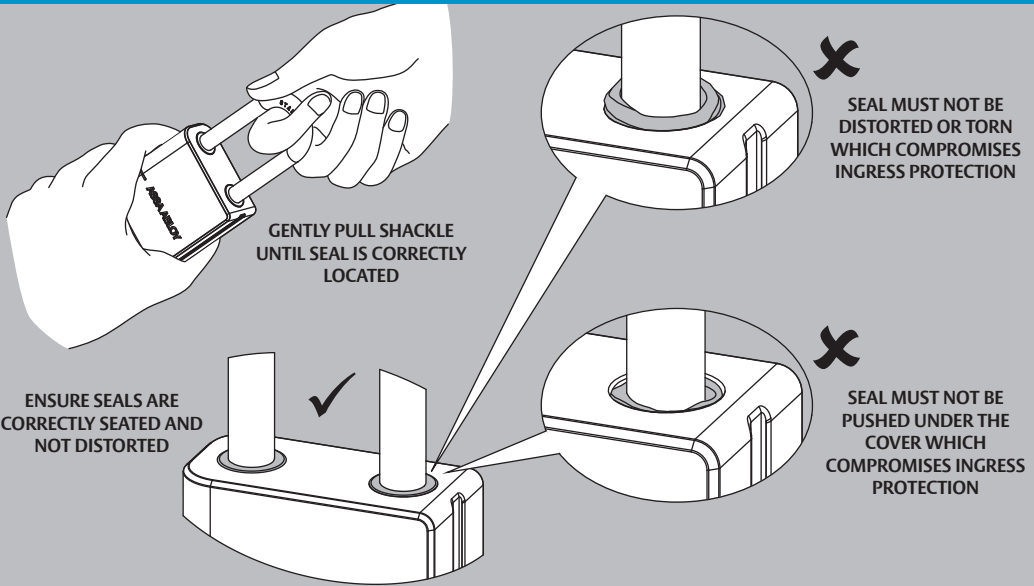
ATTENTION:
ALWAYS KEEP PADLOCK UPRIGHT DURING USE



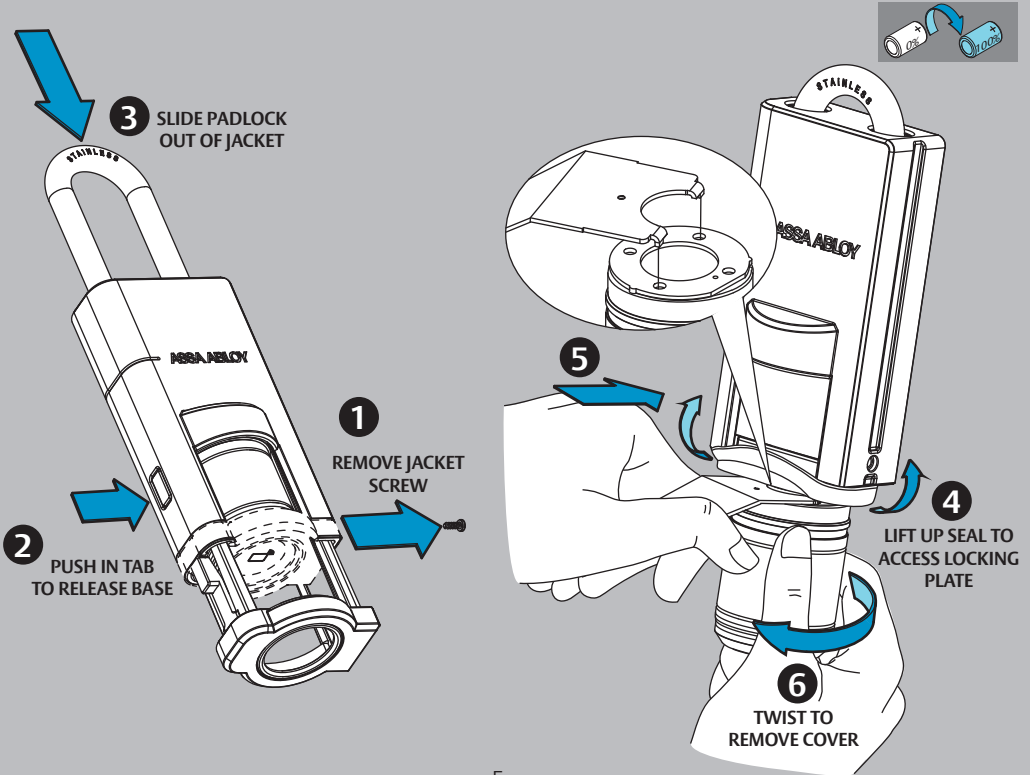
WHEN IN USE, ALLOW SHACKLE CLEARANCE OF AT LEAST 20mm FOR BATTERY CHANGE ACCESS



INGRESS PROTECTION

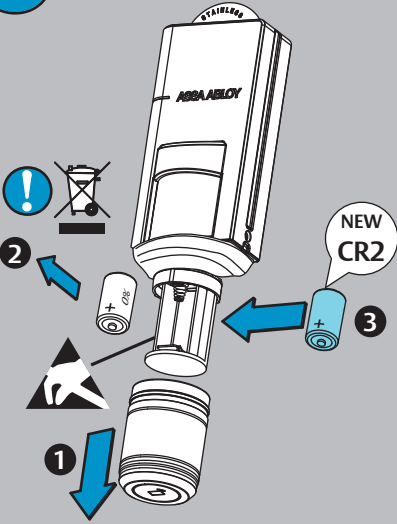


BATTERY REPLACEMENT - REMOVING FLAT BATTERY



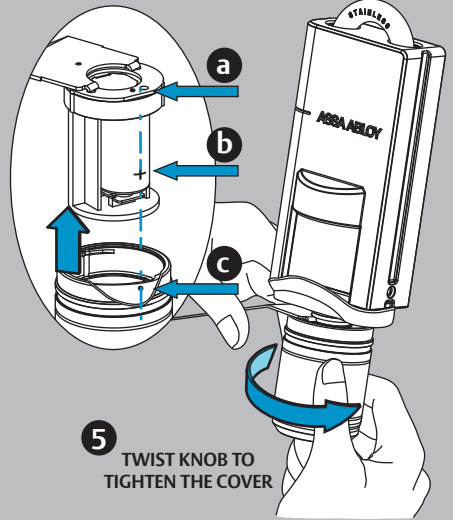


1



2

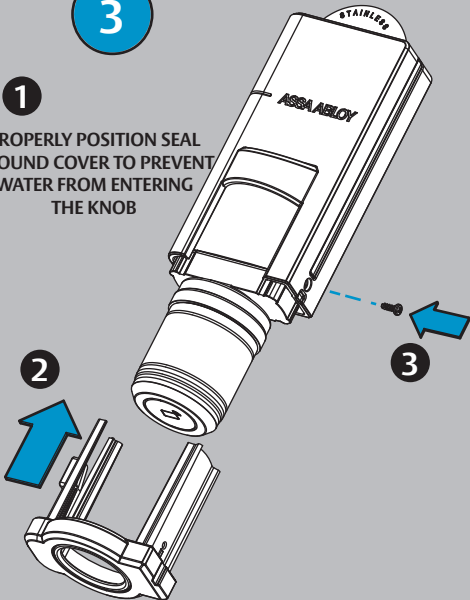
4 ENSURE ALIGNMENT OF THE FLAT EDGE OF THE LOCKING PLATE (a), BATTERY (b), AND DIMPLE (c).



5 TWIST KNOB TO TIGHTEN THE COVER

3

1 PROPERLY POSITION SEAL AROUND COVER TO PREVENT WATER FROM ENTERING THE KNOB



4



GENTLY PULL SHACKLE UNTIL SEAL IS CORRECTLY LOCATED

Shackle diameter	8.7mm
Operation temperature rating of Aperio cylinder	Operating temp: -20° to +55°C C Storage Temp: -20° to 70° C
Ingress Protection rating of Aperio cylinder	IP66 Where: IPNX – Indicates protection against no ingress of dust. IPXN – Indicates protection against water jets liquid ingress

MAINTENANCE, STORAGE, AND DISPOSAL

MAINTENANCE

Clean the external surfaces with a dry cloth only, do not use chemicals.

Replace battery when required following the instructions and warnings. A special tool is required to change the battery: Battery change tool is supplied with the Aperio P100B.

FAULTS, REPAIRS & RETURNS

This product contains no user serviceable parts. Please contact your local supplier.

STORAGE AND TRANSPORT

The product should be transported and stored in its original packaging.

DISMANTLE & ENVIRONMENT

BATTERIES

Batteries must not be disposed of with household waste and must be taken to battery collection points. Used batteries can contain harmful substances that, if not stored or disposed of properly, can harm the environment or your health. But batteries also contain important raw materials such as: Iron, zinc, manganese or nickel and can be recycled.



In the European Union, Norway, Iceland, and Liechtenstein: This symbol on the product, or in the manual and in the warranty, and/or on its packaging indicates that this product shall not be treated as household waste. Instead, it should be taken to an applicable collection point for the recycling of electrical and electronic equipment. By ensuring this product is disposed of correctly, you will help to prevent potential negative consequences to the environment and human health, which could otherwise be caused by inappropriate handling of this product.

In Countries Outside the European Union, Norway, Iceland, and Liechtenstein:

Dispose of packaging and product in a responsible manner, this may include recycling at your nearest recycling centre. Including the re-use and recycling of the materials & packaging of this product. Contact your local authority to find the nearest electrical and electronic equipment waste disposal point. This product must not be disposed of with regular household waste.

Assembled in Australia from imported parts/materials from China and the Czech Republic.

CERTIFICATION AND CONTACT DETAILS

EU CE DECLARATION OF CONFORMITY (DoC)

Hereby, ASSA ABLOY Australia Pty Ltd declares that the P100B padlock complies with the CE Directives including the Electromagnetic Compatibility (EMC) directive, Restriction of Hazardous Substances (RoHS) directive, Registration, Evaluation, Authorisation and Restriction of Chemicals (REACH) Regulation & Waste Electrical and Electronic Equipment (WEEE) directive. The full text of the EU declaration of conformity is available at the following internet address:

www.assaabloy.com/au/en/solutions/products/aperio-technology/aperio-p100-padlock

UKCA DECLARATION OF CONFORMITY (DoC)

Hereby, ASSA ABLOY Australia Pty Ltd declares that the P100B padlock complies with the United Kingdom (UK) legislations including the Electromagnetic Compatibility Regulations, Restriction of the Use of Certain Hazardous Substances in Electrical and Electronic Equipment Regulations, Registration, Evaluation, Authorisation and restriction of chemicals (REACH) & Waste Electrical and Electronic Equipment (WEEE) regulations. The full text of the UKCA declaration of conformity is available at the following internet address:

www.assaabloy.com/au/en/solutions/products/aperio-technology/aperio-p100-padlock

R-NZ RCM & RSM Declaration of Conformity (DoC)

Hereby, ASSA ABLOY Australia Pty Ltd declares that the P100B padlock is in compliance with the Regulatory Compliance Mark (RCM) and R-NZ for Australia and New Zealand.

Manufacturer details

ASSA ABLOY Australia Pty Ltd.
235 Huntingdale Road, Melbourne
Victoria, 3166, Australia
Phone: 1300 LOCK UP (1300 562 587)
www.assaabloyopeningsolutions.com.au

UK Representative

ASSA ABLOY Opening Solutions
School Street, Willenhall
West Midlands, WV13 3PW
United Kingdom
www.assaabloy.com/uk/en

CE Representative

ASSA ABLOY Opening Solutions CZ s.r.o.
Strojnická 633
516 01 Rychnov nad Kněžnou
Czech Republic
www.assaabloy.com/cz/cs

