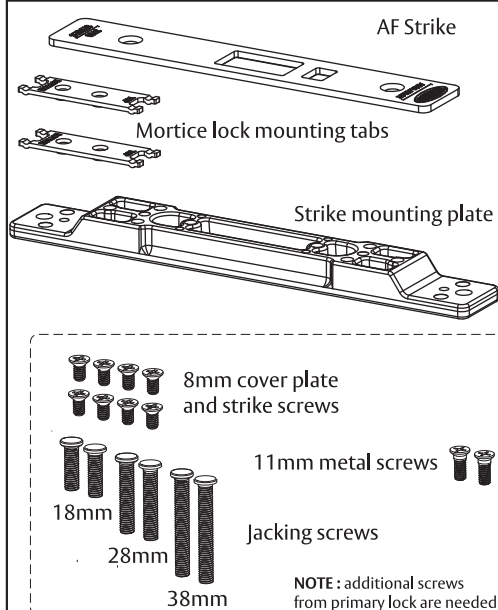
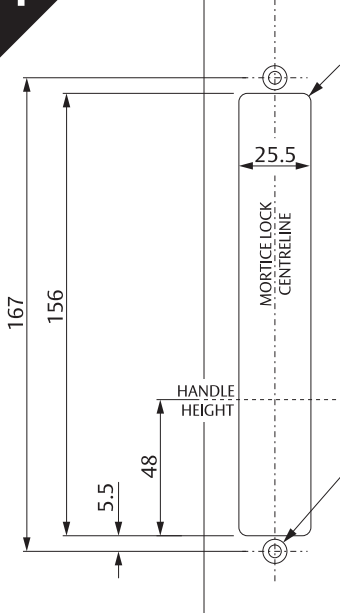


THIS INSTRUCTION COVERS ALUMINIUM DOOR PREPARATION AND SECURING THE LOCK AND STRIKE. FOR FURNITURE HOLE LOCATIONS - REFER TO INSTRUCTIONS SUPPLIED WITH THE LOCK.

CONTENTS

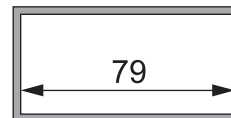


1



DOOR PREPARATION

- **Note** : Minimum internal section depth required for installation is 79mm.

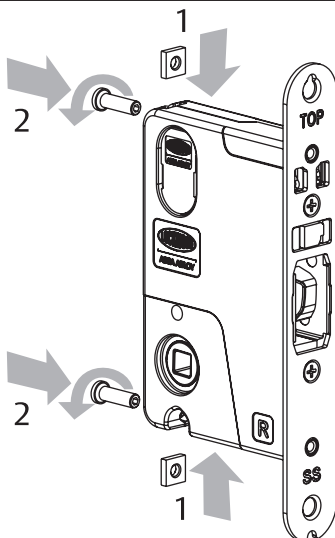


- Establish height that lock will be on door.
- Cut face plate window.
- Drill and countersink fixing holes.
- Use instructions and template supplied with lock for cylinder, furniture holes etc.

2

JACKING SCREW SELECTION AND INSTALLATION

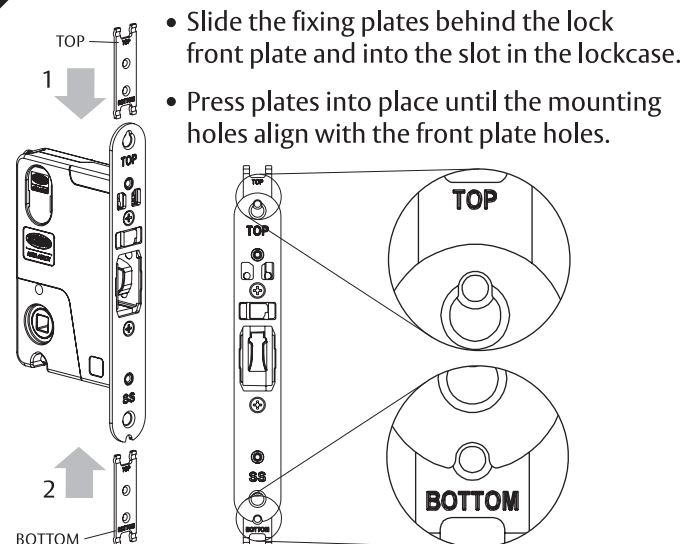
- To provide additional support for the mortice lock, jacking screws are recommended.
- Determine the correct jacking screw to be used by measuring the depth of mortice and referring to the table.
- Place square nut into mortice lock and fit jacking screw from back of the lock.
- Install jacking screws to less than mortice depth as these will be extended in the up-coming step.
- **NOTE: Do not use jacking screws if glass is visible in section!**



Jacking screw length	Internal section depth
18mm	Up to 85mm
28mm	85 - 95mm
38mm	95 - 105mm

3

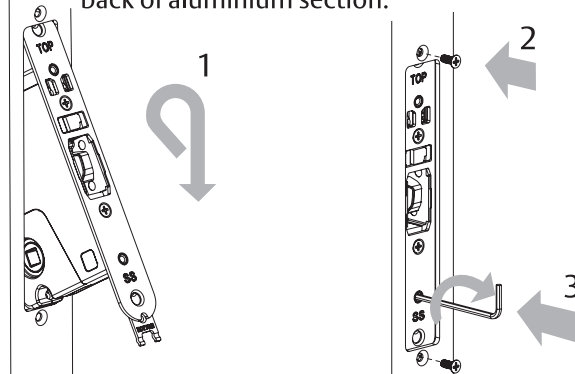
ASSEMBLE FIXING PLATES



4

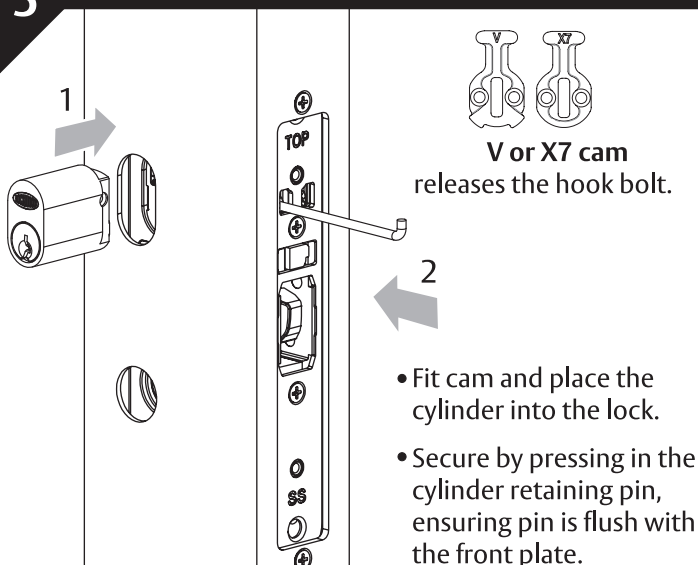
LOCK INSTALLATION

- Tilt lock through face plate window, lift into aluminium section and align screw holes.
- Secure the lock using the supplied 11mm long screws.
- Use supplied Allen key to secure jacking screws against back of aluminium section.



5

CYLINDER INSTALLATION



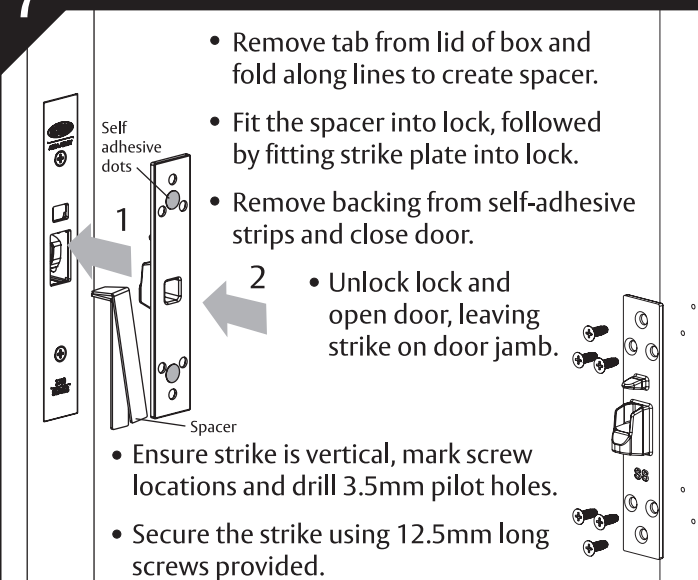
6

FACE PLATE AND FURNITURE INSTALLATION

- Fit face plate onto lock using the supplied 8mm long screws.
- Install levers to furniture (as needed) and install furniture as per supplied instructions.
- The lock function can now be tested.

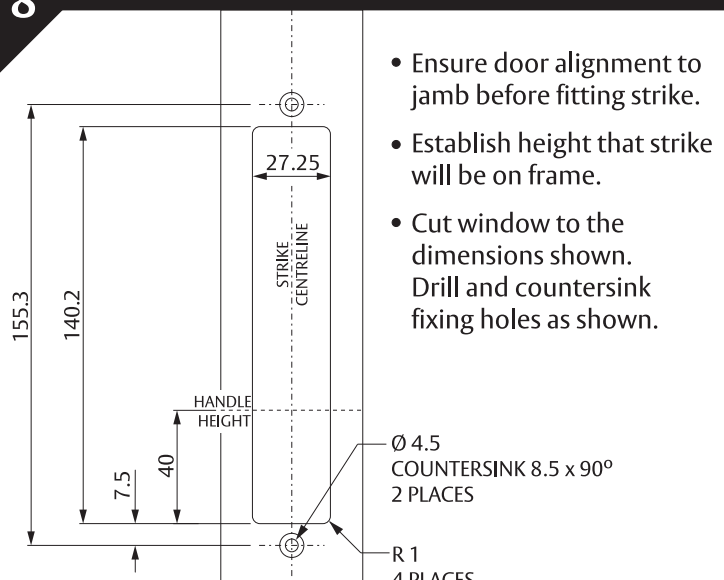
7

SURFACE MOUNT STRIKE INSTALLATION



8

FLUSH MOUNT FRAME PREPARATION



9

FLUSH MOUNT STRIKE INSTALLATION

