

Aperio® E100

Wireless Escutcheon

Euro profile

Technical information

ASSA ABLOY
Opening Solutions

Experience a safer
and more open world

Robust access control with customizable features

The ASSA ABLOY Aperio E100 is the most convenient way to upgrade access control: It is fitted without wiring at the door and works with almost any system, via Online, Offline or OSS-standard offline integration.



Open with a smart card or mobile phone.
The Keypad option offers multi-authentication
for an extra layer of security*.

*Only supported by Aperio online

Main electronics (RFID +
radio + BLE) outside, security
electronics inside.

Audio signal when card
is presented or keypad
is operated.

Different handle models:
U- and L- shapes.

Inbuilt LED instantly
communicates if access
is granted or denied.

Optional electronic
privacy button.

Internal handle use
detection (request to
exit, escape & return).

Inside handle always
engaged.

Cutouts:



EUR Cylinder

Swiss Cylinder

Blind



Easy integration

Aperio E100 works seamlessly with access
control systems integrated with Aperio via
the AADP protocol or Wiegand hub. No
database integration required.



Quick installation

Minimal drilling. Interconnecting cable.



Flexibility

Can be used with all European (DIN)
mortise locks – in wooden, steel and
tubular-frame doors (and glass doors).



Convenience

Aperio E100 reads industry-leading RFID
credentials, as well as mobile (NFC and BLE).



Privacy function (optional)

Electronic privacy button when pressed/
enabled allows the user to restrict access into
the area. When engaged, the EAC may still
grant access to specific users.

Aperio E100 Wireless Escutcheon Euro profile

Technical information



Documents
and certificates

Technical data and features

	Authentication	CARD/Mobile, PIN, CARD/Mobile & PIN combined
	Code	PIN code managed by the access control system
	RFID technologies (based on reader type)	iCLASS, iCLASS SE, iCLASS Seos, MIFARE Classic, Mifare Classic SE, Mifare Ultralight, Mifare Plus, Mifare DESFire 0.6, Mifare DESFire EV1, Mifare DESFire EV2, Mifare DESFire EV3 (EV2 and EV3 only in Legacy mode), Mifare DESFire SE, LEGIC® Advant, LEGIC® Prime, PicoPass, ISO 14443A UID, ISO 14443B UID, ISO 15693 UID. Exceptions: LEGIC-only reader available
	RFID reading	UID / Sector / Block / Application / File / LEGIC® Segment Data – Depending on the RFID technology
	RFID reading range	Up to 4 cm
	Mobile technology	Seos, STid and Gallagher-enabled mobile credentials via BLE* and NFC Seos and DESFire mobile credentials in Apple Wallet and Google Wallet
	Approvals	CE, UKCA, EN179, Fire EN1634
	Dimensions	312 × 41 × 10/20 mm (H × W × D)
	Handle	L-Shape, U-Shape
	Surface	Stainless steel brushed
	Distance	Blind, 70, 72, 74, 78, 85, 88, 90, 92, 94
	Spindle	Spindle 8 mm, 9 mm, 10 mm
	Door leaf thickness	Door leaf between 40 and 100 mm thick, in 10 mm increments
	Backset	> 40 mm
	Mounting plate	n/a
	Battery	1 × Lithium CR123A
	Battery life (based on reader type)	30 openings per day for 50 months**
	Emergency power	Via micro-USB socket
	Radio standard	IEEE 802.15.4 (2.4 GHz)
	Encryption (radio communication)	AES 128 bits
	Distance between device and hub	Up to 25m depending on the building environment
	Class of protection	IP52 and 54***
	Operating temperature range	0°C to 60°C
	Relative humidity	< 85% (condensation-free)
	Status	LED (red/green/orange) and buzzer
	Door sensor information	Internal handle use detection (request to exit, escape & return)
	Communication interfaces	Communication via radio (USB dongle) or micro-USB cable (accessory)
	Offline and Online operation modes	Aperio Online; Aperio Offline; OSS-standard Offline



For indoor use



It includes:

- 1 escutcheon with battery (Lithium CR123A)
- Screws
- Drilling template
- Tool for inserting cables (for thicker doors)
- Installation instructions



Communicates with:

- RS485 Communication Hub
- Aperio IP Communication Hub
- Wiegand Interface (standard and advanced versions) Communication Hub



Smart Credential Handling:

Up to 1000 users can be granted access even if the EAC is temporarily down

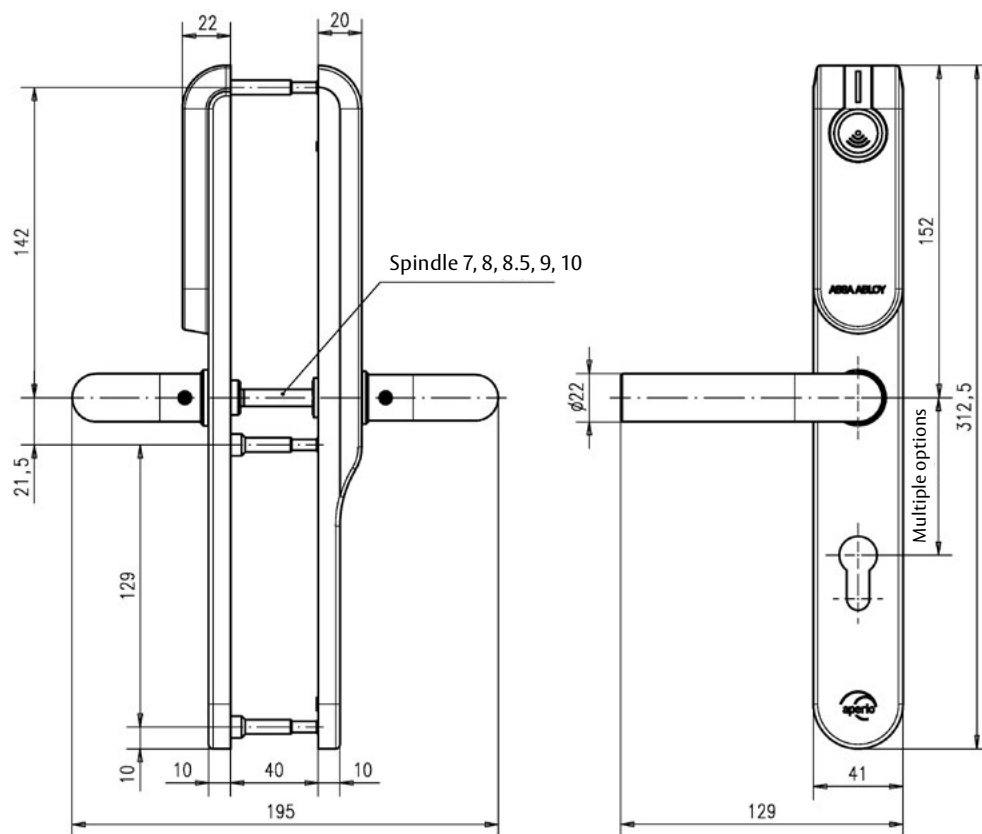
* LEGIC version is not available with BLE

** Except LEGIC

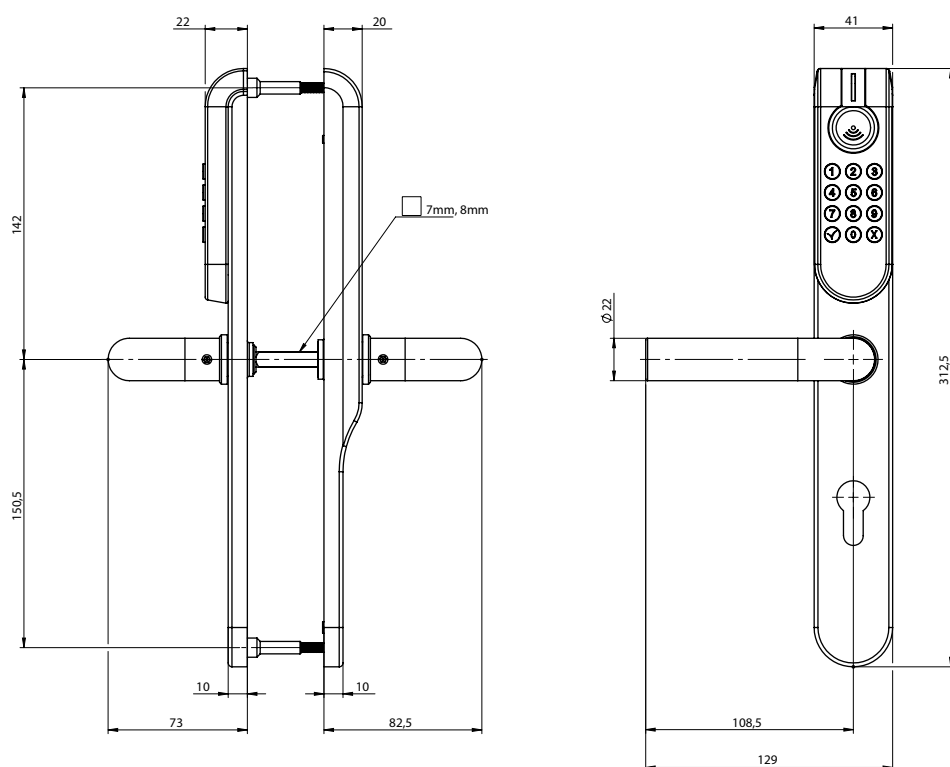
*** Outdoor environments may affect product operability (excessive humidity, salt, extreme temperatures)

Technical information

E100 European profile



E100 European profile (French variation)



**ASSA ABLOY Opening
Solutions EMEA**
Digital and Access
Solutions
Dukes Court
Duke Street
Woking GU21 5BH
United Kingdom

© Images: All rights reserved by iStock and ASSA ABLLOY. We reserve the right to make technical modifications. Version: AA_Aperio_Datasheet_ET100_EURO_FRENCH_10_2024_ENG_EMEA