

## Panic Exit Device PED 300+PED/GL Push Bar - Lateral locking points

### Description:

- Set of PED composed of Modular Push Bar and kit for 2/3 lateral locking points

### Characteristics:

- Modular push bar type
- For fire and smoke applications
- High durability 2,00,000 cycles
- One central locking point
- For one or double leaf door up to 200 kg
- For all types of door
- For doors up to 1200mm width in standard
- For doors up to 1400mm width in option
- Steel pulman latch in standard
- Dead latch in standard
- Steel or zinc alloy swing latch
- Zinc alloy cover 38mm width
- Aluminium touch bar 1046mm long
- Bar to be cut
- 73mm projection
- HO function in option
- Micro switch version in option



Classification to EN1125: 2009

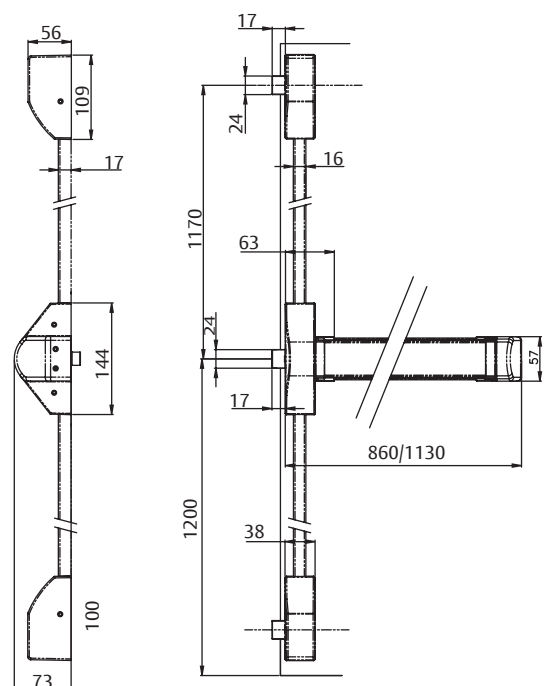
3 7 6 B 1 3 2 2 A A



## Panic Exit Device Characteristics of PED 300+PED/GL

### Characteristics of PED 300+PED/GL:

- Set of rods, rod covers and lateral latches
- To fit modular cross bar
- For 2 lateral locking points installation
- For one or double leaf door
- For doors up to 2350mm high in standard
- For doors up to 3200mm high in option
- Steel pulman latches
- Dead latches in standard



## Ordering details

Model No.	Part no.	Type	Description
PED 300/--/GG	MNBT101M02SGGAA	Push bar	Central locking point PED with steel latch and dead latch, 1200mm wide door, silver support and bar
PED 300/--/NR	MNBT101M02SNRAA	Push bar	Central locking point PED with steel latch and dead latch, 1200mm wide door, black support and red bar
PED 300/--/SA	MNBT101M02SSAAA	Push bar	Central locking point PED with steel latch and dead latch, 1200mm wide door, s/steel effect support and s/steel bar
PED 300/HO/GG	MNBT111M02SGGAA	Push bar	Central locking point PED with steel latch and dead latch, 1200mm wide door, silver support and bar - HO function
PED 300/HO/NR	MNBT111M02SNRAA	Push bar	Central locking point PED with steel latch and dead latch, 1200mm wide door, black support and red bar - HO function
PED 300/HO/SA	MNBT111M02SSAAA	Push bar	Central locking point PED with steel latch and dead latch, 1200mm wide door, s/steel effect support and s/steel bar - HO function
PED/GL/G	KITMNC1S3SLFG	lateral KIT	Modular KIT for two/three lateral locking points and rod cover PED with steel latch silver support and vertical rod cover
PED/GL/N	KITMNC1S3SLFN	lateral KIT	Modular KIT for two/three lateral locking points and rod cover PED with steel latch black support and vertical rod cover
PED/GL/S	KITMNC1S3SLFS	lateral KIT	Modular KIT for two/three lateral locking points and rod cover PED with steel latch satin support and vertical rod cover

## Panic Exit Trim Specifications

Outside Device	Blind Plate	Modular Lever Handle
No outside opening	•	
Free passing door		•
Cylinder locking - knob / lever handle opening		•