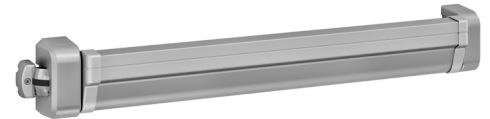


Panic Exit Device  
Cyrex PE1C  
Push Bar - Rim Device

Description:

- Rim panic exit device
- CE EN 1125:2008 approved
- Suitable for fitting on smoke-resistant fire door
- New Type C pivot panic device: intuitive and comfortable movement
- Reversible panic exit device without intervention to the product
- Suitable for single or double leaf doors
- Low projection: < 92mm
- Bar cutting possible on site up to 350mm
- 44mm space between the bar and the door (25 mm with bar pressed) for easy grip
- For standard doors up to 2,300mm tall
- For tall doors up to 3,200mm (kit to be ordered separately)
- Rotating rods cutting possible on site and pull resistance rods
- Rod covers delivered as standard for 2 and 3-point versions
- Complete fire strike set



Classification to EN1125: 2009

3	7	6	B	1	3	2	2	A	A
---	---	---	---	---	---	---	---	---	---



Panic Exit Device  
Characteristics of  
Cyrex PE1C

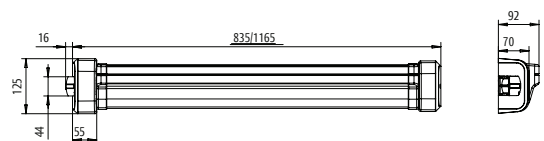
Specifications:

- Very high durability: up to 1 million cycles
- Comfort of use for all types of public and optimal evacuation in case of panic, thanks to the very smooth opening effort < 2.5kg without load and < 5kg for doors loaded to 100 kg
- High burglar resistance: 500 kg per locking point, up to 1,500kg for the 3-point version
- Very high corrosion resistance: 240 hours
- Easy installation

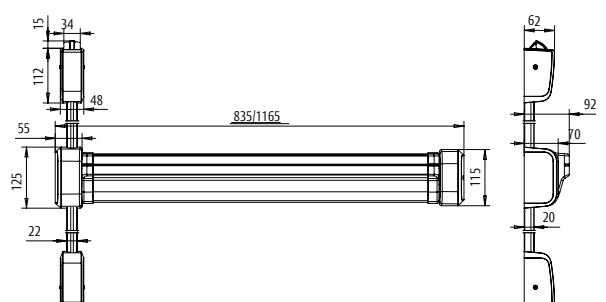
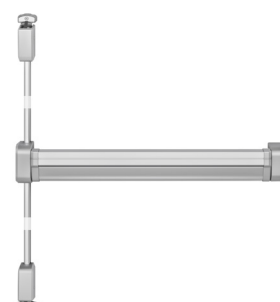
Accessories

- Outside access device (trim):
  - »Handle for european profile cylinder
  - »Handle without cylinder
  - »Knob for european profile cylinder
  - »Fixed knob for european profile cylinder
  - »Fixed knob without cylinder
- Spare parts on request

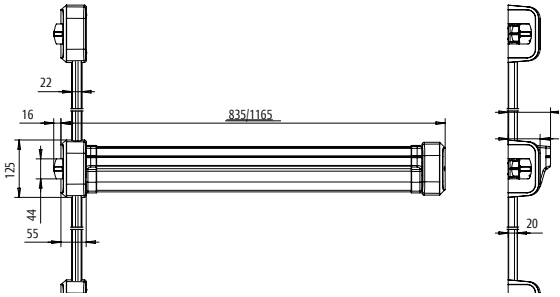
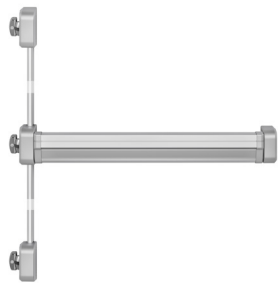
Cyrex 1 point lateral



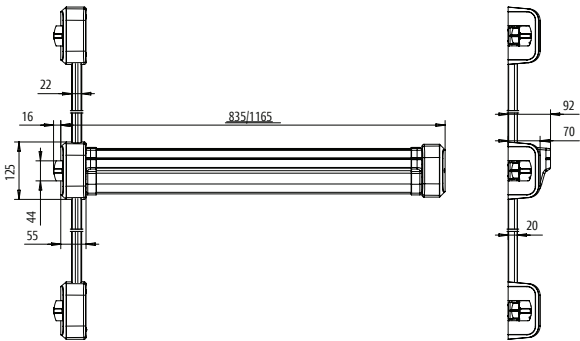
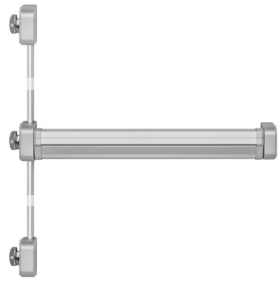
Cyrex 2 points  
upper and lower



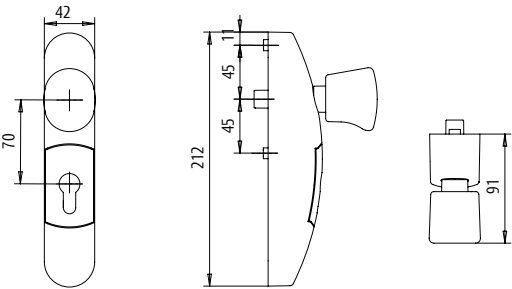
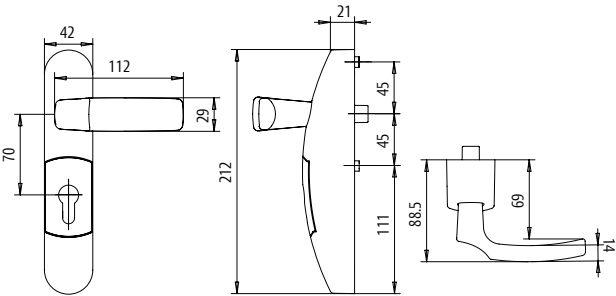
Cyrex 3 points  
upper and lower



Cyrex 3 points  
upper lateral and  
lower lateral



Outside access device  
(trim)



Ordering details for  
Panic Exit Devices

Part no.	Type	Description
<b>Panic Exit Devices EN 1125</b>		
<b>Cyrex</b>		
PE1C1900A1	1 point	ASSA ABLOY Cyrex PE1C 1 point Length 835 mm Satin Chrome
PE1C12001A1	1 point	ASSA ABLOY Cyrex PE1C 1 point Length 1165 mm Satin Chrome
PE1C29011A1	2 points Top and bottom	ASSA ABLOY Cyrex PE1C 2 points top and bottom Length 835 mm Satin Chrome
PE1C22011A1	2 points Top and bottom	ASSA ABLOY Cyrex PE1C 2 points top and bottom Length 1155 mm Satin Chrome
PE1C39011A1	3 points Top and bottom	ASSA ABLOY Cyrex PE1C 3 points top and bottom Length 835 mm Satin Chrome
PE1C32011A1	3 points Top and bottom	ASSA ABLOY Cyrex PE1C 3 points top and bottom Length 1155 mm Satin Chrome
PE1C59011A1	3 points Side	ASSA ABLOY Cyrex PE1C 3 points Side Length 835 mm Satin Chrome
PE1C52011A1	3 points Side	ASSA ABLOY Cyrex PE1C 3 points Side Length 1165 mm Satin Chrome
APE1011A	Accessories	ASSA ABLOY Cyrex Extension Kit for heigh doors 3200 max Satin Chrome
<b>Outside Trims for Cyrex Series</b>		
OT1A111A	Handles, Knobs and pull handle	ASSA ABLOY Cyrex Reversible handle - captive key for europrofile cylinder Satin Chrome
OT1A001A	Handles, Knobs and pull handle	ASSA ABLOY Cyrex Reversible handle - non lockable Satin Chrome
OT1B111A	Handles, Knobs and pull handle	ASSA ABLOY Cyrex Knob for europrofile cylinder Satin Chrome
OT1C001A	Handles, Knobs and pull handle	ASSA ABLOY Cyrex Fix Knob non lockable Satin Chrome