

# CY110 Euro single cylinder



For internal doors and elevators



Highly durable cylinder with the performance to secure your building. Keep your interior spaces secure with the CY110 single cylinder.

The multi-position cam (8 x 45°) allows to turn the cam into the application's required position.



Certified security

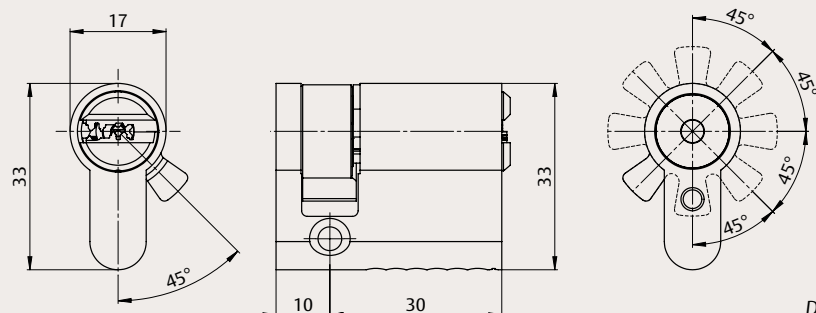


Protection against cylinder attack

## Technical attributes

<b>Security</b>	EN 1303:2015 certified, 1 6 0 B 0 C 5 0/D* (grade D optional) SKG** certified DIN 18252 compliant
<b>Attack resistance</b>	Anti-pick Anti-bump (only for KA and KD) Anti-drill: 5 min. drilling resistance (optional) Anti-pull: 15 kN pulling resistance* (optional) <small>*when used with security escutcheon</small>
<b>Keying</b>	Dimple security design Master key system (MKS)   Keyed alike (KA)   Keyed to differ (KD)
<b>Number of keys</b>	MKS and KA: according to order   KD: 3
<b>Max. number of effective key differs</b>	92,232
<b>Max. number of MKS profiles</b>	20
<b>Number of pins</b>	6 (optional side/top pins)
<b>Raw material</b>	Brass
<b>Finish</b>	Satin nickel Optional: Polished brass, Black chrome
<b>Cylinder length</b>	Minimum: 30 10 mm Maximum: 80 10 mm Increments: 5 mm (starting from 30 10 mm)
<b>Weight</b>	168 g (length 30 10 mm)
<b>Optional functionality</b>	Elevator version with 2 x M4 housing Thumbturn variant

Please check for availability in your region.



Dimensions in mm