

# Electric Strikes from effeff



The original – trust the best

  
ASSA ABLOY

We open doors – around the world!

Experience a safer  
and more open world



## From brand to product name: Why we understand electric strikes from effeff

Since its founding in 1936, the German company effeff has become the market leader in the door control systems segment. After starting electric strike production in 1947, a comprehensive product range was gradually developed, which today offers highly coordinated system solutions for doors. For many customer requirements, we develop special solutions in our own test laboratory – that is also a long-standing tradition for us.

### **effeff is part of ASSA ABLOY**

Since 1 February 2000, effeff has been part of the ASSA ABLOY Group based in Stockholm and merged with IKON GmbH Präzisionstechnik, Berlin, which is also part of the group, at the beginning of 2005 to form ASSA ABLOY Sicherheitstechnik GmbH.

The well-known and proven brands IKON and effeff will remain under the umbrella of ASSA ABLOY Sicherheitstechnik GmbH, along with the production and sales locations in Berlin and Albstadt, as well as the sales office in Ratingen.

### **More security around the globe**

ASSA ABLOY is the leading manufacturer and supplier of mechanical and electromechanical locks and related products worldwide. Our customers benefit from the extensive know-how of the world's largest group of companies which provides greater convenience and greater security throughout the world.

There are many imitators, but there's only one original. Our electric strikes have been impressing users for many decades in over 70 countries with their quality every day.



FOUNDATION

1936

1947

ELECTRIC STRIKE FACTORY

1948

FIRST PATENT

EFFEFF IS REGISTERED

1952

1970

FAFIX®

EFFEFF GROUP  
BECOMES PART OF  
THE ASSA ABLOY  
GROUP

2000

2007

SMALLEST  
ELECTRIC STRIKE  
FOR STANDARD  
APPLICATIONS

MEDIATOR®

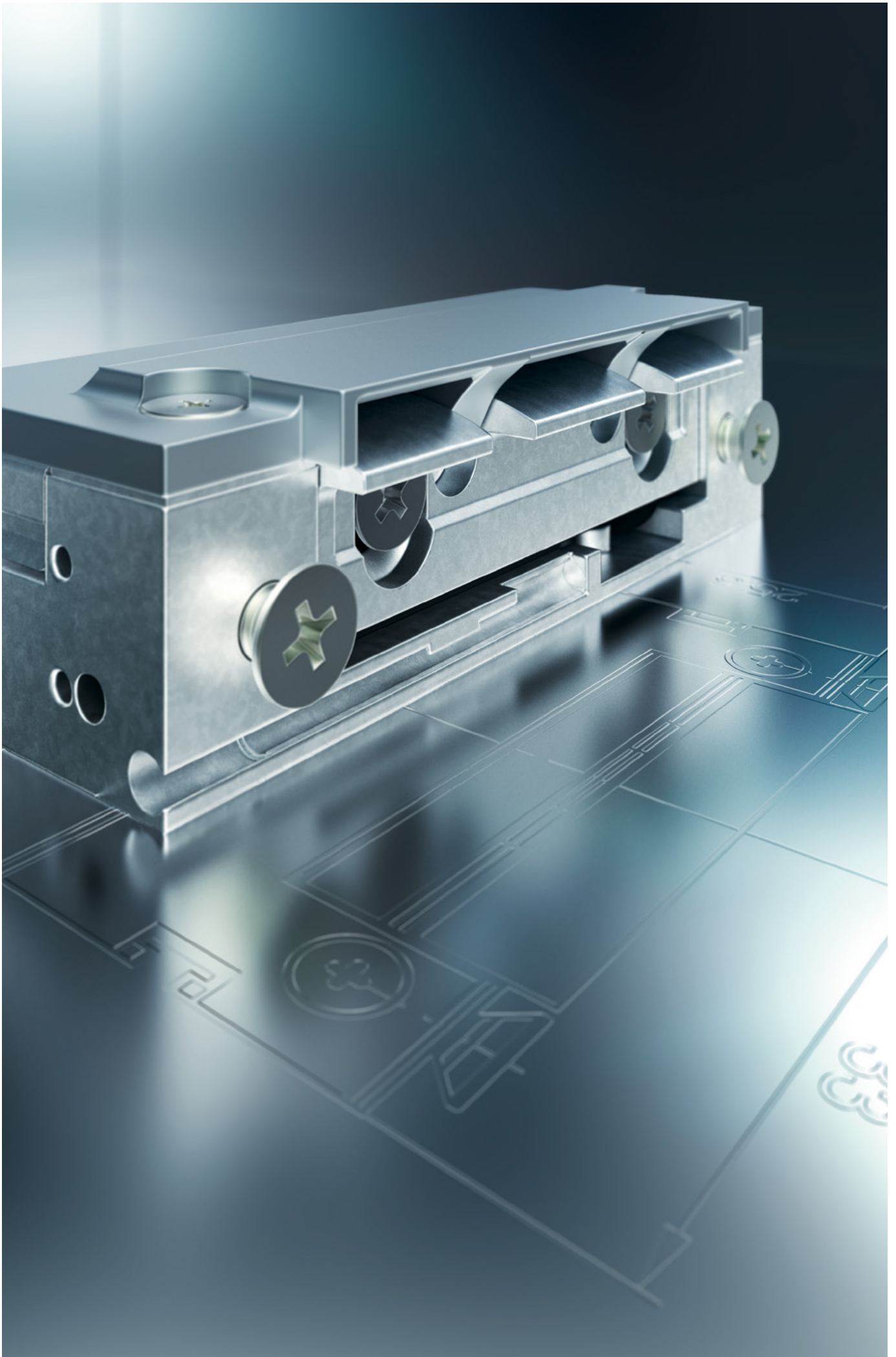
2007

FORBES  
LIST

2016

## The success story: The electric strike conquers the world

- 1936** Fritz Fuss founds a “workshop for precision mechanics and electrical engineering”.
- 1947** Fritz Fuss focuses on electric strikes, which is soon reflected in the name: Fritz Fuss, electric strike factory.  
To this day, effeff develops and manufactures electric strikes at the Albstadt plant: Quality made in Germany.
- 1948** Fritz Fuss receives a patent for the first electric strike with “hold-open function”. Today, the effeff brand holds more than 130 patents.
- 1952** the “effeff” brand is registered by Fritz Fuss.
- 1970** The latch adjustment option is launched as FaFix® and is patented. After the patent protection expires, it is copied by many other manufacturers.
- 2000** effeff becomes part of the ASSA ABLOY Group based in Stockholm.
- 2002** 90 percent of all doors in Germany that are equipped with an electric strike are fitted with effeff brand.
- 2003** Certification in accordance with ISO 9001. Production at the Albstadt plant is highly automated, and modern CNC-controlled milling, turning, punching, bending and machining centres are used.
- 2007** effeff develops the world’s smallest electric strike for standard applications to date, measuring 25.5 x 16 x 66 mm.
- 2007** The MEDIATOR® solution is launched: The lock/electric strike solution is so innovative that it is protected under patent law.
- 2016** ASSA ABLOY appears on the Forbes list of most innovative companies for the third time.



## The right electric strike solution for every type of door:

### Minimum installation dimensions – maximum effect

With an electric strike a door can be unlocked at the push of a button – without needing to go to the door yourself. effeff electric strikes provide optimum security and convenience. Our wide range will satisfy all demands and provides the appropriate strike for every installation location. We guarantee this around the world, because effeff complies with both national as well as international requirements and regulations.

Every building owner has their own personal ideas, every company has its own special requirements – and every door has its own special equipment. effeff offers you unique electric strike systems that can be designed and assembled exactly according to your individual requirements. From the model with mechanical unlocking to the model with bipolar protective diode for access control systems – we fulfil all requirements.

#### Standard electric strike models

	Model	Model	Model	Model
<b>Fail-locked</b>	118	17	19	14
<b>Fail-unlocked</b>	138	37	39	34
<b>Hold-open function</b>	128	27	29	24
<b>Hold-open function without pin</b>	148			
<b>Universal DIN L/ DIN R</b>	x	x		
<b>Fixed latch</b>				x
<b>Fix</b>				optional
<b>FaFix®</b>	x	x	x	optional
<b>ProFix®1/ProFix®2</b>	optional			
<b>E-lever</b>	optional	optional	optional	optional
<b>Strong latch bolt spring</b>	optional	optional		
<b>Weak latch bolt spring</b>	optional	optional		
<b>Offset drilled hole</b>	optional			
<b>For latch bolt slide</b>	optional			
<b>For magnet latch locks</b>	optional			
<b>Screw-in/Plug-in connection</b>	optional			
<b>Universal voltage</b>	x			
<b>Monitoring contact</b>	optional	optional		optional
<b>Armature contact</b>	optional			
<b>Diode</b>	optional	optional	optional	optional
<b>Surface-mounted housing</b>	9338	8037		



Electric strike for standard application  
Model 118



# Electric strikes in escape routes and on fire and smoke rated doors:

## Protection of life and property

Doors along escape routes as well as smoke and fire rated doors are subject to particularly high requirements. The special doors are used in areas designed to protect human life. At the same time, the need to protect property must also be taken into account. Selecting the appropriate electric strike is important for smooth operation. effeff has the right electric strike for every application.

- Smoke rated doors
- Fire rated doors
- Security applications
- Escape doors
- Hazardous areas

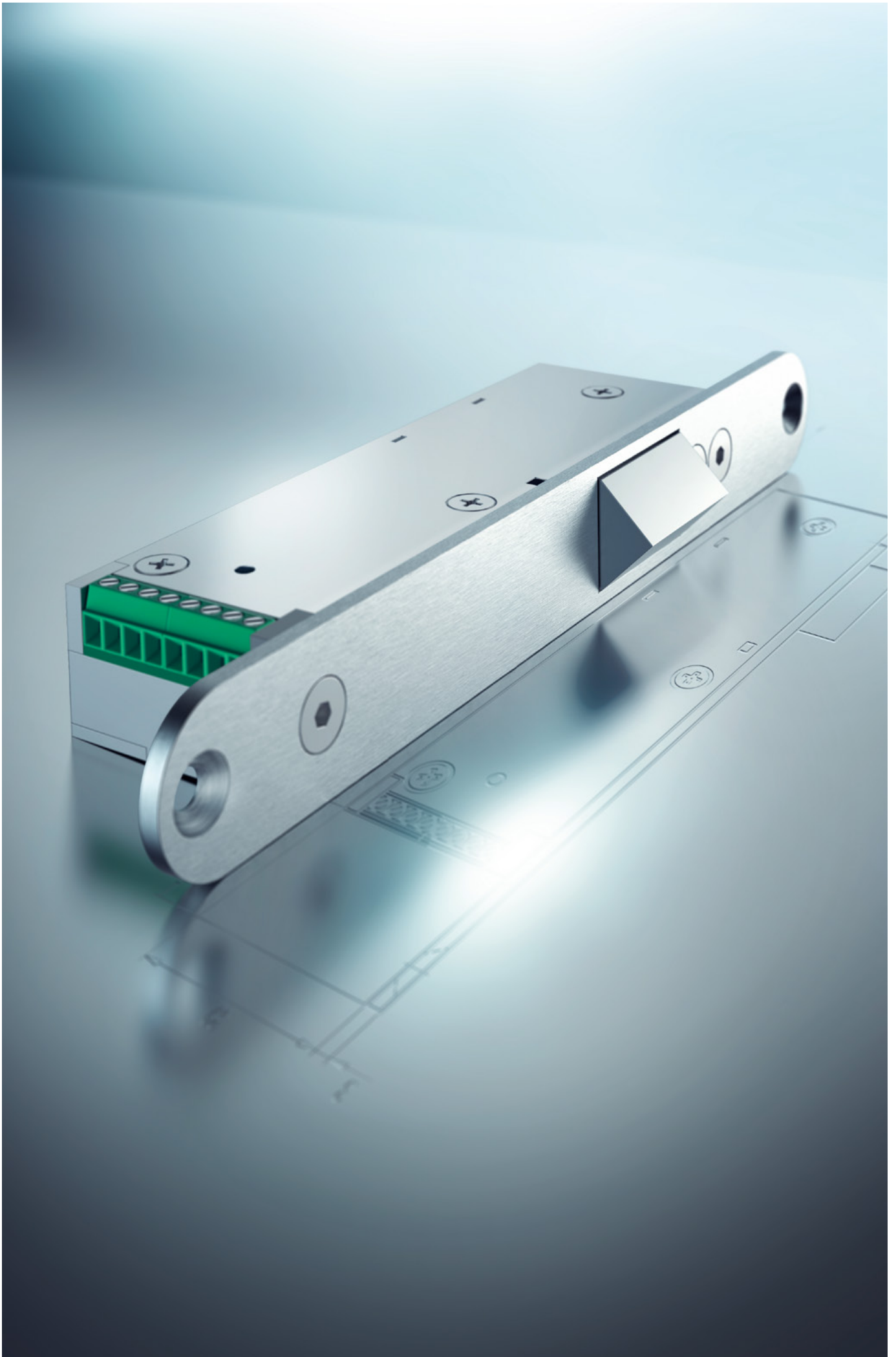
The security electric strikes from effeff offer the user stable quality. Special model series have been developed for use under high pre-load and for supplementary locking systems on doors along escape routes.

### Electric strike for fire and smoke rated doors and escape doors

Fire protection	118F	143	142U	131
Fail-locked	x	x	x	x
Universal DIN L/ DIN R	x	x		
Fixed latch		optional	optional	optional
Fix		optional	x	
FaFix®	x	x	x	
ProFix®1/ ProFix®2	optional	optional		
Screw-in/Plug-in connection	optional	x		
Universal voltage	x	x	x	
Monitoring contact	optional	optional	optional	optional
Armature contact				optional
Diode	x	x	x	optional
	Smoke protection: 118S	Escape doors: 331U	Escape doors: 332	Escape doors: 352M
Fail-locked	x			
Fail-unlocked		x	x	x
Motorised				x
Universal DIN L/ DIN R	x		x	x
Fixed latch		optional	optional (with Fix)	
FaFix®	x		x	VarioFix®
ProFix®1/ ProFix®2	optional		optional	
Screw-in/Plug-in connection	optional			
Universal voltage	x			x
Monitoring contact	optional	optional	x	x
Armature contact		optional	x	x
Diode	optional	x	x	x
Surface-mounted housing			80332	A1035-01



Model 118F



# Our wide range for all special requirements: Regulatory requirements are met to the highest level

Special requirements must not be a problem: in the area of special and high-security strikes effeff impresses with sophisticated solutions. Even for special applications such as interlock controls, clean room doors and for outdoor use, effeff has the right product.

effeff offers a wide range of solutions for the diverse world of special doors – opening up entirely new possibilities.

Electric strikes for glass doors, double acting swing doors and sliding doors as well as deadbolt locks, rim type strikes and other special applications can be found in our online catalogue.

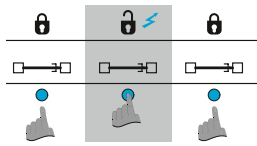


Model 118W

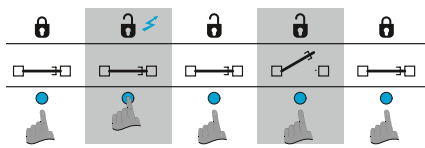
## Special applications

	Water-resistant: 118W	For swing doors: 351	For sliding doors: 110/112
<b>Fail-locked</b>	x		x
<b>Fail-unlocked</b>	138W	x	optional
<b>Hold-open function</b>	148W		optional
<b>Motorised</b>		351M.80	
<b>Universal DIN L/ DIN R</b>	x		
<b>FaFix®</b>	x		
<b>ProFix®1/ ProFix®2</b>	optional		
<b>E-lever</b>	optional		
<b>Universal voltage</b>	x	351M.80	
<b>Monitoring contact</b>	optional	x	
<b>Diode</b>	x	x	optional
<b>Water-resistant</b>	x		x
<b>Security fail-unlocked</b>	138F	342U	331U
<b>Fail-unlocked</b>	x	x	x
<b>Fixed latch</b>			x
<b>Fix</b>	x	x	
<b>FaFix®</b>	x	x	optional
<b>ProFix®1/ProFix®2</b>	optional		
<b>Screw-in/Plug-in connection</b>	optional		
<b>Universal voltage</b>		x	
<b>Monitoring contact</b>	optional	optional	optional
<b>Diode</b>	x	x	x
<b>Explosion hazard (ATEX)</b>	EX118R	EX118P	
<b>Fail-locked</b>	x		
<b>Fail-unlocked</b>	EX138R		
<b>Locked without pressure</b>	118P	x	
<b>Unlocked without pressure</b>	138P		
<b>FaFix®</b>	x	x	
<b>Monitoring contact</b>	x		

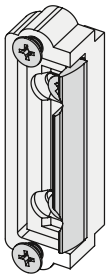
# The alphabet of electric strikes: from armature contact to universal voltage



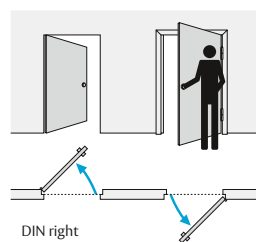
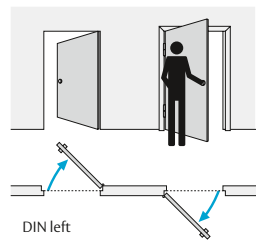
Fail-locked



Hold-open function



Example dummy component



DIN left / DIN right

**Armature contact:**

The armature contact is a switch/sensor built into the electric strike. This signals whether the electric strike is locked or unlocked.

**Fail-locked mode:**

The door can be opened during contact. A buzzing sound is audible in alternating current operation, while no buzzing sound is heard in direct current operation.

**Hold-open function:**

The latch bolt controlled locking pin in the centre of the keeper keeps the electric strike unlocked until the door is opened, even after contact has been made.

**Screw-on attachments:**

FaFix® electric strikes are equipped with screw-on attachments (latch holders). This allows adjustment of the door seal pressure.

**Dummy components:**

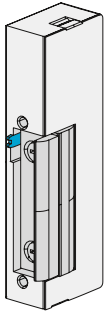
Strike plates for electric strikes can be fitted with FaFix® dummy components. In the event of changes in use, the dummy components can be replaced with electric strikes without having to change the strike plate.

**DIN left / DIN right:**

Look at the door from the side on which the hinges are visible. This is the side towards which the door is opened. The DIN direction of the electric strike or strike plate refers to the DIN table. For double-leaf doors the DIN direction of the active leaf is decisive.

**Diode:**

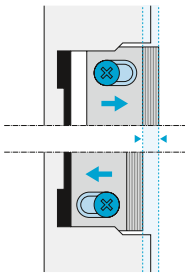
To dissipate the high voltage that arises when the coils are switched off, we recommend electric strikes with diode. This prevents any other connected devices such as access control systems from being damaged.



E-lever

**E-lever:**

The E-lever is a mechanical unlocking device. Electric strikes have this actuating lever in the latch area for mechanical permanent release of the keeper.



Adjusting range see screw-on attachments

**FaFix®:**

FaFix® electric strikes have an adjustable and fixable keeper and thus allow adjustment to the lock latch position. The door seal pressure may be increased or decreased. The advanced evolution of FaFix® electric strikes is ProFix® electric strikes.

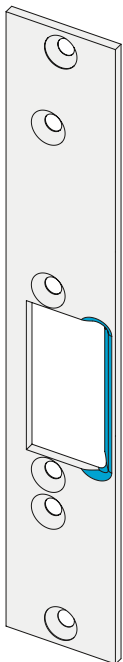
FaFix® function

**Latch bolt spring (weak):**

Weak latch bolt springs can reduce noise emission and the force required to open doors. Preferably used for doors equipped with door closer or swing door operator.

**Latch bolt spring (strong):**

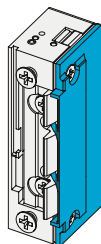
Depending on the door system and door seal design, a stronger latch bolt spring may be beneficial when operating in daytime unlocked mode (unlocking lever). The latch spring keeps the door closed when the door is in daytime unlocked mode.



Latch bolt slide on the strike plate

**Latch bolt slide**

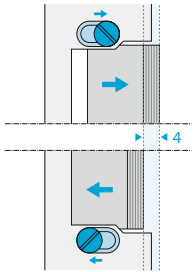
A latch bolt slide generally refers to a sliding surface with an incline along which a latch bolt slides and is pushed back to the strike plate surface during sliding. Latch bolt slides can be attached to the electric strike (ProFix®), to the strike plate or to separate adapters, for example.



Latch bolt slide on the electric strike (ProFix®)

**Fixed latch:**

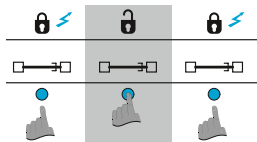
The fixed latch is a keeper without adjustment option (without FaFix® function). Electric strikes with fixed latches generally have a greater latch engagement depth than electric strikes with FaFix® latches.



Fix



ProFix®: Latch bolt slide integrated in electric strike



Fail-unlocked

**Fix:**

The screw holes in the strike plate are milled oval. After installation, the electric strike casing can be adjusted horizontally by up to 4 mm, then aligned with the lock latch bolt and fixed in fastening grooves.

**ProFix®**

effeff's further development of FaFix®: ProFix® improves the overall appearance of the door. The seal layer between door leaf and frame is not interrupted. ProFix® electric strikes are available for all applications: Standard doors, fire and smoke rated doors, and escape doors.

**Monitoring contact (RR)**

The monitoring contact is a switch installed in the electric strike, which is actuated by the latch bolt. The monitoring contact indicates whether the door is open or closed. This is useful for access control and monitoring of door opening time.

**Fail-unlocked function:**

The electric strike is locked for as long as the power is on. If the power is switched off, or if there is a power failure, the keeper can be moved and the door can be opened.

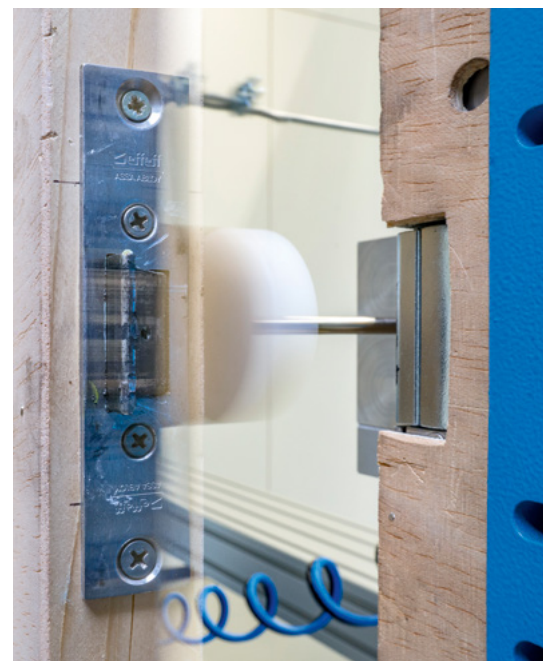
**Universal voltage:**

The electric strike can be operated within a voltage range. For example, 12 to 24 volts AC/DC.

## Trusted security. Long lifecycle and durability

From everyday access to extreme environments – we have the strike that fits. Production is DIN-certified, TÜV-audited, and fully aligned with European and international standards. effeff strikes are tested to resist up to **9,000 N of holding force**, depending on the model. All systems meet **EN 14846** and, where applicable, **VdS** certification. From office buildings to high-security areas, they provide verified protection and mechanical integrity.

Each strike is tested for **200,000 to 500,000 cycles** in our own test lab, ensuring years of dependable use. Features like **sealed contacts, corrosion-resistant materials, and integrated suppression diodes** provide exceptional performance even in harsh or high-frequency environments.



The ASSA ABLOY Group is the global leader in access solutions. Every day we help people feel safe, secure and experience a more open world.

**ASSA ABLOY**

Middle East Office  
P.O. Box 37765  
National Industries Park (NIP)  
Dubai, United Arab Emirates  
Tel.: +971 4880 4888  
[info.me.open@assaabloy.com](mailto:info.me.open@assaabloy.com)  
[www.assaabloy.com](http://www.assaabloy.com)