

MTL400 Single Euro Cylinder



For internal doors



Optional: Adjustable cam

Highly durable cylinder with the performance to secure your building. Keep interior spaces secure with the MTL400 Single Euro Cylinder. The optional multi-position cam allows the cam to turn into the application's required position.



Certified security

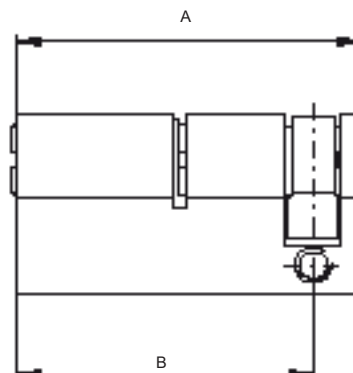
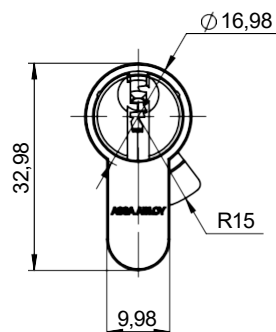


Protection against cylinder attack

Technical data and features

Security	SKG*** certified (optional) EN 1303:2015 tested, 1 6 – B – C 6 0/D (D optional) Cam DIN 18252 compliant
Attack resistance	Anti-pick Anti-bump (for MKS consult your master key specialist) Anti-drill: 5 minutes' drilling resistance (optional) Anti-pull: 15 kN pulling resistance (optional) Anti-snap (optional)
Keying	Dimple key design Master key system (MKS) Keyed alike (KA) Keyed to differ (KD)
Number of keys	MKS and KA: according to order; KD: 3
Max. number of effective key differs	1,000,000
Key profiles	Multiple
Number of pins	5
Raw material	Brass
Finish	Nickel satin, brass, shiny brass
Optional functionality	Adjustable cam Anti-snap design Construction keying

Dimensions in mm



MTL400 Single Euro Cylinder



For internal and external doors

Single cylinder length

A	B
40.5	31
42.5	33
44.5	35
47.5	38
49.5	40
52.5	43
54.5	45
57.5	48
59.5	50
64.5	55
69.5	60
74.5	65
79.5	70
84.5	75
89.5	80
99.5	90
134.5	125



Certified security



Protection against cylinder attack

Dimensions in mm

