



MTL400

Telescopic pin system

ASSA ABLOY
Opening Solutions

Create large master key systems with an extra layer of security

Durable, high-performance cylinder platform provides customized features to enable the creation of one-of-a-kind security systems that meet each organization's unique needs. MTL™400 offers scalable and modular capabilities for a wide range of applications and reinforces your need for key copy control.



Certified security

EN 1303:2015 Euro cylinders tested to 1 6 – B – C 6 D; including optional SKG*** certification plus rigorous testing at ASSA ABLOY labs. Security technology patent protected until 2036.



Attack resistance

Secure anti-pick design with 15kN pulling resistance, 5 minutes' drilling resistance, 3rd-party tested bump resistance, and optional anti-snap protection for additional security.



Reliable construction

Durable design with 96-hour corrosion resistance and tested for 300,000 lock/unlock cycles.

Experience a safer
and more open world

MTL400 Key



For all
MTL400
locking points



With its convenient, patented dimple security design, the MTL400 Key is reversible – it inserts and turns every time. 3 mm thickness withstands Plastic key head fatigue and rounded edges protect against accidental damage.

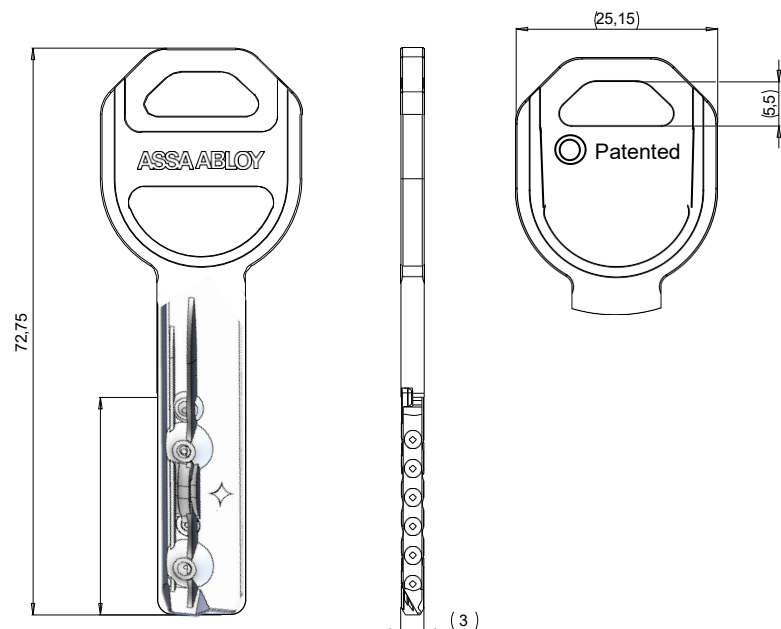


Patent protection
makes unauthorized
key copying illegal

Technical data and features

Security	Patent-protected until 2036
Keying	Dimple key design Master key system (MKS) Keyed alike (KA) Keyed to differ (KD)
Number of keys	MKS and KA: according to order; KD: 3
Max. number of effective key differs	1,000,00
Key profiles	Multiple
Exclusive profiles	Customer specific profiles available
Profile shape	Paracentric
Raw material	Nickel Silver
Finish	Nickel Silver with plastic head
Key thickness	3 mm

Dimensions in mm



MTL400 Double Euro Cylinder



For internal and external doors



Optional: Gear wheel cam

Durable and secure, the MTL400 Double Euro Cylinder provides the protection you need to lock your building's doors – inside or out. Various optional features, such as free wheeling cam and gear wheel cam, make it ideal for a wide range of applications.



Certified security



Protection against cylinder attack

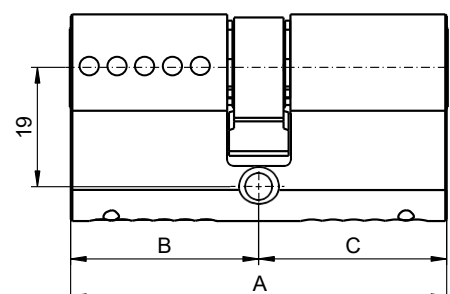
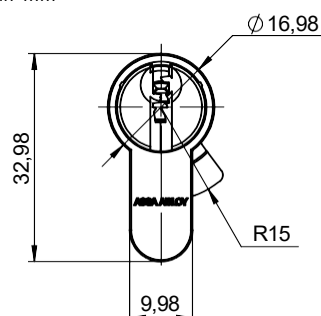
Technical data and features

Security	SKG*** certified (optional) EN 1303:2015 tested, 1 6 – B – C 6 0/D (D optional) Cam DIN 18252 compliant
Attack resistance	Anti-pick Anti-bump (for MKS consult your master key specialist) Anti-drill: 5 minutes' drilling resistance (optional) Anti-pull: 15 kN pulling resistance (optional) Anti-snap (optional)
Keying	Dimple key design Master key system (MKS); Keyed alike (KA); Keyed to differ (KD)
Number of keys	MKS and KA: according to order; KD: 3
Max. number of effective key differs	1,000,000
Key profiles	Multiple
Number of pins	5
Raw material	Brass
Finish	Nickel satin, brass, shiny brass

Optional functionality

Emergency clutch
Gear wheel cam
Anti-snap design
Construction keying
Local cam designs (French, Adriatic Jus)

Dimensions in mm



MTL400 Double Euro Cylinder



For internal and external doors

Double cylinder length

A	B	C
62	31	31
66	31	35
66	33	33
70	35	35
71	31	40
71	33	38
75	40	35
76	31	45
76	33	43
76	38	38
78	33	45
80	40	40
80	45	35
81	31	50
81	33	48
81	38	43
82	47.5	34.5
83	35	48
83	45	38
85	45	40
85	50	35
86	31	55
86	33	53
86	38	48
86	43	43
88	40	48
88	50	38
90	45	45
90	50	40
90	55	35
91	31	60
91	33	58

A	B	C
91	38	53
91	43	48
93	40	53
93	48	45
95	50	45
95	55	40
95	60	35
96	31	65
96	33	63
96	38	58
96	43	53
96	48	48
100	50	50
100	55	45
100	60	40
100	65	35
101	31	70
101	38	63
101	43	58
101	48	53
101	68	33
105	55	50
105	60	45
105	65	40
105	70	35
106	53	53
110	55	55
110	60	50
110	65	45
110	70	40
110	75	35
111	48	63

A	B	C
115	60	55
115	65	50
115	70	45
115	75	40
115	80	35
116	33	83
118	33	85
120	60	60
120	65	55
120	70	50
120	75	45
120	80	40
125	50	75
125	65	60
125	70	55
125	80	45
130	50	80
130	55	75
130	65	65
130	70	60
130	95	35
135	55	80
135	60	75
135	65	70
135	100	35
136	68	68
140	40	100
140	60	80
140	65	75
140	70	70

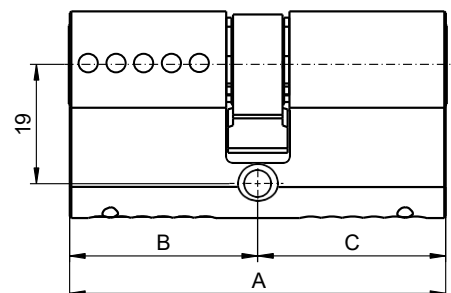
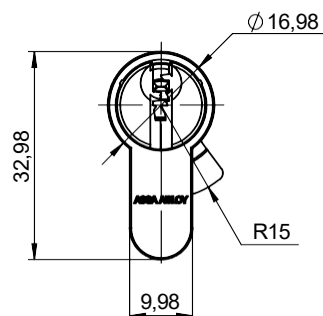


Certified security



Protection against cylinder attack

Dimensions in mm



MTL400 Thumbturn Double Euro Cylinder



For internal and external doors



A reliable solution when privacy is required: MTL400 Thumbturn Cylinders securely lock doors and can quickly unlock to provide a faster exit. Various optional features, such as clutch release and classroom function, make it ideal for a wide range of applications.



Certified security



Protection against cylinder attack

Technical data and features

Security	SKG*** certified (optional) EN 1303:2015 tested, 1 6 – B – C 6 0/D (D optional) Cam DIN 18252 compliant
Attack resistance	Anti-pick Anti-bump (for MKS consult your master key specialist) Anti-drill: 5 minutes' drilling resistance (optional) Anti-pull: 15 kN pulling resistance (optional) Anti-snap (optional)
Keying	Dimple key design Master key system (MKS); Keyed alike (KA); Keyed to differ (KD)
Number of keys	MKS and KA: according to order; KD: 3
Max. number of effective key differs	1,000,000
Key profiles	Multiple
Number of pins	5
Raw material	Brass
Finish	Nickel satin, brass, shiny brass
Optional functionality	Anti-snap design Construction keying Local cam designs (French, Adriatic Jus)

Knob Options



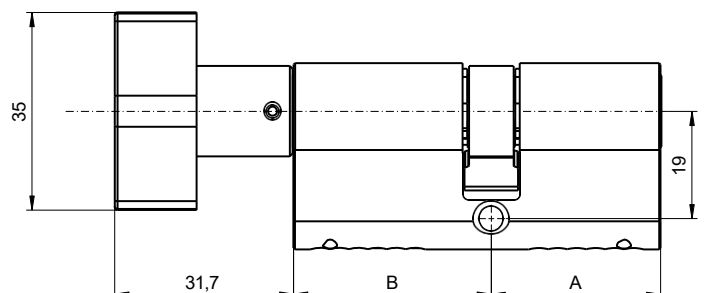
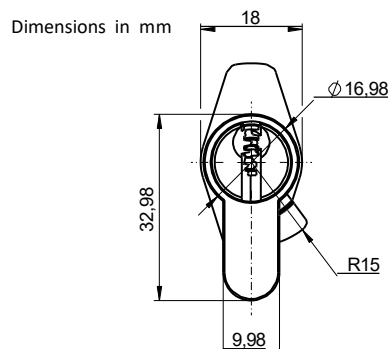
Ellipse Knob



Oval Knob



Round Knob



MTL400 Thumbturn Double Euro Cylinder



For internal and external doors

Thumb turn cylinder length

A	B	C
62	31	31
66	31	35
66	33	33
70	35	35
71	31	40
71	33	38
75	40	35
76	31	45
76	33	43
76	38	38
78	33	45
80	40	40
80	45	35
81	31	50
81	33	48
81	38	43
82	47.5	34.5
83	35	48
83	45	38
85	45	40
85	50	35
86	31	55
86	33	53
86	38	48
86	43	43
88	40	48
88	50	38
90	45	45
90	50	40
90	55	35
91	31	60
91	33	58

A	B	C
91	38	53
91	43	48
93	40	53
93	48	45
95	50	45
95	55	40
95	60	35
96	31	65
96	33	63
96	38	58
96	43	53
96	48	48
100	50	50
100	55	45
100	60	40
100	65	35
101	31	70
101	38	63
101	43	58
101	48	53
101	68	33
105	55	50
105	60	45
105	65	40
105	70	35
106	53	53
110	55	55
110	60	50
110	65	45
110	70	40
110	75	35
111	48	63

A	B	C
115	60	55
115	65	50
115	70	45
115	75	40
115	80	35
116	33	83
118	33	85
120	60	60
120	65	55
120	70	50
120	75	45
120	80	40
125	50	75
125	65	60
125	70	55
125	80	45
130	50	80
130	55	75
130	65	65
130	70	60
130	95	35
135	55	80
135	60	75
135	65	70
135	100	35
136	68	68
140	40	100
140	60	80
140	65	75
140	70	70

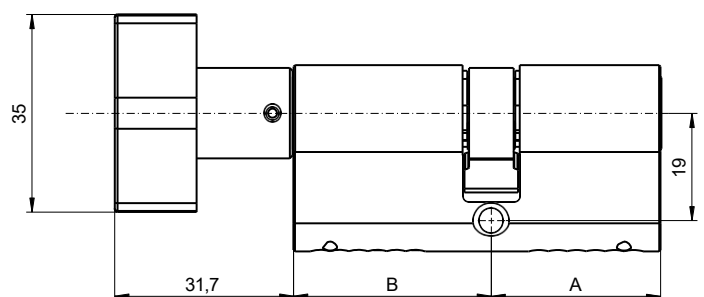
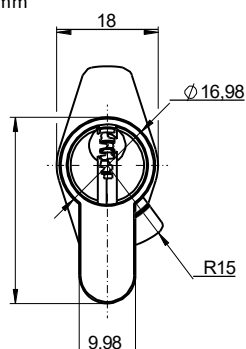


Certified security



Protection against cylinder attack

Dimensions in mm



MTL400 Single Euro Cylinder



For internal doors



Optional: Adjustable cam

Highly durable cylinder with the performance to secure your building. Keep interior spaces secure with the MTL400 Single Euro Cylinder. The optional multi-position cam allows the cam to turn into the application's required position.



Certified security



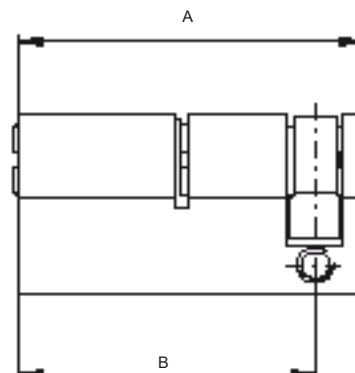
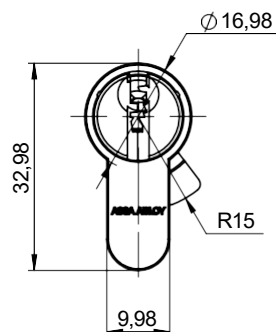
Protection against cylinder attack



Technical data and features

Security	SKG*** certified (optional) EN 1303:2015 tested, 1 6 – B – C 6 0/D (D optional) Cam DIN 18252 compliant
Attack resistance	Anti-pick Anti-bump (for MKS consult your master key specialist) Anti-drill: 5 minutes' drilling resistance (optional) Anti-pull: 15 kN pulling resistance (optional) Anti-snap (optional)
Keying	Dimple key design Master key system (MKS) Keyed alike (KA) Keyed to differ (KD)
Number of keys	MKS and KA: according to order; KD: 3
Max. number of effective key differs	1,000,000
Key profiles	Multiple
Number of pins	5
Raw material	Brass
Finish	Nickel satin, brass, shiny brass
Optional functionality	Adjustable cam Anti-snap design Construction keying

Dimensions in mm



MTL400 Single Euro Cylinder



For internal and external doors

Single cylinder length

A	B
40.5	31
42.5	33
44.5	35
47.5	38
49.5	40
52.5	43
54.5	45
57.5	48
59.5	50
64.5	55
69.5	60
74.5	65
79.5	70
84.5	75
89.5	80
99.5	90
134.5	125

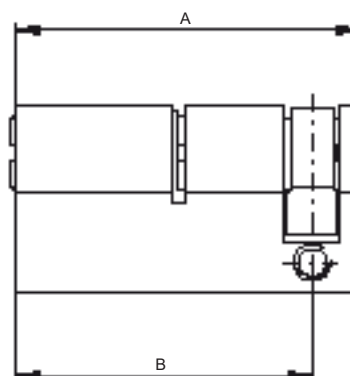
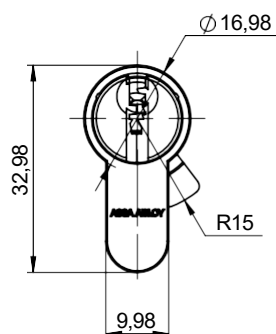


Certified security



Protection against cylinder attack

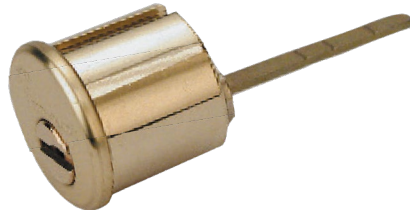
Dimensions in mm



MTL400 Rim Cylinder



Additional security
for external doors



Secure entrances while at the same time, enabling anyone inside to make an easy exit. The MTL400 Rim Cylinder can be used with night latches or other locking devices which are operated from a tailbar.



Certified security

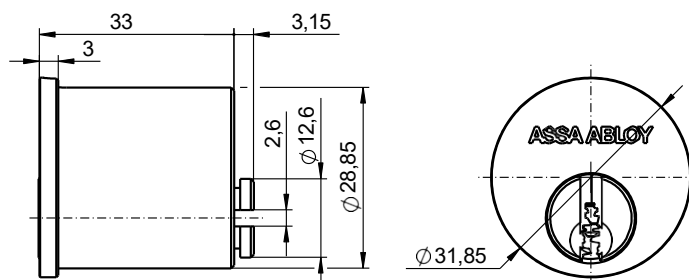


Protection against
cylinder attack

Technical data and features

Security	ISI950
Attack resistance	Anti-pick Anti-bump (for MKS consult your master key specialist) Anti-drill: 5 minutes' drilling resistance (optional) Anti-pull: 15 kN pulling resistance (optional)
Keying	Dimple key design Master key system (MKS) Keyed alike (KA) Keyed to differ (KD)
Number of keys	MKS and KA: according to order; KD: 3
Max. number of effective key differs	1,000,000
Key profiles	Multiple
Number of pins	5
Raw material	Brass
Finish	Nickel chrome matt, nickel chrome, shiny brass
Tail	steel
Dimensions	Face diameter: 32 mm Body diameter: 28.85mm Tail length: 54 mm

Dimensions in mm



MTL400 Mortise Cylinder



For metal doors



The MTL400 Screw-In Cylinder secures main entry aluminium or metal doors with narrow stile, commonly used in commercial applications such as shop or warehouse doors.



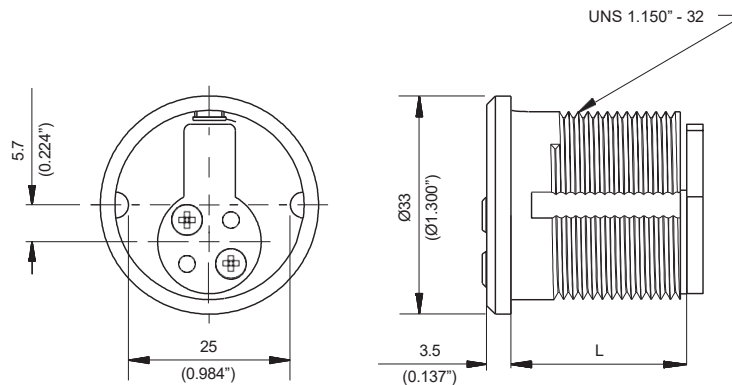
Certified security



Protection against cylinder attack

Technical data and features

Security	ISI950
Attack resistance	Anti-pick Anti-bump (for MKS consult your master key specialist) Anti-drill: 5 minutes' drilling resistance (optional)
Keying	Dimple key design Master key system (MKS) Keyed alike (KA) Keyed to differ (KD)
Number of keys	MKS and KA: according to order; KD: 2
Max. number of effective key differs	1,000,000
Key profiles	Multiple
Number of pins	5
Raw material	Brass
Finish	Nickel chrome matt, shiny brass
Dimensions	Face diameter: 33 mm Body diameter: 29.15 mm Length mentioned below table in inch

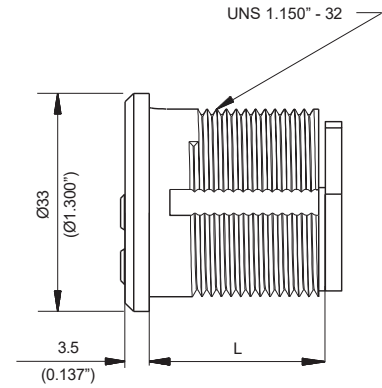
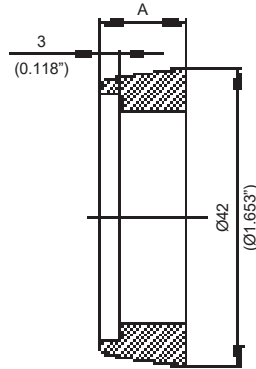


MTL400 Mortise Cylinder



For internal and external doors

Single cylinder length



Certified security

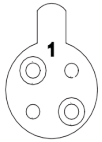
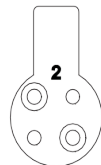
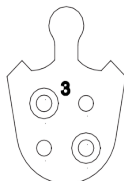
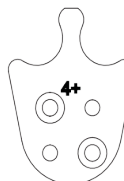

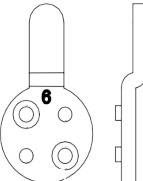

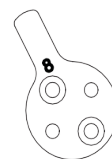
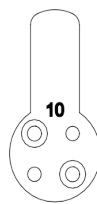

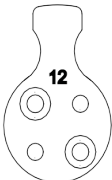





Protection against cylinder attack

A	
mm	Inch
5.7*	0.224*
8.9	0.350
12.2	0.480
15.5	0.610

*Supplied as standard

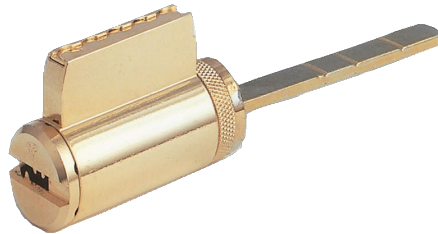
Cylinder	L	
	mm	Inch
1"(*)	23.1	0.909
1 1/8"	27.1	1.067
1 1/4"	30.3	1.193
1 3/8"	33.5	1.318
1 1/2"	36.7	1.445
1 3/4"	43.1	1.697
2"	49.5	1.949

P/N 85000020 Cam 1 	P/N 85000014 Cam 2 	P/N 85000019 Cam 3 	P/N 85000041 Cam 4 	P/N 85000054 Cam 5 
P/N 86001008 Cam 6 	P/N 85000057 Cam 7 	P/N 85000082 Cam 8 	P/N 85000112 Cam 10 	P/N 85000117 Cam 11 
P/N 85000165 Cam 12 	P/N 51075696 Cam 15 	P/N 85000185 Cam 16 	P/N 85000186 Cam 17 	

MTL400 Key In Knob Cylinder



For switch boxes and control panels



The MTL400 key in knob are used in cylindrical locksets, deadbolts and padlocks. Provides an extensive range to fit a wide variety of popular brands.



Certified security



Protection against cylinder attack

Technical data and features

Security

Attack resistance	Anti-pick Anti-bump (for MKS consult your master key specialist)
--------------------------	---

Keying	Dimple key design Master key system (MKS) Keyed alike (KA) Keyed to differ (KD)
---------------	--

Number of keys	MKS and KA: according to order; KD: 2
-----------------------	---------------------------------------

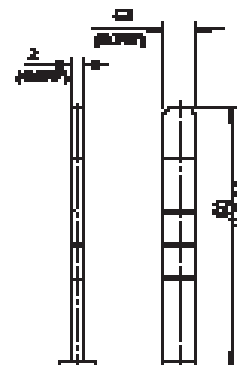
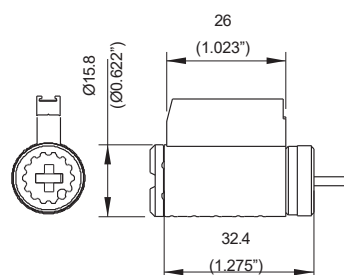
Max. number of effective key differs	1,000,000
---	-----------

Key profiles	Multiple
---------------------	----------

Number of pins	5
-----------------------	---

Raw material	Brass,
---------------------	--------

Finish	Nickel chrome matt, shiny brass
---------------	---------------------------------



MTL400 LFIC



For indoor and outdoor locking points



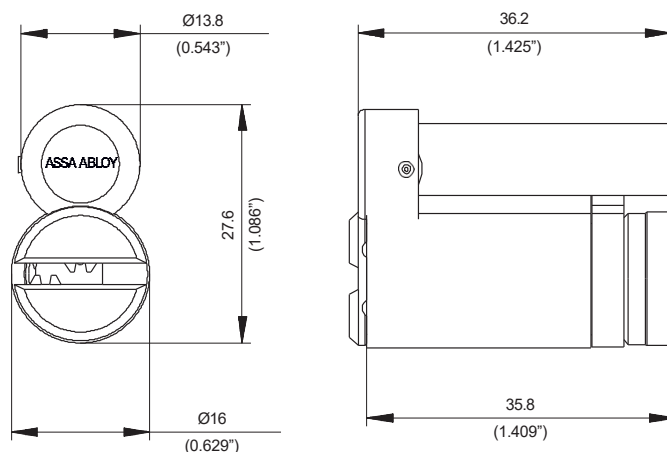
Retrofitting large format interchangeable core for Large format housing for various applications. MTL400 key: 360° rotation. Control key: 90° rotation enables core extraction



Certified security

Technical data and features

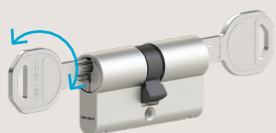
Security	
Attack resistance	Anti-pick Anti-bump (for MKS consult our master key specialist)
Keying	Dimple key design Master key system (MKS) Keyed alike (KA) Keyed to differ (KD)
Number of keys	MKS and KA: according to order; KD: 3
Max. number of effective key differs	1,000,000
Key profiles	Multiple
Number of pins	5
Raw material	Brass
Finish	Nickel chrome matt, shiny brass



Glossary of optional MTL400 functionality

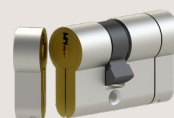


An aid to better
understanding



Emergency clutch

When a key is accidentally left in the keyway on one side, you can still operate the cylinder from the other.



Anti-snap protection

The cylinder is designed to break under attack, while leaving the inner plug intact. If the lock is attacked, the cylinder breaks in a secure, pre-defined place. With the main mechanism intact, the keyholder can still use their key to unlock the door, so the cylinder doesn't need immediate replacement.



Construction keying

One temporary key gives contractors access to several homes during building phase. Homeowner keys are protected from duplication when they move in. When inserted and turned, their key changes the cylinder's internal mechanism, permanently invalidating the construction key.



Gear wheel

Cylinders with a gear wheel instead of a cam are used in doors with horizontal lock bar, for example. These locks are designed to work with gear wheels, not a cam.



Multi-position cam

The cam can be adjusted to eight different positions within a 45-degree angle by pressing the cam's locking pin and turning the cam into the application's required position. For use with key switches.

The ASSA ABLOY Group is the global leader in access solutions. Every day, we help billions of people experience a more open world.

ASSA ABLOY Opening Solutions leads the development within door openings and products for access solutions in homes, businesses and institutions. Our offering includes doors, door and window hardware, locks, access control and service.

ASSA ABLOY
Opening Solutions

ASSA ABLOY Opening Solutions Middle East

UAE Office

P.O. Box 37765
Jabel Ali, Industrial Area 1
Dubai, United Arab Emirates
Tel: +971 4 880 4888
Fax: +971 4 880 4888

Qatar Office

P.O. Box 32522
D-Ring Road, Al Mataar
Al Qadeem District, Regus Business Centre
1st Floor, Office 109

Saudi Arabia Office

P.O. Box 25960
Abdulaziz Main Road,
2nd Floor, Riyadh, Kingdom of
Saudi Arabia
Tel: +966 1141 62075

Egypt Office

P.O. Box 11341
St. Roxy Cairo, Egypt
Tel: +20 12234 75737
Fax: +20 2225 78481

info.me.open@assaabloy.com
www.assaabloy.com

