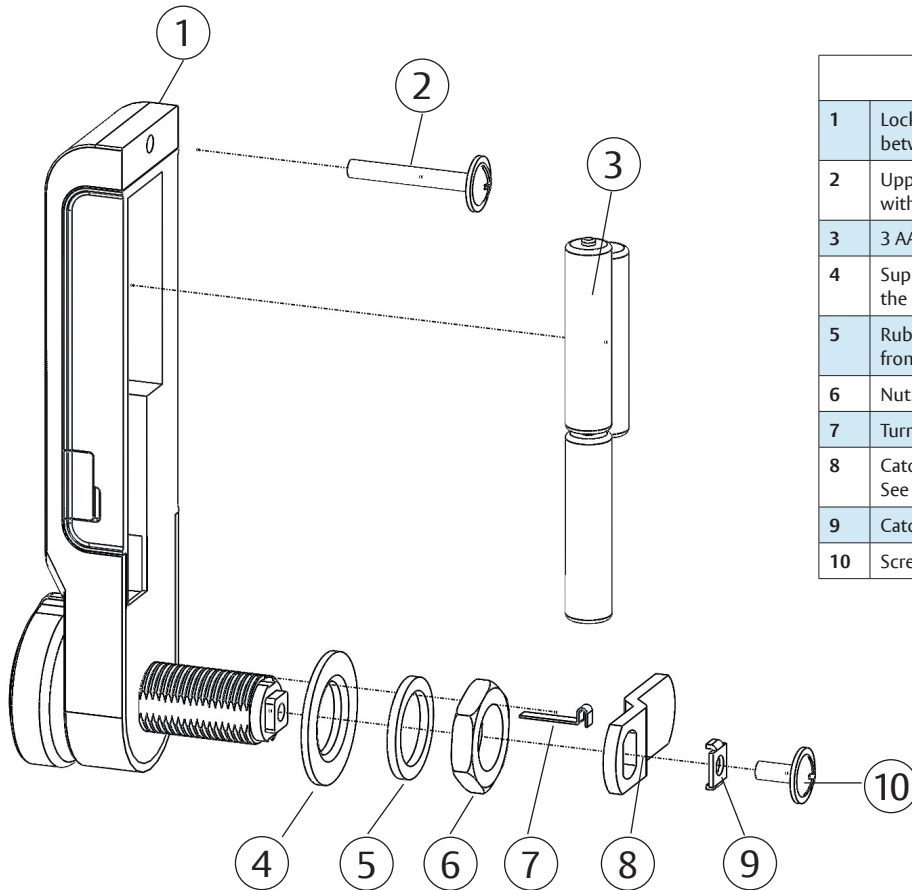


## ASSA ABLOY PIN/SENSE

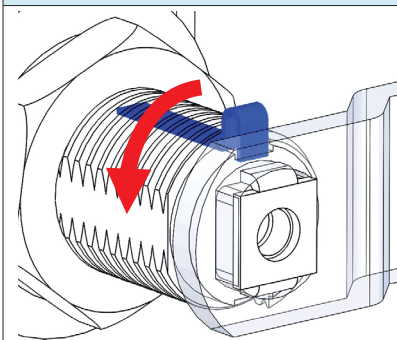


### Included parts for assembly of lock

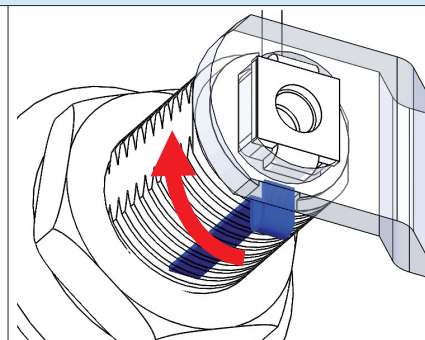
1	Lock. Available for assembly on doors with thickness between 1-15 mm and 15-23 mm.
2	Upper screw. Depending on the door thickness, use screw with proper length.
3	3 AAA batteries.
4	Support Ring. Used to center the lock and give support when the lock is assembled in a bigger hole.
5	Rubber Ring. Used to protect the door against scratches from the nut.
6	Nut.
7	Turn Limiter (see below).
8	Catch. Ordered separately to fit a specific locker. See catch data sheets.
9	Catch positioner.
10	Screw for assembly of catch.

### Function of Turn Limiter

Without the turn limiter assembled, the catch can be turned both 90 degrees clockwise and counter clockwise



With the turn limiter assembled in upper position the catch can only be turned 90 degrees counter clockwise.



With the turn limiter assembled in lower position the catch can only be turned 90 degrees clockwise.

ASSA ABLOY Opening Solutions Middle East

#### UAE Office

P.O. Box 37765  
Jabel Ali, Industrial Area 1  
Dubai, United Arab Emirates  
Tel: +971 4 880 4888  
Fax: +971 4 880 4888

#### Egypt Office

P.O. Box 11341  
4A, Shafik Ghorbal  
St. Roxy Cairo, Egypt  
Tel: +20 12234 75737  
Fax: +20 2225 78481

✉ info.me.open@assaabloy.com  
🌐 www.assaabloy.com